

JRG WEST AURORA, LLC
11900 FREEMAN ROAD
HUNTLEY, IL. 60142

Petitioner
THESE DRAWINGS AND SPECIFICATIONS ARE THE CONFIDENTIAL AND PROPRIETARY PROPERTY OF DXU LLC AND SHALL NOT BE COPIED OR REPRODUCED WITHOUT WRITTEN AUTHORIZATION.

**Multi-Tenant Bldg
2340W. INDIAN TRAIL RD
Aurora, IL**

Project

DXU
ARCHITECTS
404 S. Wells Street • 3rd Floor • Chicago • IL • 60607
P: 312 955 0334 • dxuarch.com
Architect of Record

Consultant

No.	Issue	Date
	FINAL PLAN	08-29-2018

Seal

FINAL PLAN
Store Number 15-165
Approved ES
Title

ELEVATIONS INFO

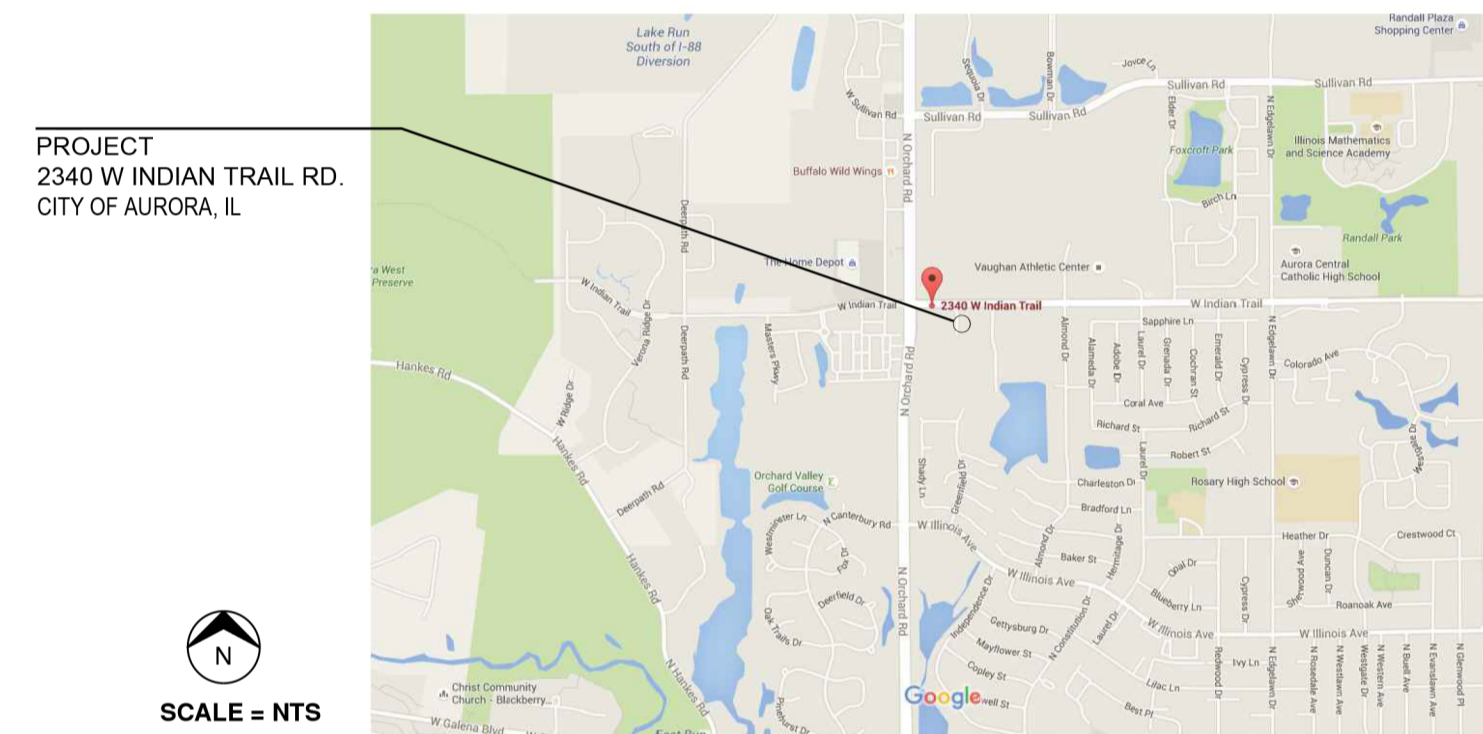
Sheet

A1-20

ELEVATIONS

MULTI-TENANT BLDG 2340 W. INDIAN TRAIL ROAD CITY OF AURORA, IL

VICINITY MAP



ELEVATION DATA TABLE

Elevation Data Table: Elevations		
Description	Value	Unit
a) Building Height in feet (typical)	25'-0"	feet
b) Total Building Square Footage (typical)	5,386	Square Feet
c) First Floor Building Square Footage (typical)	5,386	Square Feet
d) Number of building stories (typical)	1	Square Feet
e) Exterior Material List (including colors) for all buildings and accessory structures:		
Cast Stone Veneer Smooth / Buff		
Cast Stone Sill Rockface / Buff		
Brick Veneer Modular Running Bond / Red		
Groundface CMU / Buff		
Splitface CMU Running / Buff , Walnut		
Fabric Awnings / Black		
Storefront System: Kawneer Trifab vg 451t - 4.5x2/ Center Glazed/ Dark Bronze		
EIFS - Dryvit W/ Drainage Plane / Buff		
Scupper & Downspout - Painted to Match bldg		
Rear Service Doors per Tenant Spec where applicable - Painted to Match bldg		

Elevation Data Table: Ground Signage		
Ground Sign #	Description	Value Unit
1	i) Length of street frontage - on which Sign is Located	143.37 Feet
	ii) Width of Sign Face	10.0 Feet
	iii) Height of Sign Face	5.0 Feet
	iv) Square Footage of Sign Face	50.00 Square Feet
	v) Height of Sign (overall)	6.5 Feet
	vi) Width of Sign (overall)	10.33 Feet
	vii) Type of Sign	Ground Sign
	viii) Type of Sign Base	Masonry
	ix) Is there a Digital Display	
	If Yes then, Location of Digital Display on the sign	
Height of Digital Display	Feet	
Width of Digital Display	Feet	
Square Footage of Digital Display	Square Feet	
Percent of Digital Display Sign Coverage	Percent	

Elevation Data Table: Wall Signage		
Wall Sign #	Description	Value Unit
1	i) Width of Façade - on which Sign is Located	23.75 Feet
	ii) Height of Façade - on which Sign is Located	25.0 Feet
	iii) Square Footage of Façade - on which Sign is Located	593.62 Square Feet
	iv) Width of Sign Face	18'-0" Feet
	v) Height of Sign Face	3'-0" Feet
	vi) Square Footage of Sign Face	54.0 Square Feet
	vii) Percent of Sign Coverage - Façade on which Sign is Located	9.09% Percent
	viii) Percent of Sign Coverage - Façade on which Sign is Located	9.09% Percent
2	i) Width of Façade - on which Sign is Located	44 Feet
	ii) Height of Façade - on which Sign is Located	22 Feet
	iii) Square Footage of Façade - on which Sign is Located	968 Square Feet
	iv) Width of Sign Face	26.53 Feet
	v) Height of Sign Face	3.0 Feet
	vi) Square Footage of Sign Face	79.75 Square Feet
	vii) Percent of Sign Coverage - Façade on which Sign is Located	8.23% Percent
	viii) Percent of Sign Coverage - Façade on which Sign is Located	8.23% Percent
3	i) Width of Façade - on which Sign is Located	79.33 Feet
	ii) Height of Façade - on which Sign is Located	29.0 Feet
	iii) Square Footage of Façade - on which Sign is Located	1588.66 Square Feet
	iv) Width of Sign Face	18.0 Feet
	v) Height of Sign Face	3.0 Feet
	vi) Square Footage of Sign Face	54.0 Square Feet
	vii) Percent of Sign Coverage - Façade on which Sign is Located	3.40% Percent
	viii) Percent of Sign Coverage - Façade on which Sign is Located	3.40% Percent
4	i) Width of Façade - on which Sign is Located	78.00 Feet
	ii) Height of Façade - on which Sign is Located	22.0 Feet
	iii) Square Footage of Façade - on which Sign is Located	1716.00 Square Feet
	iv) Width of Sign Face	26.883 Feet
	v) Height of Sign Face	3.0 Feet
	vi) Square Footage of Sign Face	79.75 Square Feet
	vii) Percent of Sign Coverage - Façade on which Sign is Located	4.65% Percent
	viii) Percent of Sign Coverage - Façade on which Sign is Located	4.65% Percent
5	i) Width of Façade - on which Sign is Located	70.00 Feet
	ii) Height of Façade - on which Sign is Located	20.0 Feet
	iii) Square Footage of Façade - on which Sign is Located	1400.00 Square Feet
	iv) Width of Sign Face	14'-0" Feet
	v) Height of Sign Face	4.25 Feet
	vi) Square Footage of Sign Face	59.5 Square Feet
	vii) Percent of Sign Coverage - Façade on which Sign is Located	4.25% Percent
	viii) Percent of Sign Coverage - Façade on which Sign is Located	4.25% Percent
6	i) Width of Façade - on which Sign is Located	70.00 Feet
	ii) Height of Façade - on which Sign is Located	20.00 Feet
	iii) Square Footage of Façade - on which Sign is Located	1400.00 Square Feet
	iv) Width of Sign Face	12.5 Feet
	v) Height of Sign Face	4.0 Feet
	vi) Square Footage of Sign Face	50.0 Square Feet
	vii) Percent of Sign Coverage - Façade on which Sign is Located	3.57% Percent
	viii) Percent of Sign Coverage - Façade on which Sign is Located	3.57% Percent

Municipal Approval
Stamps

ARROWHEAD DEVELOPMENT, LLC
P.O. BOX 1517
BOLINGBROOK, IL 60440

Petitioner
THESE DRAWINGS AND SPECIFICATIONS ARE THE CONFIDENTIAL AND PROPRIETARY PROPERTY OF DXU, LLC AND SHALL NOT BE COPIED OR REPRODUCED WITHOUT WRITTEN AUTHORIZATION.

Multi-Tenant Bldg
2340W. INDIAN TRAIL RD
Aurora, IL

Project
DXU
ARCHITECTS
404 S. Wells Street • 3rd Floor • Chicago • IL • 60607
P: 312 955 0334 • dxuarch.com
Architect of Record

Consultant

NO	DATE	REVISIONS/ISSUANCES
1	09/19/2018	CITY COMMENTS

SEAL

INITIAL STUDIES

DATE:	05/23/2018
PROJECT NUMBER:	DXU#15-165
SCALE:	1/4" = 1'-0"
DRAWN BY:	PK
CHECKED BY:	PK
APPROVED BY:	ES

EXTERIOR ELEVATIONS

A3-01



1 WEST ELEVATION
1/4" = 1'-0"



2 NORTH ELEVATION
1/4" = 1'-0"

MATERIAL KEYNOTES

- 1 EIFS W/ DRAINAGE PLANE
- 2 EIFS ACCENT BAND
- 3 EIFS REVEAL
- 4 METAL COPING
- 5 STAINED SPLIT FACE CMU
- 6 FABRIC AWNING - BLACK
- 7 CAST STONE SILL ROCKFACE 4" HIGH
- 8 UP/ DOWN SCENCE LIGHTS
- 9 STOREFRONT SYSTEM: KAWNEER TRIFAB VG 451T - 4.5x2/ CENTER GLAZED
- 10 ILLUMINATED SIGNAGE - BY TENANT. REFER TO "ELEVATION DATA TABLE: WALL SIGNAGE ON SHEET A1-20 FOR DETAILED INFORMATION
- 11 BRICK VENEER - COLOR MOUNTAIN RED
- 12 CORDOVA STONE BUFF
- 13 SCUPPER & DOWNSPOUT - PAINT
- 13 DRIVE THRU WINDOW PER TENANT STANDARDS
- 14 REAR SERVICE DOOR - COLOR TO MATCH MASONRY WALL
- 15 EIFS CORNICE
- 16 ROOF ACCESS 1 ADDFR

1
 4
 T/O PARAPET
25'-0"
 15
 T/O PARAPET
20'-0"
 3
 2
 11
 6
 T/O STOREFRONT
10'-0"
 8
 11
 9
 7
 12
 T/O FIN. FLOOR
0"



MATERIAL KEYNOTES

- 1 EIFS W/ DRAINAGE PLANE
- 2 EIFS ACCENT BAND
- 3 EIFS REVEAL
- 4 METAL COPING
- 5 STAINED SPLIT FACE CMU
- 6 FABRIC AWNING - BLACK
- 7 CAST STONE SILL ROCKFACE 4" HIGH
- 8 UP/ DOWN SCONCE LIGHTS
- 9 STOREFRONT SYSTEM: KAWNEER TRIFAB VG 451T - 4.5x2/ CENTER GLAZED
- 10 ILLUMINATED SIGNAGE - BY TENANT. REFER TO 'ELEVATION DATA TABLE: WALL SIGNAGE ON SHEET A1-20 FOR DETAILED INFORMATION
- 11 BRICK VENEER - COLOR MOUNTAIN RED
- 12 CORDOVA STONE BUFF
- 13 SCUPPER & DOWNSPOUT - PAINT
- 13 DRIVE THRU WINDOW PER TENANT STANDARDS
- 14 REAR SERVICE DOOR - COLOR TO MATCH MASONRY WALL
- 15 EIFS CORNICE
- 16 ROOF ACCESS LADDER

1 WEST ELEVATION-FUTURE EXPANSION
1/4" = 1'-0"

1
 4
 T/O PARAPET
25'-0"
 15
 T/O PARAPET
22'-0"
 3
 10
 2
 6
 T/O STOREFRONT
10'-0"
 8
 11
 9
 7
 12
 T/O FIN. FLOOR
0"



2 NORTH ELEVATION-FUTURE EXPANSION
1/4" = 1'-0"

Municipal Approval Stamps

ARROWHEAD DEVELOPMENT, LLC
P.O. BOX 1517
BOLINGBROOK, IL 60440

Petitioner
THESE DRAWINGS AND SPECIFICATIONS ARE THE CONFIDENTIAL AND PROPRIETARY PROPERTY OF DXU, LLC, AND SHALL NOT BE COPIED OR REPRODUCED WITHOUT WRITTEN AUTHORIZATION.

Project
Multi-Tenant Bldg
2340W. INDIAN TRAIL RD
Aurora, IL

Consultant

404 S. Wells Street • 3rd Floor • Chicago • IL • 60607
P: 312 955 0334 • dxuarch.com
Architect of Record

Consultant

NO DAT REVISIONS/ISSUANCES

SEAL
INITIAL STUDIES

DATE: 05/23/2018
PROJECT NUMBER: DXU#15-165
SCALE: 1/4" = 1'-0"
DRAWN BY: PK
CHECKED BY: PK
APPROVED BY: ES

EXTERIOR ELEVATIONS - FUTURE EXPANSION

A3-01E



1 EAST ELEVATION
1/4" = 1'-0"



2 SOUTH ELEVATION
1/4" = 1'-0"

MATERIAL KEYNOTES

- 1 EIFS W/ DRAINAGE PLANE
- 2 EIFS ACCENT BAND
- 3 EIFS REVEAL
- 4 METAL COPING
- 5 STAINED SPLIT FACE CMU
- 6 FABRIC AWNING - BLACK
- 7 CAST STONE SILL ROCKFACE 4" HIGH
- 8 UP/ DOWN SCIENCE LIGHTS
- 9 STOREFRONT SYSTEM: KAWNEER TRIFAB VG 451T - 4.5x2' CENTER GLAZED
- 10 ILLUMINATED SIGNAGE - BY TENANT. REFER TO 'ELEVATION DATA TABLE: WALL SIGNAGE' ON SHEET A1-20 FOR DETAILED INFORMATION
- 11 BRICK VENEER - COLOR MOUNTAIN RED
- 12 CORDOVA STONE BUFF
- 13 SCUPPER & DOWNSPOUT - PAINT
- 14 DRIVE THRU WINDOW PER TENANT STANDARDS
- 15 REAR SERVICE DOOR - COLOR TO MATCH MASONRY WALL
- 16 EIFS CORNICE
- 17 ROOF ACCESS LADDER

Municipal Approval
Stamps

ARROWHEAD DEVELOPMENT, LLC
P.O.BOX 1517
BOLINGBROOK, IL 60440

Petitioner
THESE DRAWINGS AND SPECIFICATIONS ARE THE CONFIDENTIAL AND PROPRIETARY PROPERTY OF DXU LLC AND SHALL NOT BE COPIED OR REPRODUCED WITHOUT WRITTEN AUTHORIZATION.

Multi-Tenant Bldg
2340W. INDIAN TRAIL RD
Aurora, IL

Project
DXU
ARCHITECTS
404 S. Wells Street • 3rd Floor • Chicago • IL • 60607
P: 312 955 0334 • dxuarch.com
Architect of Record

Consultant

NO.	DATE	REVISIONS/ISSUANCES

SEAL

DATE	05/23/2018
PROJECT NUMBER	15-165
SCALE:	AS NOTED
DRAWN BY:	PK
CHECKED BY:	PK
APPROVED BY:	ES

EXTERIOR ELEVATIONS

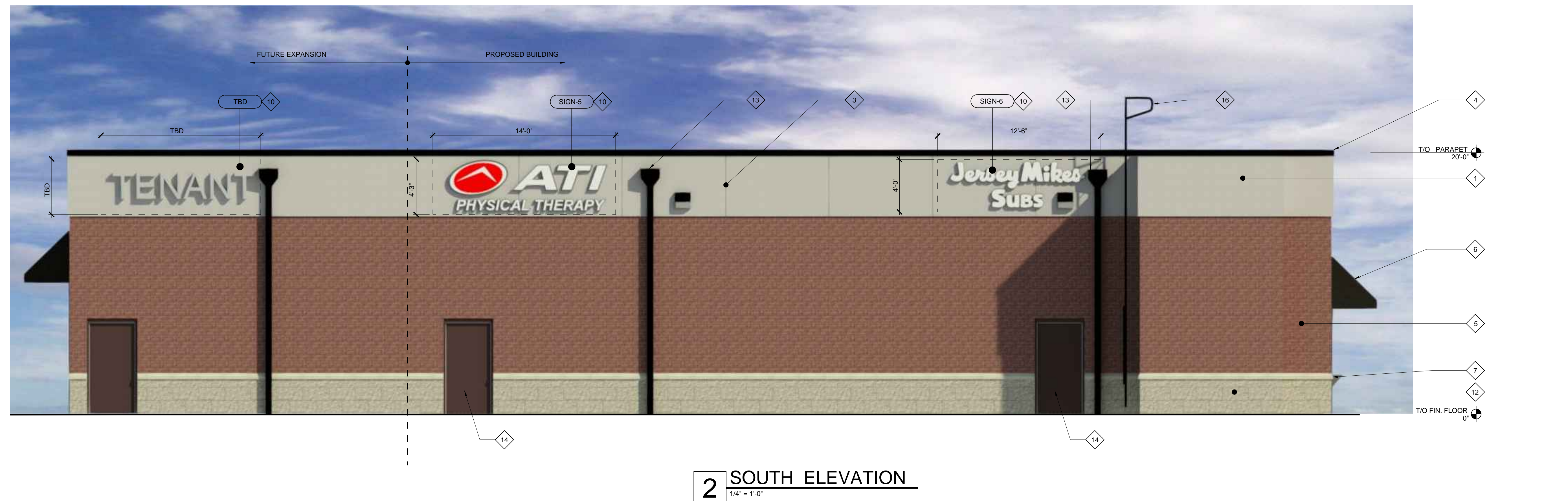
A3-02



MATERIAL KEYNOTES

- 1 EIFS W/ DRAINAGE PLANE
- 2 EIFS ACCENT BAND
- 3 EIFS REVEAL
- 4 METAL COPING
- 5 STAINED SPLIT FACE CMU
- 6 FABRIC AWNING - BLACK
- 7 CAST STONE SILL ROCKFACE 4" HIGH
- 8 UP/ DOWN SCOFF LIGHTS
- 9 STOREFRONT SYSTEM - KAWNEER TRIFAB VG 451T - 4.5XZ/ CENTER GLAZED
- 10 ILLUMINATED SIGNAGE - BY TENANT
- 11 BRICK VENEER - COLOR MOUNTAIN RED
- 12 CORDOVA STONE BUFF
- 13 SCUPPER & DOWNSPOUT - PAINT
- 14 DRIVE THRU WINDOW PER TENANT STANDARDS
- 15 REAR SERVICE DOOR - COLOR TO MATCH MASONRY WALL
- 16 EIFS CORNICE

1 EAST ELEVATION
1/4" = 1'-0"



2 SOUTH ELEVATION
1/4" = 1'-0"

Municipal Approval Stamps

ARROWHEAD DEVELOPMENT, LLC
P.O. BOX 1517
BOLINGBROOK, IL 60440

Petitioner THESE DRAWINGS AND SPECIFICATIONS ARE THE CONFIDENTIAL AND PROPRIETARY PROPERTY OF DXU LLC AND SHALL NOT BE COPIED OR REPRODUCED WITHOUT WRITTEN AUTHORIZATION

Multi-Tenant Bldg
2340W. INDIAN TRAIL RD
Aurora, IL

Project

DXU

ARCHITECTS

404 S. Wells Street • 3rd Floor • Chicago • IL • 60607
P: 312 955 0334 • dxuarch.com

Architect of Record

Consultant

NO.	DATE	REVISIONS/ISSUANCES

SEAL

DATE 05/23/2018
PROJECT NUMBER 15-165
SCALE: AS NOTED
DRAWN BY: PK
CHECKED BY: PK
APPROVED BY: ES

EXTERIOR ELEVATIONS -
FUTURE EXPANSION

A3-02E

ARROWHEAD DEVELOPMENT, LLC
P.O.BOX 1517
BOLINGBROOK, IL 60440

Petitioner
THESE DRAWINGS AND SPECIFICATIONS ARE THE CONFIDENTIAL AND PROPRIETARY PROPERTY OF DXU LLC AND SHALL NOT BE COPIED OR REPRODUCED WITHOUT WRITTEN AUTHORIZATION.

Multi-Tenant Bldg
2340W. INDIAN TRAIL RD
Aurora, IL

Project

DXU
ARCHITECTS
404 S. Wells Street • 3rd Floor • Chicago • IL • 60607
P: 312 955 0334 • dxuarch.com
Architect of Record

Consultant

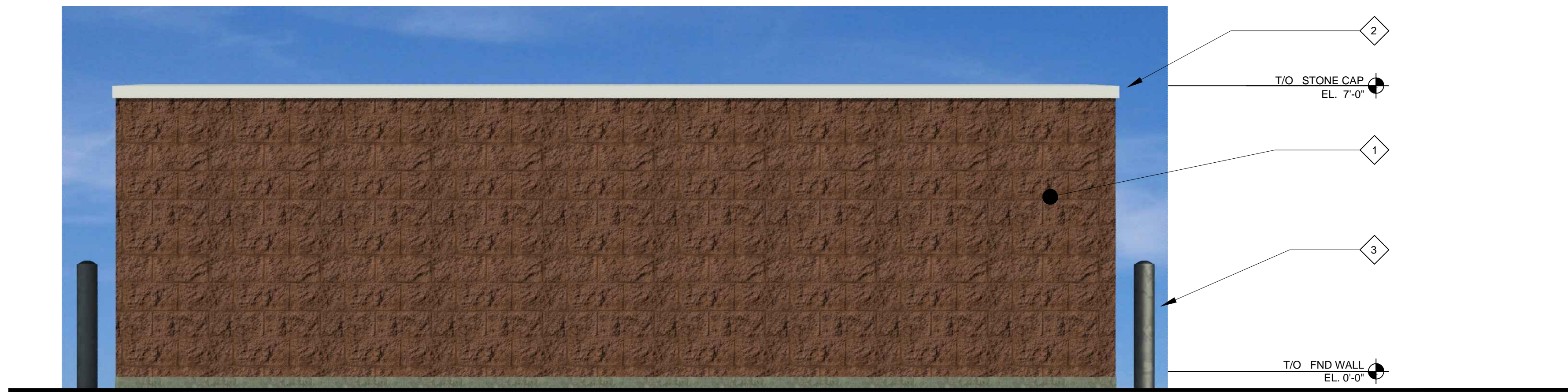
NO.	DATE	REVISIONS/ISSUANCES
1	09/19/2018	CITY COMMENTS

SEAL

DATE	05/23/2018
PROJECT NUMBER	15-165
SCALE:	AS NOTED
DRAWN BY:	PK
CHECKED BY:	PK
APPROVED BY:	ES

TRASH ENCLOSURE &
MONUMENT SIGN ELEVATIONS

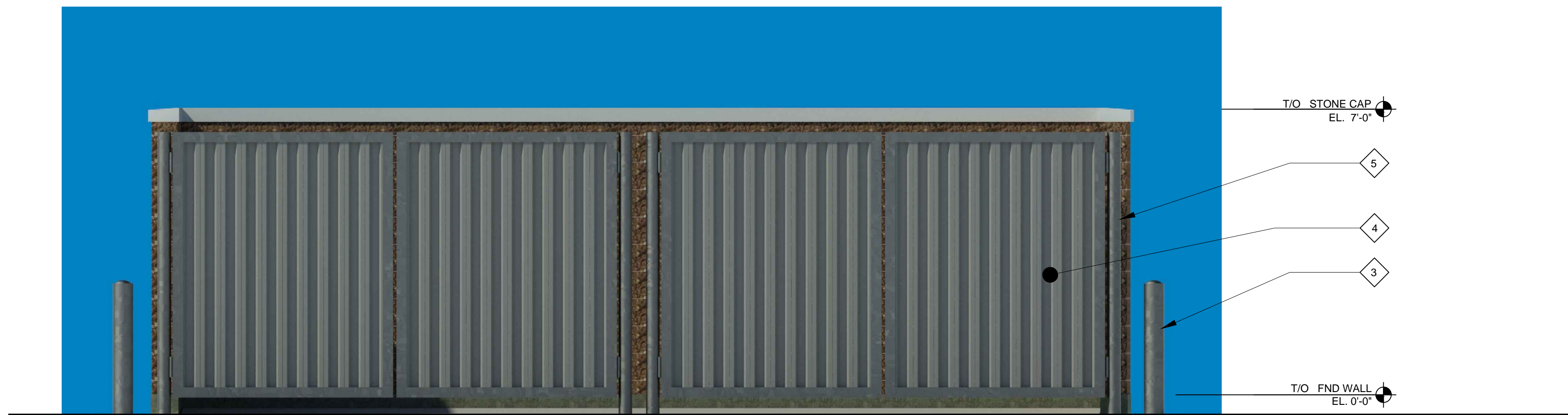
A3-03



1 TRASH ENCLOSURE - BACK ELEVATION
1/2" = 1'-0"

MATERIAL KEYNOTES

- 1 STAINED SPLIT FACE CMU - COLOR TO MATCH THE BUILDING
- 2 PRECAST CONC. CAP 4" HIGH
- 3 STEEL BOLLARD - PAINT BLACK
- 4 PAINTED STEEL GATES W/ CORRUGATED STEEL INFILL PANELS - COLOR BLACK
- 5 4" STEEL PIPE - PAINT BLACK
- 6 BRICK VENEER - COLOR MOUNTAIN RED(MATCH THE BUILDING)
- 7 DOUBLE FACED ILLUMINATED SIGN - BY SIGN VENDOR REFER TO "ELEVATION DATA TABLE: WALL SIGNAGE ON SHEET A1-20 FOR DETAILED INFORMATION



2 TRASH ENCLOSURE - FRONT ELEVATION
1/2" = 1'-0"



3 TRASH ENCLOSURE - SIDE ELEVATION
1/2" = 1'-0"



4 MONUMENT SIGN - FRONT/BACK ELEVATION
1/2" = 1'-0"