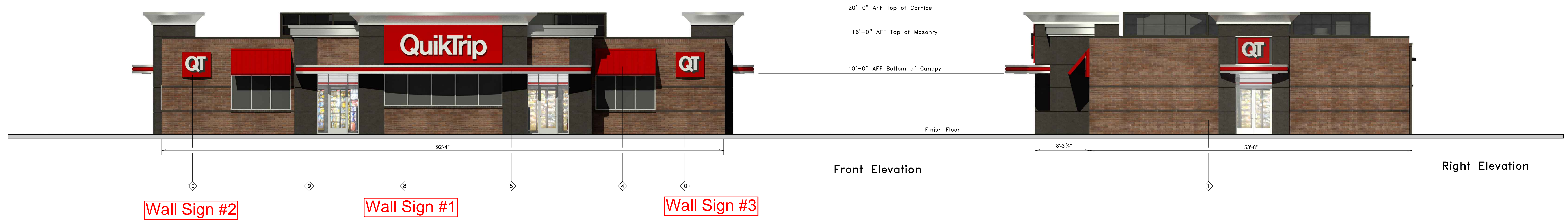


ELEVATIONS

QT 4448 ADDITION SUBDIVISION
LOT 1

Elevation Data Table: Elevations		
Description	Value	Unit
a) Building Height in feet (typical)	20.00	feet
b) Total Building Square Footage (typical)	5,023.00	Square Feet
c) First Floor Building Square Footage (typical)	5,023.00	Square Feet
d) Number of building stories (typical)	1.00	Square Feet
e) Exterior Material List (including colors) for all buildings and accessory structures: Brick - Bronzestone and Midnight colors Paint - QT Brown and Black colors EIFS - Granite PolyPro Mesh		

See next page for Elevation Data Table: Wall Signage for Wall Signs #1, 2, & 3

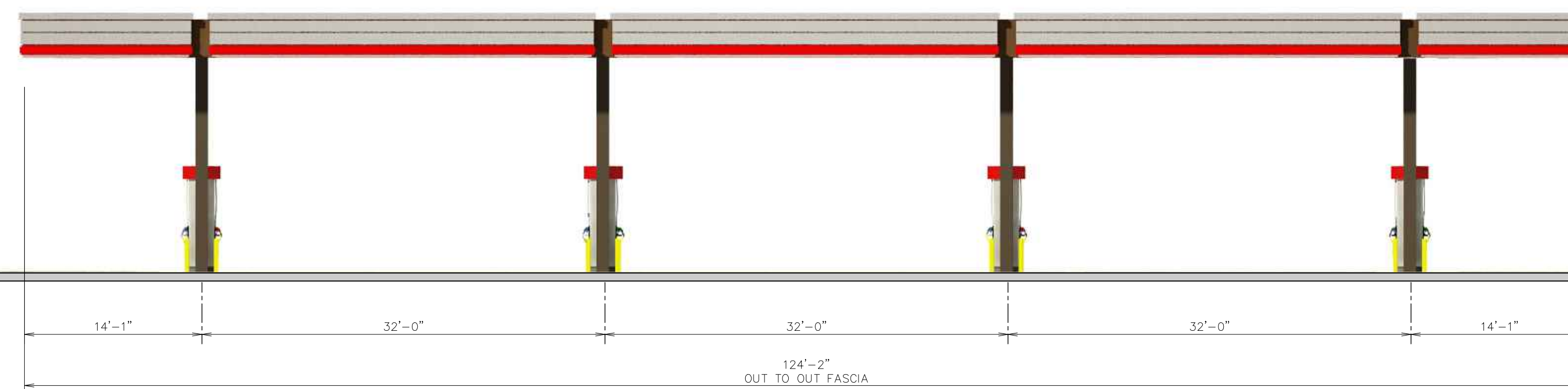
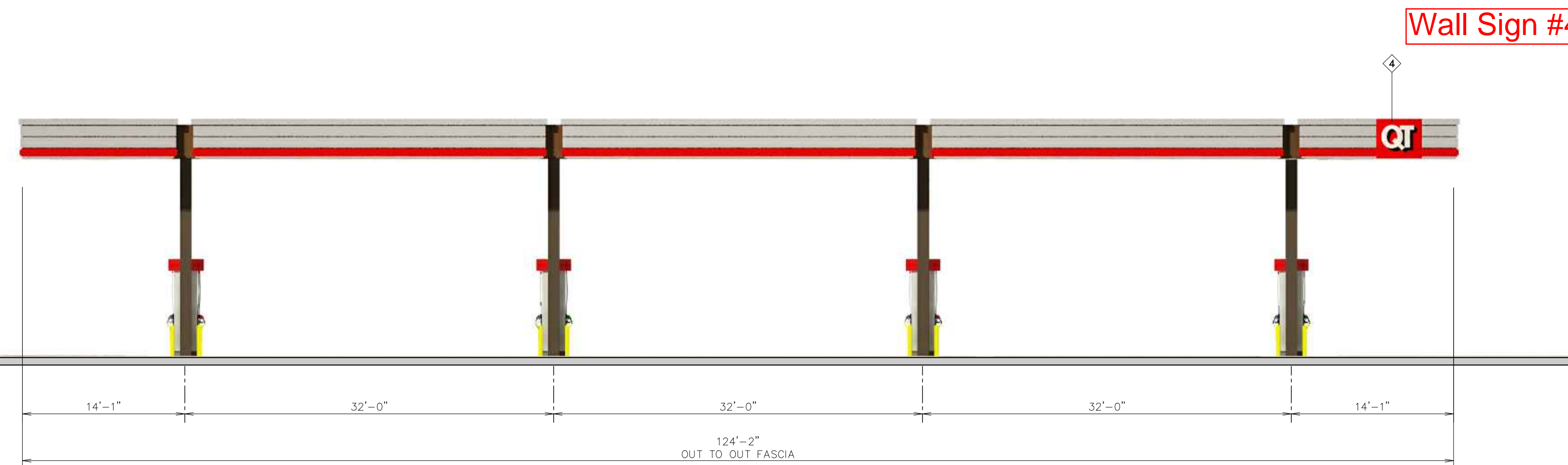
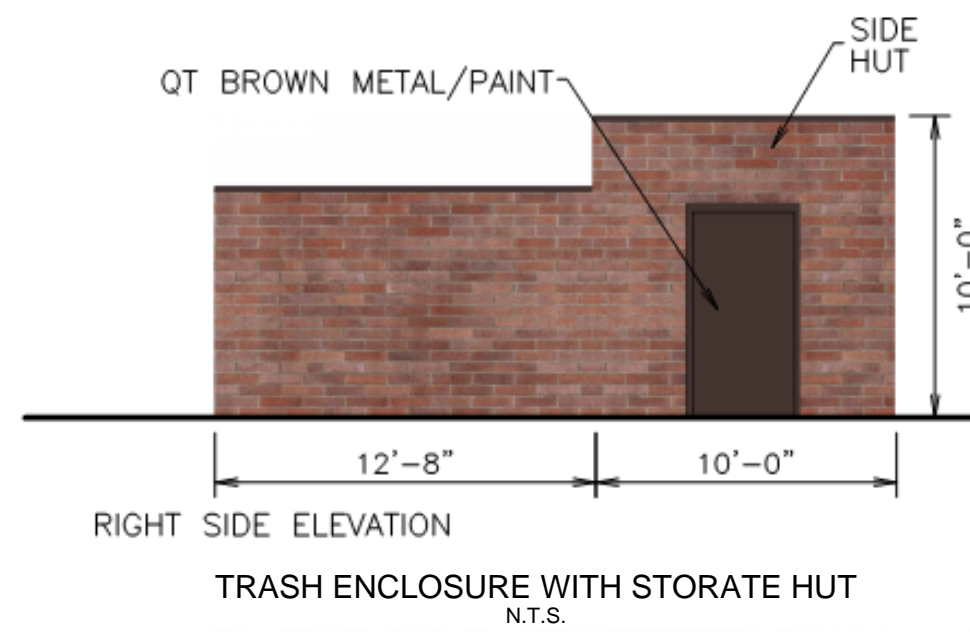
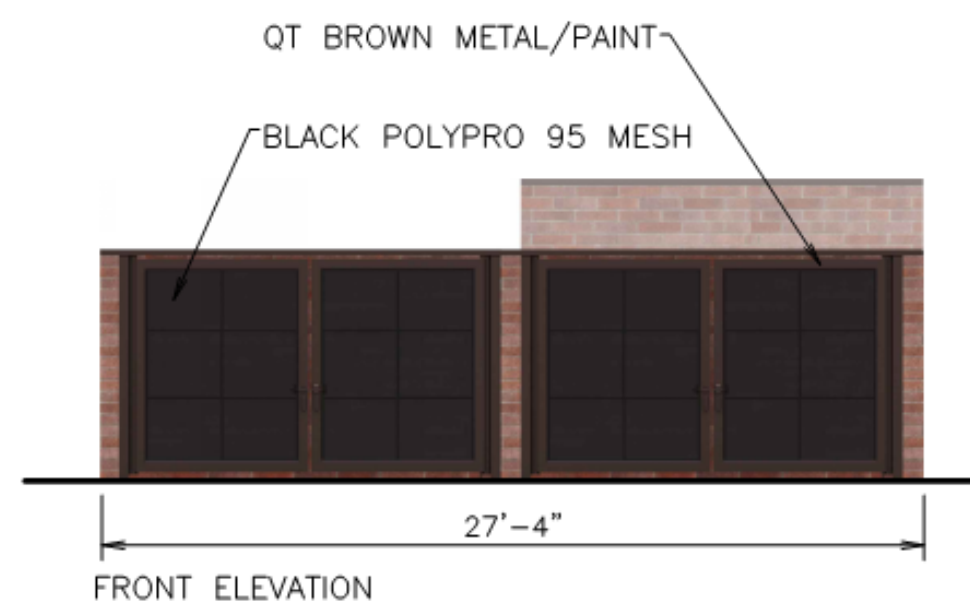


	ELEVATIONS - QT 4448 ADDITION SUBDIVISION LOT 1																																																		
	Store #	4448	G3SE Fuel Stop Elevations	Address:	Eola and Diehl	City, State:	Aurora, IL																																												
Serial #	84-4448-G3SE	Scale:	1/8"=1'-0"	Issue Date:	02.25.25	Drawn By:	BP																																												
				Rev/Notes:	<small>COPYRIGHT © 2011 QUIKTRIP CORPORATION DESIGN PATENTS QUIKTRIP PLANS ARE THE EXCLUSIVE PROPERTY OF QUIKTRIP CORPORATION, TULSA, OKLAHOMA. THESE PLANS ARE PROTECTED IN THEIR ENTIRETY BY DOMESTIC AND INTERNATIONAL COPYRIGHT AND PATENT STATUTES. ANY UNAUTHORIZED USE, REPRODUCTION, PUBLICATION, DISTRIBUTION OR SALE IN WHOLE OR IN PART, IS STRICTLY FORBIDDEN.</small>																																														
						<table border="1" style="width: 100%; border-collapse: collapse; font-size: 8px;"> <thead> <tr> <th>①</th> <th>FINISH</th> <th>MANUFACTURER</th> <th>SPECIFICATION</th> </tr> </thead> <tbody> <tr><td>1</td><td>BRONZESTONE</td><td>INTERSTATE BRICK</td><td>ATLAS STRUCTURAL BRICK</td></tr> <tr><td>2</td><td>MIDNIGHT</td><td>INTERSTATE BRICK</td><td>ATLAS STRUCTURAL BRICK</td></tr> <tr><td>3</td><td>BRUSHED ALUMINUM</td><td>REYNOLDBOND</td><td>PASCIA</td></tr> <tr><td>4</td><td>QT RED</td><td>SHERWIN-WILLIAMS</td><td>STANDING SEAM AWNING</td></tr> <tr><td>5</td><td>RED POLYCARBONATE</td><td>ALLEN INDUSTRIES</td><td>ILLUMINATED BAND</td></tr> <tr><td>6</td><td>QT BROWN</td><td>SHERWIN-WILLIAMS</td><td>METALPAINT</td></tr> <tr><td>7</td><td>BLACK</td><td>ALL COURT FABRICS</td><td>POLYPRO 95 MESH</td></tr> <tr><td>8</td><td>CL-60R</td><td>ALLEN INDUSTRIES</td><td>SIGNAGE</td></tr> <tr><td>9</td><td>GRANITE</td><td>STO</td><td>ATOGG EIFS</td></tr> <tr><td>10</td><td>IDB-20</td><td>ALLEN INDUSTRIES</td><td>ILLUMINATED SIGNAGE</td></tr> </tbody> </table>		①	FINISH	MANUFACTURER	SPECIFICATION	1	BRONZESTONE	INTERSTATE BRICK	ATLAS STRUCTURAL BRICK	2	MIDNIGHT	INTERSTATE BRICK	ATLAS STRUCTURAL BRICK	3	BRUSHED ALUMINUM	REYNOLDBOND	PASCIA	4	QT RED	SHERWIN-WILLIAMS	STANDING SEAM AWNING	5	RED POLYCARBONATE	ALLEN INDUSTRIES	ILLUMINATED BAND	6	QT BROWN	SHERWIN-WILLIAMS	METALPAINT	7	BLACK	ALL COURT FABRICS	POLYPRO 95 MESH	8	CL-60R	ALLEN INDUSTRIES	SIGNAGE	9	GRANITE	STO	ATOGG EIFS	10	IDB-20	ALLEN INDUSTRIES	ILLUMINATED SIGNAGE
①	FINISH	MANUFACTURER	SPECIFICATION																																																
1	BRONZESTONE	INTERSTATE BRICK	ATLAS STRUCTURAL BRICK																																																
2	MIDNIGHT	INTERSTATE BRICK	ATLAS STRUCTURAL BRICK																																																
3	BRUSHED ALUMINUM	REYNOLDBOND	PASCIA																																																
4	QT RED	SHERWIN-WILLIAMS	STANDING SEAM AWNING																																																
5	RED POLYCARBONATE	ALLEN INDUSTRIES	ILLUMINATED BAND																																																
6	QT BROWN	SHERWIN-WILLIAMS	METALPAINT																																																
7	BLACK	ALL COURT FABRICS	POLYPRO 95 MESH																																																
8	CL-60R	ALLEN INDUSTRIES	SIGNAGE																																																
9	GRANITE	STO	ATOGG EIFS																																																
10	IDB-20	ALLEN INDUSTRIES	ILLUMINATED SIGNAGE																																																

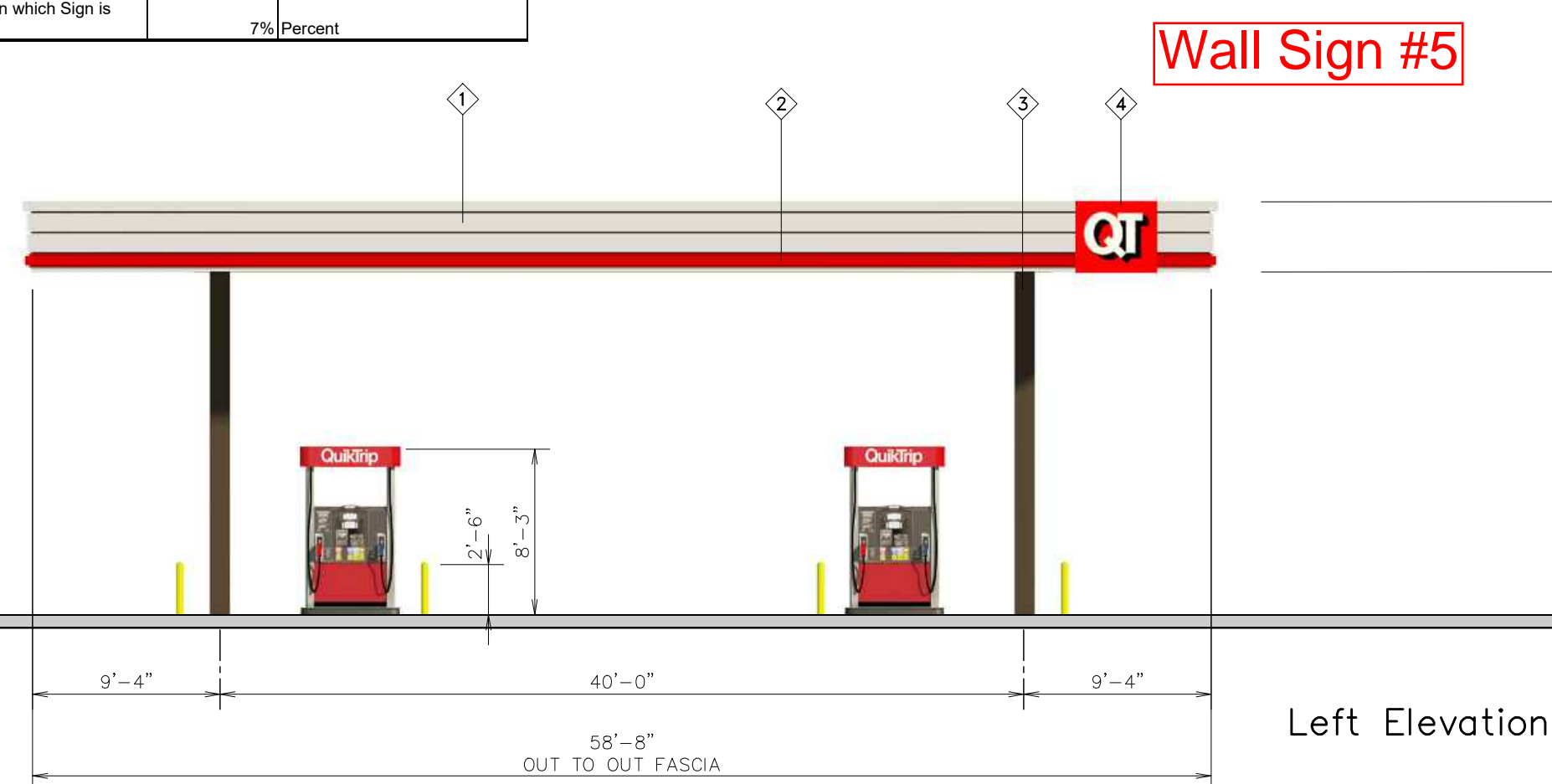
ELEVATIONS

QT 4448 ADDITION SUBDIVISION

LOT 1



Wall Sign #	Description - CL-60-F	Value	Unit
1	i) Width of Façade - on which Sign is Located	92.33	Feet
	ii) Height of Façade - on which Sign is Located	20.00	Feet
	iii) Square Footage of Façade - on which Sign is Located	1,846.60	Square Feet
	v) Width of Sign Face	19.38	Feet
	vi) Height of Sign Face	6.33	Feet
	vii) Square Footage of Sign Face	122.64	Square Feet
	viii) Percent of Sign Coverage - Façade on which Sign is Located	7%	Percent
2	i) Width of Façade - on which Sign is Located	92.33	Feet
	ii) Height of Façade - on which Sign is Located	20.00	Feet
	iii) Square Footage of Façade - on which Sign is Located	1,846.60	Square Feet
	v) Width of Sign Face	4.71	Feet
	vi) Height of Sign Face	4.13	Feet
	vii) Square Footage of Sign Face	19.42	Square Feet
	viii) Percent of Sign Coverage - Façade on which Sign is Located	1%	Percent
3	i) Width of Façade - on which Sign is Located	92.33	Feet
	ii) Height of Façade - on which Sign is Located	20.00	Feet
	iii) Square Footage of Façade - on which Sign is Located	1,846.60	Square Feet
	v) Width of Sign Face	4.71	Feet
	vi) Height of Sign Face	4.13	Feet
	vii) Square Footage of Sign Face	19.42	Square Feet
	viii) Percent of Sign Coverage - Façade on which Sign is Located	1%	Percent
4	i) Width of Façade - on which Sign is Located	124.17	Feet
	ii) Height of Façade - on which Sign is Located	3.50	Feet
	iii) Square Footage of Façade - on which Sign is Located	434.60	Square Feet
	v) Width of Sign Face	4.00	Feet
	vi) Height of Sign Face	3.50	Feet
	vii) Square Footage of Sign Face	14.00	Square Feet
	viii) Percent of Sign Coverage - Façade on which Sign is Located	3%	Percent
5	i) Width of Façade - on which Sign is Located	92.67	Feet
	ii) Height of Façade - on which Sign is Located	3.50	Feet
	iii) Square Footage of Façade - on which Sign is Located	205.35	Square Feet
	v) Width of Sign Face	4.00	Feet
	vi) Height of Sign Face	3.50	Feet
	vii) Square Footage of Sign Face	14.00	Square Feet
	viii) Percent of Sign Coverage - Façade on which Sign is Located	7%	Percent
6	i) Width of Façade - on which Sign is Located	92.67	Feet
	ii) Height of Façade - on which Sign is Located	3.50	Feet
	iii) Square Footage of Façade - on which Sign is Located	205.35	Square Feet
	v) Width of Sign Face	4.00	Feet
	vi) Height of Sign Face	3.50	Feet
	vii) Square Footage of Sign Face	14.00	Square Feet
	viii) Percent of Sign Coverage - Façade on which Sign is Located	7%	Percent



18'-6" Min. / 25'-6" Max.
 AFF Top of Canopy
 15'-0" Min. Store Side Canopies / 20'-0" Max.
 17'-0" Min. Store Front Canopies / 22'-0" Max.
 AFF Bottom of Canopy



QuikTrip.
 4705 South 129th East Ave.
 Tulsa, OK 74134-7008
 P.O. Box 3475
 Tulsa, OK 74101-3475
 (918) 615-7700

ELEVATIONS - QT 4448 ADDITION SUBDIVISION LOT 1

Store # 4448 Double Stack 8 Canopy Elevations

Address: Eola and Diehl

City, State: Aurora, IL

Serial # 84-4448-GD08

Scale: 1/8" = 1'-0"

Issue Date: 02.25.25

Drawn By: BP

Rev/Notes:

COPYRIGHT © 2011 QUIKTRIP CORPORATION DESIGN PATENTS
 QUIKTRIP PLANS ARE THE EXCLUSIVE PROPERTY OF QUIKTRIP CORPORATION, TULSA, OKLAHOMA. THESE PLANS ARE PROTECTED IN THEIR ENTIRETY BY DOMESTIC AND INTERNATIONAL COPYRIGHT AND PATENT STATUTES. ANY UNAUTHORIZED USE, REPRODUCTION, PUBLICATION, DISTRIBUTION OR SALE IN WHOLE OR IN PART, IS STRICTLY FORBIDDEN.

①	FINISH	MANUFACTURER	SPECIFICATION
1	BRUSHED ALUMINUM	REYNOLDBOND	CANOPY
2	RED POLYCARBONATE	ALLEN INDUSTRIES	ILLUMINATED BAND
3	QT BROWN	SHERWIN - WILLIAMS	METAL PAINT
4	IDC-14	ALLEN INDUSTRIES	ILLUMINATED SIGNAGE
5	BRONZE STONE	INTERSTATE BRICK	ALL AS STRUCTURAL BRICK
6	BLACK	ALL COURT FABRICS	POLYPRO 95 MESH

*SIGN PACKAGE
QT 4448 ADDITION SUBDIVISION
LOT 1*

*QuikTrip Store No. 4448
Eola Road (IL 14) & Diehl Road
Aurora, Illinois 60502*

*Front Center Building Sign
CL-60-F*

Wall Sign 1

24V Max LED

Gen III Sign Design

Raised Panel Design: Two (2) Section Sign Frame with Removable Break Formed Aluminum Face Panels

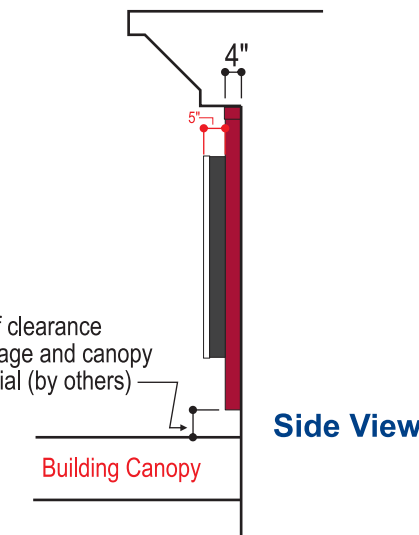
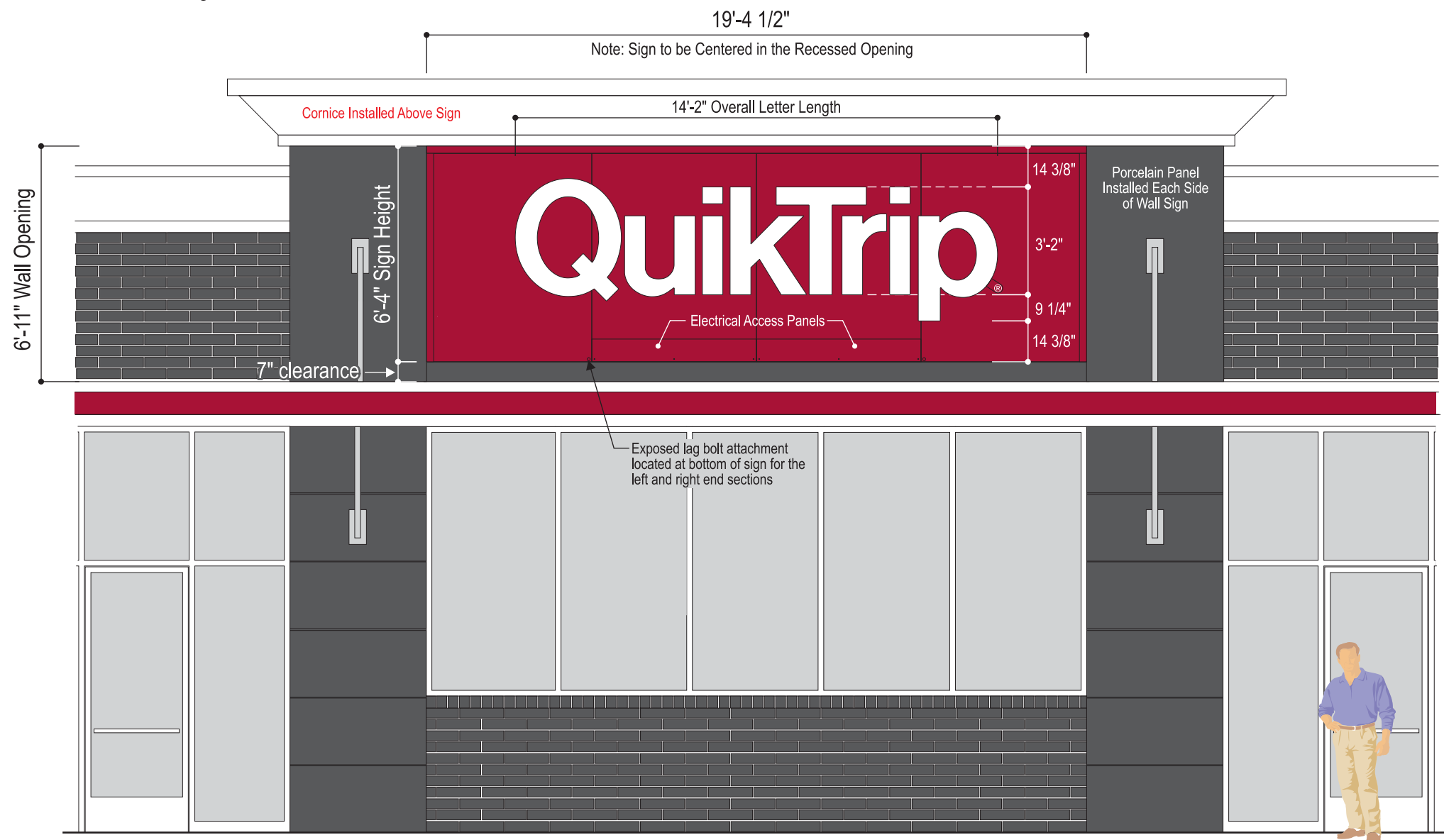
Each of the Two (2) Sign Sections to be installed to the Wall with final electrical connection thru the provided access panels located at the bottom center sign sections.

Sign Manufactured in Two (2) Equal Half Sections.

Fabricated Aluminum Wall Sign with Projected Aluminum Channel Letters
 Internally Illuminated White LED Formed Evonik Cyro SG-7328 Face Panels



Top View



COLOR REFERENCE:

NOTE: AKZO NOBLE PAINT SPECIFIED FOR ALL PAINTED SURFACES

EMBOSSSED FACE PANELS: TRANSLUCENT WHITE
 EVONIK CYRO SG-7328 NON-GLARE FINISH

QT RED, AKZO NOBLE PAINT MATCH 3M CARDINAL
 RED TRANSLUCENT VINYL #3632-53, SATIN FINISH

LETTER RETURNS TO BE AKZO NOBLE PAINT MATCH
 TO BENJAMIN MOORE #2134-30 IRON MOUNTAIN

Front View - Sign Type G3S CL-60-F
Projected Channel Letters with White LED Illuminated Evonik Cyro SG-7328 Faces

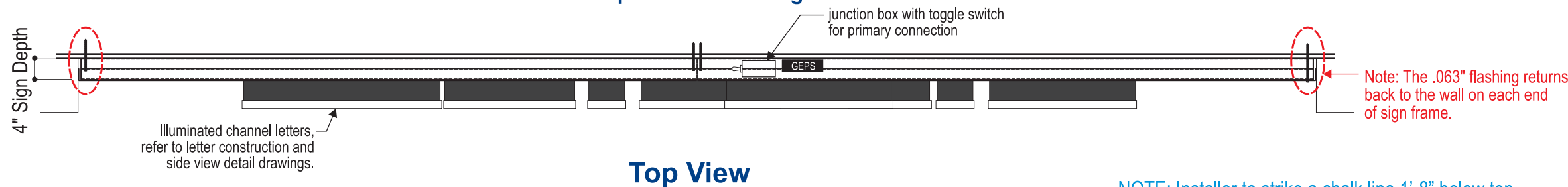
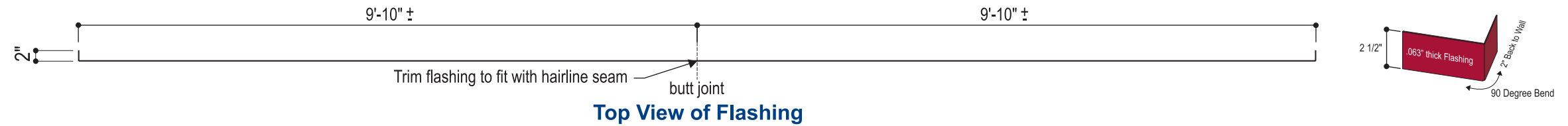
Scale 1/4" = 1'-0"



G3S CL-60-F Construction Detail

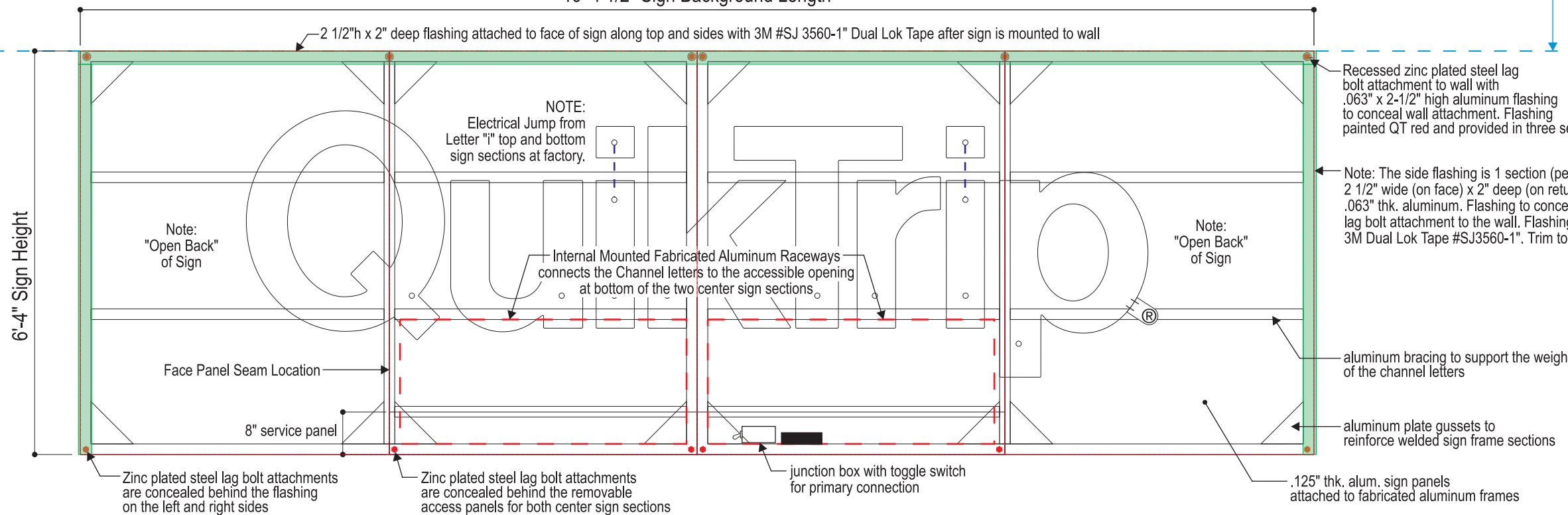
Note: The top flashing is 2 sections of 10'-0" long x 2 1/2" wide with 2" return x .063" thk. aluminum and breaks back 2" (by installer) to the wall on each end of sign frame.
 Flashing to conceal the recessed Lag Bolt attachment to the wall. Flashing attached with 3M Dual Lok Tape #SJ3560-1". Trim to fit in field.

24V Max LED



Sign Manufactured in Two (2) Equal Half Sections.
 19'-4 1/2" Sign Background Length

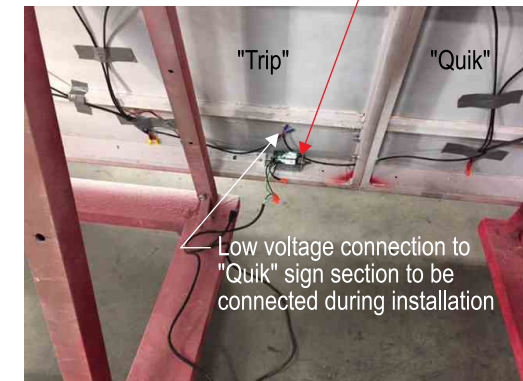
NOTE: Installer to strike a chalk line 1'-8" below top of masonry at front elevation. Set top finished surface of box sign to align with chalk line to allow for coping installation



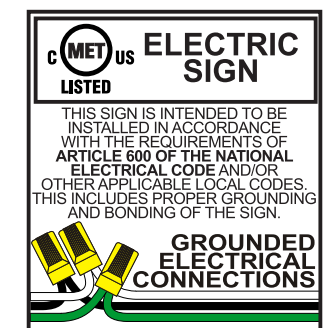
Allen Industries to provide lag bolts for sign attachment to plywood covered wall.
 18 Total Qty. - 16 req'd + 2 extra - 3/8" x 6" Steel lag Bolts

Internal fabricated aluminum raceways contain the remote located GE power supplies allowing service access through the removable service doors located at the bottom center sign sections to maintain UL approved construction.

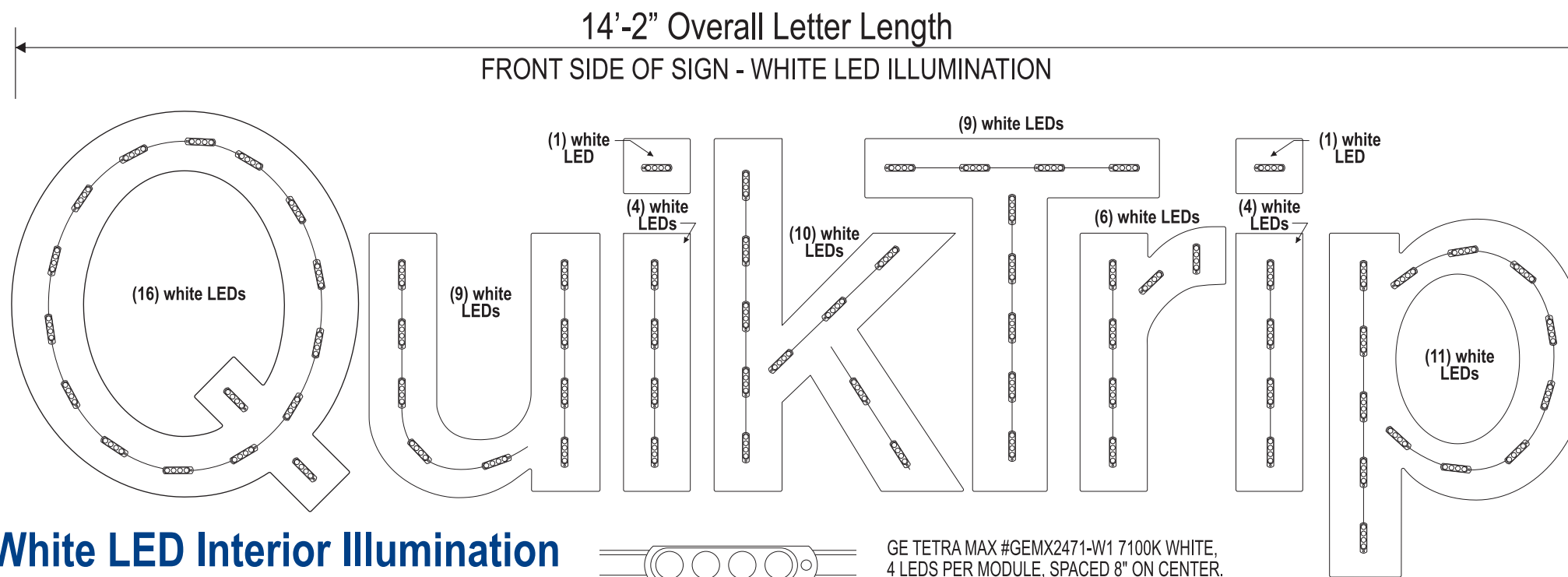
Primary power connection in junction box with toggle switch



.125" alum. break-formed "L" bracket. Bracket is painted BM #2134-30 Iron Mountain, Front surface is laminated with 3M Cardinal red vinyl #3632-53. White vinyl ® is applied red vinyl surface.



24V Max LED



White LED Interior Illumination
 Scale 3/4" = 1'-0"

- ◆ **TOTAL: APP. 71 TOTAL WHITE TETRA MAX LED MODULES**
- (1) GEPS24-100U LED Power Supplies**

GE TETRA MAX #GEMX2471-W1 7100K WHITE,
 4 LEDS PER MODULE, SPACED 8" ON CENTER.
 100' = 150 MODULES PER PACKAGE
 (CAN CUT BETWEEN EVERY MODULE)
 12 AWG SUPPLY WIRE, 40' MAX. WIRE LIMITS
 GE POWER SUPPLY:
 GEPS24-100U **PULLS MAX. 130 MODULES**
 (87 FT. PER POWER SUPPLY)
 ENERGY CONSUMPTION: STRIP: 0.73 W/MODULE
 AMP LOAD = APP. 3 AMPS

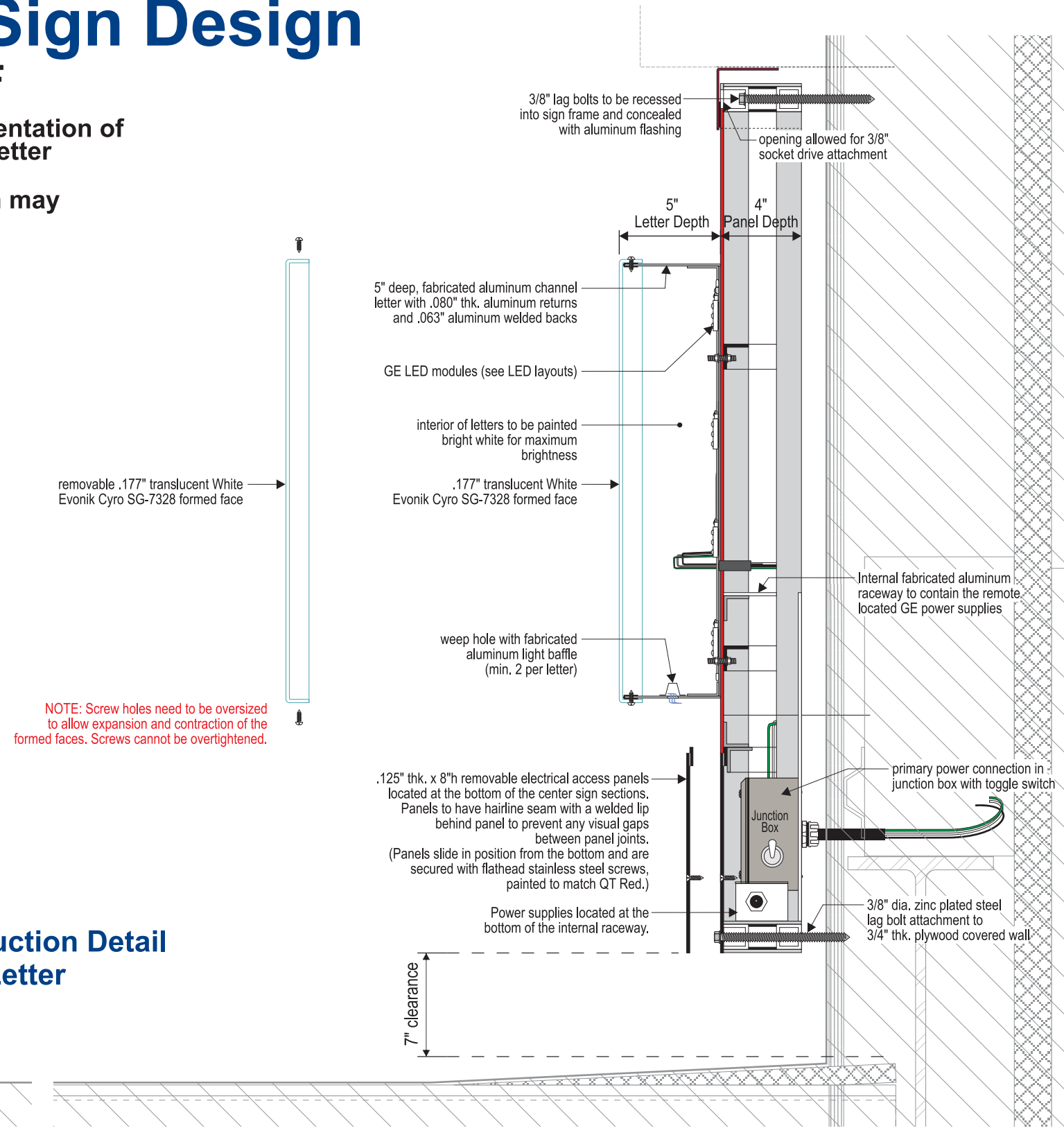


Gen III Sign Design

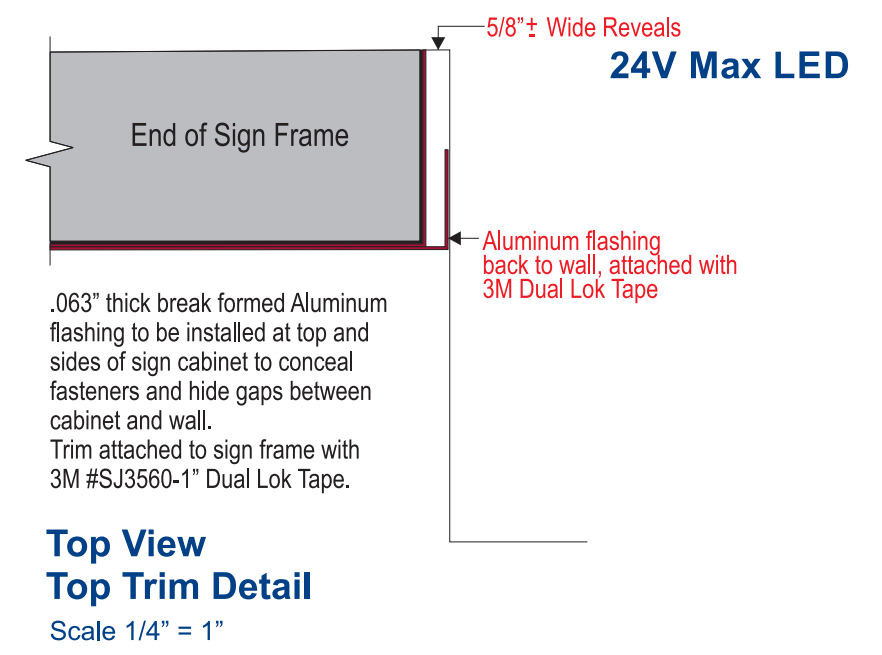
G3S CL-60-F

Drawing for Representation of Sign and Channel Letter Construction. Actual Construction may vary slightly.

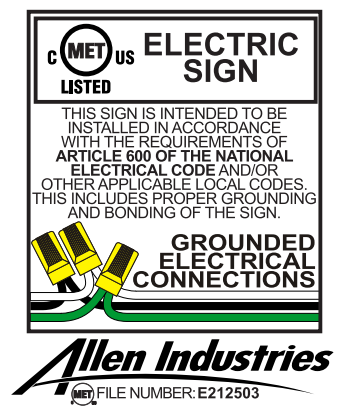
Side View Construction Detail
LED Illuminated Letter
Scale 3/16" = 1"



NOTE: Screw holes need to be oversized to allow expansion and contraction of the formed faces. Screws cannot be overtightened.



Top View
Top Trim Detail
Scale 1/4" = 1"



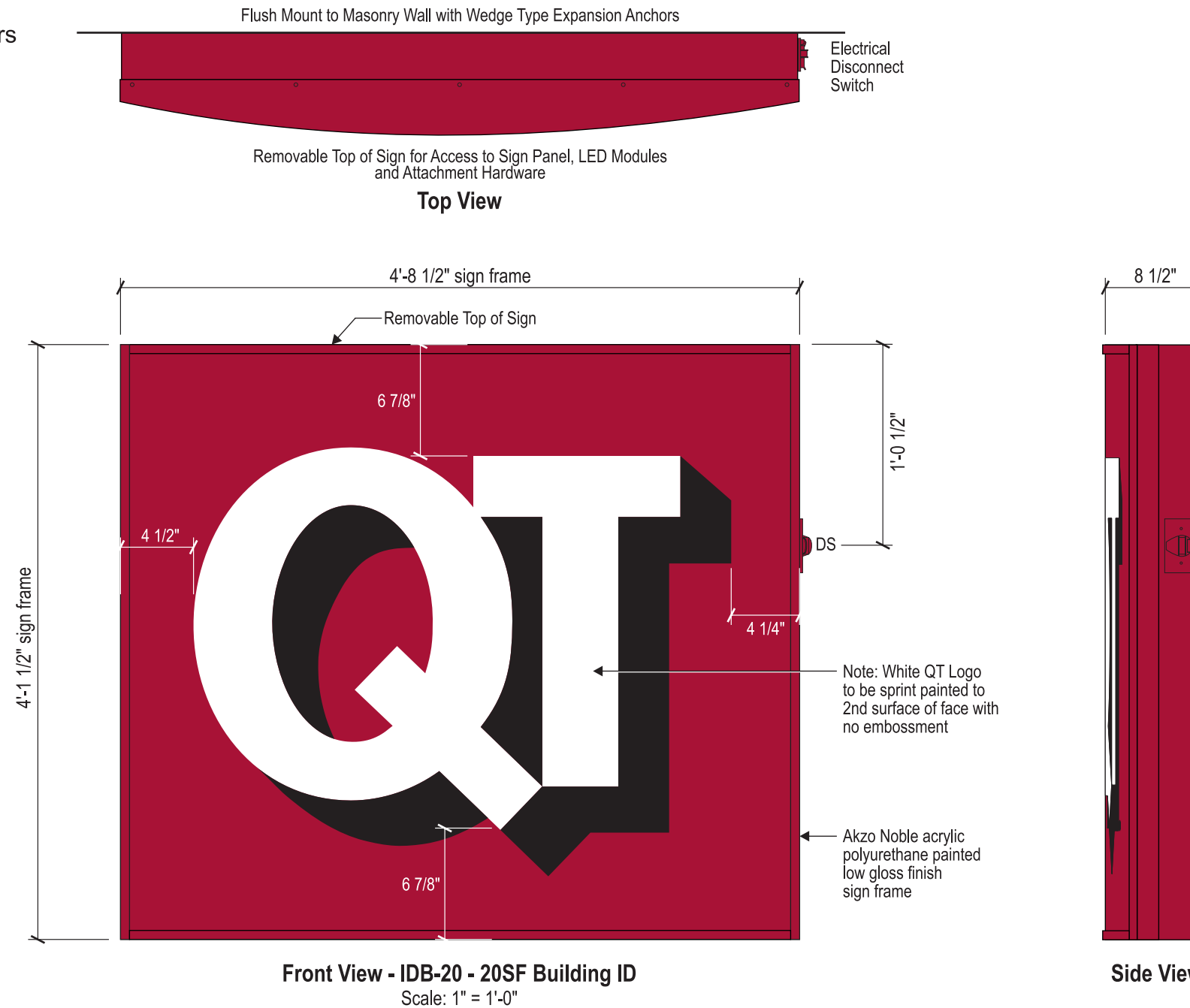
*QuikTrip Store No. 4448
Eola Road (IL 14) & Diehl Road
Aurora, Illinois 60502*

*Front Outer Building Sign
IDB-20*

Wall Sign 2 & 3

**G3S
IDB-20
20SF Building ID Sign**



- Flat bowed face panel and 3/4" wide face retainers
- 19.42 SF of Sign Area



G3S COLOR PALETTE

	AKZO NOBLE OPAQUE SILVER		AKZO NOBLE BLACK - LOW GLOSS		AKZO NOBLE MATCH 3M CARDINAL RED #3632-53 TRANSLUCENT VINYL
	AKZO NOBLE TRANSLUCENT WHITE		INTERIOR OF SIGN WHITE - MATTE FINISH		AKZO NOBLE MATCH PMS 349C

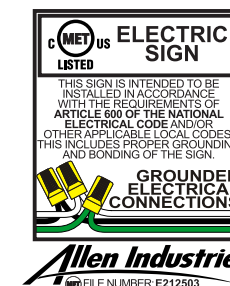
DIRECTIONAL COPY & ARROW COLOR:

	3M DAY/NIGHT VINYL #3635-0171 FILM FOR 2ND SURFACE APPLICATION OF THE DIRECTIONAL COPY & ARROW. DK GRAY/DAY - LT. GRAY / NIGHT
	

Cyro: Acrylite Resist 65, .177" thickness, face panels with 2nd surface painted background colors and graphics.

Regarding Fabrication Fit & Finish of All QT Signs:

- Visible fabrication seams and welded joints are to be sanded smooth, filled and finished to QT specifications.
- Any visible fasteners are to be countersunk and have painted heads.
- Face retainers must fit flush and have even, minimal seams.
- Any variation from this directive must be brought to the attention of the QT Quality Control Manager without delay.



**G3S
IDB-20
20SF Building ID Sign**

- Flat bowed face panel and 3/4" wide face retainers
- 19.42 SF of Sign Area

LED Specification

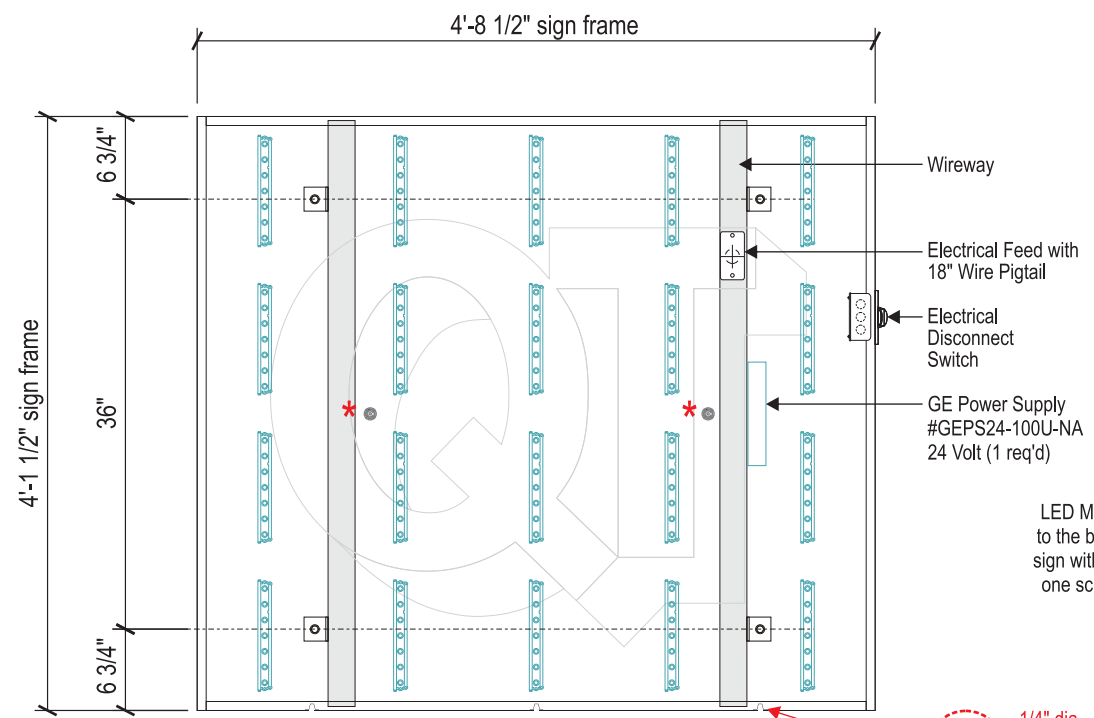
E 25 ea. GESS2471-2
1 ea. GEPS24-100U-NA
Total Electrical Amp Load = 1.1 Amps
One (1) 120 Volt - 20 Amp
Circuit Breaker Required for Sign



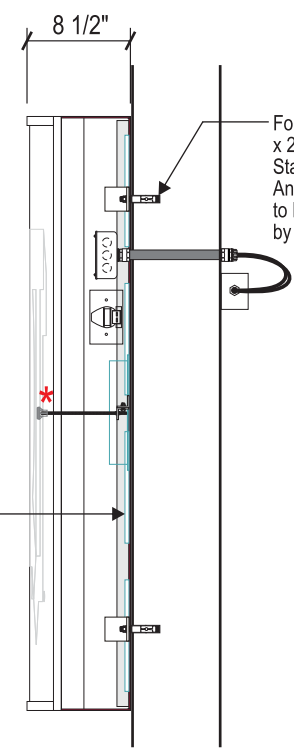
LED DETAIL
#GESS2471-2 24 VOLT SINGLE SIDED
LED Internal Illumination powered by
GE Power Supply #GEPS24-100U-NA
120-277 VAC 50/60 HZ
Input Current 1.1 Amp
Output Current 4.0 Amps Single Output
Note: 36 Module Max. Load per Power Supply



Top View
Scale: 3/4" = 1'-0"

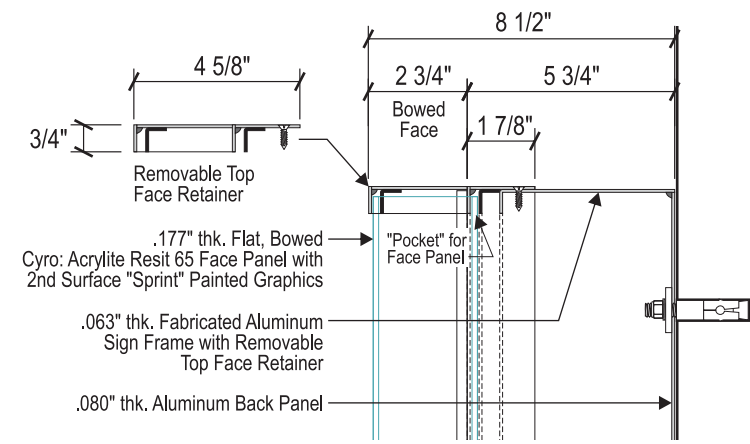
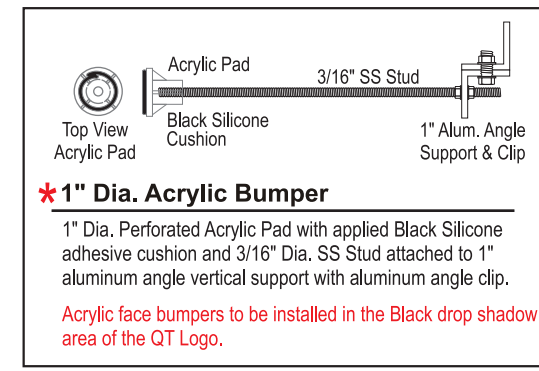


Front View - IDB-20 - 20SF Building ID
Scale: 3/4" = 1'-0"



Side View

1/4" dia. Water Drain Holes with .040" Fab. Aluminum Light Baffle





Side Section View
Scale: 3/16" = 1"

G3S COLOR PALETTE

	AKZO NOBLE OPAQUE SILVER		AKZO NOBLE BLACK - LOW GLOSS		AKZO NOBLE MATCH 3M CARDINAL RED #3632-53 TRANSLUCENT VINYL
	AKZO NOBLE TRANSLUCENT WHITE		INTERIOR OF SIGN WHITE - MATTE FINISH		AKZO NOBLE MATCH PMS 349C

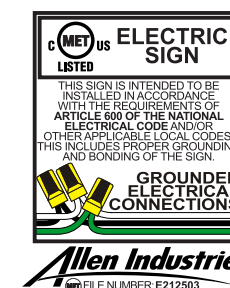
DIRECTIONAL COPY & ARROW COLOR:

	3M DAY/NIGHT VINYL #3635-0171 FILM FOR 2ND SURFACE APPLICATION OF THE DIRECTIONAL COPY & ARROW. DK GRAY/DAY - LT. GRAY / NIGHT
	

Cyro: Acrylite Resit 65, .177" thickness,
face panels with 2nd surface painted
background colors and graphics.

Regarding Fabrication Fit & Finish of All QT Signs:

- Visible fabrication seams and welded joints are to be sanded smooth, filled and finished to QT specifications.
- Any visible fasteners are to be countersunk and have painted heads.
- Face retainers must fit flush and have even, minimal seams.
- Any variation from this directive must be brought to the attention of the QT Quality Control Manager without delay.



**G3S
IDB-20
20SF Building ID Sign**

- Flat bowed face panel and 3/4" wide face retainers
- 19.42 SF of Sign Area





Building Elevation
Scale: NTS

G3S COLOR PALETTE

	AKZO NOBLE OPAQUE SILVER		AKZO NOBLE BLACK - LOW GLOSS		AKZO NOBLE MATCH 3M CARDINAL RED #3632-53 TRANSLUCENT VINYL
	AKZO NOBLE TRANSLUCENT WHITE		INTERIOR OF SIGN WHITE - MATTE FINISH		AKZO NOBLE MATCH PMS 349C

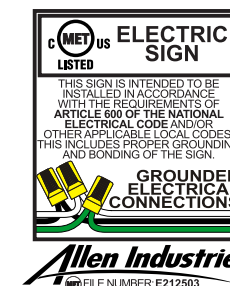
DIRECTIONAL COPY & ARROW COLOR:

	3M DAY/NIGHT VINYL #3635-0171 FILM FOR 2ND SURFACE APPLICATION OF THE DIRECTIONAL COPY & ARROW. DK GRAY/DAY - LT. GRAY / NIGHT
	

Cyro: Acrylite Resist 65, .177" thickness,
face panels with 2nd surface painted
background colors and graphics.

Regarding Fabrication Fit & Finish of All QT Signs:

- ÿ Visible fabrication seams and welded joints are to be sanded smooth, filled and finished to QT specifications.
- ÿ Any visible fasteners are to be countersunk and have painted heads.
- ÿ Face retainers must fit flush and have even, minimal seams.
- ÿ Any variation from this directive must be brought to the attention of the QT Quality Control Manager without delay.



*QuikTrip Store No. 4448
Eola Road (IL 14) & Diehl Road
Aurora, Illinois 60502*

*Canopy Sign
IDC-14*

Wall Sign 4, 5 & 6

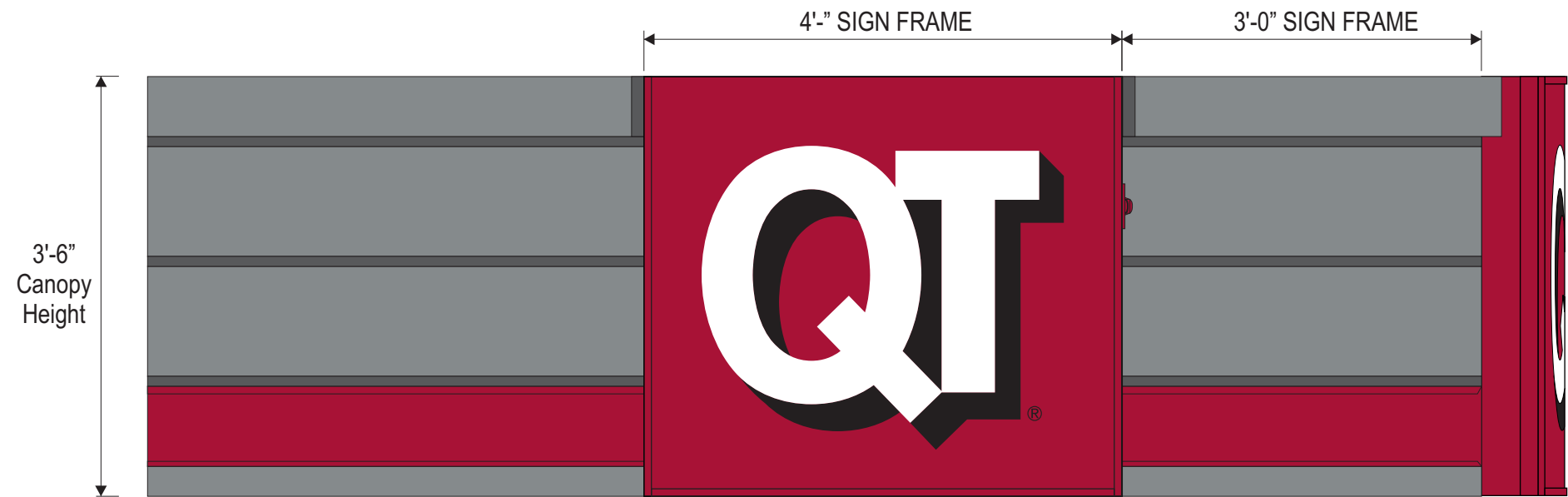
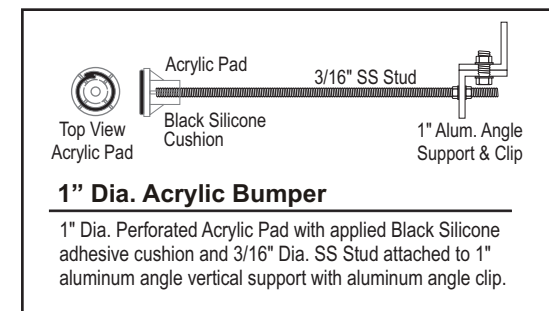
Bid Exhibit

IDC-14

General Sign Details

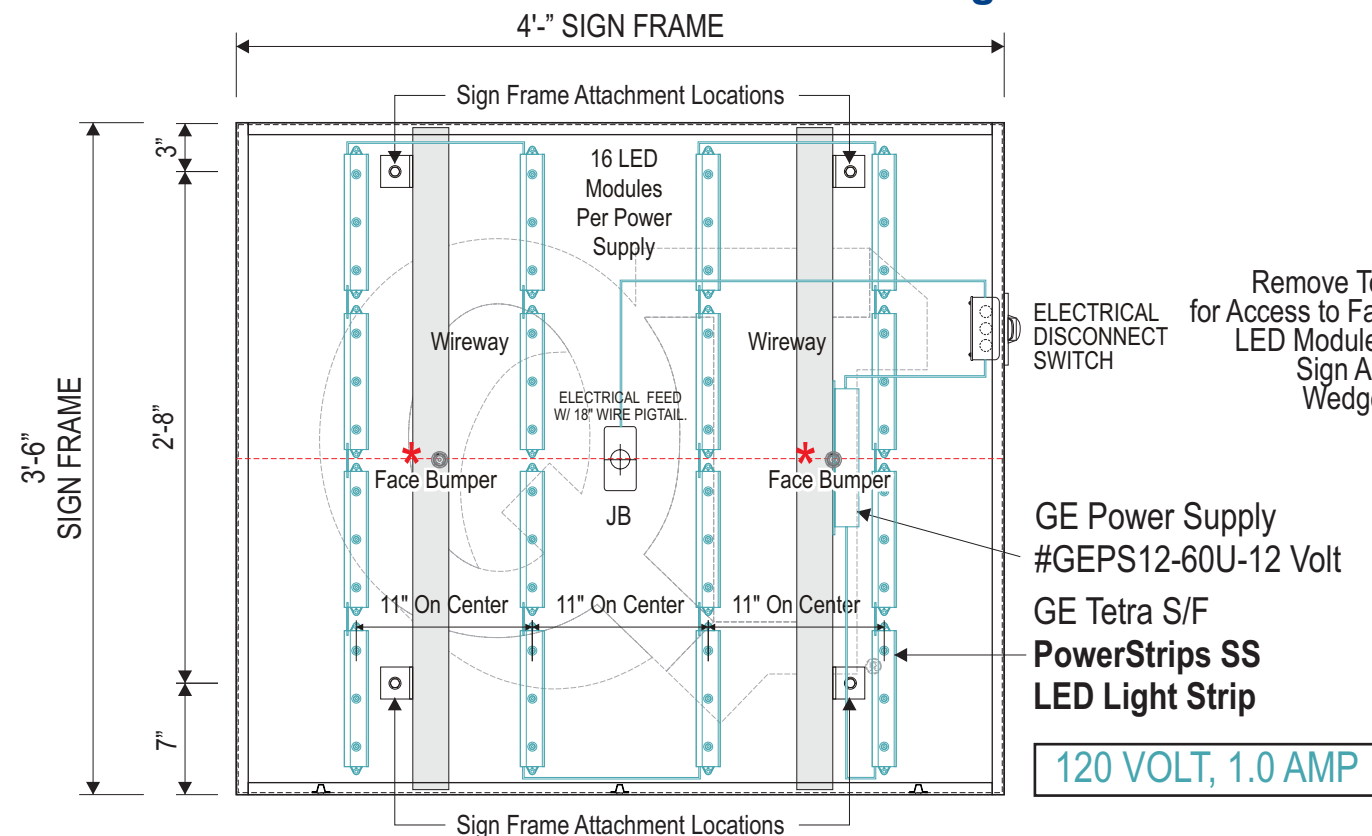
- The QT Gen3 Sign is a single face canopy mounted sign.
- Sign installed with Four (4) Qty. Stainless Steel All Thread Rods and Toggle Bolts for attachment to Metal Gas Canopy.
- All Attachment Hardware to be Provided by the Sign Installer.
- Electrical Junction Box is provided inside sign for electrical stub-out and connection thru wall.
- Final Electrical Connection to be Made by a Licensed Electrician.

Cyro: Acrylite Resist 65, .177" thickness,
face panels with 2nd surface painted
background colors and graphics.

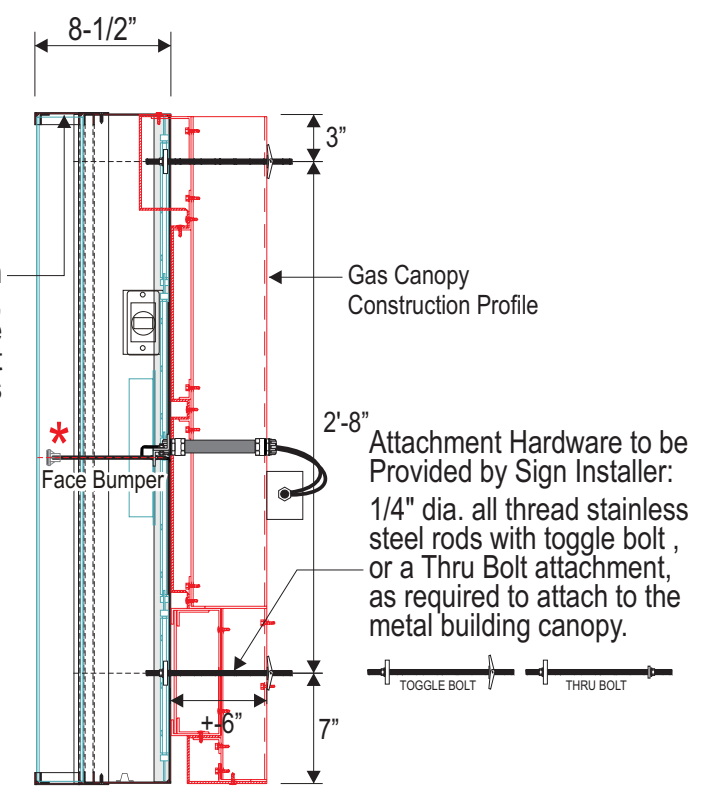


Front View - Sign Attachment to Gas Canopy

Side View



Remove Top of Sign for Access to Face Panel, LED Modules and the Sign Attachment Wedge Anchors



Front View - IDC-14 - 14 SF Gas Canopy Identification Sign

Side View

Scale 1" = 1'-0"



Declaration

The Drawing / Design illustrated is the property of QuikTrip Corporation and Allen Industries, Inc. The production, copying, or use hereof is prohibited without written consent. Any infringement will be subject to legal action.

Date / Notes / Comments

03/30/11 Issue Date
11/12/12 Sign Placement Specifications by QT

Project Information

QuikTrip Corporation
Gen III Exterior Sign Program - Bid Exhibit
File QT GEN3 IDC-14
Contacts Zach Campbell, or Stacy Bolton

*QuikTrip Store No. 4448
Eola Road (IL 14) & Diehl Road
Aurora, Illinois 60502*

*Monument Sign
MH-E3PGQ-CC-62*

Ground Sign 1 & Ground Sign 2

MH-E3PGQ-CC-62 Horizontal Monument Sign

- Three (3) Product LED Gas Price Sign
- 61.7 Square Feet Sign Area

Notes:
 1.) Engineering provided by QT.
 2.) Steel supports provided by sign installer.



Item #QT-MH-E3PGQ-CC-62

Project Information

Client: **QuikTrip**
 Location: **Various**

File: **QT-MH-E3PGQ-CC-62**

Sales: **House** Design: **CT** Project Manager: **James Gentry**

Date / Description

Date	Issue Date
01/17/20	
1	
2	
3	
4	
5	
6	
7	
8	
9	

Notes

-

Client Review Status

Allen Industries, Inc. requires that an "Approved" drawing be obtained from the client prior to any production release or production release revision.

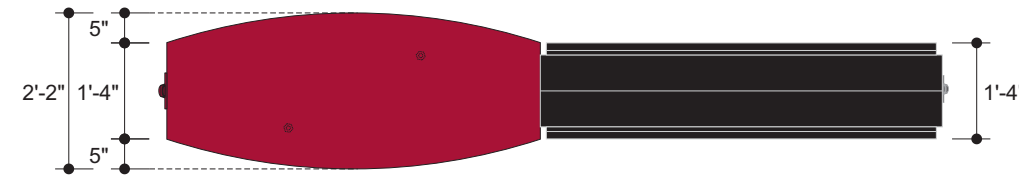
Approved
 Approved as Noted
 Revise & Resubmit

Name _____

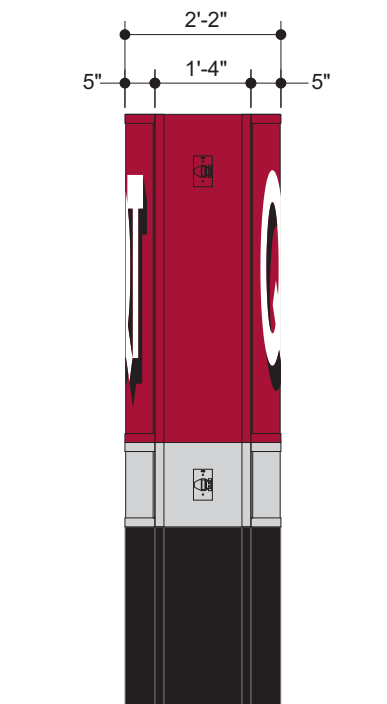
Title _____ Date _____

Declaration

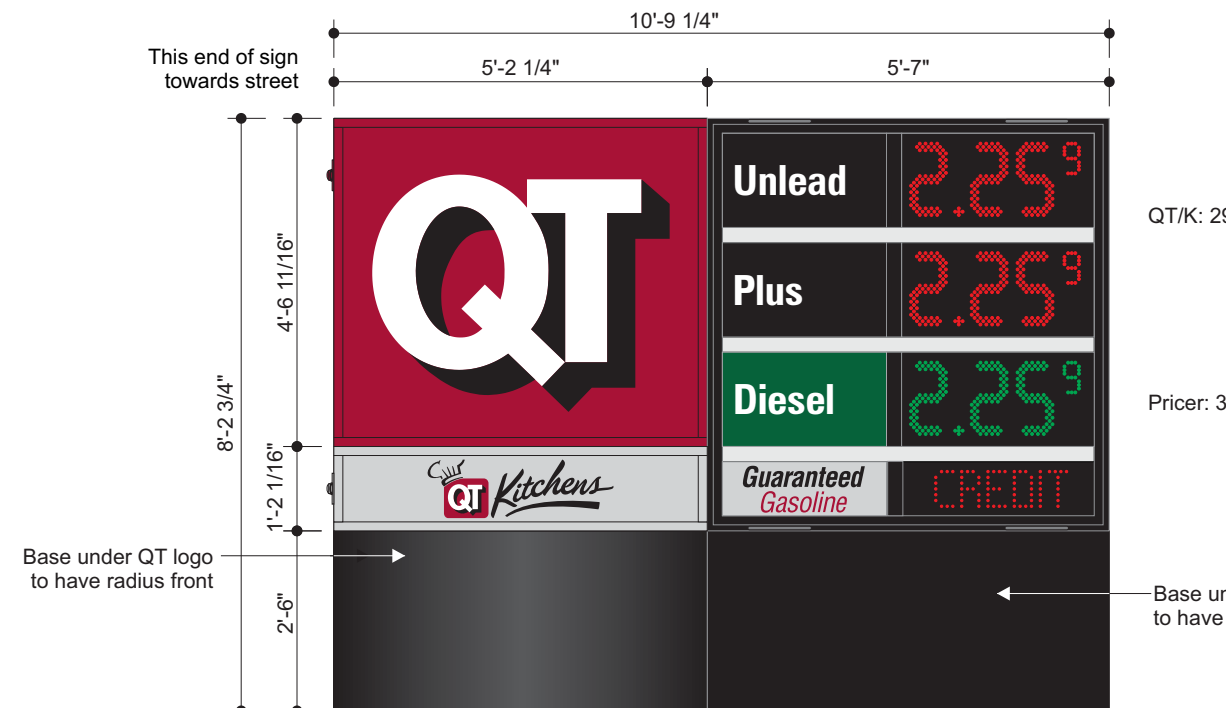
Copyright © 2020 Allen Industries, Inc.
 This is an original, unpublished drawing, created by Allen Industries, Inc. This drawing is submitted to you in confidence for your use solely in connection with the project being planned for you by Allen Industries, Inc. and is not to be shown to anyone outside your organization, nor used, reproduced, copied or exhibited in any fashion whatsoever. The designs shown on the drawing (except for any registered trademarks that may belong to a client of Allen Industries, Inc.) remain the property of Allen Industries, Inc.



Top View

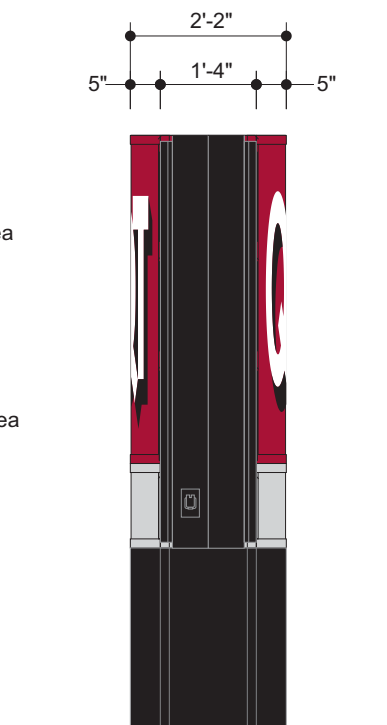


Side Elevation



Front Elevation

Scale: 3/8" = 1'-0"



Side Elevation

Color Specifications

- All Paint Finishes to be Akzo Nobel
- Opaque Silver
 - Translucent White
 - Black - Low Gloss
 - Matte White (Interior of Sign)
 - Match 3M Cardinal Red #3632-53
 - Match PMS 349C

QT/K: 29.72 SF Sign Area

Pricer: 31.98 SF Sign Area

Regarding Fabrication Fit & Finish of All QT Signs:

- Visible fabrication seams and welded joints are to be sanded smooth, filled and finished to QT specifications.
- Any visible fasteners are to be countersunk and have painted heads.
- Face retainers must fit flush and have even, minimal seams.
- Any variation from this directive must be brought to the attention of the QT Quality Control Manager without delay.

Listed Electric Sign Complies with UL48
 MET E212503 CSA C22.2 No. 207 A11 017510
 FILE NUMBER: E212503
 THIS SIGN IS INTENDED TO BE INSTALLED IN ACCORDANCE WITH THE REQUIREMENTS OF ARTICLE 600 OF THE NATIONAL ELECTRICAL CODE AND/OR OTHER APPLICABLE LOCAL CODES. THIS INCLUDES PROPER GROUNDING AND BONDING OF THE SIGN.

YOUR BRAND AT ITS BEST™
1-800-967-2553
www.allenindustries.com

Construction Details

- Installation by others
- Steel should be primed and painted white for max. reflectivity
- Engineering, steel size requirements and footing specifications are obtained by QT



Item #QT-MH-E3PGQ-CC-62

Project Information

Client
QuikTrip

Location
Various

File
QT-MH-E3PGQ-CC-62

Sales
House

Design
CT

Project Manager
James Gentry

Date / Description

Date	Description
01/17/20	Issue Date
1	
2	
3	
4	
5	
6	
7	
8	
9	

Notes

-

Client Review Status

Allen Industries, Inc. requires that an "Approved" drawing be obtained from the client prior to any production release or production release revision.

Approved Approved as Noted Revise & Resubmit

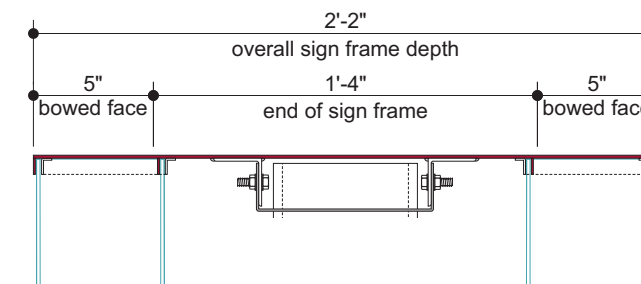
Name _____

Title _____ Date _____

Declaration

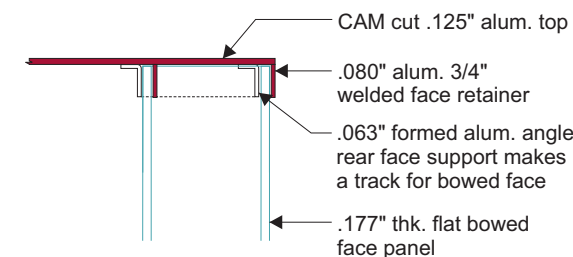
Copyright © 2020 Allen Industries, Inc.
This is an original, unpublished drawing, created by Allen Industries, Inc. This drawing is submitted to you in confidence for your use solely in connection with the project being planned for you by Allen Industries, Inc. and is not to be shown to anyone outside your organization, nor used, reproduced, copied or exhibited in any fashion whatsoever. The designs shown on the drawing (except for any registered trademarks that may belong to a client of Allen Industries, Inc.) remain the property of Allen Industries, Inc.

Allen Industries
YOUR BRAND AT ITS BEST™
1-800-967-2553
www.allenindustries.com



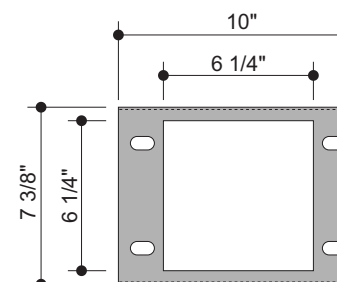
Sign Frame Detail

Scale: 1/8" = 1"

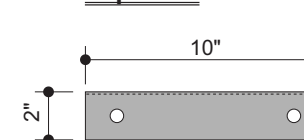


Side View Detail

Scale: 1/4" = 1"



Top View



Steel Saddle Detail

Scale: 1/8" = 1"

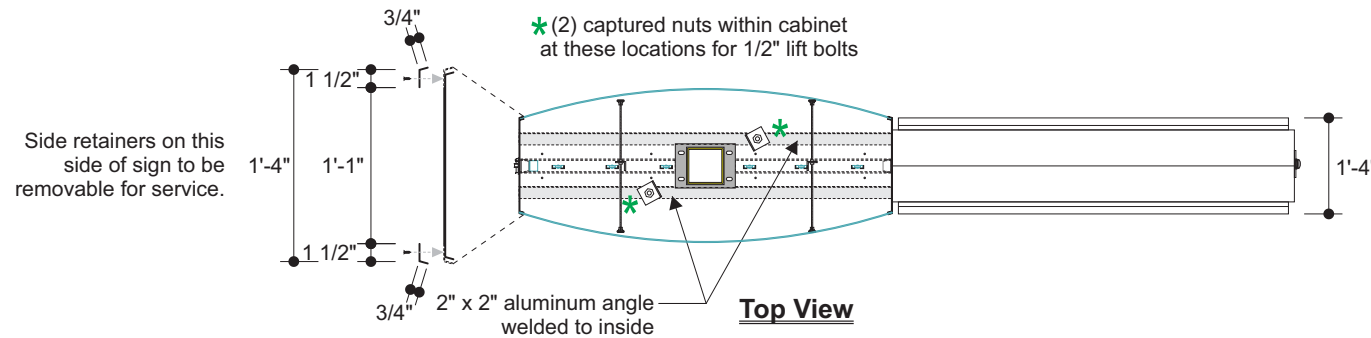
YELLOW INDICATES THE STEEL SUPPORT PROVIDED BY SIGN INSTALLER

Allen Industries FILE NUMBER: E212503

Listed Electric Sign Complies with UL48 CSA C22.2 No. 207 **A11 017510**

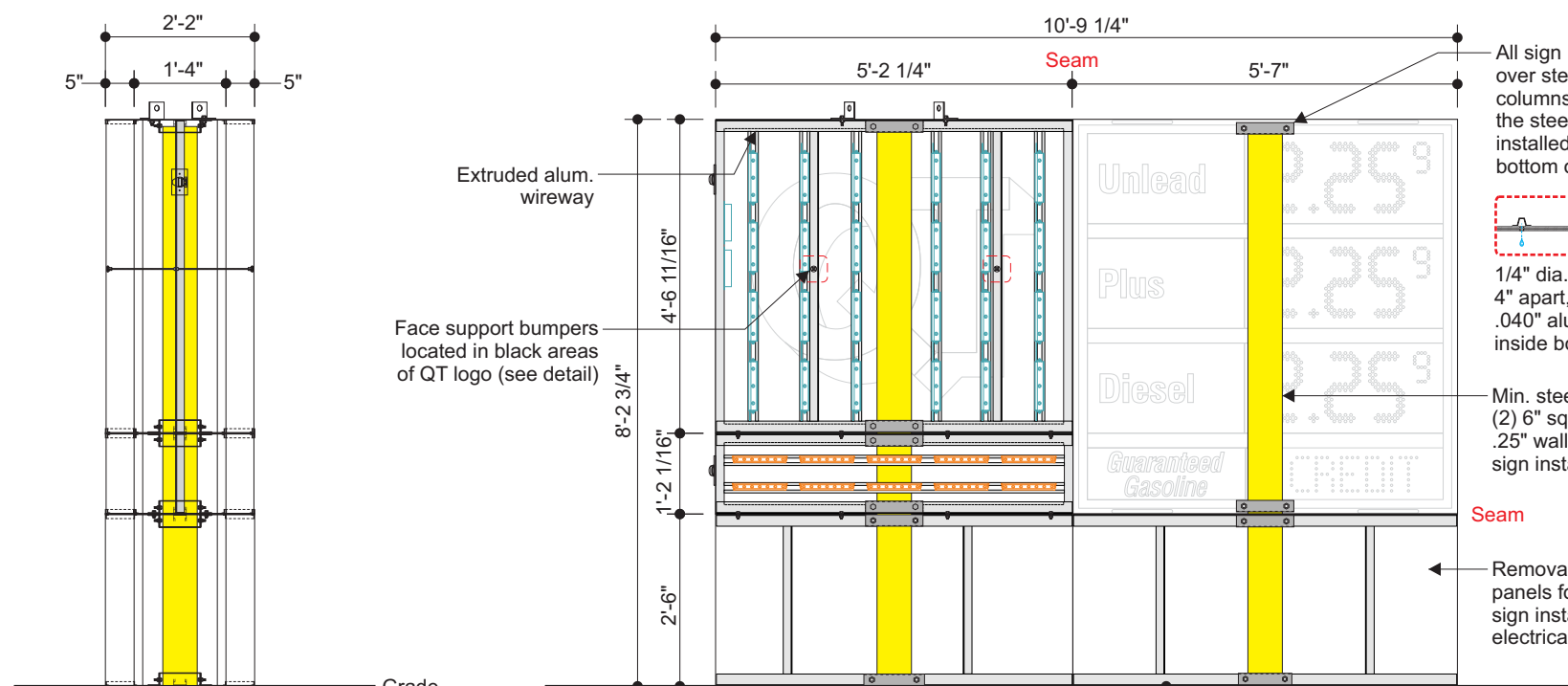
THIS SIGN IS INTENDED TO BE INSTALLED IN ACCORDANCE WITH THE REQUIREMENTS OF ARTICLE 600 OF THE NATIONAL ELECTRICAL CODE AND/OR OTHER APPLICABLE LOCAL CODES. THIS INCLUDES PROPER GROUNDING AND BONDING OF THE SIGN.

GROUNDING ELECTRICAL CONNECTIONS



Top View

Side retainers on this side of sign to be removable for service.



Front Elevation

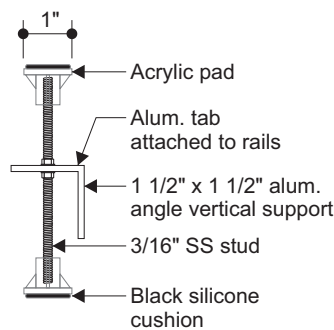
Scale: 3/8" = 1'-0"

Side Elevation



Top View

1" dia. perforated acrylic pad with applied black silicone adhesive cushion and 3/16" dia. SS stud, attached to vertical LED rails



Face Support Bumpers

Scale: NTS

All sign modules sleeve over steel support columns and are welded to the steel saddle braces installed at the top and bottom of each sign segment

1/4" dia. weep holes 4" apart, 1'-6" o.c., .040" alum. light baffles inside bottom of each section

Min. steel requirements: (2) 6" square steel pipes, with .25" wall - provided by sign installer

Removable skirt face panels for access to sign installation and electrical connection

*** NOTE: Drilled concrete footings to be as per licensed engineer's computations to meet all local and state building code requirements.**

Steel pipe supports set in a drilled concrete footing. Min. 1'-6" dia. x 5'-0" deep, 4000 PSI concrete.

Illumination Details



Item #QT-MH-E3PGQ-CC-62

Project Information

Client: QuikTrip
 Location: Various

File: QT-MH-E3PGQ-CC-62

Sales: House Design: CT Project Manager: James Gentry

Date / Description

Date	Description
01/17/20	Issue Date
1	
2	
3	
4	
5	
6	
7	
8	
9	

Notes

-

Client Review Status

Allen Industries, Inc. requires that an "Approved" drawing be obtained from the client prior to any production release or production release revision.

Approved Approved as Noted Revise & Resubmit

Name: _____

Title: _____ Date: _____

Declaration

Copyright © 2020 Allen Industries, Inc.
 This is an original, unpublished drawing, created by Allen Industries, Inc. This drawing is submitted to you in confidence for your use solely in connection with the project being planned for you by Allen Industries, Inc. and is not to be shown to anyone outside your organization, nor used, reproduced, copied or exhibited in any fashion whatsoever. The designs shown on the drawing (except for any registered trademarks that may belong to a client of Allen Industries, Inc.) remain the property of Allen Industries, Inc.

E QT LOGO
 (24) #GEWHDSP6 mods req'd
 (2) #GEPS24-100U-NA power supplies req'd
 Total electrical load = 2.2 Amps

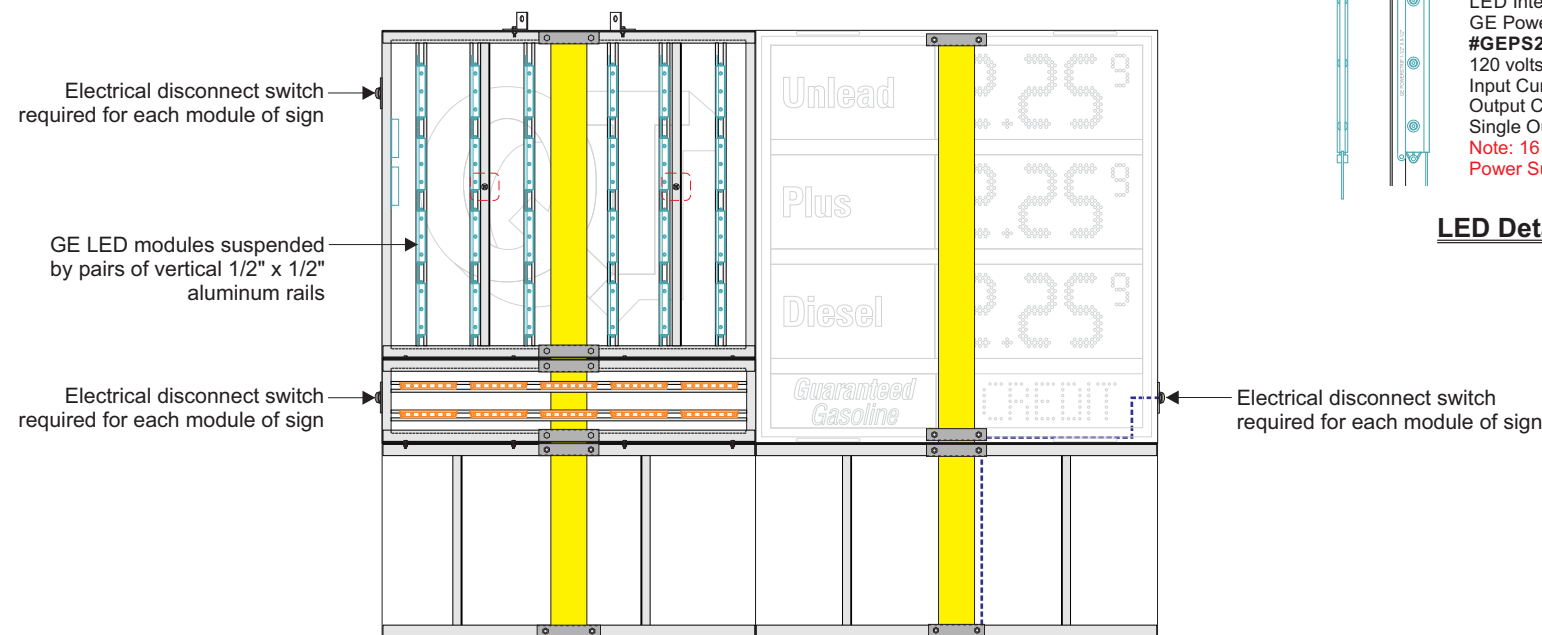
E QT KITCHENS
 (20) #GESS71-2 mods req'd
 (2) #GEPS24-100U-NA power supplies req'd
 Total electrical load = 2.2 Amps

E SKYLINE PRICER
 Input Voltage: 120VAC
 Control 24/7 = 5 Amps
 One (1) 120V/25 amp switched circuit req'd

#GESS2471-2
 24 VOLT SINGLE SIDED
 LED Internal Illumination powered by GE Power Supply
#GEPS24-100U-NA
 120-277 VAC 50/60 HZ
 Input Current 1.1 Amp
 Output Current 4.0 Amps
 Single Output
 Note: 36 Module Max. Load per Power Supply

#GEWHDSP6
 24 VOLT DOUBLE SIDED
 LED Internal Illumination powered by GE Power Supply
#GEPS24-100U-NA
 120 volts/240 VAC 50/60HZ,
 Input Current 1.1 Amp
 Output Current 4.0 amps
 Single Output
 Note: 16 Module Max. Load per Power Supply

LED Detail



Front Elevation
 Scale: 3/8" = 1'-0"

Electrical service and connection to sign to be provided by others. Electrical service to meet all state and local building code requirements.

Allen Industries
 FILE NUMBER: E212503

Listed Electric Sign Complies with
 UL48
 CSA C22.2 No. 207
 MET E212503 A11 017510

THIS SIGN IS INTENDED TO BE INSTALLED IN ACCORDANCE WITH THE REQUIREMENTS OF ARTICLE 600 OF THE NATIONAL ELECTRICAL CODE AND/OR OTHER APPLICABLE LOCAL CODES. THIS INCLUDES PROPER GROUNDING AND BONDING OF THE SIGN.

GROUNDING ELECTRICAL CONNECTIONS

Allen Industries
 YOUR BRAND AT ITS BEST™
1-800-967-2553
www.allenindustries.com

QT Logo Cabinet



Item #QT-MH-E3PGQ-CC-62

Project Information

Client: **QuikTrip**
 Location: **Various**

File: **QT-MH-E3PGQ-CC-62**

Sales: **House** Design: **CT** Project Manager: **James Gentry**

Date / Description

Date	Description
01/17/20	Issue Date

Notes

-

Client Review Status

Allen Industries, Inc. requires that an "Approved" drawing be obtained from the client prior to any production release or production release revision.

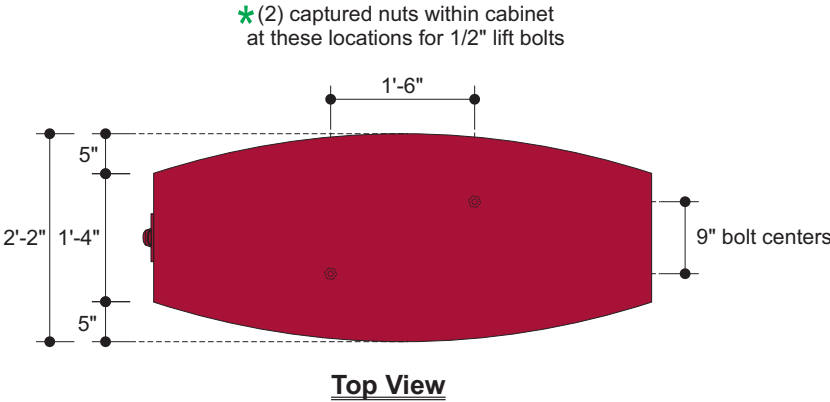
Approved
 Approved as Noted
 Revise & Resubmit

Name: _____

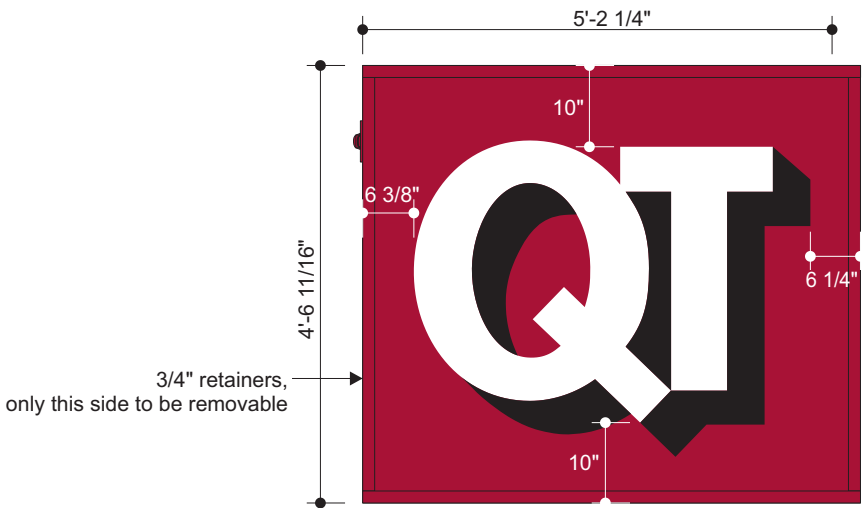
Title: _____ Date: _____

Declaration

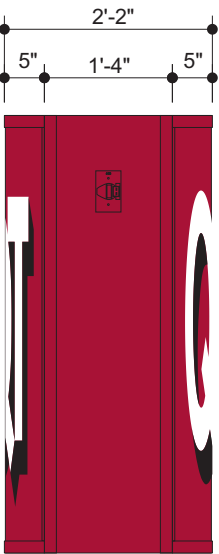
Copyright © 2020 Allen Industries, Inc.
 This is an original, unpublished drawing, created by Allen Industries, Inc. This drawing is submitted to you in confidence for your use solely in connection with the project being planned for you by Allen Industries, Inc. and is not to be shown to anyone outside your organization, nor used, reproduced, copied or exhibited in any fashion whatsoever. The designs shown on the drawing (except for any registered trademarks that may belong to a client of Allen Industries, Inc.) remain the property of Allen Industries, Inc.



Top View



Front View - QT Cabinet
 Scale: 1/2" = 1'-0"

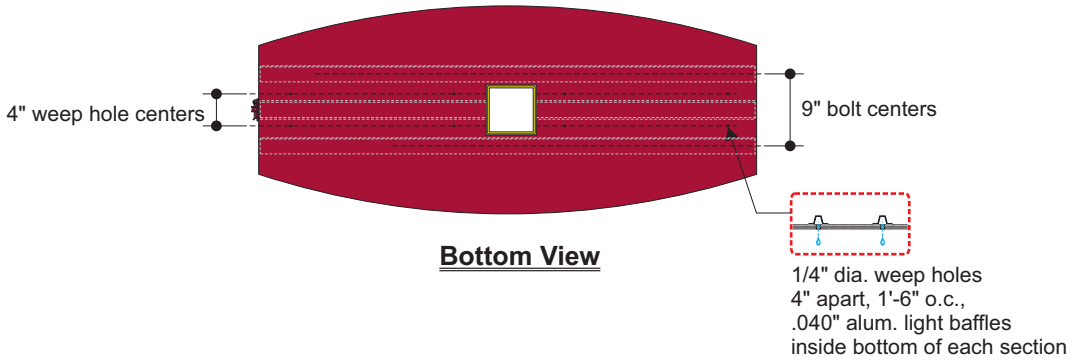


Side View

All Sign Modules constructed with removable alum. face retainers and clear acrylic, .177" thickness, face panels with 2nd surface painted background colors and graphics.

Note: No Embossment

Translucent Graphics Red Background Color to Paint Match 3M Cardinal Red #3632-53 Translucent Vinyl



Bottom View

Color Specifications

All Paint Finishes to be Akzo Nobel

- Translucent White
- Black - Low Gloss
- Matte White (Interior of Sign)
- Match 3M Cardinal Red #3632-53

Regarding Fabrication Fit & Finish of All QT Signs:

- Visible fabrication seams and welded joints are to be sanded smooth, filled and finished to QT specifications.
- Any visible fasteners are to be countersunk and have painted heads.
- Face retainers must fit flush and have even, minimal seams.
- Any variation from this directive must be brought to the attention of the QT Quality Control Manager without delay.

FILE NUMBER: E212503

Listed Electric Sign Complies with UL48
 MET CSA C22.2 No. 207
 E212503 A11 017510

GROUNDING AND BONDING OF THE SIGN.

QT Kitchens Cabinet



Item #QT-MH-E3PGQ-CC-62

Project Information

Client
QuikTrip
Location
Various

File
QT-MH-E3PGQ-CC-62

Sales **House** Design **CT** Project Manager **James Gentry**

Date / Description

Date	Issue Date
01/17/20	
1	
2	
3	
4	
5	
6	
7	
8	
9	

Notes

Client Review Status

Allen Industries, Inc. requires that an Approved drawing be obtained from the client prior to any production release or production release revision.

Approved Approved as Noted Revise & Resubmit

Name _____

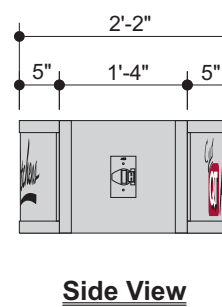
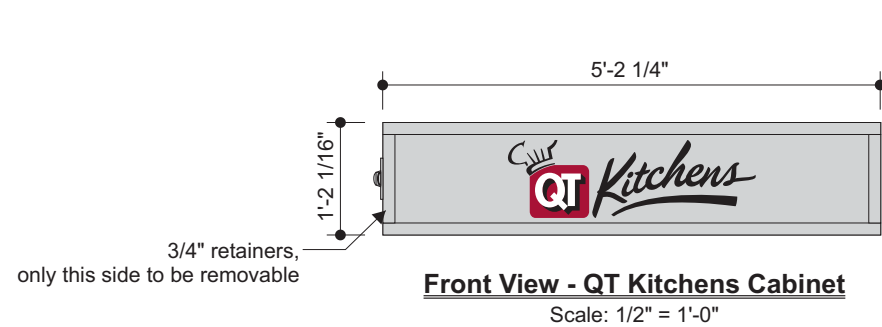
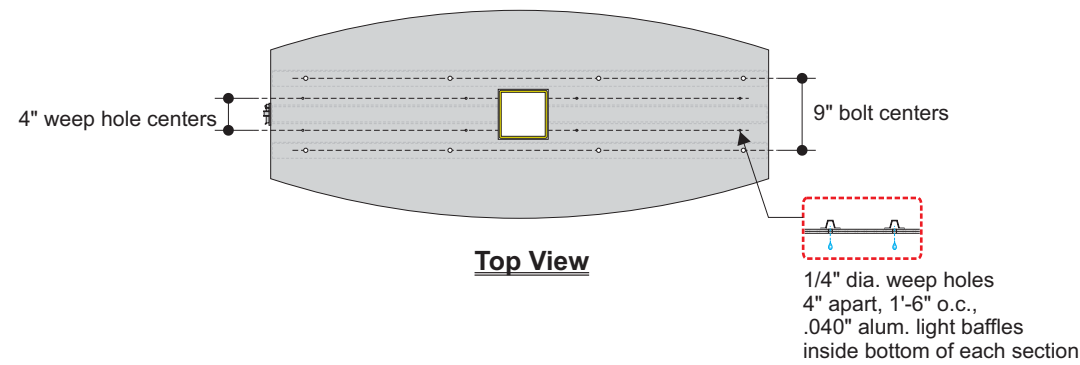
Title _____ Date _____

Declaration

Copyright © 2020 Allen Industries, Inc.

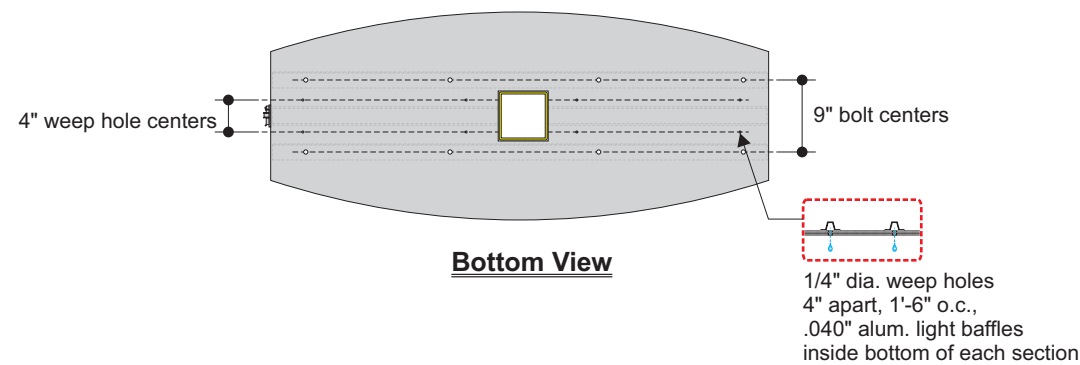
This is an original, unpublished drawing, created by Allen Industries, Inc. This drawing is submitted to you in confidence for your use solely in connection with the project being planned for you by Allen Industries, Inc. and is not to be shown to anyone outside your organization, nor used, reproduced, copied or exhibited in any fashion whatsoever. The designs shown on the drawing (except for any registered trademarks that may belong to a client of Allen Industries, Inc.) remain the property of Allen Industries, Inc.

Allen Industries
YOUR BRAND AT ITS BEST™
1-800-967-2553
www.allenindustries.com



All Sign Modules constructed with removable alum. face retainers and clear acrylic, .177" thickness, face panels with 2nd surface painted background colors and graphics.

Note: No Embossment



Color Specifications

All Paint Finishes to be Akzo Nobel

- Opaque Silver
- Translucent White
- 3M Day/Night Vinyl #3635-0171
- Matte White (Interior of Sign)
- 3M Cardinal Red #3632-53 Translucent Vinyl

Regarding Fabrication Fit & Finish of All QT Signs:

- Visible fabrication seams and welded joints are to be sanded smooth, filled and finished to QT specifications.
- Any visible fasteners are to be countersunk and have painted heads.
- Face retainers must fit flush and have even, minimal seams.
- Any variation from this directive must be brought to the attention of the QT Quality Control Manager without delay.

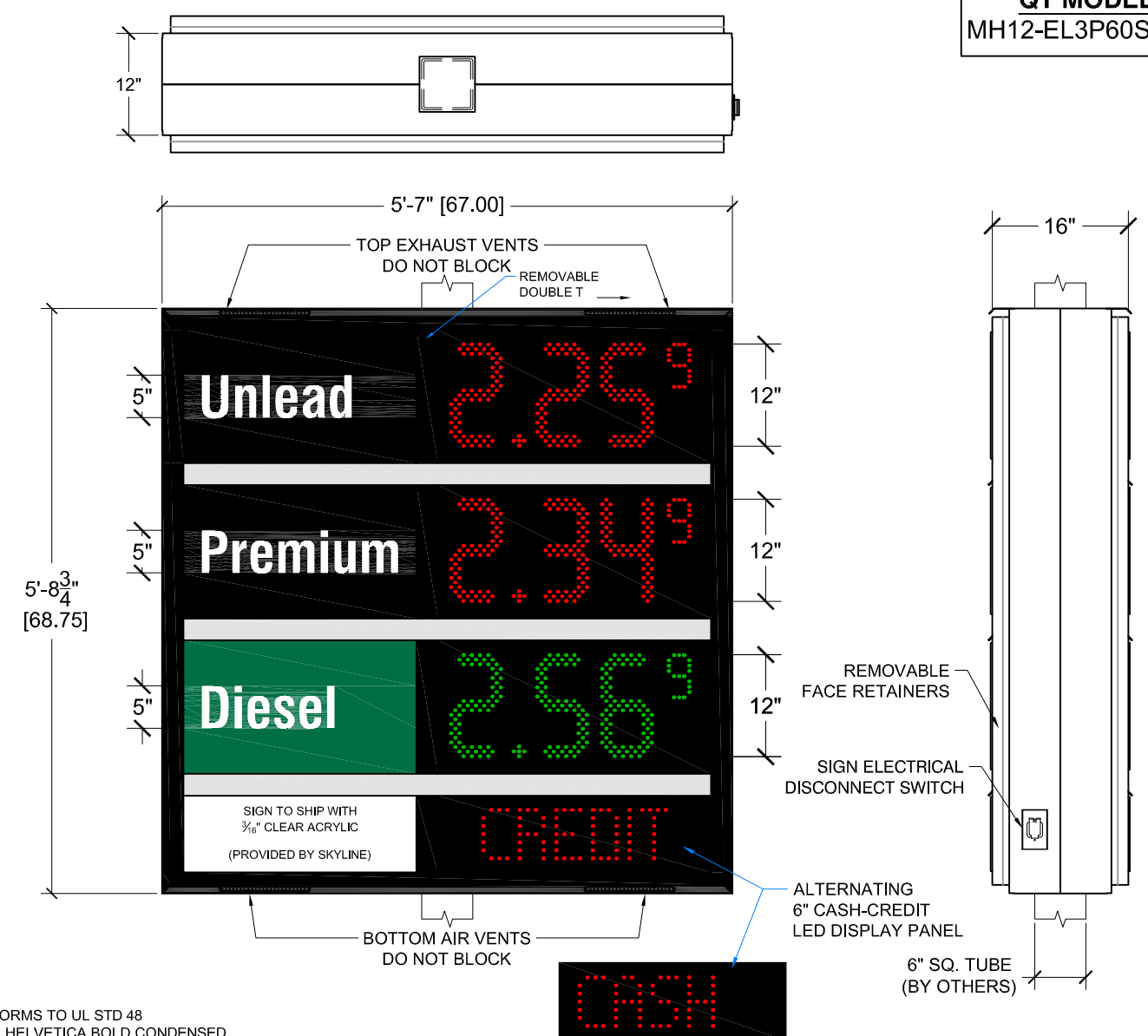
FILE NUMBER: E212503

Listed Electric Sign Complies with
UL48
CSA C22.2 No.207
E212503 **A11 017510**

THIS SIGN IS INTENDED TO BE INSTALLED IN ACCORDANCE WITH THE REQUIREMENTS OF ARTICLE 600 OF THE NATIONAL ELECTRICAL CODE AND/OR OTHER APPLICABLE LOCAL CODES. THIS INCLUDES PROPER GROUNDING AND BONDING OF THE SIGN.

"SIGN SPECIFICATION & CUT-SHEET"

QT MODEL:
MH12-EL3P60SF-CC



NOTES:

- CONFORMS TO UL STD 48
- FONT: HELVETICA BOLD CONDENSED
- STANDARD COLORS SHOWN, CUSTOM COLORS AVAILABLE UPON REQUEST
- STANDARD CABINET PAINTED BLACK TO MATCH: AKZO-NOBEL, BLACK - LOW GLOSS 2 PART POLYURETHANE; DIVIDER FINISH PAINTED SILVER TO MATCH: AKZO NOBEL, SILVER - LOW GLOSS 2 PART POLYURETHANE
- ACTUAL POLE SIZE MAY DETERMINE SIGN DEPTH PLEASE SPECIFY ANY SPECIAL MOUNTING REQUIREMENTS.
- FACE VINYL TO BE APPLIED ON INSIDE SURFACE (2nd SURFACE)**
- ALL PANELS TO BE 3/16" CLEAR ACRYLIC
- COMMODITY BACKGROUND TO BE TRANSLUCENT WITH TRANSLUCENT COPY
- PRICE AREA BACKGROUND TO BE OPAQUE WITH LED COPY
- BLANK LOGO PANEL:
 - CUT SIZE: 29.50" x 11.50"
 - VISIBLE OPENING: 27.375" x 9.00"
 - SIGN TO SHIP WITH 3/16" CLEAR ACRYLIC (PROVIDED BY SKYLINE)
 - ANY ADDITIONAL OR ALTERNATE ARTWORK OR LOGO TO BE PROVIDED BY OTHERS
- INTERIOR ILLUMINATION:**
LED BACKLIGHTING
- ELECTRICAL REQUIREMENTS:**
Input Voltage: 120 VAC
Control 24/7 = 3.5 Amps
Lighting = 2 Amps

**- THRU POLE MOUNTING ONLY -
(MOUNTING STRUCTURE & SUPPORT BY OTHERS)**

COLORS	REVISIONS	CUSTOMER REVIEW STATUS	THE INTENT OF THE DRAWING IS TO SHOW A CONCEPTUAL REPRESENTATION OF THE PROPOSED SIGNAGE. THE FINISHED SIGN MAY DIFFER SLIGHTLY FROM DRAWING.
<ul style="list-style-type: none"> ● BLACK, 3M 3632-22 ● GREEN, 3M 3632-26 ● LED DIGIT, RED ● LED DIGIT, GREEN 	1: 2: 3: 4: 5:	SKYLINE PRODUCTS, INC. REQUIRES THAT AN "APPROVED" DRAWING BE OBTAINED FROM THE CUSTOMER PRIOR TO ANY PRODUCTION RELEASE OR PRODUCTION RELEASE REVISION. <input type="checkbox"/> APPROVED <input type="checkbox"/> REVISE & RE-SUBMIT NAME: _____ DATE: _____	DRAWING NUMBER: QUIK0013-102319-61B MODEL NUMBER: PLE2-12-3P2F-329-SSBP-2CC SIGN TOLERANCES: +1/8 -1/2"

All Installation details are suggested only. All Signs must be installed in accordance with NATIONAL, STATE ELECTRICAL, AND BUILDING CODES. Unless specifically contracted for Skyline Products, Inc. shall have no responsibility for wind loads, installations, or electrical circuits. These are the sole responsibility of the buyer/user.

SKYLINE PRODUCTS

TITLE: GEN II LED, FUEL PRICE DISPLAY ALTERNATING CASH+CREDIT + PRICE

REV. SPI #:

2903 DELTA DRIVE
COLORADO SPRINGS,
CO. 80910-1012
719-592-9046
800-759-9046

CUSTOMER: QUIKTRIP

ADDRESS: _____ STORE #: _____

SALESPERSON: COMPANY SALES ORDER#: _____

DATE: 10/23/19 DRAWN BY: KRC SIGN AREA: 31.99 sq ft

Skyline Pricer



Item #QT-MH-E3PGQ-CC-62

Project Information

Client: QuikTrip
Location: Various

File: QT-MH-E3PGQ-CC-62

Sales: House Design: CT Project Manager: James Gentry

Date / Description

Date	Issue Date
01/17/20	
1	
2	
3	
4	
5	
6	
7	
8	
9	

Notes

-

Client Review Status

Allen Industries, Inc. requires that an "Approved" drawing be obtained from the client prior to any production release or production release revision.

Approved Approved as Noted Revise & Resubmit

Name: _____

Title: _____ Date: _____

Declaration

Copyright © 2020 Allen Industries, Inc.
This is an original, unpublished drawing, created by Allen Industries, Inc. This drawing is submitted to you in confidence for your use solely in connection with the project being planned for you by Allen Industries, Inc. and is not to be shown to anyone outside your organization, nor used, reproduced, copied or exhibited in any fashion whatsoever. The designs shown on the drawing (except for any registered trademarks that may belong to a client of Allen Industries, Inc.) remain the property of Allen Industries, Inc.



1-800-967-2553
www.allenindustries.com

GG Insert



Item #QT-MH-E3PGQ-CC-62

Project Information

Client
QuikTrip

Location
Various

File
QT-MH-E3PGQ-CC-62

Sales House	Design CT	Project Manager James Gentry
-----------------------	---------------------	--

Date / Description

Date	Issue Date
01/17/20	
1	
2	
3	
4	
5	
6	
7	
8	
9	

Notes

-

Client Review Status

Allen Industries, Inc. requires that an Approved drawing be obtained from the client prior to any production release or production release revision.

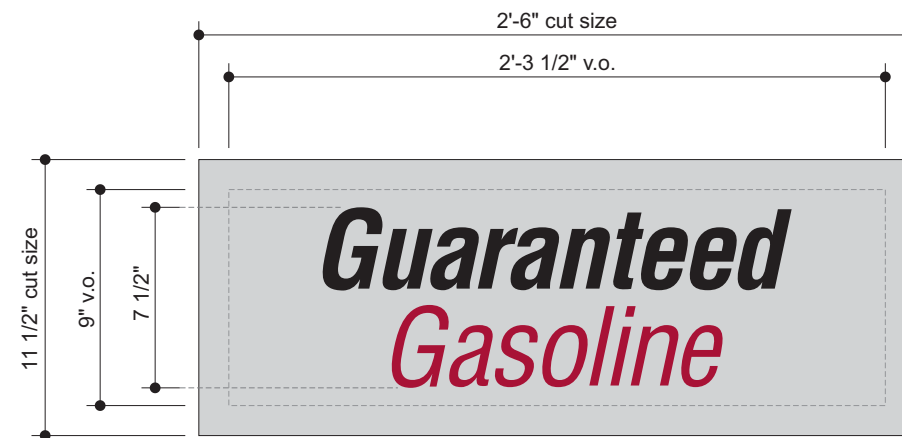
Approved Approved as Noted Revise & Resubmit

Name _____

Title _____ Date _____

Declaration

Copyright © 2020 Allen Industries, Inc.
 This is an original, unpublished drawing, created by Allen Industries, Inc. This drawing is submitted to you in confidence for your use solely in connection with the project being planned for you by Allen Industries, Inc. and is not to be shown to anyone outside your organization, nor used, reproduced, copied or exhibited in any fashion whatsoever. The designs shown on the drawing (except for any registered trademarks that may belong to a client of Allen Industries, Inc.) remain the property of Allen Industries, Inc.



.177" thick clear acrylic face panels with 2nd surface painted background colors and graphics.

Front View - GG Insert
Scale: 1/8" = 1"


Color Specifications

All Paint Finishes to be Akzo Nobel

-  Opaque Silver
-  Translucent White
-  3M Day/Night Vinyl #3635-0171
-  Matte White (Interior of Sign)
-  3M Cardinal Red #3632-53 Translucent Vinyl

Regarding Fabrication Fit & Finish of All QT Signs:

- Visible fabrication seams and welded joints are to be sanded smooth, filled and finished to QT specifications.
- Any visible fasteners are to be countersunk and have painted heads.
- Face retainers must fit flush and have even, minimal seams.
- Any variation from this directive must be brought to the attention of the QT Quality Control Manager without delay.

 FILE NUMBER: E212503	Listed Electric Sign Complies with UL48 CSA C22.2 No. 207 MET E212503 A11 017510	
	THIS SIGN IS INTENDED TO BE INSTALLED IN ACCORDANCE WITH THE REQUIREMENTS OF ARTICLE 600 OF THE NATIONAL ELECTRICAL CODE AND/OR OTHER APPLICABLE LOCAL CODES. THIS INCLUDES PROPER GROUNDING AND BONDING OF THE SIGN.	

Allen Industries
YOUR BRAND AT ITS BEST™

1-800-967-2553
www.allenindustries.com

Monument Base



Item #QT-MH-E3PGQ-CC-62

Project Information

Client: QuikTrip
 Location: Various

File: QT-MH-E3PGQ-CC-62

Sales: House Design: CT Project Manager: James Gentry

Date / Description

Date	Description
01/17/20	Issue Date
2	
3	
4	
5	
6	
7	
8	
9	

Notes

-

Client Review Status

Allen Industries, Inc. requires that an Approved drawing be obtained from the client prior to any production release or production release revision.

Approved Approved as Noted Revise & Resubmit

Name: _____

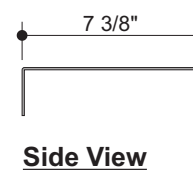
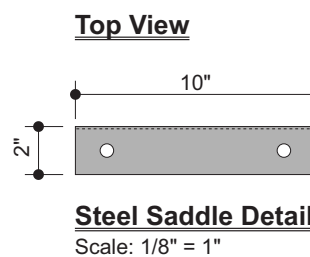
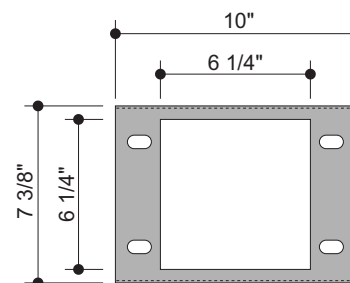
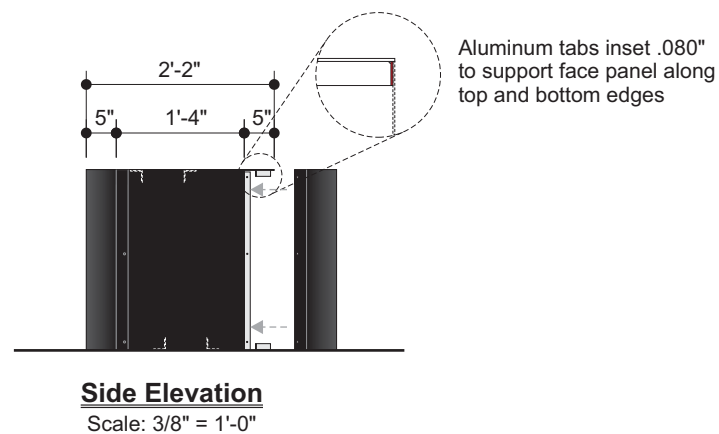
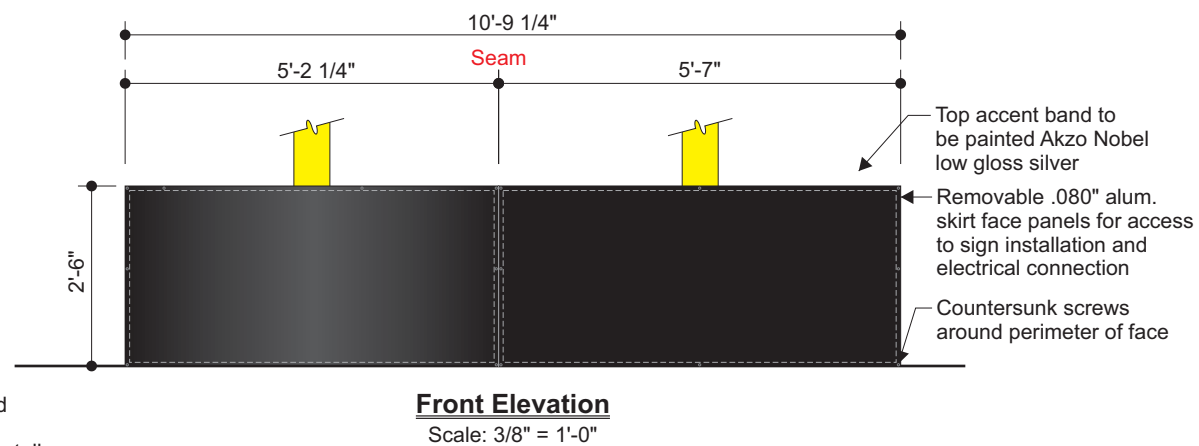
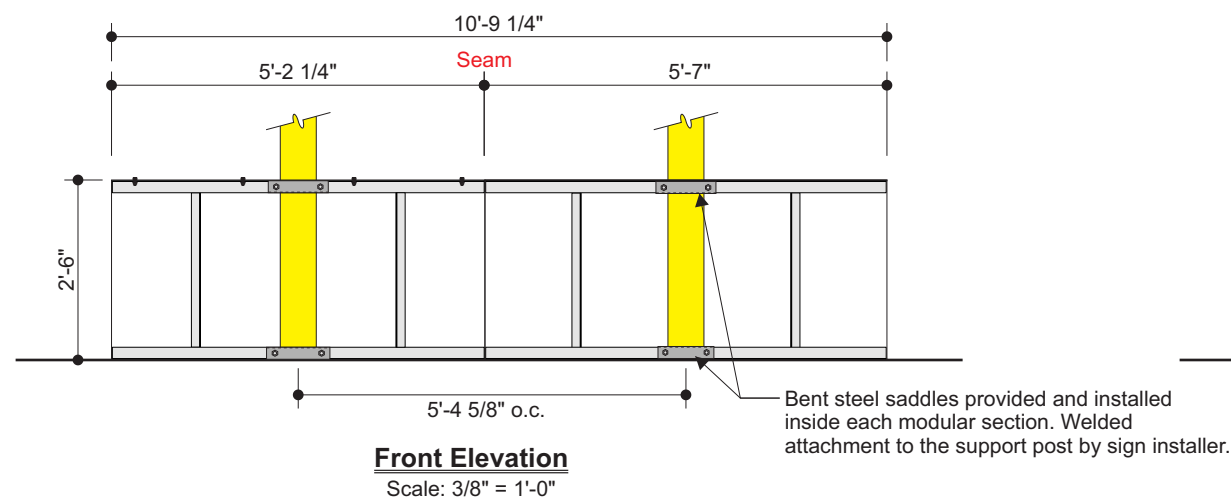
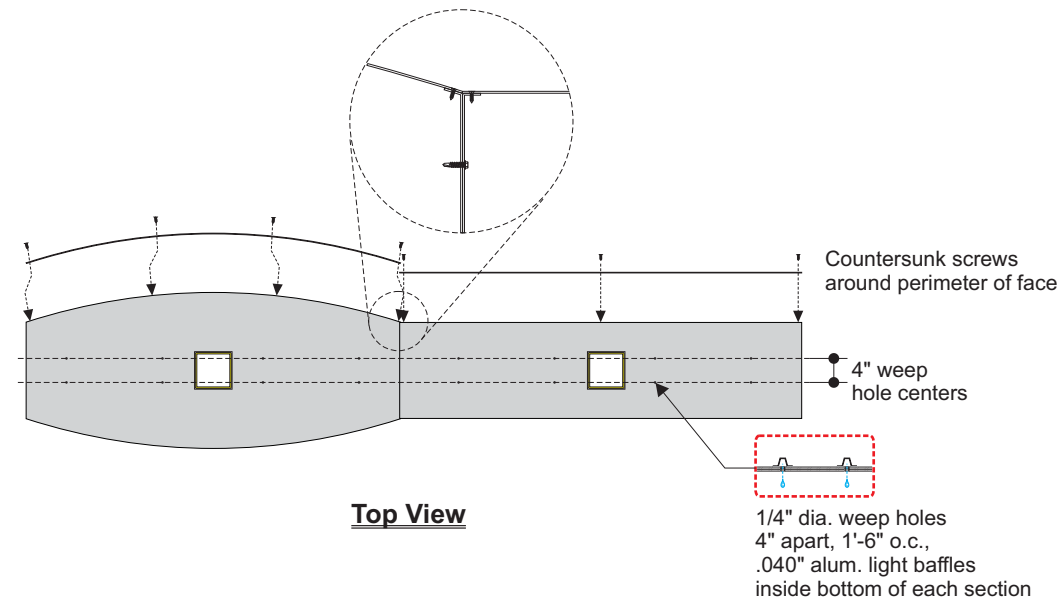
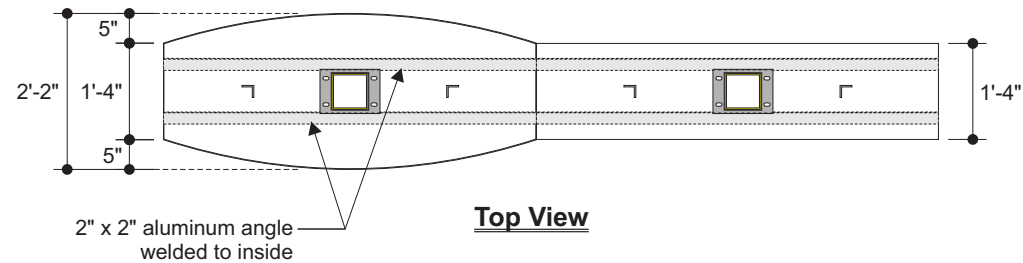
Title: _____ Date: _____

Declaration

Copyright © 2020 Allen Industries, Inc.

This is an original, unpublished drawing, created by Allen Industries, Inc. This drawing is submitted to you in confidence for your use solely in connection with the project being planned for you by Allen Industries, Inc. and is not to be shown to anyone outside your organization, nor used, reproduced, copied or exhibited in any fashion whatsoever. The designs shown on the drawing (except for any registered trademarks that may belong to a client of Allen Industries, Inc.) remain the property of Allen Industries, Inc.

Allen Industries
 YOUR BRAND AT ITS BEST™
1-800-967-2553
www.allenindustries.com



YELLOW INDICATES THE STEEL SUPPORT PROVIDED BY SIGN INSTALLER

Color Specifications

All Paint Finishes to be Akzo Nobel

Opaque Silver

Black - Low Gloss

Regarding Fabrication Fit & Finish of All QT Signs:

- Visible fabrication seams and welded joints are to be sanded smooth, filled and finished to QT specifications.
- Any visible fasteners are to be countersunk and have painted heads.
- Face retainers must fit flush and have even, minimal seams.
- Any variation from this directive must be brought to the attention of the QT Quality Control Manager without delay.