

FRONT ELEVATION



LEFT ELEVATION



REAR ELEVATION



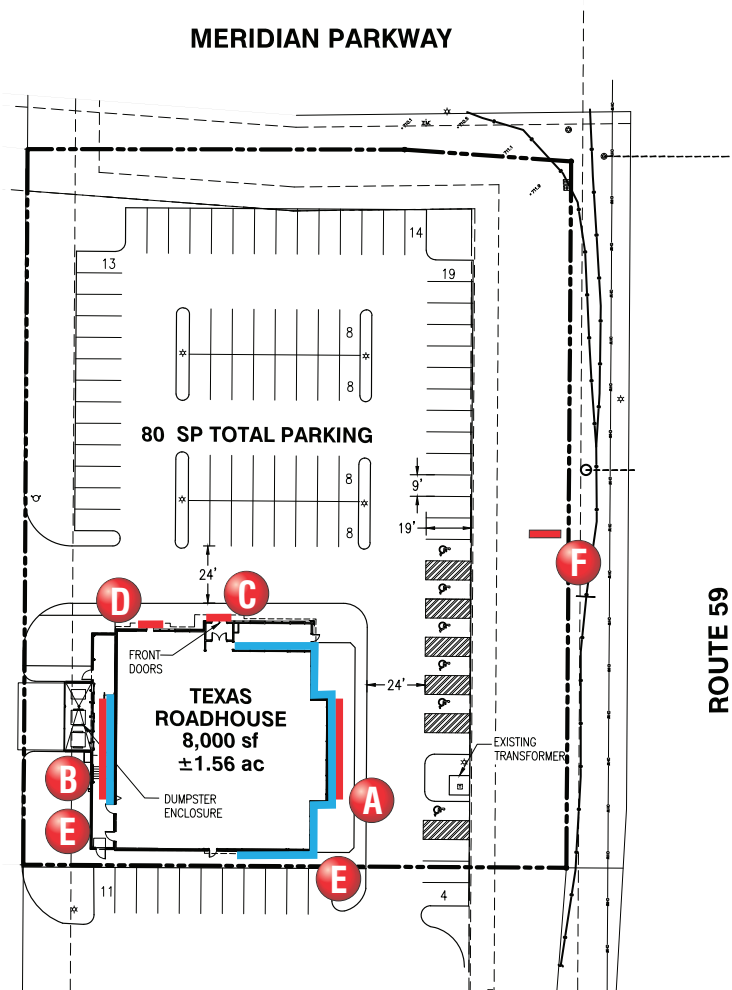
RIGHT ELEVATION

EXTERIOR FINISH SCHEDULE	
FIBER CEMENT BOARD SIDING & TRIM	WOODTONE RUSTIC SERIES LAP ON ALLURA SIDING, COLOR "SUMMER WHEAT"
HIGH DENSITY POLYURETHANE SHUTTERS	PAINT #4: SHERWIN WILLIAMS PAINTS, CUSTOM COLOR TO MATCH SIDING
FRONT ENTRANCE DOORS	METAL DOORS (FAUX WOOD) CECO DOORS, MADERA ("NUTMEG" FINISH)
CEDAR FASCIA TRIM, FIBER CEMENT BOARD TRIM, METAL FLASHING & GUTTERS	PAINT #1: SHERWIN WILLIAMS PAINTS, GREEN
DOWNSPOUTS & SPLIT-FACE CMU	PAINT #2: SHERWIN WILLIAMS PAINTS, #2195 "ROADSIDE" FINISH COLOR TO MATCH SIDING
METAL DOORS & FRAMES, DUMPSTER GATES & BOLLARDS	PAINT #3: SHERWIN WILLIAMS PAINTS, GLOSS BLACK
BRICK VENEER	GENERAL SHALE PHOENIX C652
BRICK VENEER (ALTERNATE)	COMMERCIAL BRICK CORPORATION "HOMESTEAD"
METAL ROOF	METAL SALES 5V-CRIMP, GALVALUME

DISCLAIMER NOTE:
THE COLORS DEPICTED ON THESE ELEVATIONS ARE FOR GRAPHIC REPRESENTATION PURPOSES ONLY.
PLEASE REFER TO MATERIAL BOARD FOR ACTUAL SAMPLE OF COLORS AND TEXTURES



MERIDIAN PARKWAY



SIGN PLACEMENT

SIGN TYPE A 3'-0" LED Channel Letterset w/ 7' logo.

SIGN TYPE B 3'-0" LED Channel Letterset w/ 7' logo.

SIGN TYPE C 3'3" x 5'7" S/F LED Wall Sign.

SIGN TYPE D 2'1" x 3'10" S/F LED Wall Sign.

LED E White LED Border Lighting w/ Light Shield.

SIGN TYPE F D/F LED Monument Sign on Existing Base.



GreenbergFarrow

DATE: JANUARY 27, 2021

GF PROJECT #: 20200881.0

SITE SKETCH 5 - 8,000 sf

TEXAS ROADHOUSE - AURORA, IL
SWQ MERIDIAN PARKWAY AND ROUTE 59

PARKING: REQUIRED TBV SPACES PROVIDED 80 SPACES



SIGN COMPANY
www.FederalHeath.com

160 W. Carmel Drive, Suite 236 Carmel, IN 46032
(317) 581-7790 Fax (317) 581-7783

Manufacturing Facilities:
Oceanside - Euless - Jacksonville - Columbus
Office Locations:
Oceanside - Las Vegas - Laughlin - Idaho Falls
Euless - Jacksonville - Houston - San Antonio
Corpus Christi - Grafton - Milwaukee
Willowbrook - Louisville - Indianapolis - Columbus
Cincinnati - Westerville - Knoxville - Tunica
Atlanta - Tampa - Daytona Beach - Winter Park

Building Quality Signage Since 1901

Revisions:

R1: Updated monument sign base and changed all to LED.

R2: Updated elevations.

Colors Depicted In This Rendering May Not Match Actual Finished Materials. Refer To Product Samples For Exact Color Match

Client Approval/Date:

Landlord Approval/Date:

Account Rep: Randy Cearlock

Project Manager: S. Maeser

Drawn By: K. Singleton

Underwriters Laboratories Inc. ELECTRICAL TO USE U.L.-48 LISTED COMPONENTS AND SHALL MEET ALL I.E.C. STANDARDS

Project / Location:

SWQ MERIDIAN PKWY & RT 59
AURORA, IL
(NAPERVILLE RELOCATION)

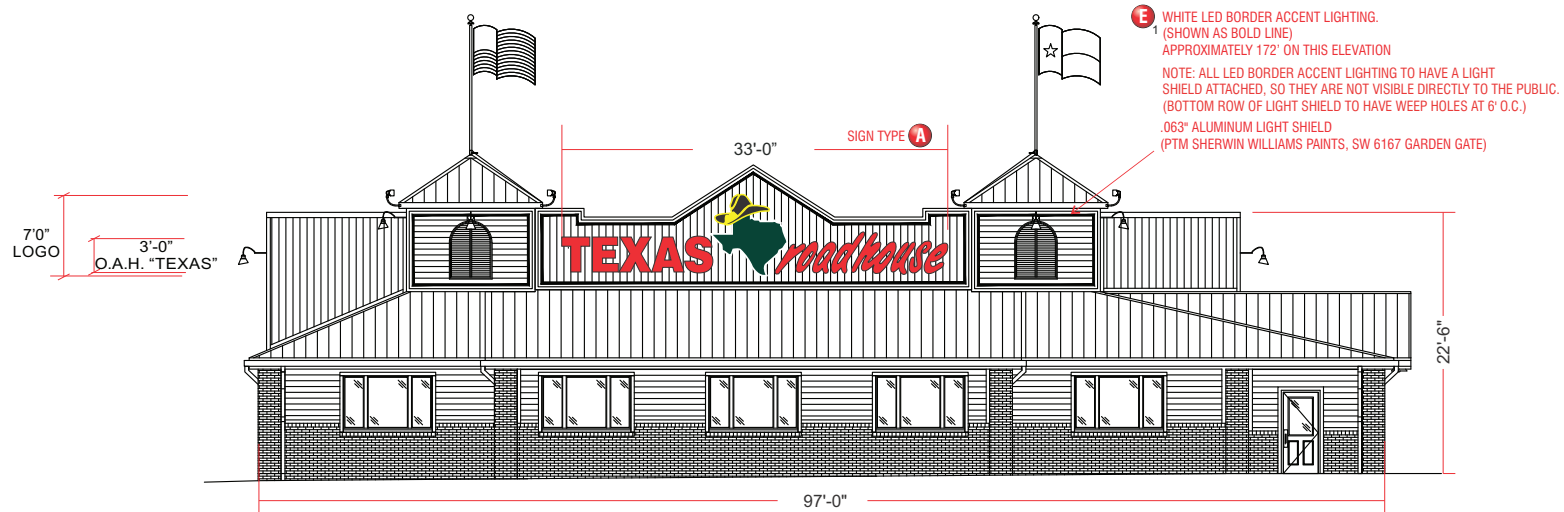
Job Number: 23-64377-10

Date: April 14, 2021

Sheet Number: 1 Of 9

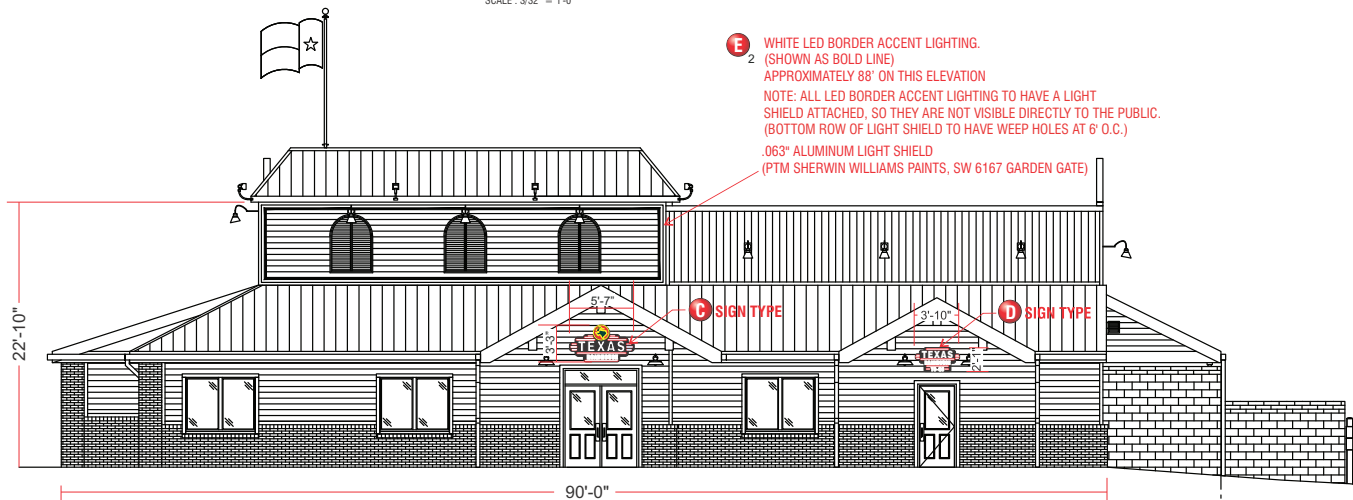
Design Number: 23-64377-10R2

This original drawing is provided as part of a planned project and is not to be exhibited, copied or reproduced without the written permission of Federal Heath Sign Company, LLC or its authorized agent. © 2008



FRONT ELEVATION

SCALE : 3/32" = 1'-0"



RIGHT ELEVATION

SCALE : 3/32" = 1'-0"



SIGN COMPANY
www.FederalHeath.com

160 W. Carmel Drive, Suite 236 Carmel, IN 46032
(317) 581-7790 Fax (317) 581-7783

Manufacturing Facilities:
Oceanside - Euless - Jacksonville - Columbus
Office Locations:
Oceanside - Las Vegas - Laughlin - Idaho Falls
Euless - Jacksonville - Houston - San Antonio
Corpus Christi - Grafton - Milwaukee
Willowbrook - Louisville - Indianapolis - Columbus
Cincinnati - Westerville - Knoxville - Tunica
Atlanta - Tampa - Daytona Beach - Winter Park
Building Quality Signage Since 1901

Revisions:

- R1: Updated monument sign base and changed all to LED.
R2: Updated elevations.

Colors Depicted In This Rendering May Not Match Actual Finished Materials. Refer To Product Samples For Exact Color Match

Client Approval/Date:

Landlord Approval/Date:

Account Rep: Randy Cearlock

Project Manager: S. Maeser

Drawn By: K. Singleton

Underwriters Laboratories Inc. ELECTRICAL TO USE U.L.-48 LISTED COMPONENTS AND SHALL MEET ALL N.E.C. STANDARDS

Project / Location:

**SWQ MERIDIAN PKWY & RT 59
AURORA, IL
(NAPERVILLE RELOCATION)**

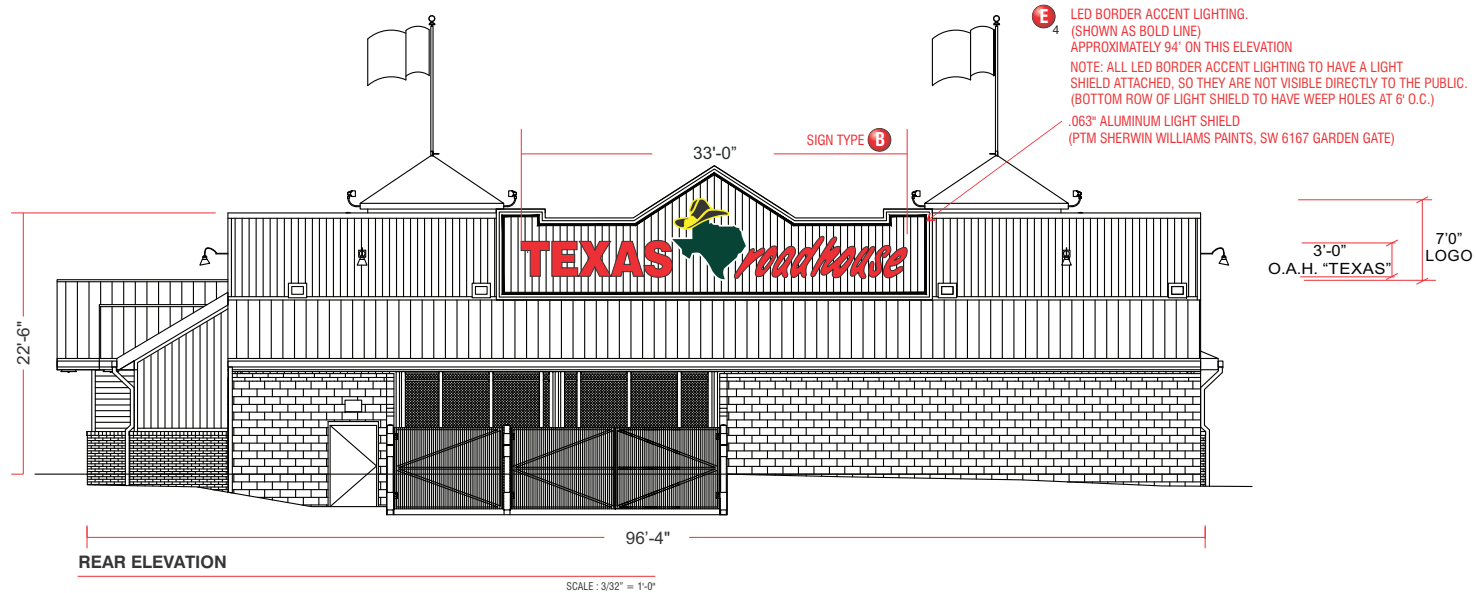
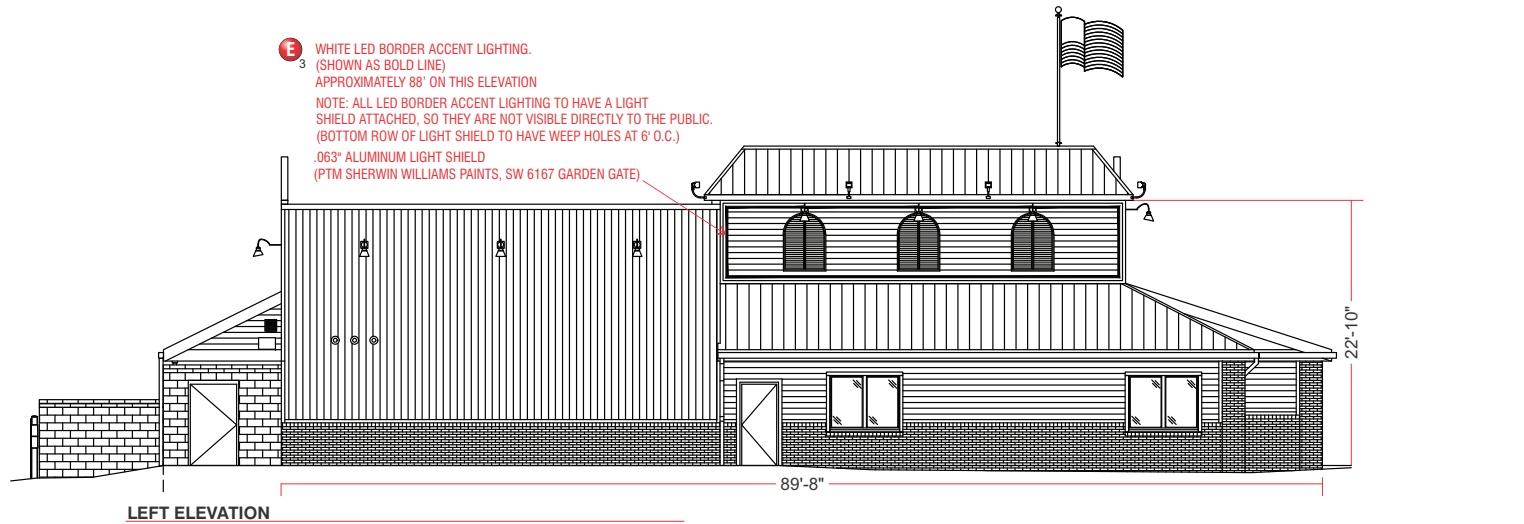
Job Number: **23-64377-10**

Date: **April 14, 2021**

Sheet Number: **2** Of **9**

Design Number: **23-64377-10R2**

This original drawing is provided as part of a planned project and is not to be exhibited, copied or reproduced without the written permission of Federal Heath Sign Company, LLC or its authorized agent. © 2008



160 W. Carmel Drive, Suite 236 Carmel, IN 46032
(317) 581-7790 Fax (317) 581-7783

Manufacturing Facilities:
Oceanside - Euless - Jacksonville - Columbus
Office Locations:
Oceanside - Las Vegas - Laughlin - Idaho Falls
Euless - Jacksonville - Houston - San Antonio
Corpus Christi - Grafton - Milwaukee
Wilkesboro - Louisville - Indianapolis - Columbus
Cincinnati - Westerville - Knoxville - Tunica
Atlanta - Tampa - Daytona Beach - Winter Park
Building Quality Signage Since 1901

Revisions:
R1: Updated monument sign base and changed all to LED.
R2: Updated elevations.
Colors Depicted In This Rendering May Not Match Actual Finished Materials. Refer To Product Samples For Exact Color Match
Client Approval/Date: _____
Landlord Approval/Date: _____

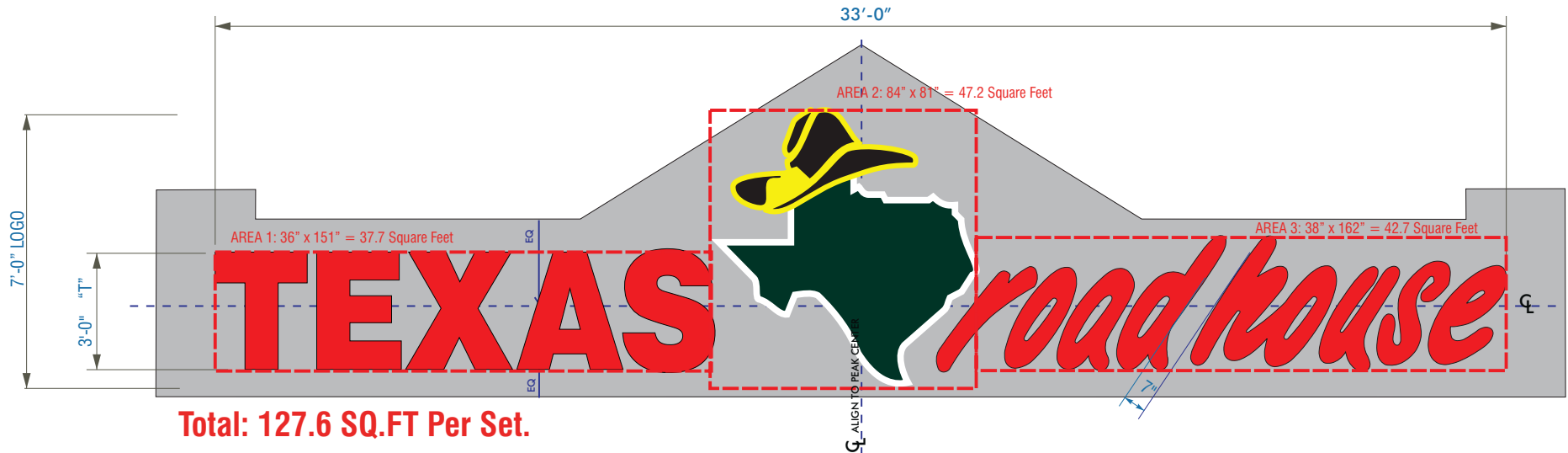
Account Rep: Randy Cearlock
Project Manager: S. Maeser
Drawn By: K. Singleton
UL Underwriters Laboratories Inc. ncc ELECTRICAL TO USE U.L.-48 LISTED COMPONENTS AND SHALL MEET ALL N.E.C. STANDARDS

Project / Location:

SWQ MERIDIAN PKWY & RT 59
AURORA, IL
(NAPERVILLE RELOCATION)

Job Number: 23-64377-10
Date: April 14, 2021
Sheet Number: 3 Of 9
Design Number: 23-64377-10R2

This original drawing is provided as part of a planned project and is not to be exhibited, copied or reproduced without the written permission of Federal Heath Sign Company, LLC or its authorized agent. © 2008



SIGN TYPES **A** and **B** Individual Plex Faced LED Illuminated Channel Letters- Two (2) Sets Req'd.

SCOPE OF WORK:

Manufacture and install Plex Faced, LED Illuminated channel letters having remote power supplies located in accessible area behind wall.

SCALE: 3/8" = 1'-0"

INSTALLER IS RESPONSIBLE FOR:

PROVIDING AND INSTALLING ALL COMPONENTS REQUIRED TO RUN SECONDARY WIRING (CONNECTORS, GTO CONDUIT, ETC.) TO BE DETERMINED BY LOCAL CODE AND SITE CONDITIONS.
PROVIDING ALL NEEDED INSTALLATION HARDWARE AS DETERMINED BY LOCAL CODE AND SITE CONDITIONS.

ELECTRICAL REQUIREMENTS

Total: 6 Amps per set

(1) 120V 20A Circuit Required.

ALL BRANCH CIRCUITS SHALL BE DEDICATED TO SIGNS (INCLUDING GROUND AND NEUTRAL) AND SHALL NOT BE SHARED WITH OTHER LOADS.

MATERIAL FINISH COLORS

AKZO 108-D5 Gloss Red	#2283 Red Acrylic	Red	#7328 White Acrylic 'Hat & State'	AKZO Gloss White	2500-76 Holly Green Vinyl Applied to White Acrylic Face Leaving White Outline.	Match PMS-122	2500-15 Yellow Vinyl Applied to White Acrylic.	2500-22 Black Vinyl Applied to Yellow Vinyl Leaving "Hat" Detail.
Letter Returns	Letter Face	Letter Trim Cap	Logo: Face	Logo: "State" Return & Retainer.	Logo: "State"	Logo: "Hat" Return & Retainer	Logo: "Hat"	Logo: "Hat"

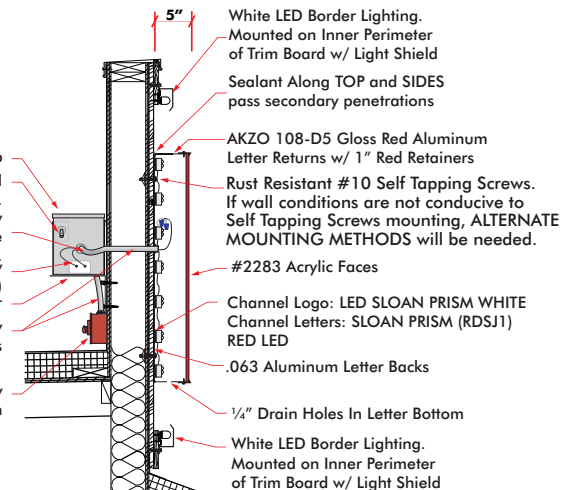
CUSTOMER TO PROVIDE:

ALL BRANCH (PRIMARY ELECTRICAL SERVICE) CIRCUITS & FINAL CONNECTION TO EACH SIGN (WITHIN 5 FT.) TO BE BY CERTIFIED ELECTRICIAN:
A. All branch circuits for signs must be totally dedicated to signs (including dedicated ground and dedicated neutral per circuit).
B. Sign circuits must not be shared with other loads such as lighting, air conditioning, and other equipment.
C. Properly sized ground wire that can be traced back to the breaker panel must be provided.
D. Number and size of circuits for each sign to meet Federal Health Sign's requirement.
Any deviation from the above recommendations may result in:
1. Damage to or improper operation of the sign(s).
2. Delays and additional costs.

Notes:
- Certain electrical components of signs will fail prematurely if signs are not shut-off for a period of time, once, each day. For best performance, we recommend signs to be connected to an automatic controlling device such as an Energy Management System, Time Clock or Photo Cell that will automatically shut-off the sign for a period of time, each day. Failure to do so will cause damage to the electrical components of the sign and will void the warranty.
- Some dimming devices will also adversely affect sign electrical components, causing failure. Any dimming of the sign without consultation with Federal Health Sign Co. will void the warranty.

Transformer Box Mounted with Lid on Top
120Volt-20 Amp Disconnect Switch Mounted on End of each Transformer Box.
14 AWL Wire From Power Supply To LED Connector Inside Each Letter.
120 VAC/12VDC Power Supply (Mount In Transformer Box)
Transformer Box Mounting Brackets by Installer
Metallic Seal-Tite In Wall For Supply and Primary Leads

J-Box and Primary Disconnect by GC's Electrician



LED LOW VOLTAGE LIGHTING SYSTEM
U.L. RECOGNIZED - CLASS 2 - CONFORMS TO U.L. 48



SIGN COMPANY
www.FederalHealth.com

160 W. Carmel Drive, Suite 236 Carmel, IN 46032
(317) 581-7790 Fax (317) 581-7783

Manufacturing Facilities:
Oceanside - Euless - Jacksonville - Columbus
Office Locations:
Oceanside - Las Vegas - Laughlin - Idaho Falls
Euless - Jacksonville - Houston - San Antonio
Corpus Christi - Grafton - Milwaukee
Wilkesboro - Louisville - Indianapolis - Columbus
Cincinnati - Westerville - Knoxville - Tunica
Atlanta - Tampa - Daytona Beach - Winter Park
Building Quality Signage Since 1901

Revisions:

R1: Updated monument sign base and changed all to LED.

R2: Updated elevations.

Colors Depicted In This Rendering May Not Match Actual Finished Materials. Refer To Product Samples For Exact Color Match

Client Approval/Date: _____

Landlord Approval/Date: _____

Account Rep: **Randy Cearlock**

Project Manager: **S. Maeser**

Drawn By: **K. Singleton**

Underwriters Laboratories Inc. ELECTRICAL TO USE U.L.-48 LISTED COMPONENTS AND SHALL MEET ALL N.E.C. STANDARDS

Project / Location:

TEXAS roadhouse
SWQ MERIDIAN PKWY & RT 59
AURORA, IL
(NAPERVILLE RELOCATION)

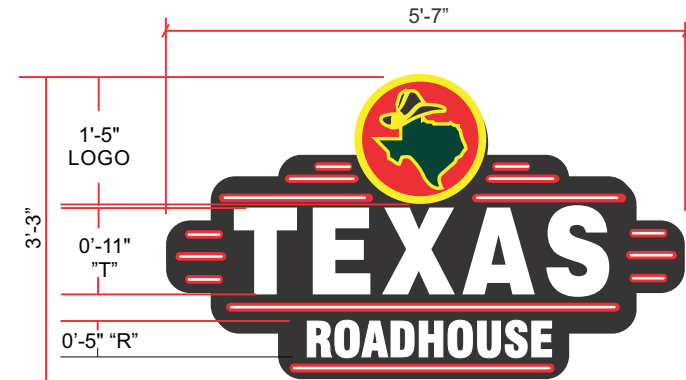
Job Number: **23-64377-10**

Date: **April 14, 2021**

Sheet Number: **4** Of **9**

Design Number: **23-64377-10R2**

This original drawing is provided as part of a planned project and is not to be exhibited, copied or reproduced without the written permission of Federal Health Sign Company, LLC or its authorized agent. © 2008



Single Face Illuminated Wall Sign One (1) Req'd

SCOPE OF WORK:
Manufacture and install S/F Internally illuminated wall sign.

Scale: 3/4" = 1'-0"

18.1 SQ.FT.

MATERIAL FINISH COLORS

AKZO Satin Black Cabinet and Face Bkgd	#7328 White Acrylic Copy, Logo and Stripes Bkgd	2150-43 Light Tomato Red Vinyl Logo Circle and Stripe Bkgd.
2500-76 Holly Green Vinyl Logo: "State"	2500-15 Yellow Vinyl Logo: Circle, Hat and State Border.	2500-22 Black Vinyl elements Applied to Yellow Bkgd. Logo: "Hat"

CUSTOMER TO PROVIDE:

(For New / Remodel Construction) ADEQUATE BEHIND THE WALL BACKING AND ACCESS AS REQUIRED TO INSTALL SIGNAGE. CUSTOMER TO FORWARD COPY OF FINAL APPROVED SIGNAGE DRAWINGS TO BUILDING SITE CONTACT SO THAT THESE PROVISIONS CAN BE MADE DURING CONSTRUCTION AND PRIOR TO SIGN INSTALLATION.

ALL BRANCH (PRIMARY ELECTRICAL SERVICE) CIRCUITS & FINAL CONNECTION TO EACH SIGN (WITHIN 5 FT.) TO BE BY CERTIFIED ELECTRICIAN.

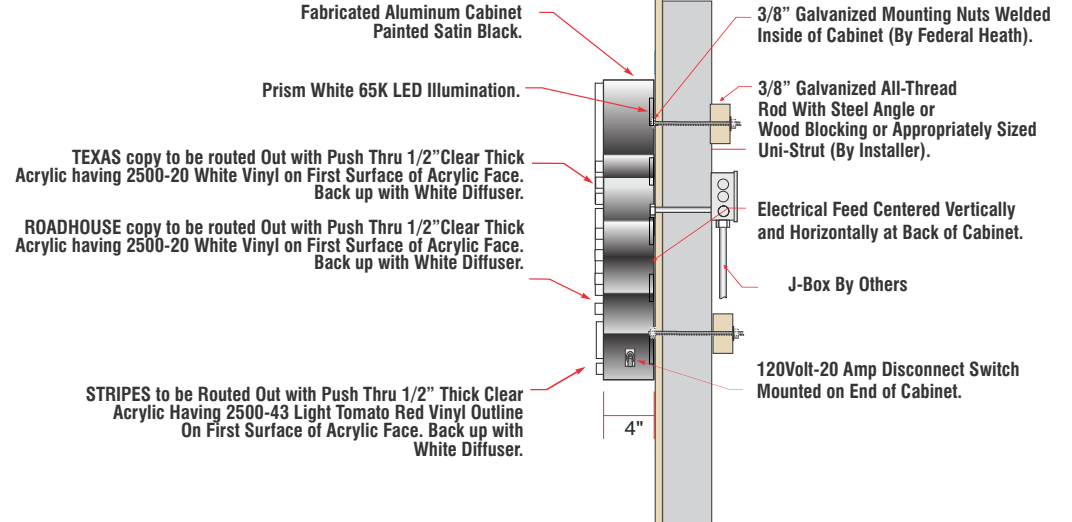
A. All branch circuits for signs must be totally dedicated to signs (including dedicated ground and dedicated neutral per circuit).
B. Sign circuits must not be shared with other loads such as lighting, air conditioning, and other equipment.
C. Properly sized ground wires that can be traced back to the breaker panel must be provided.
D. Number and size of circuits for each sign to meet Federal Health Sign's requirement.

Any deviation from the above recommendations may result in:
1. Damage to or improper operation of the sign(s).
2. Delay and additional costs.

Notes:
○ Certain electrical components of signs will fail prematurely if signs are not shut off for a period of time, once each day. For best performance, we recommend signs to be connected to an automatic controlling device such as an Energy Management System, Time Clock or Photo Cell that will automatically shut off the sign for a period of time, each day. Failure to do so will cause damage to the electrical components of the sign and will void the warranty.
○ Some dimming devices will also adversely affect sign electrical components, causing failure. Any dimming of the sign without consultation with Federal Health Sign Co. will void the warranty.

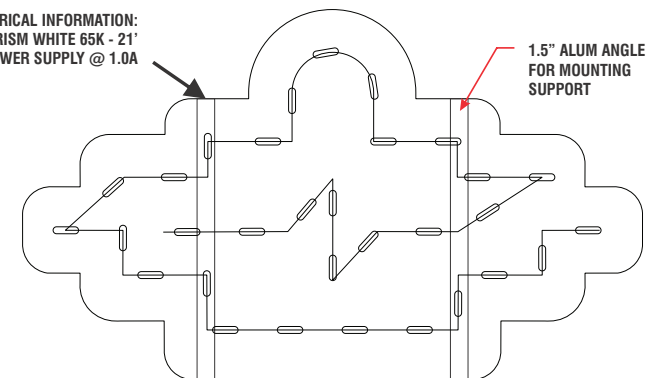
ELECTRICAL INFORMATION

(31) SLOAN PRISM WHITE 65K - 21'
(1) 60w POWER SUPPLY @ 1.0A
TOTAL AMP LOAD = 1.0
(1) 120v / 20A CIRCUIT REQUIRED



Typical Cabinet End View

ELECTRICAL INFORMATION:
(31) SLOAN PRISM WHITE 65K - 21'
(1) 60w POWER SUPPLY @ 1.0A



www.FederalHeath.com
160 W. Carmel Drive, Suite 236 Carmel, IN 46032
(317) 581-7790 Fax (317) 581-7783

Manufacturing Facilities:
Oceanside - Euless - Jacksonville - Columbus
Office Locations:
Oceanside - Las Vegas - Laughlin - Idaho Falls
Euless - Jacksonville - Houston - San Antonio
Corpus Christi - Grafton - Milwaukee
Willowbrook - Louisville - Indianapolis - Columbus
Cincinnati - Westerville - Knoxville - Tunica
Atlanta - Tampa - Daytona Beach - Winter Park
Building Quality Signage Since 1901

Revisions:

R1: Updated monument sign base and changed all to LED.
R2: Updated elevations.

Colors Depicted In This Rendering May Not Match Actual Finished Materials. Refer To Product Samples For Exact Color Match

Client Approval/Date:

Landlord Approval/Date:

Account Rep: Randy Cearlock

Project Manager: S. Maeser

Drawn By: K. Singleton

Underwriters Laboratories Inc.

ELECTRICAL TO USE U.L.-48 LISTED COMPONENTS AND SHALL MEET ALL NEC STANDARDS

Project / Location:

TEXAS
road house
SWQ MERIDIAN PKWY & RT 59
AURORA, IL
(NAPERVILLE RELOCATION)

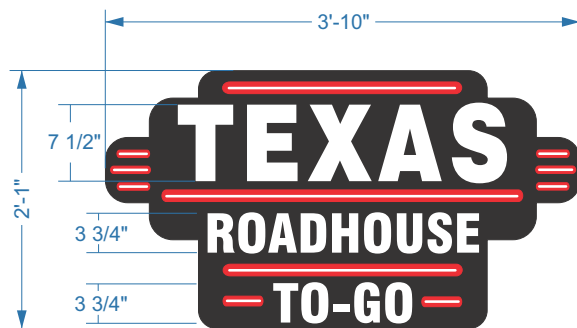
Job Number: 23-64377-10

Date: April 14, 2021

Sheet Number: 5 Of 9

Design Number: 23-64377-10R2

This original drawing is provided as part of a planned project and is not to be exhibited, copied or reproduced without the written permission of Federal Heath Sign Company, LLC or its authorized agent. © 2008



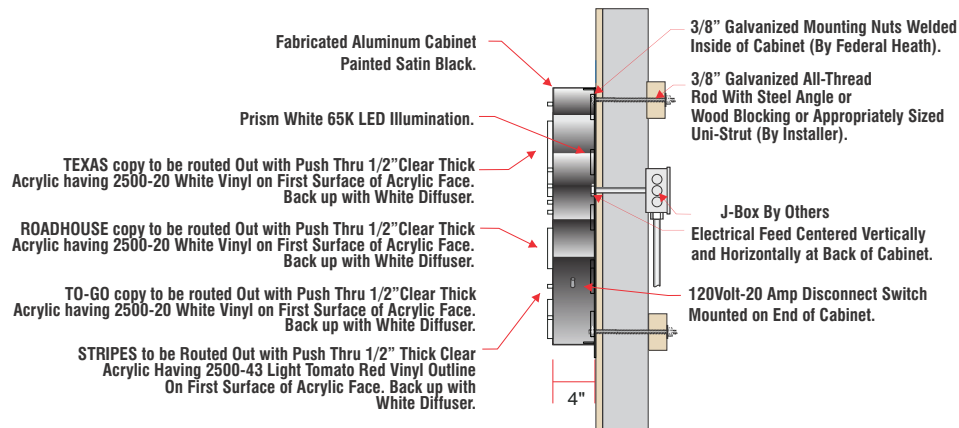
SIGN TYPE **D**

Single Face Illuminated Wall Sign One (1) Req'd **7.98 SQ.FT.**

SCOPE OF WORK:

Manufacture and install S/F Internally illuminated wall sign.

Scale: 1" = 1'-0"



Typical Cabinet End View

CUSTOMER TO PROVIDE:

(For New / Remodel Construction) ADEQUATE BEHIND THE WALL BACKING AND ACCESS AS REQUIRED TO INSTALL SIGNAGE. CUSTOMER TO FORWARD COPY OF FINAL APPROVED SIGNAGE DRAWINGS TO BUILDING SITE CONTACT SO THAT THESE PROVISIONS CAN BE MADE DURING CONSTRUCTION AND PRIOR TO SIGN INSTALLATION.

ALL BRANCH (PRIMARY ELECTRICAL SERVICE) CIRCUITS & FINAL CONNECTION TO EACH SIGN (WITHIN 5 FT.) TO BE BY CERTIFIED ELECTRICIAN:
A. All branch circuits for signs must be totally dedicated to signs (including dedicated ground and dedicated neutral per circuit).
B. Sign circuits must not be shared with other loads such as lighting, air conditioning, and other equipment.
C. Properly sized ground wire that can be traced back to the breaker panel must be provided.
D. Number and size of circuits for each sign to meet Federal Health Sign's requirement.

Any deviation from the above recommendations may result in:
1. Damage to or improper operation of the sign(s).
2. Delays and additional costs.

Notes: ⚠ Certain electrical components of signs will fail prematurely if signs are not shut-off for a period of time, once, each day. For best performance, we recommend signs to be connected to an automatic controlling device such as an Energy Management System, Time Clock or Photo Cell that will automatically shut-off the sign for a period of time, each day. Failure to do so will cause damage to the electrical components of the sign and will void the warranty.
⚠ Some dimming devices will also adversely affect sign electrical components, causing failure. Any dimming of the sign without consultation with Federal Health Sign Co. will void the warranty.

INSTALLER IS RESPONSIBLE FOR:

PROVIDING AND INSTALLING ALL COMPONENTS REQUIRED TO RUN SECONDARY WIRING (CONNECTORS, GTO CONDUIT, ETC.) TO BE DETERMINED BY LOCAL CODE AND SITE CONDITIONS.

PROVIDING ALL NEEDED INSTALLATION HARDWARE AS DETERMINED BY LOCAL CODE AND SITE CONDITIONS.

SEALING BUILDING PENETRATIONS WITH SILICONE TO PREVENT MOISTURE PENETRATION @ EXTERIOR LOCATIONS..

ELECTRICAL REQUIREMENTS

Total: 1.2 Amps

(1) 120V 20A Circuit Required.

ALL BRANCH CIRCUITS SHALL BE DEDICATED TO SIGNS (INCLUDING GROUND AND NEUTRAL) AND SHALL

MATERIAL FINISH COLORS

AKZO
Satin Black
Cabinet and
Face Bkgd

#7328
White Acrylic
Copy, Logo and Stripes
Bkgd

2150-43
Light Tomato
Red Vinyl
Stripe Bkgd.



SIGN COMPANY
www.FederalHeath.com

160 W. Carmel Drive, Suite 236 Carmel, IN 46032
(317) 581-7790 Fax (317) 581-7783

Manufacturing Facilities:
Oceanside - Eufess - Jacksonville - Columbus
Office Locations:
Oceanside - Las Vegas - Laughlin - Idaho Falls
Eufess - Jacksonville - Houston - San Antonio
Corpus Christi - Grafton - Milwaukee
Willowbrook - Louisville - Indianapolis - Columbus
Cincinnati - Westerville - Knoxville - Tunica
Atlanta - Tampa - Daytona Beach - Winter Park

Building Quality Signage Since 1901

Revisions:

R1: Updated monument sign base and changed all to LED.

R2: Updated elevations.

Colors Depicted In This Rendering May Not Match Actual Finished Materials. Refer To Product Samples For Exact Color Match

Client Approval/Date: _____

Landlord Approval/Date: _____

Account Rep:

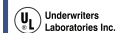
Randy Cearlock

Project Manager:

S. Maeser

Drawn By:

K. Singleton



ELECTRICAL TO USE U.L.-48 LISTED COMPONENTS AND SHALL MEET ALL NEC STANDARDS

Project / Location:



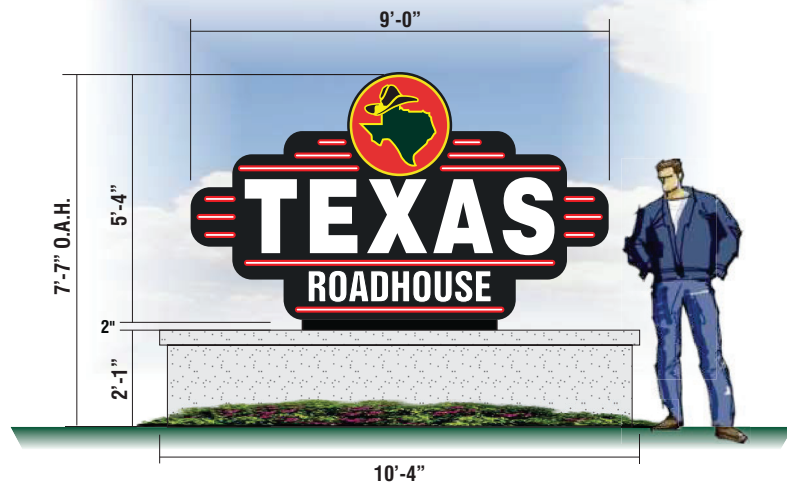
Job Number: **23-64377-10**

Date: **April 14, 2021**

Sheet Number: **6** Of **9**

Design Number: **23-64377-10R2**

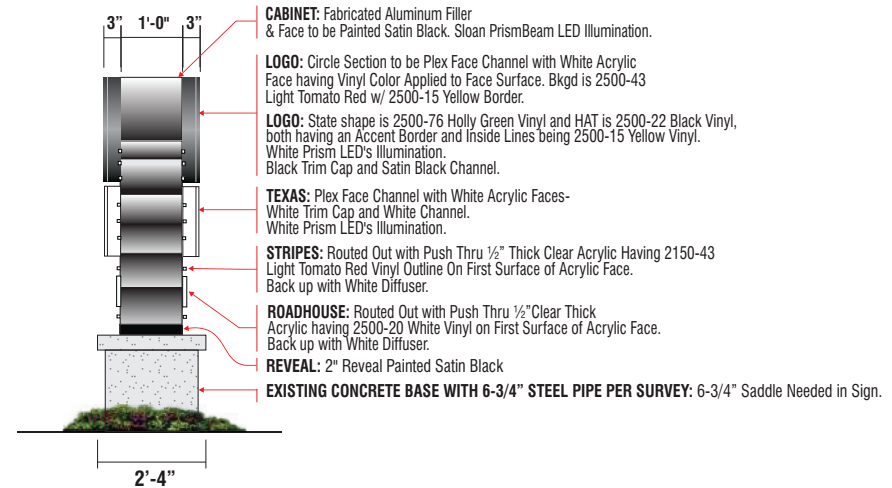
This original drawing is provided as part of a planned project and is not to be exhibited, copied or reproduced without the written permission of Federal Health Sign Company, LLC or its authorized agent. © 2008



SIGN TYPE F Double Sided Internally Illuminated Monument Sign 48.0 SQ.FT.
 Scale: 3/8" = 1'-0"
 Scope: Remove existing D/F aluminum sign and dispose. Manufacture and install D/F LED illuminated sign over existing 6-3/4" pipe.

MATERIAL FINISH COLORS		
AKZO Satin Black	2500-20 White Vinyl	2150-43 Light Tomato Red Vinyl
Cabinet and Face Bkgd	Copy	Logo Circle & Stripe Bkgd.
2500-76 Holly Green Vinyl	2500-15 Yellow Vinyl	2500-22 Black Vinyl Applied to Yellow Bkgd.
Logo: "State"	Logo: Circle, Hat & State Border.	Logo: "Hat"

NOTE: UPON CUSTOMER ACCEPTANCE, FEDERAL HEATH ENGINEERING DEPARTMENT WILL PROVIDE FABRICATION DRAWINGS & ENGINEERED SEAL DRAWINGS IF REQUIRED
THIS DRAWING IS FOR PRESENTATION ONLY



Typical End View
 Scale: 3/8" = 1'-0"

FEDERAL HEATH
SIGN COMPANY
 www.FederalHeath.com
 160 W. Carmel Drive, Suite 236 Carmel, IN 46032
 (317) 581-7790 Fax (317) 581-7783

Manufacturing Facilities:
 Oceanside - Euless - Jacksonville - Columbus
 Office Locations:
 Oceanside - Las Vegas - Laughlin - Idaho Falls
 Euless - Jacksonville - Houston - San Antonio
 Corpus Christi - Grafton - Milwaukee
 Willowbrook - Louisville - Indianapolis - Columbus
 Cincinnati - Westerville - Knoxville - Tunica
 Atlanta - Tampa - Daytona Beach - Winter Park
Building Quality Signage Since 1901

Revisions:
R1: Updated monument sign base and changed all to LED.
R2: Updated elevations.
 Colors Depicted In This Rendering May Not Match Actual Finished Materials. Refer To Product Samples For Exact Color Match
 Client Approval/Date: _____
 Landlord Approval/Date: _____

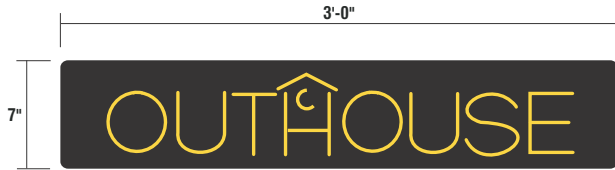
Account Rep: **Randy Cearlock**
 Project Manager: **S. Maeser**
 Drawn By: **K. Singleton**
 Underwriters Laboratories Inc. ELECTRICAL TO USE U.L.-48 LISTED COMPONENTS AND SHALL MEET ALL N.E.C. STANDARDS

Project / Location:

SWQ MERIDIAN PKWY & RT 59
AURORA, IL
(NAPERVILLE RELOCATION)

Job Number: **23-64377-10**
 Date: **April 14, 2021**
 Sheet Number: **8** Of **9**
 Design Number: **23-64377-10R2**

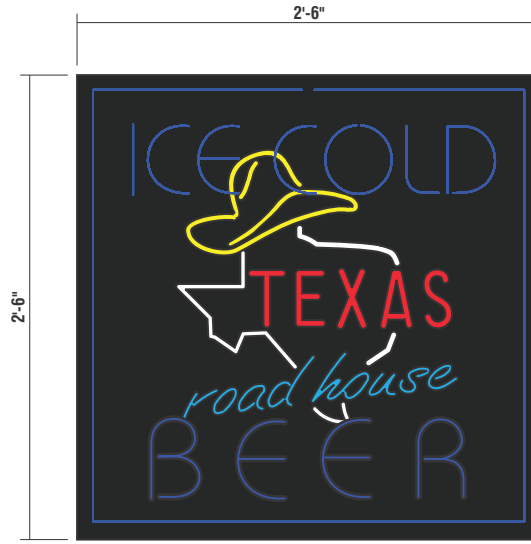
This original drawing is provided as part of a planned project and is not to be exhibited, copied or reproduced without the written permission of Federal Heath Sign Company, LLC or its authorized agent. © 2008



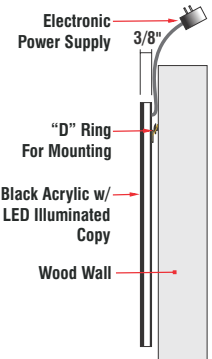
G 7" Outhouse Display PART # TR7300UTL



H 16" Willies Corner Display PART # TR16WCL



I 30" Ice Cold Beer Display PART # TR3030ICBL



Typical Section

Not to Scale

INSTALLATION OF THIS SIGN SHALL CONFORM TO ARTICLE 600 OF THE NEC, UL48, AND/OR OTHER APPLICABLE LOCAL CODES, INCLUDING PROPER GROUNDING AND BONDING OF SIGN.

LOCATION OF DISCONNECT SWITCH AFTER INSTALLATION SHALL COMPLY WITH ARTICLE 600-6(A) OF THE NEC.

Single Face Illuminated LEdeon Wall Sign | Interior Application

Scale: 1 1/2" = 1'-0"

Specifications:

- S/F LEdeon black acrylic face w/ LED illuminated copy/graphics.
- Sign mounts flush to wall.
- Electronic power supply plugs into standard wall outlet.



160 W. Carmel Drive, Suite 236 Carmel, IN 46032
(317) 581-7790 Fax (317) 581-7783

Manufacturing Facilities:
Oceanside - Euless - Jacksonville - Columbus
Office Locations:
Oceanside - Las Vegas - Laughlin - Idaho Falls
Euless - Jacksonville - Houston - San Antonio
Corpus Christi - Grafton - Milwaukee
Willowbrook - Louisville - Indianapolis - Columbus
Cincinnati - Westerville - Knoxville - Tunica
Atlanta - Tampa - Daytona Beach - Winter Park

Building Quality Signage Since 1901

Revisions:

- R1: Updated monument sign base and changed all to LED.
R2: Updated elevations.

Colors Depicted In This Rendering May Not Match Actual Finished Materials. Refer To Product Samples For Exact Color Match

Client Approval/Date:

Landlord Approval/Date:

Account Rep: Randy Cearlock

Project Manager: S. Maeser

Drawn By: K. Singleton

UL Underswriters Laboratories Inc. ncc ELECTRICAL TO USE U.L.-48 LISTED COMPONENTS AND SHALL MEET ALL N.E.C. STANDARDS

Project / Location:

TEXAS
road house
SWQ MERIDIAN PKWY & RT 59
AURORA, IL
(NAPERVILLE RELOCATION)

Job Number: **23-64377-10**

Date: **April 14, 2021**

Sheet Number: **9** Of **9**

Design Number: **23-64377-10R2**

This original drawing is provided as part of a planned project and is not to be exhibited, copied or reproduced without the written permission of Federal Heath Sign Company, LLC or its authorized agent. © 2008