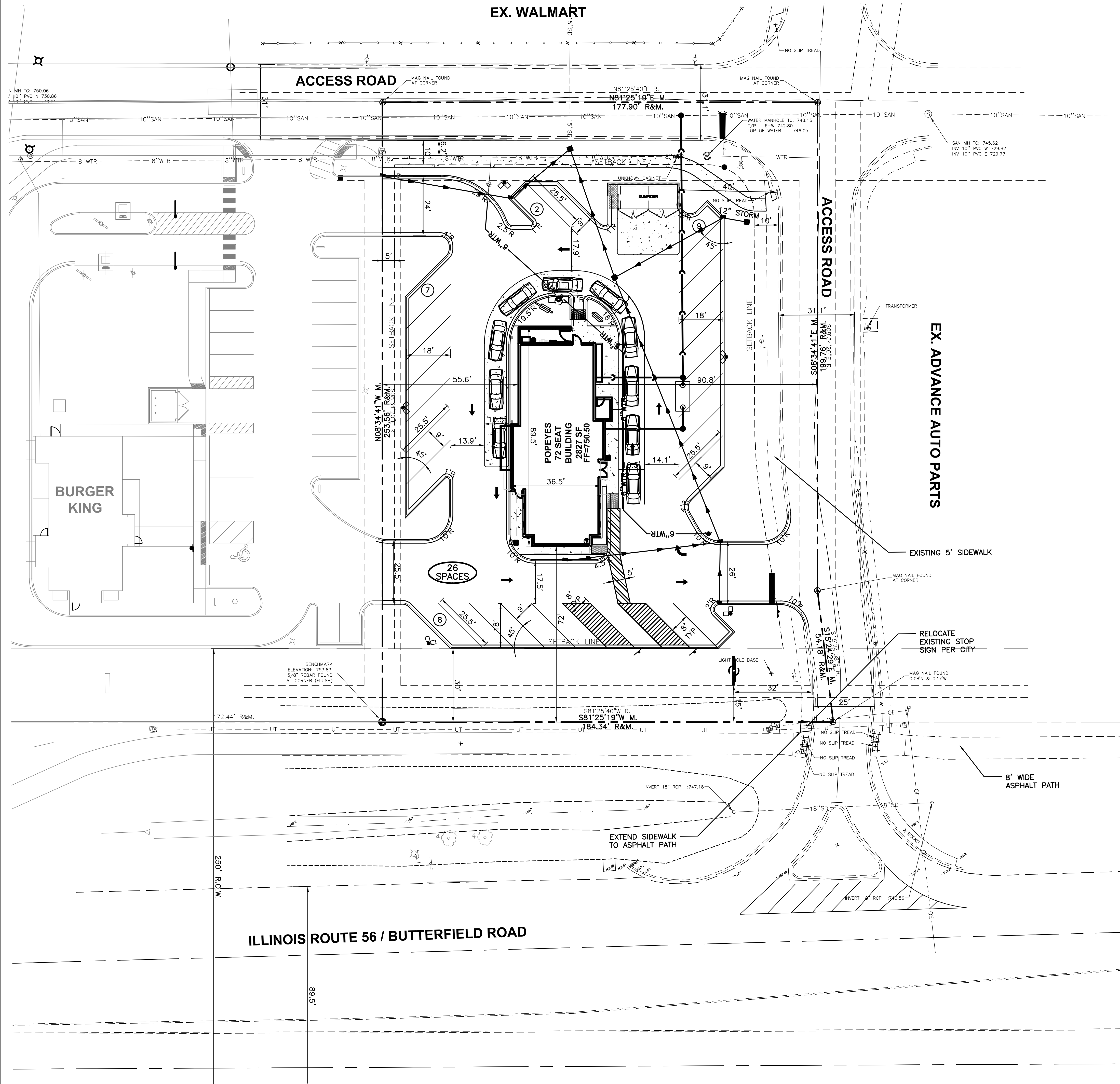


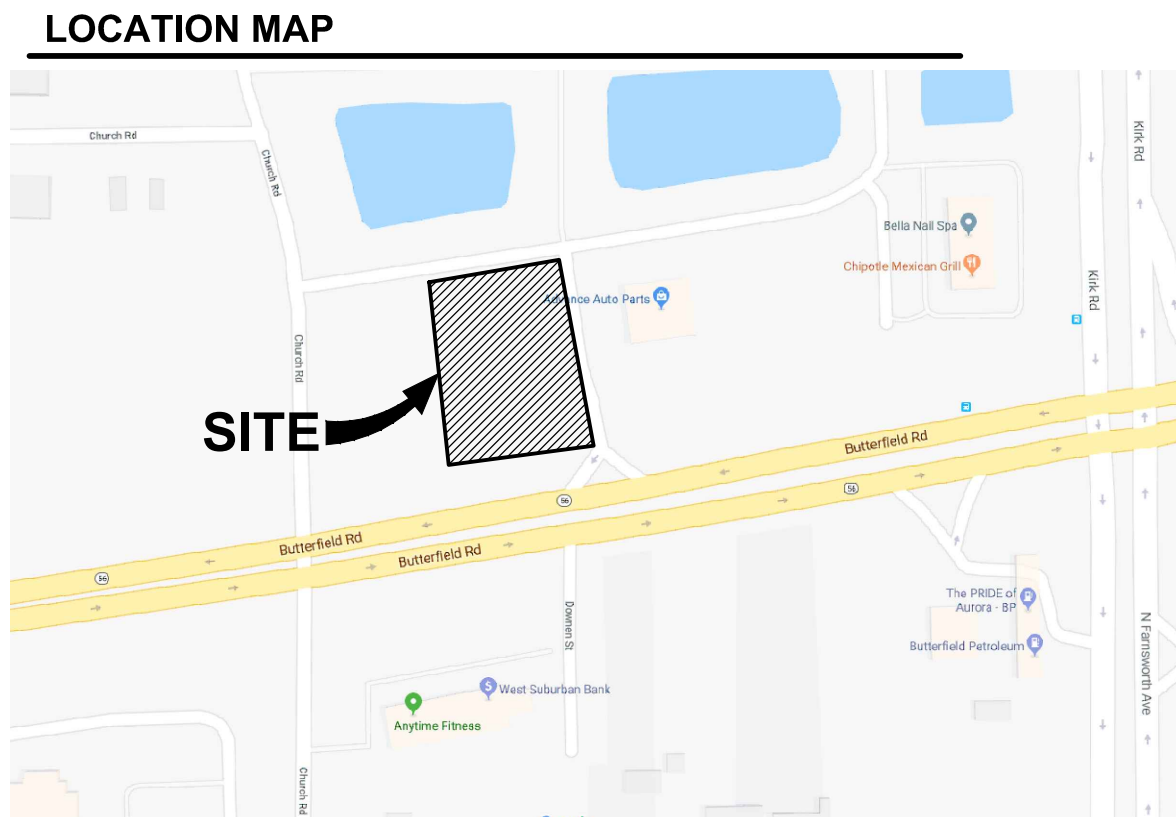
FINAL PLAN FOR POPEYE'S RESTAURANT



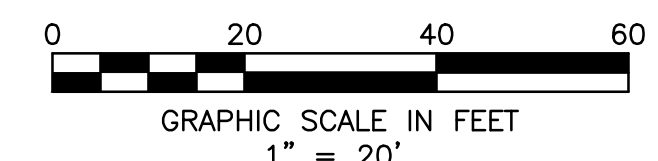
- ### LEGEND
- PROPOSED BOUNDARY
 - PROPOSED SANITARY SEWER
 - PROPOSED STORM DRAIN
 - WTR --- PROPOSED WATER MAIN
 - UE --- PROPOSED ELECTRIC
 - OE --- PROPOSED OVERHEAD ELECTRIC
 - G --- PROPOSED GAS
 - UT --- PROPOSED TELEPHONE
 - OT --- PROPOSED OVERHEAD TELEPHONE
 - PROPOSED CATCH BASIN
 - PROPOSED CURB INLET
 - PROPOSED MANHOLE
 - ▼ PROPOSED FLARED END SECTION
 - PROPOSED CLEAN OUT
 - ▲ PROPOSED FIRE HYDRANT
 - ⊗ PROPOSED VALVE
 - ⊙ PROPOSED VALVE VAULT
 - ⊕ PROPOSED ELECTRICAL MANHOLE
 - ⊖ PROPOSED TELEPHONE MANHOLE
 - LIGHT POLES
 - ⊕ BENCHMARK
 - POSITIVE SLOPED CURB
 - NEGATIVE SLOPED CURB
 - ⊕ MONUMENT SIGN, 8' HIGH
 - ⊕ NUMBER OF PARKING SPACES

Development Data Table: Final Plan

Description	Value	Unit
a) Tax/Parcel Identification Number(s) (PINs): 12-35-480-005		
b) Proposed land use(s): Restaurant with a drive-through facility		
c) Total Property Size	1.03950872	Acres
d) Total Lot Coverage (buildings and pavement)	45281	Square feet
e) Open space / landscaping	29,920	Square feet
f) Land to be dedicated to the School District	66%	Percent
g) Land to be dedicated to the Park District	15,361	Square feet
h) Number of parking spaces provided (individually accessible)	34%	Percent
i. surface parking lot	26	spaces
perpendicular	26	spaces
parallel	0	spaces
angled	24	spaces
angled handicapped	2	spaces
ii. enclosed	0	spaces
iii. bike racks	0	racks
i) Number of buildings	1	
i. Number of stories	1	stories
ii. Building Square Footage (typical)	2,827	square feet
iii. Square Footage of retail floor area	2,827	square feet
iv. First Floor Building Square Footage (typical)	2,827	square feet



BENCHMARK:
THE BASIS OF ELEVATIONS HEREON IS NAVD 88 - 5/8" REBAR FOUND - SEE DRAWING FOR LOCATION.
ELEVATION = 753.83'
THE EXISTING CONDITIONS SHOWN ARE BASED UPON A SURVEY PREPARED BY WOOLPERT AND DATED JANUARY 24, 2018.



Layout Tab Name: C200 SITE PLAN, Images: aerial.jpg, Xrefs: 78283-X-DIG.dwg, 78283-TBLK.dwg, 78283-P.dwg, 78283-X.dwg, 78283-Blockground.dwg
 Last Saved By: ccooke, 10/29/2018 2:07:11 PM
 G:\DE\clients\z&h Foods\078283 Popeyes - Aurora, IL\4.0 Disciplines\Civil\Cadd\Exhibits\FINAL PLAN.dwg Plotted By: Cooke, Jake Plotted: October 29, 2018, 2:09:31 PM

No.	DATE	REVISION
1	10/15/18	REVISED PER CITY COMMENTS

PROJECT No: 078283
 DATE: 08/02/18
 DES. BY: RW
 DR. BY: JC
 CKD. BY: RW

1815 South Meyers Road
 Suite 950
 Oakbrook Terrace, IL 60181
 630.424.9080
 FAX: 630.485.3731

WOOLPERT
 ARCHITECTURAL ENGINEERING (INCORPORATED)

SITE IMPROVEMENT PLANS
POPEYE'S RESTAURANT
 1382 BUTTERFIELD ROAD, AURORA, IL 60502
 SAVANNAH CROSSINGS, LOT 10

FINAL PLAN
 SHEET NO. **EXH-1**