

Property Research Sheet

Location ID#(s): 71769

As of: 9/29/2021

Researched By: Steve Broadwell

Parcel Number(s): 15-24-276-033

Legislative History

R1987-3420 approved on 4/24/1987: ADVISING PAUL RASMUSSEN TO FILE A FORMAL PROTEST TO THE DUPAGE COUNTY BOARD OF APPEALS REQUESTING A SUPER MAJORITY VOTE ON THE ZONING REQUEST FOR CALVARY TEMPLE.

R1993-035 approved on 2/2/1993: A RESOLUTION ACCEPTING WATERMAIN IMPROVEMENTS FOR CENTURY BUILDERS, INCORPORATED. CALVARY TEMPLE.

O2002-113 approved on 10/22/2002: AN ORDINANCE PROVIDING FOR THE EXECUTION OF AN ANNEXATION AGREEMENT PROVIDING FOR O(S), R-4A(S) AND B-2(S) SPECIAL USE PLANNED DEVELOPMENT ZONING WITH THE OWNERS OF RECORD OF TERRITORY WHICH MAY BE ANNEXED TO THE CITY OF AURORA AND WHICH IS LOCATED AT THE NORTHWEST CORNER OF ROUTE 59 AND MONTGOMERY ROAD IN DUPAGE COUNTY, ILLINOIS.

O2002-114 approved on 10/22/2002: AN ORDINANCE ANNEXING CERTAIN PROPERTY LOCATED AT THE NORTHWEST CORNER OF ROUTE 59 AND MONTGOMERY ROAD TO THE CITY OF AURORA, ILLINOIS 60504 PURSUANT TO AN APPROVED ANNEXATION AGREEMENT.

O2002-115 approved on 10/22/2002: AN ORDINANCE ESTABLISHING A SPECIAL USE PLANNED DEVELOPMENT AND APPROVING A PLAN DESCRIPTION FOR 114 ACRES LOCATED AT THE NORTH WEST CORNER OF ROUTE 59 AND MONTGOMERY ROAD.

R2002-498 approved on 10/22/2002: A RESOLUTION APPROVING A PRELIMINARY PLAN FOR PROPERTY LOCATED AT THE NORTHWEST CORNER OF ROUTE 59 AND MONTGOMERY ROAD.

PDFNL2003-015 approved on 4/24/2003: A RESOLUTION APPROVING A WAIVER OF THE FINAL PLAN REQUIREMENTS FOR A MAINTENANCE BUILDING LOCATED IN THE CALVARY TEMPLE CHURCH SUBDIVISION, AURORA, ILLINOIS.

PDFNL2033-042 approved on 8/28/2003: A RESOLUTION APPROVING THE FINAL PLAN FOR THE CALVARY TEMPLE CHURCH SUBDIVISION FOR A CHURCH USE LOCATED AT 9S200 ROUTE 59.

R2004-359 approved on 8/24/2004: A RESOLUTION FOR LETTER OF CREDIT REDUCTION NUMBER ONE CALVARY CHURCH MAINTENANCE BUILDING.

R2011-230 approved on 8/23/2011: A RESOLUTION AUTHORIZING THE SECURITY REDUCTION NUMBER ONE FOR CALVARY CHURCH PHASE I - 1111 S. STATE ROUTE 59.

R2011-267 approved on 9/27/2011: A RESOLUTION ACCEPTING IMPROVEMENTS AND WAIVING OF THE MAINTENANCE PERIOD FOR CALVARY CHURCH, PHASE I, 1111 S. ROUTE 59.

O2012-009 approved on 2/28/2012: AN ORDINANCE PROVIDING FOR THE EXECUTION OF AN ANNEXATION AGREEMENT REVISION PROVIDING FOR A ROADWAY CONSTRUCTION AND FINANCING AGREEMENT FOR COMMONS DRIVE WITH THE OWNERS OF RECORD OF TERRITORY LOCATED AT 9S200 STATE ROUTE 59 IN DUPAGE COUNTY ILLINOIS.

R2012-295 approved on 11/13/2012: A RESOLUTION ACCEPTING THE DEDICATION OF RIGHT OF WAY FOR COMMONS DRIVE LOCATED ALONG THE WESTERN PROPERTY LINE OF THE CALVARY TEMPLE CHURCH PROPERTY.

R2013-340 approved 12/10/2013: A RESOLUTION ACCEPTING IMPROVEMENTS AND MAINTENANCE SECURITY FOR CALVARY CHURCH - COMMONS DRIVE - WEST ACCESS.

O2016-112 approved on 12/20/2016: AN ORDINANCE APPROVING OBVIOUS CHANGES TO AURORA'S COMPREHENSIVE PLAN FOR 13 AREAS LOCATED THROUGHOUT THE CITY OF AURORA.

O2021-048 approved on 9/28/2021: AN ORDINANCE ESTABLISHING A CONDITIONAL USE PLANNED DEVELOPMENT, APPROVING THE CHELSEA MANOR PLAN DESCRIPTION AND AMENDING CHAPTER 49 OF THE CODE OF ORDINANCES, CITY OF AURORA, BY MODIFYING THE ZONING MAP ATTACHED THERETO TO AN UNDERLYING ZONING OF R-4A(C) TWO FAMILY DWELLING DISTRICT WITH A CONDITIONAL USE PLANNED DEVELOPMENT, AND OS-1(C) CONSERVATION, OPEN SPACE, AND DRAINAGE DISTRICT WITH A CONDITIONAL USE PLANNED DEVELOPMENT, FOR THE PROPERTY LOCATED NEAR THE SOUTHEAST CORNER OF SOUTH COMMONS DRIVE AND IRVING ROAD

R2021-262 approved on 9/28/2021: A RESOLUTION APPROVING A REVISION TO THE PRELIMINARY PLAT AND PLAN FOR THE PROPERTY LOCATED NEAR THE SOUTHEAST CORNER OF SOUTH COMMONS DRIVE AND IRVING ROAD

Location Maps Attached:

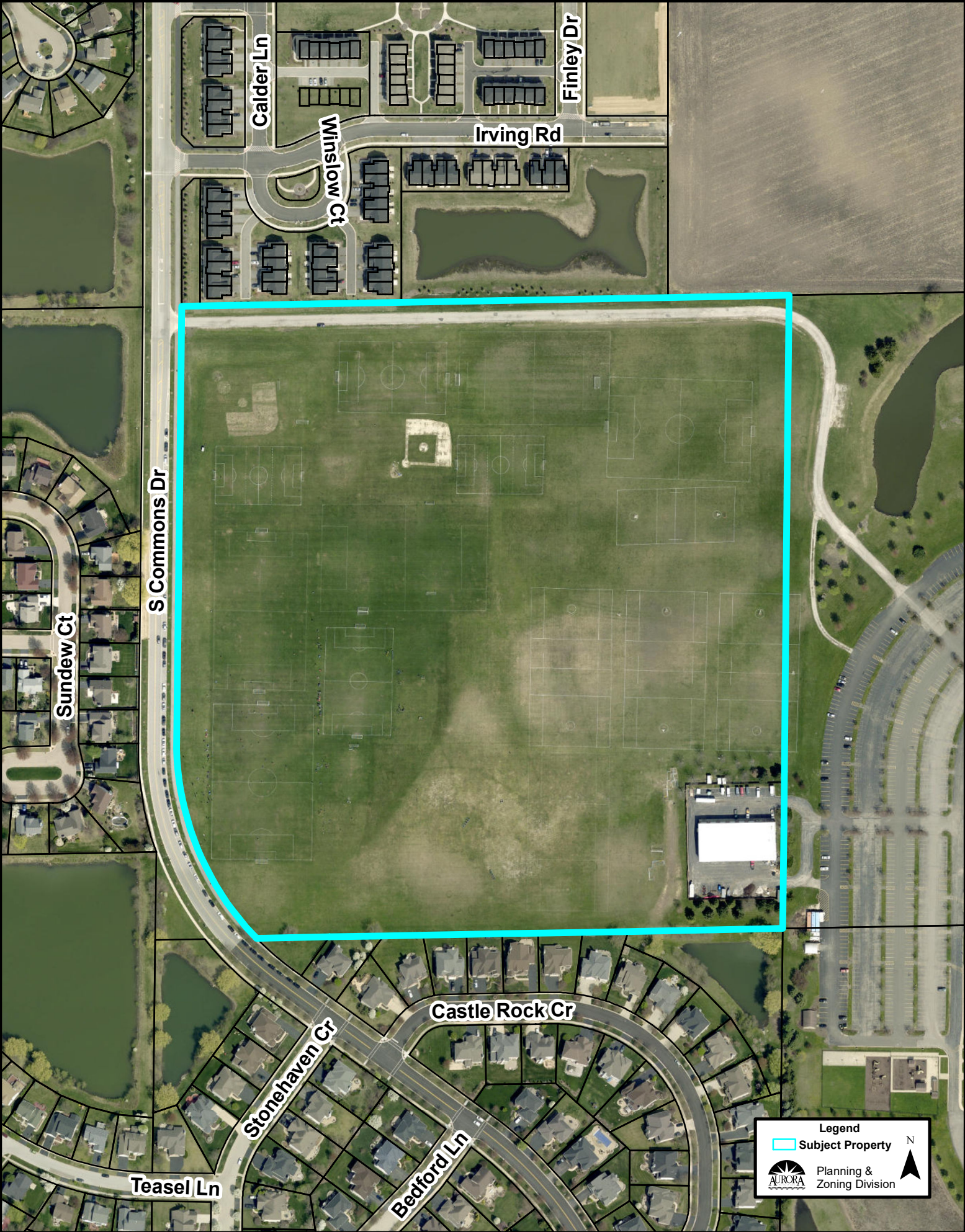
Aerial Overview

Location Map

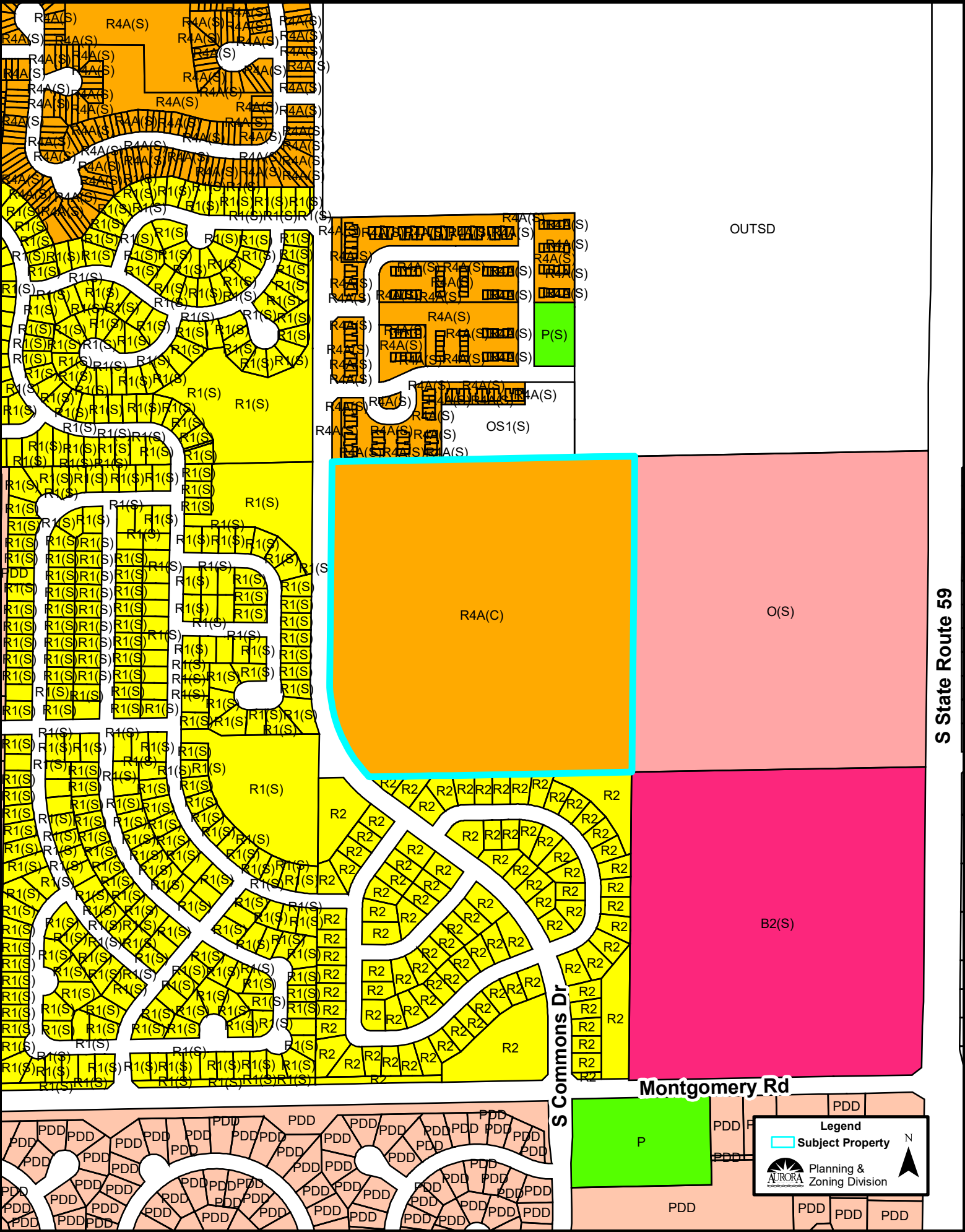
Zoning Map

Comprehensive Plan Map

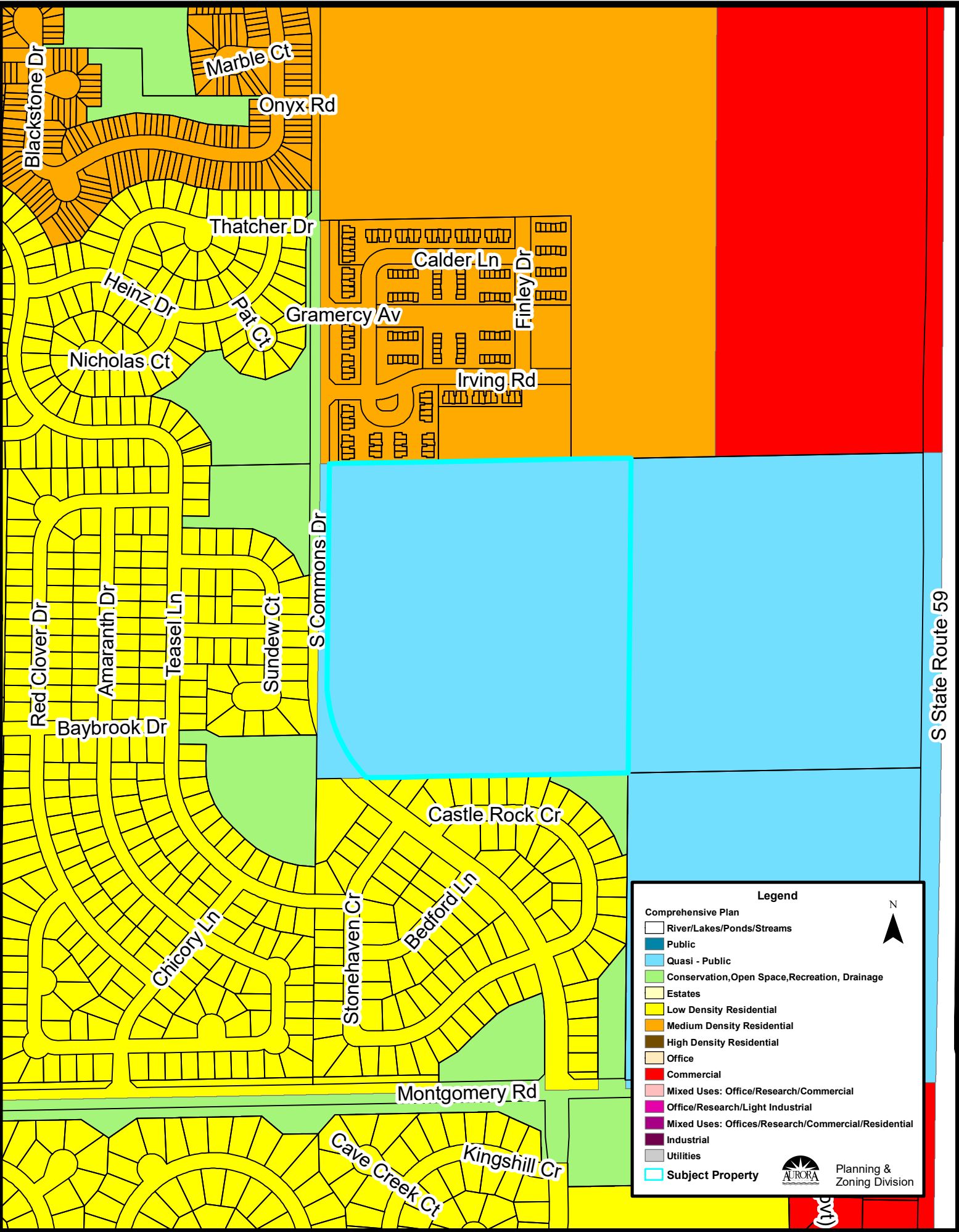
Aerial Map (1:1,500):

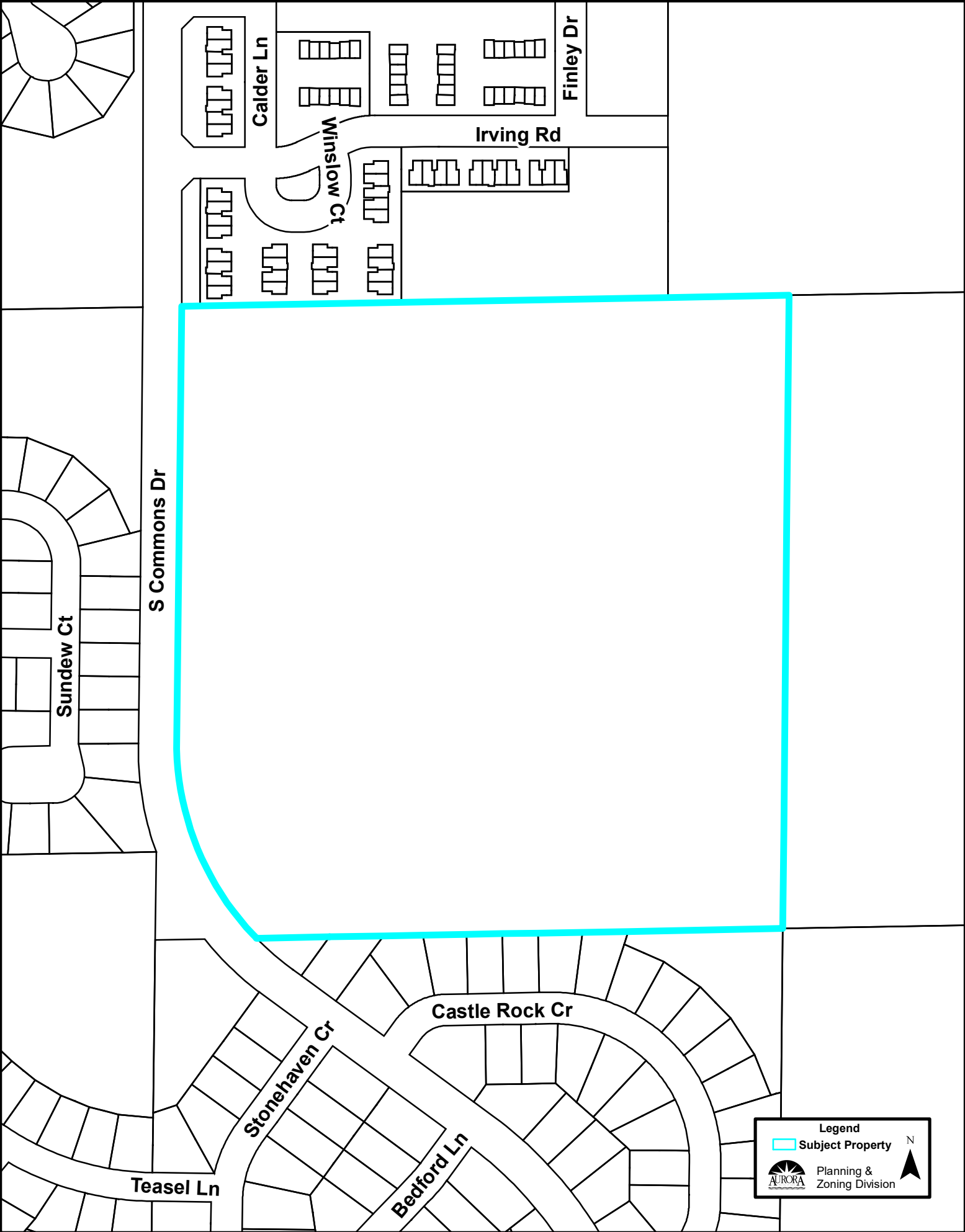


Zoning Map (1:5,000):



Comprehensive Plan (1:5,000):





Legend

 Subject Property

 Planning & Zoning Division

 N