

CONSULTANTS

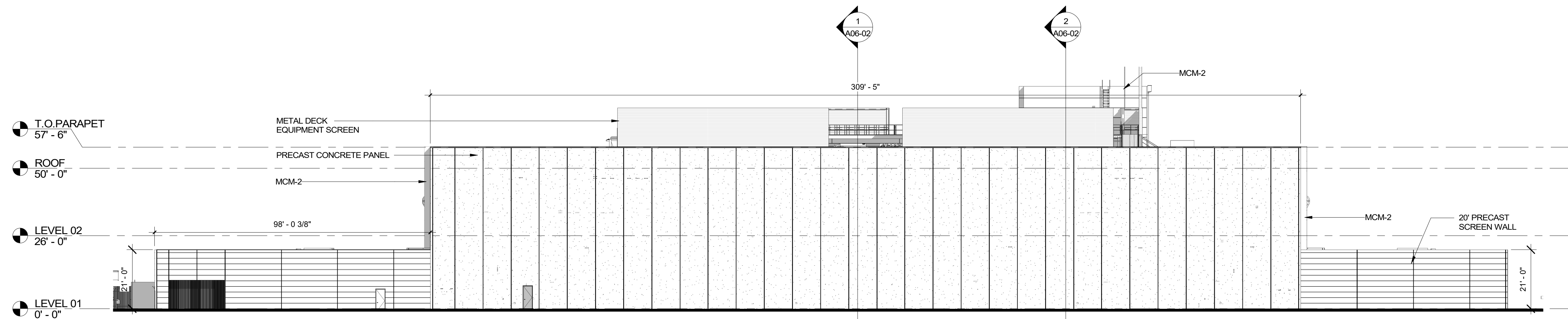
MEP **KW** Mission Critical Engineering
Member of WSP

STRUCTURAL **AGE**

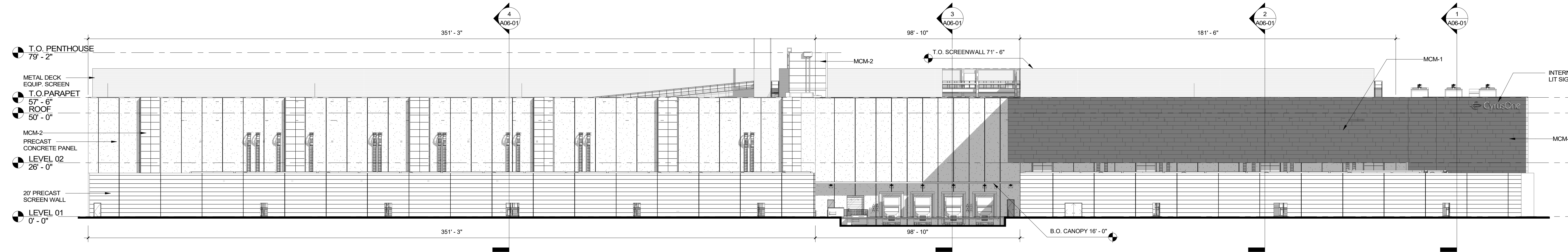
TELECOM **TD**
DESIGN CONSULTING LLC

CIVIL **Kimley»Horn**

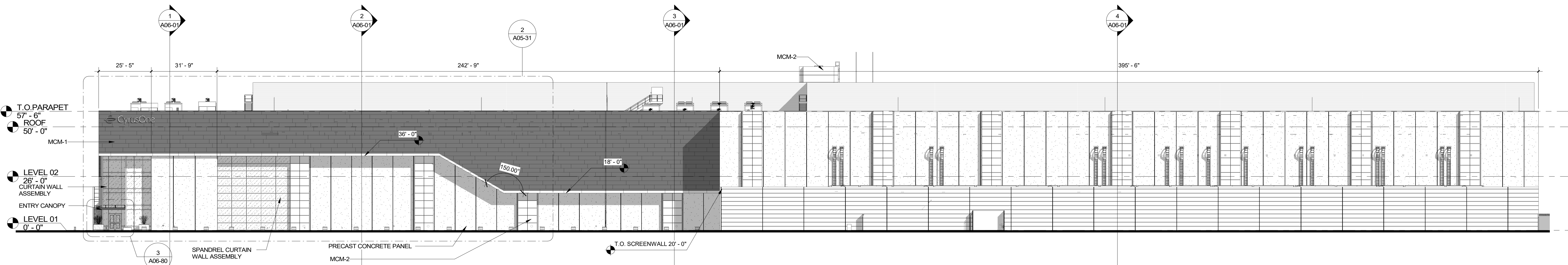
ISSUES	
1	02.23.2024 DESIGN DEVELOPMENT
2	04.26.2024 PRICING PROGRESS
3	05.10.2024 ISSUE FOR PERMIT
REVISIONS	
1	06.10.2024 EXTERIOR ELEVATIONS



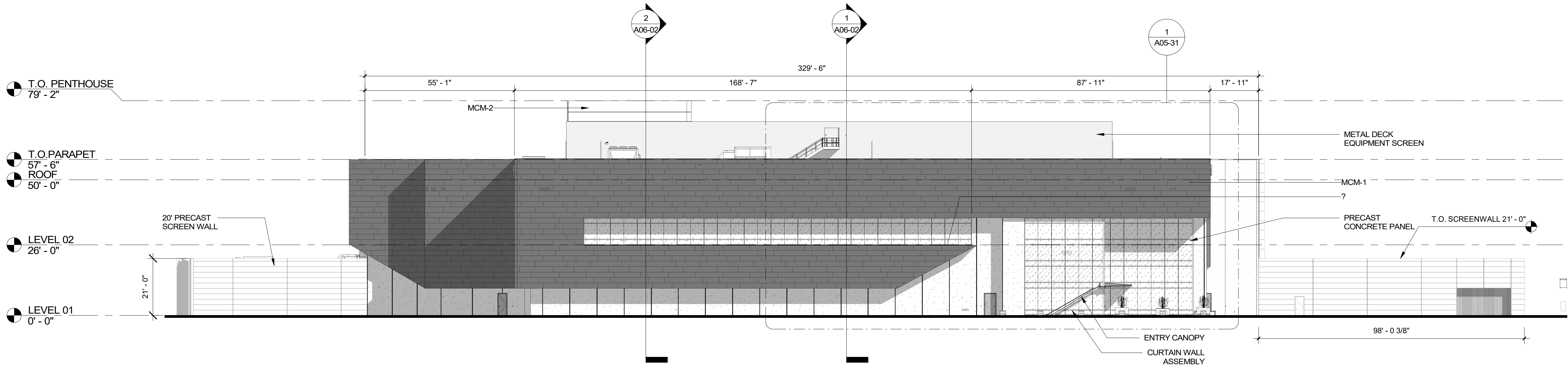
4 EXTERIOR ELEVATION - PLAN WEST
3/64" = 1'-0"



3 EXTERIOR ELEVATION - PLAN SOUTH
3/64" = 1'-0"

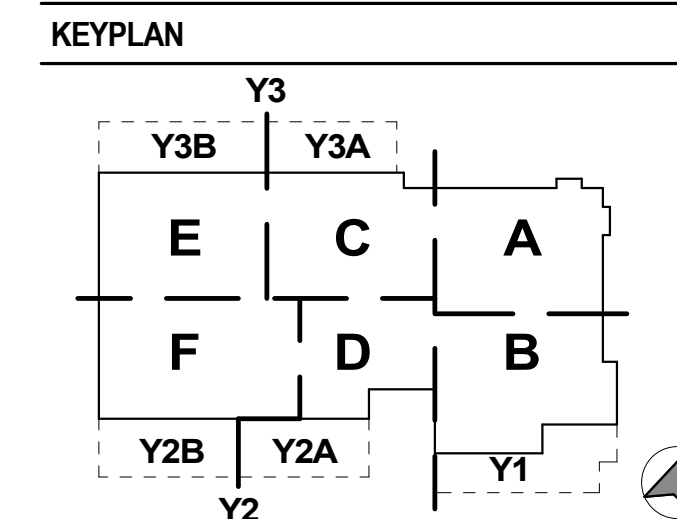


2 EXTERIOR ELEVATION - PLAN NORTH
3/64" = 1'-0"



1 EXTERIOR ELEVATION - PLAN EAST
3/64" = 1'-0"

	MATERIAL ARTICULATION				
	MATERIAL	GLAZING TRANSPARENT VS OPAQUE	PRIMARY BUILDING MATERIAL	METAL PANEL TYPE 1 BUILDING ENVELOPE SYSTEM	METAL PANEL TYPE 2 SCAFFER ENCLOSURES
NORTH					
TOTAL:	39,932 SF	2,113 SF (2%)	24,431 SF (61%)	8,608 SF (22%)	4,780 SF (12%)
SOUTH					
TOTAL:	38,410 SF	0 SF (0%)	30,880 SF (80%)	2,848 SF (7%)	4,682 SF (13%)
WEST					
TOTAL:	21,041 SF	0 SF (0%)	18,941 SF (90%)	2,100 SF (10%)	0 SF (0%)
EAST					
TOTAL:	20,128 SF	3,676 SF (18%)	4,522 SF (22%)	8,314 SF (59%)	0 SF (0%)
TOTAL					
TOTAL:	119,511 SF	5,789 SF (5%)	78,774 SF (66%)	21,870 SF (18%)	9,462 SF (8%)



EXTERIOR ELEVATIONS

PROJECT NUMBER 23001.0101
SHEET NUMBER

A05-01