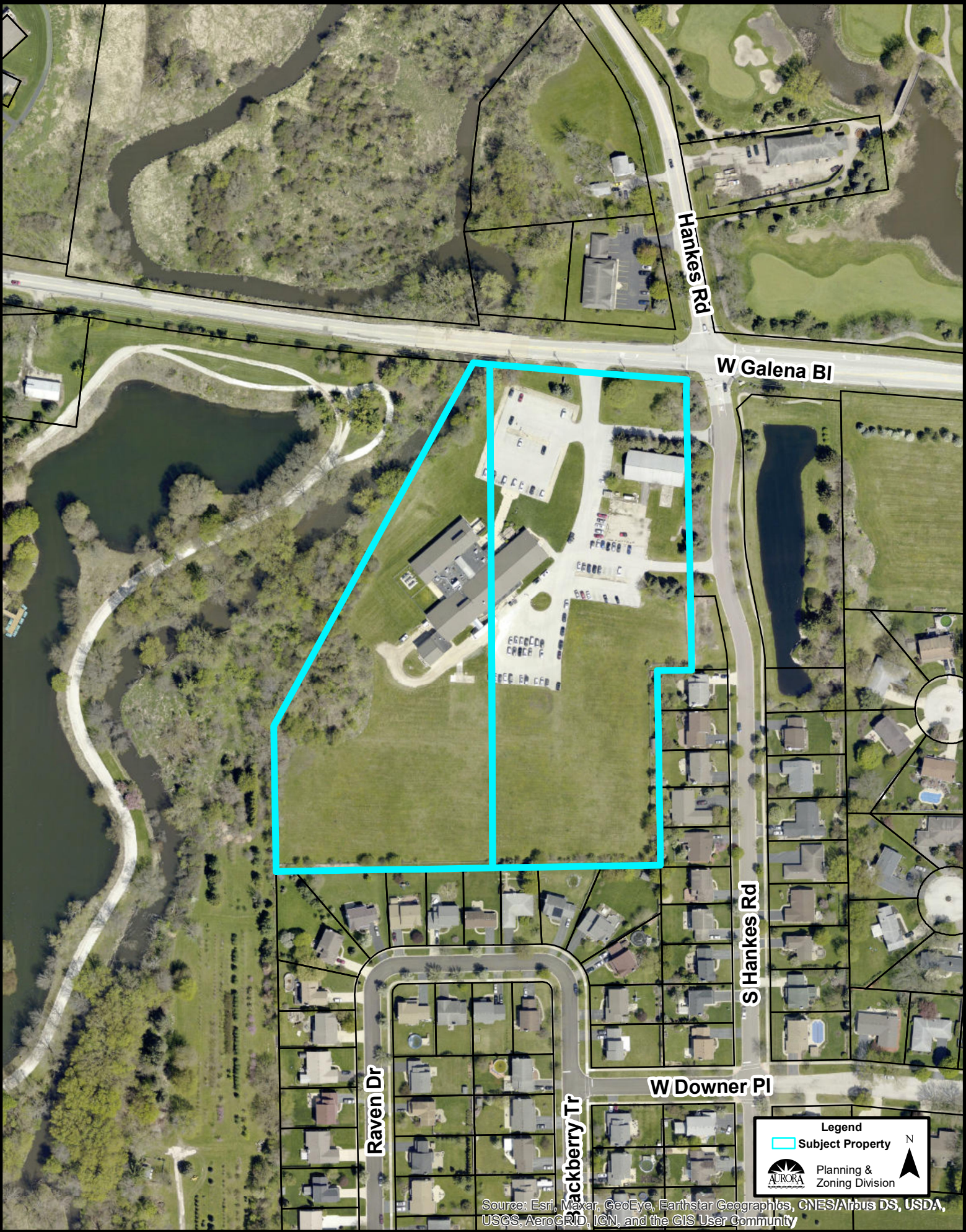



Aerial Photo (1:2,500):



Legend

Subject Property

 Planning & Zoning Division

N 

Source: Esri, Maxar, GeoEye, Earthstar Geographics, CNES/Airbus DS, USDA, USGS, AeroGRID, IGN, and the GIS User Community

The map displays a portion of Aurora, Colorado, with various zoning districts. The subject property is highlighted in pink and is located at the intersection of Hanks Rd and W Galena Bl. The property is zoned O(S). Surrounding properties are zoned R1, P, O, and OUTSD. The map also shows streets such as Hanks Rd, W Galena Bl, W Downer Pl, Raven Dr, and Blackberry Tr. A legend in the bottom right corner identifies the subject property and provides contact information for the Planning & Zoning Division.

Legend

- Subject Property


Planning & Zoning Division

AURORA

S Hanks Rd

Raven Dr

Blackberry Tr



Planning &
Zoning Division

