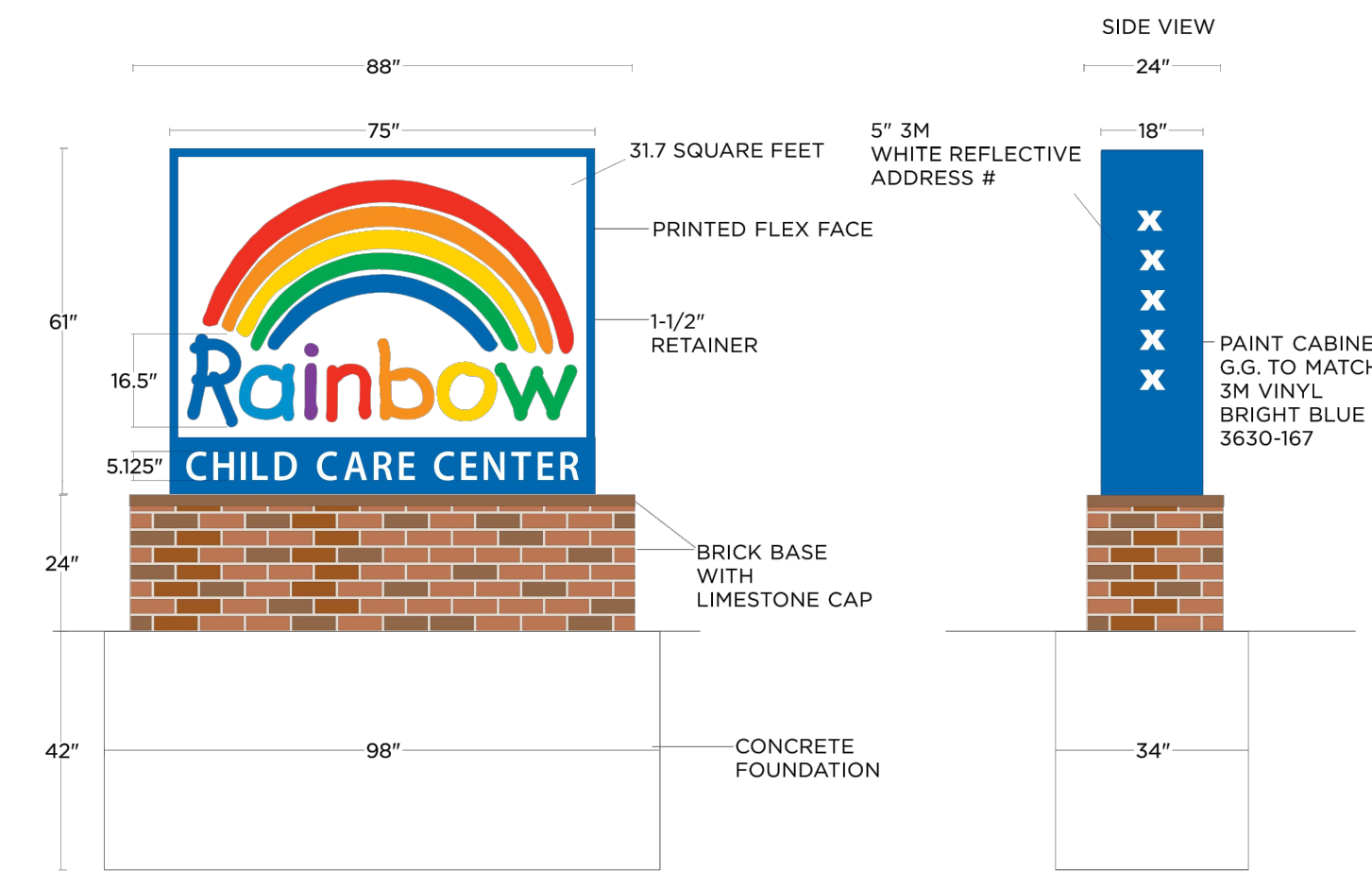
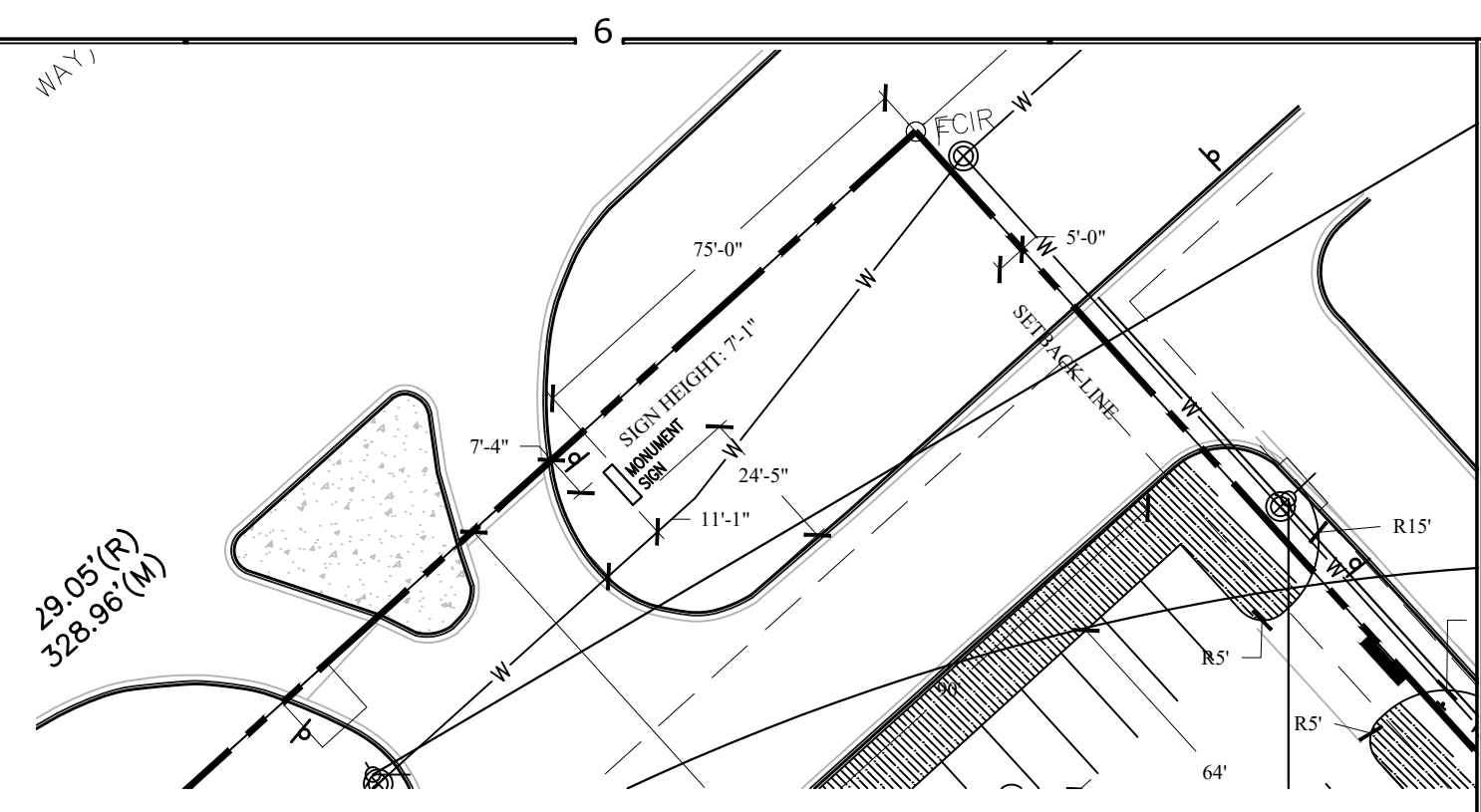
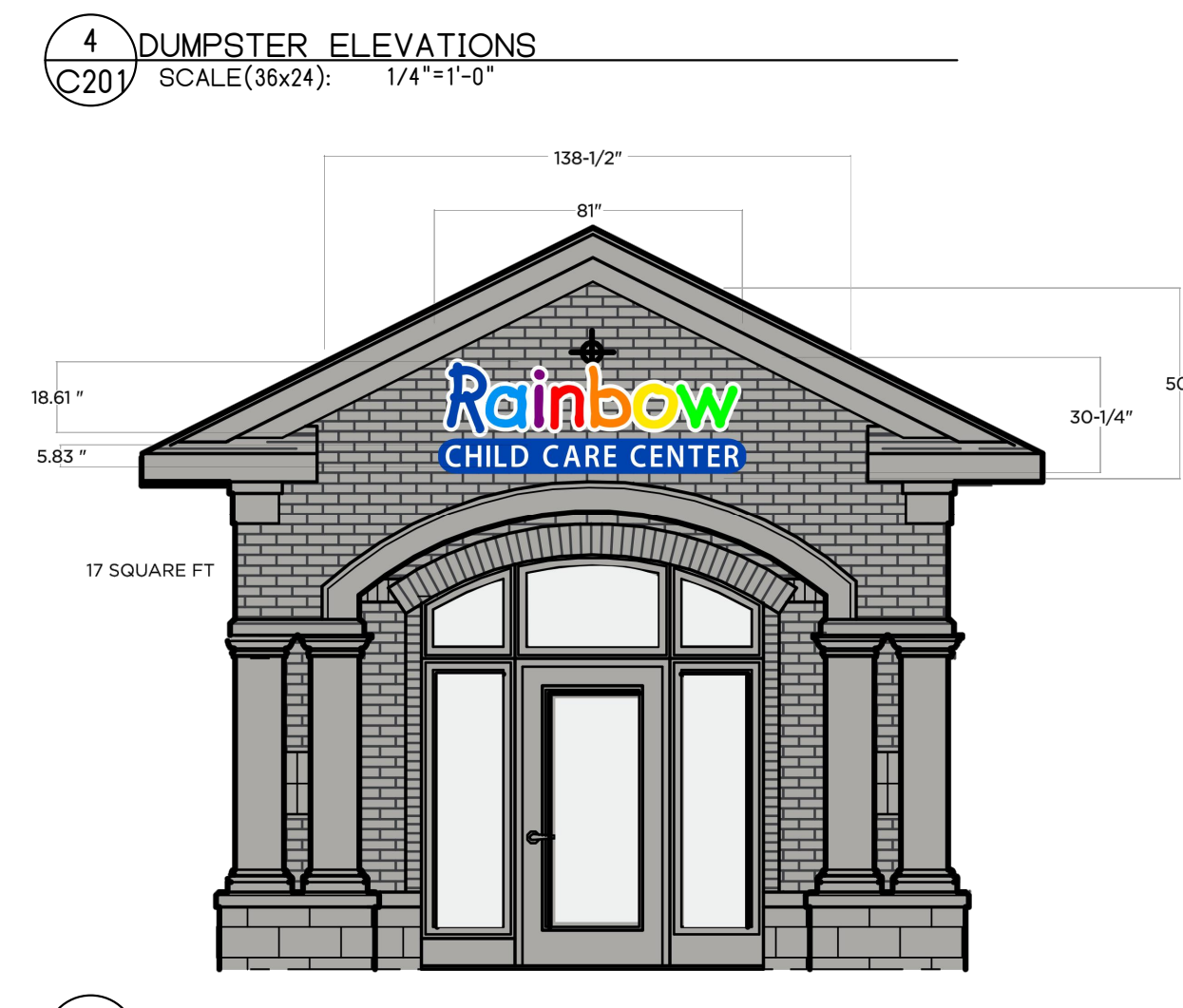
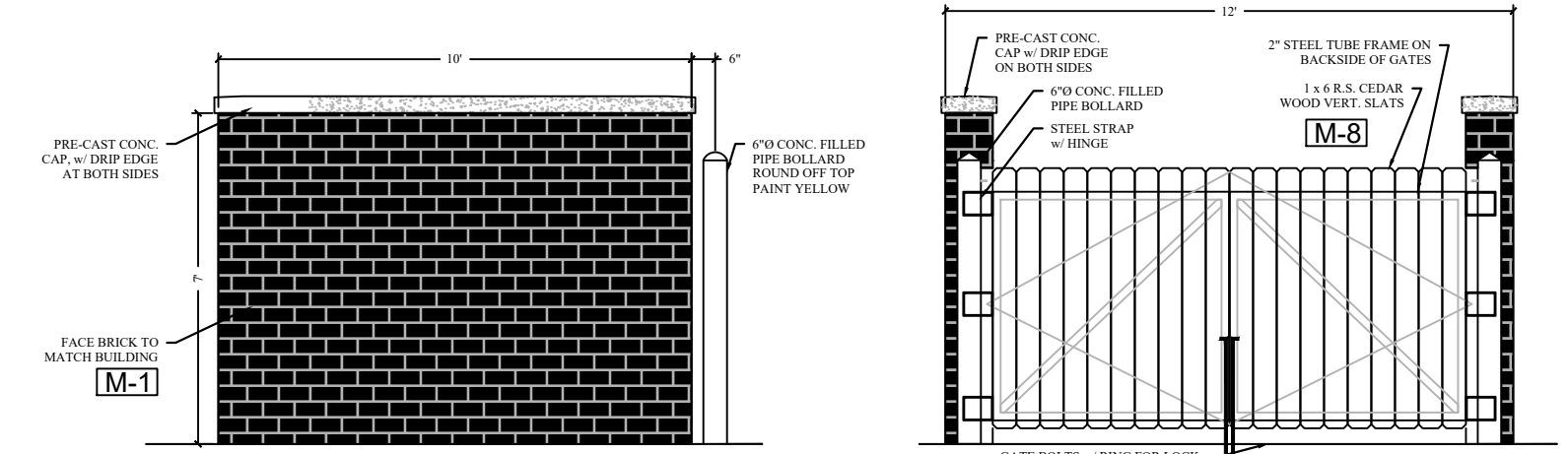


# ELEVATIONS



SYMBOL	ITEM	MANUFACTURER	MODEL	COLOR/FINISH	NOTES
M-1	BRICK	BRAMPTON BRICK	CROSSROADS SERIES	COLOR - JASPER	IF BRICK IS NOT READILY AVAILABLE PROVIDE OPTIONS FOR OWNER TO APPROVE
M-2	ASPHALT SHINGLES	GAF ROOFING	TIMBERLINE HD - LIFETIME SHINGLES	COLOR - WEATHERED WOOD	-
M-3	BREAK METAL TRIM	QUALITY EDGE	TRULINE EMBOSSED TRIM COIL	COLOR - 807 (CLAY)	-
M-4	VINYL SIDING	CERTAINTED CORPORATION	DOUBLE 5" CLAPBOARD	MIST	-
M-5	STONE VENEER	-	-	-	VER. W/ OWNER FOR MANUFACTURER, MODEL, AND COLOR.
M-6	PRE-FIN ALUMINUM GUTTER	MASTIC HOME EXTERIORS	6" GUTTER COIL - 27 GAUGE	COLOR - PEBBLESTONE CLAY	VERIFY W/ OWNER
M-7	SILLS	T.B.D.	LIMESTONE	VARIEGATED	-
M-8	CEDAR TRIM BOARD	-	CEDAR	NATURAL & SEALED	-
M-9	SPLITFACE CMU	MICHIGAN-CERTIFIED CONCRETE	SPLITFACED	VAOLS	IF BLOCK IS NOT READILY AVAILABLE PROVIDE OPTIONS FOR OWNER TO APPROVE

Wall Sign #	Description	Value	Unit
1	i) Width of Façade - on which Sign is Located	15.75	Feet
	ii) Height of Façade - on which Sign is Located	15.67	Feet
	iii) Square Footage of Façade - on which Sign is Located	246.80	Square Feet
	v) Width of Sign Face	6.75	Feet
	v) Height of Sign Face	2.52	Feet
	vi) Square Footage of Sign Face	17.01	Square Feet
	vii) Percent of Sign Coverage - Façade on which Sign is Located	7%	Percent

Ground Sign #	Description	Value	Unit
1	i) Length of street frontage - on which Sign is Located	329	Feet
	ii) Width of Sign Face	6.25	Feet
	iii) Height of Sign Face	5.08	Feet
	v) Square Footage of Sign Face	32	Square Feet
	v) Height of Sign (overall)	7	Feet
	vi) Width of Sign (overall)	7	Feet
	vii) Type of Sign	Illuminated Monument Sign	
	viii) Type of Sign Base	24"x24"x88" Brick Base	
	ix) Is there a Digital Display	No	
		If Yes then, Location of Digital Display on the sign	
	Height of Digital Display	Feet	
	Width of Digital Display	Feet	
	Square Footage of Digital Display	Square Feet	
	Percent of Digital Display Sign Coverage	Percent	

Description	Value	Unit
a) Building Height in feet (typical)	25.56	feet
b) Total Building Square Footage (typical)	11,990.00	Square Feet
c) First Floor Building Square Footage (typical)	11,990.00	Square Feet
d) Number of building stories (typical)	1.00	Square Feet
e) Exterior Material List (including colors) for all buildings and accessory structures: Brick - Brampton Brick, Crossroad Series, Jasper; Asphalt Shingles - Gaf Roofing, Timberline HD, Weathered Wood; Break Metal Trim - Quality Edge, Truline Embossed Trim Coil, Clay, Vinyl Siding - Certainteed Corp, Double 5" Clapboard, Mist; Stone Veneer - Verify w/ owner; Pre-fin Aluminum Gutter - Mastic Home Exteriors, 6" Gutter Coil 27 Gauge, Pebblestone Clay; Silis - Limestone, Variegated; Trim Board - Cedar, Natural&Sealed; Splitface CMU - Michigan Certified Concrete, Split Faced Vaols.		

REVISIONS  
1 06-07-2018 REVISED PER PZ REVIEW COMMENTS

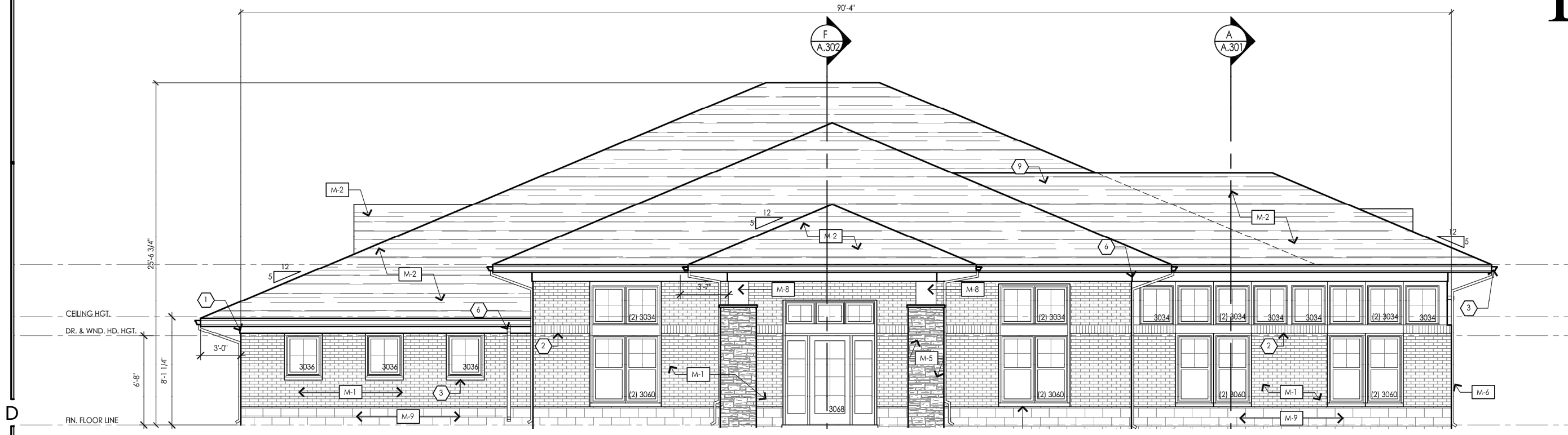
LISA MEEKER CRANDALL  
062.065006  
ENGINEER  
DATE: 05-08-2018  
LISA MEEKER CRANDALL  
ILLINOIS REGISTRATION NO. 62.065006  
EXPIRES 11-30-2019

ENGINEERING THAT WORKS  
ENGINEERING WITH STYLE  
**Crاندall**  
ENGINEERING DESIGN  
116.077.0996 116.077.0997  
236 EAST MAIN STREET  
GAS CITY, IN 46033

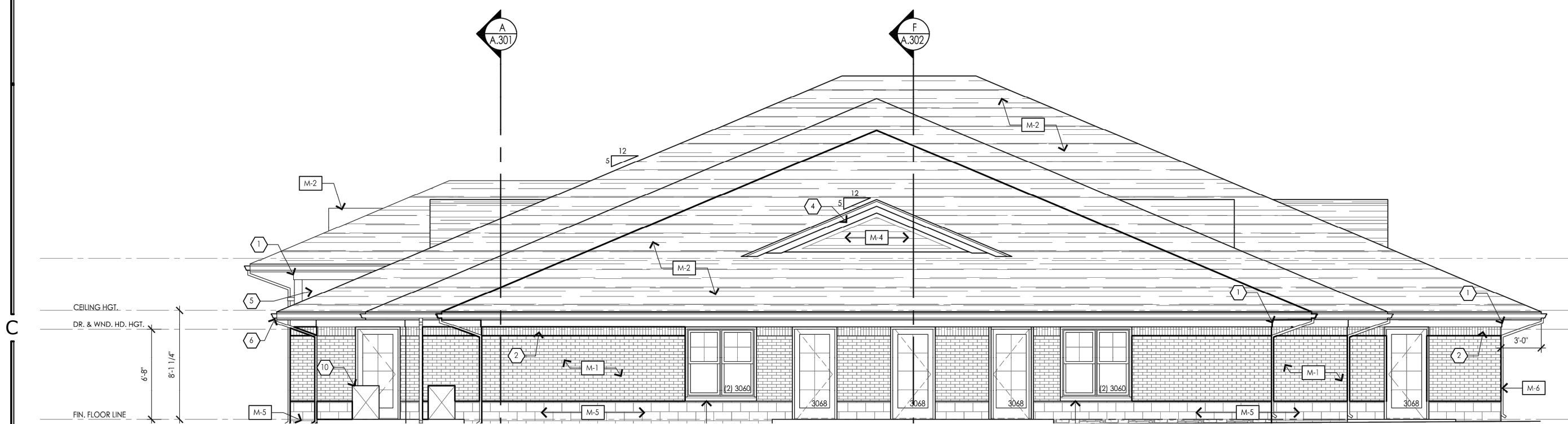
CITIZENS FIRST NATIONAL BANK BUSINESS PARK-LOT 2  
AURORA, ILLINOIS 60503  
814 DEVELOPMENT  
1742 CROOKS ROAD  
TROY, MICHIGAN 48084  
RAINBOW CHILD CARE CENTER  
OCDEN AVENUE & FARNSWORTH AVENUE  
AURORA, IL 60503

DATE: 06-13-2018 PROJECT NO.: 2018-007  
DRAWN BY: AW / XC CHECKED BY: LMC  
SHEET TITLE: ELEVATIONS  
SHEET NO.: C201

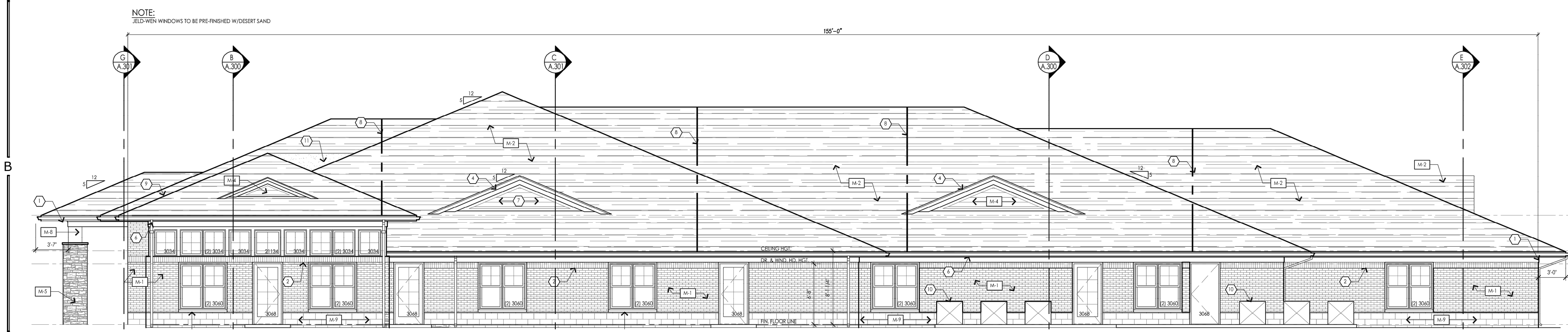
# ELEVATIONS



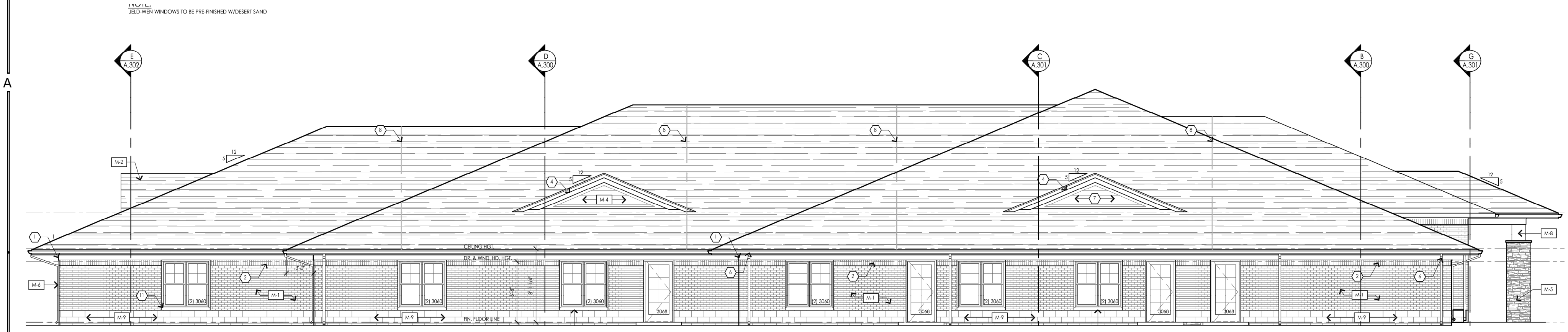
4 NORTH BUILDING ELEVATION  
SCALE(36x24): 1/8"=1'-0"



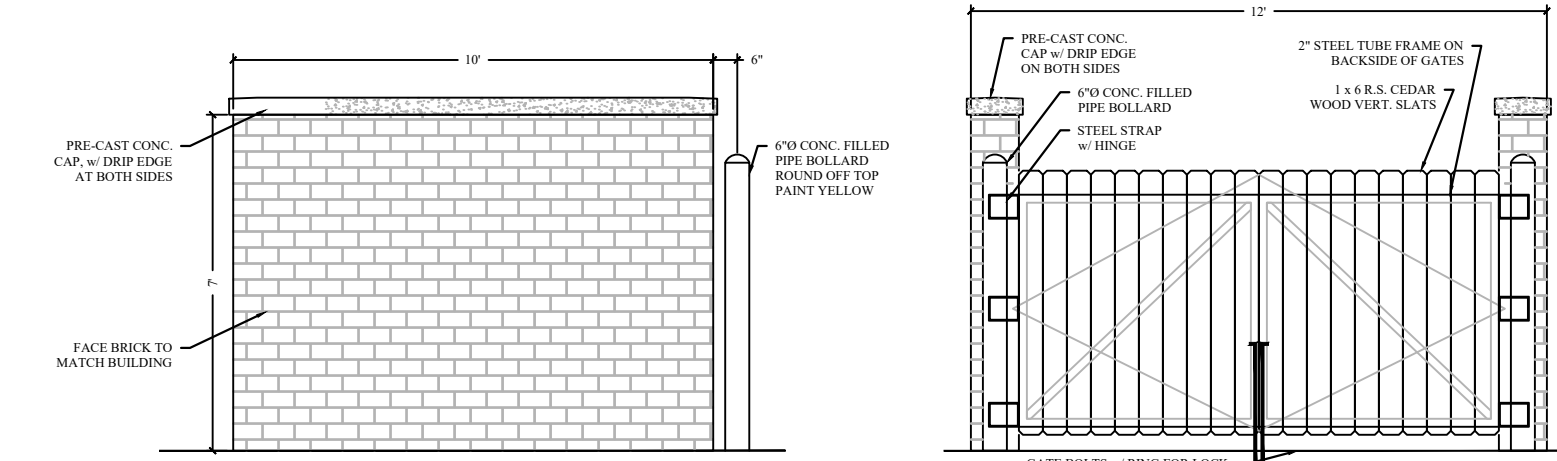
3 SOUTH BUILDING ELEVATION  
SCALE(36x24): 1/8"=1'-0"



2 WEST BUILDING ELEVATION  
SCALE(36x24): 1/8"=1'-0"



1 EAST BUILDING ELEVATION  
SCALE(36x24): 1/8"=1'-0"



5 DUMPSTER ELEVATIONS  
SCALE(36x24): 1/4"=1'-0"

REVISIONS  
1 06-07-2018 ADDED PER PZ REVIEW COMMENTS



*Lisa Crandall*  
ENGINEER  
DATE: 05-08-2018  
LISA MEEKER CRANDALL  
ILLINOIS REGISTRATION NO. 02.265006  
EXPIRES 11-30-2019

ENGINEERING THAT WORKS  
ENGINEERING WITH STYLE

**Crandall**  
ENGINEERING DESIGN  
1-800-977-0996 1-630-977-0997  
236 EAST MAIN STREET  
GAS CITY, IN 46033

CITIZENS FIRST NATIONAL BANK BUSINESS PARK-LOT 2  
AURORA, ILLINOIS 60503  
814 DEVELOPMENT  
1742 CROOKS ROAD  
TROY, MICHIGAN 48084  
RAINBOW CHILD CARE CENTER  
OCDEN AVENUE & FARNSWORTH AVENUE  
AURORA, IL 60503

DATE: 06-13-2018 PROJECT NO.: 2018-007  
DRAWN BY: AW / XC CHECKED BY: LMC

SHEET TITLE:  
ELEVATIONS

SHEET NO.:  
C202