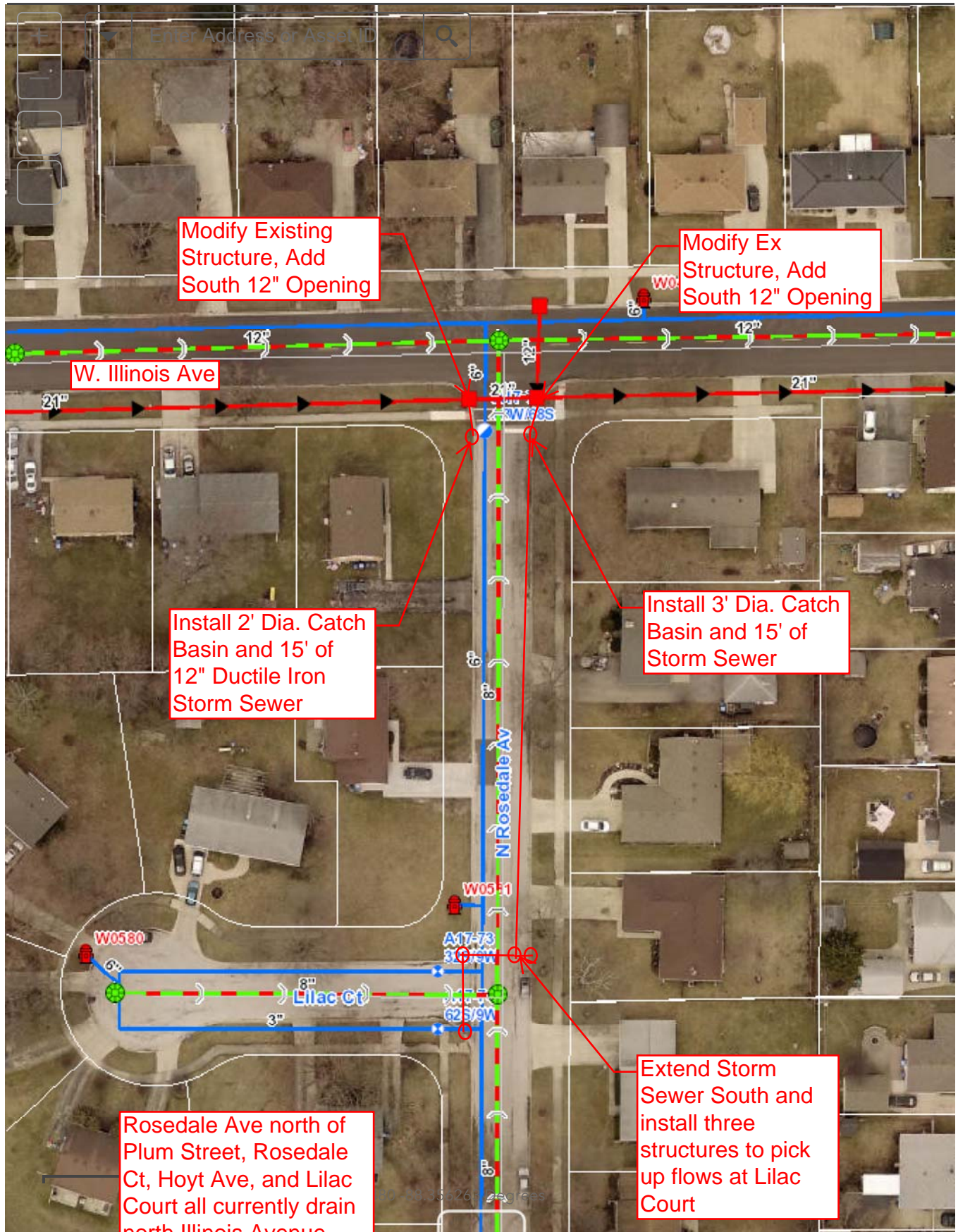


Rosedale Drainage Improvements



Engineering Final





**Engineer's Estimate
Rosedale Avenue Storm
Sewer Extension**

Route	Rosedale Avenue
County	Kane
Local Agency	City of Aurora

<u>NO.</u>	<u>ITEM</u>	<u>UNIT</u>	<u>QUANTITY</u>	<u>UNIT COST</u>	<u>AMOUNT</u>
1	Select Granular Trench Backfill	CY	90	\$25.00	\$2,250.00
2	Storm Sewer - 12" DIP	LF	370	\$75.00	\$27,750.00
3	Catch Basin, Ty B, 2' Dia.	EA	3	\$2,500.00	\$7,500.00
4	Infiltration Catch Basin, 3' Dia.	EA	2	\$5,000.00	\$10,000.00
5	Storm Manhole, Ty A, 4' Dia.	EA	1	\$4,500.00	\$4,500.00
6	Modify Existing Structure	EA	2	\$750.00	\$1,500.00
7	Class D Patching, 5" Binder & 1.5" Surface	SY	275	\$60.00	\$16,500.00
8	Long Side Water Service Replacement to B-box	EA	4	\$5,500.00	\$22,000.00
9	Detectable Warnings	SF	40	\$25.00	\$1,000.00
10	Sidewalk Removal and Replacement, 5"	SF	175	\$8.00	\$1,400.00
11	Combination PCC Curb and Gutter Removal and Replacement	LF	125	\$40.00	\$5,000.00
Engineer's Estimate for Making Entire Improvements =					\$99,400.00
10% Contingency =					\$9,940.00
Total Estimate =					\$109,340.00