

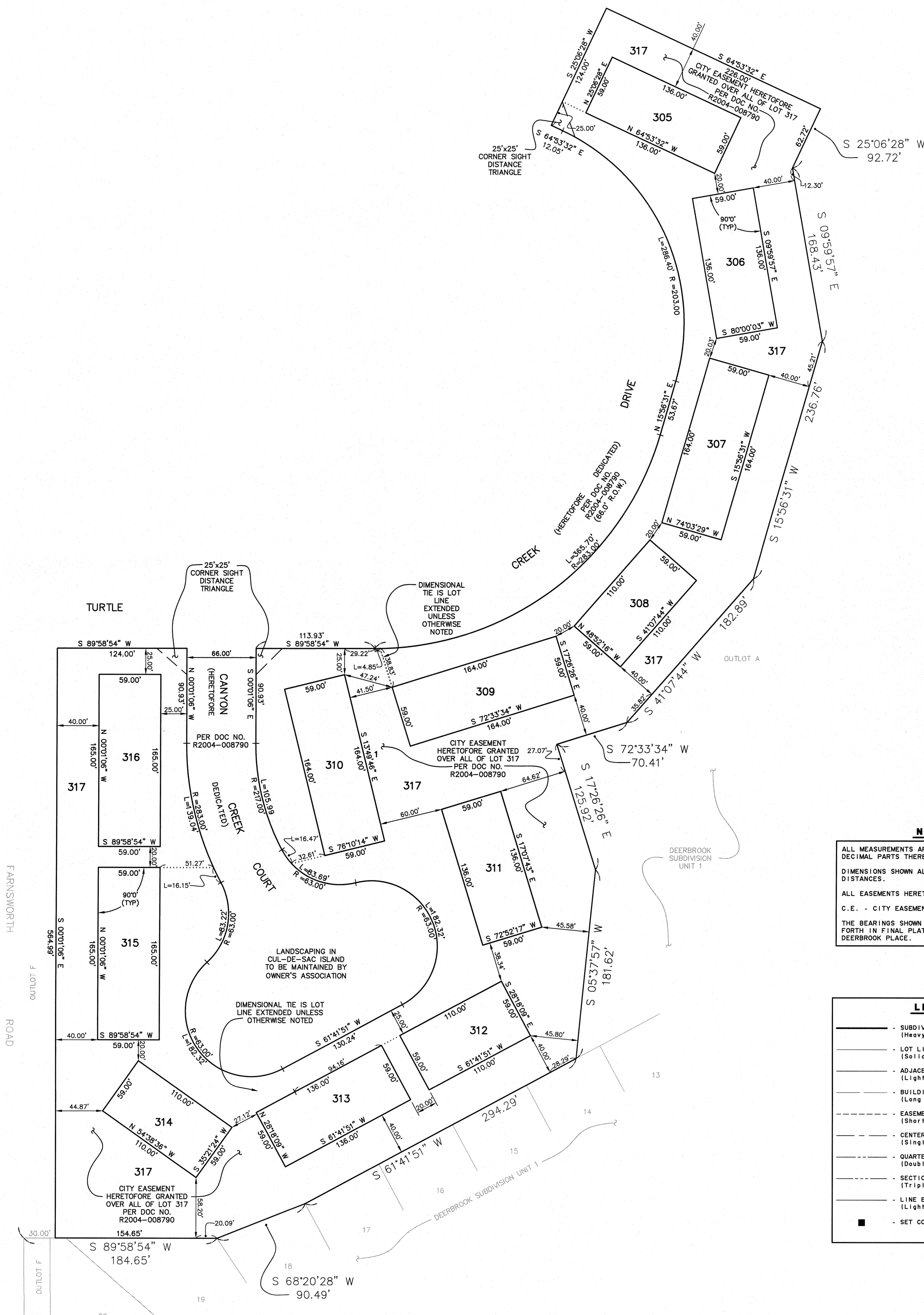
PLAT OF RECORD

SPECIAL NOTE
LOTS 305-316 (INCLUSIVE) ARE NOT INCLUDED

LOT 317 DEERBROOK PLACE BEING A SUBDIVISION OF PART OF THE NORTHEAST QUARTER OF SECTION 1, TOWNSHIP 37 NORTH, RANGE 8 EAST OF THE THIRD PRINCIPAL MERIDIAN, ACCORDING TO THE PLAT THEREOF RECORDED APRIL 12, 2004 AS DOCUMENT NO. 2004-0008790 IN KENDALL COUNTY, ILLINOIS.

AREA OF LOT 317 = 204,408 SQ. FT.

50 25 0 50
SCALE: 1" = 50'



NOTES

ALL MEASUREMENTS ARE SHOWN IN FEET AND DECIMAL PARTS THEREOF.

DIMENSIONS SHOWN ALONG CURVES ARE ARC DISTANCES.

ALL EASEMENTS HERETOFORE GRANTED TO REMAIN.

C.E. - CITY EASEMENT

THE BEARINGS SHOWN ARE BASED UPON THOSE SET FORTH IN FINAL PLAT OF SUBDIVISION OF DEERBROOK PLACE.

LEGEND

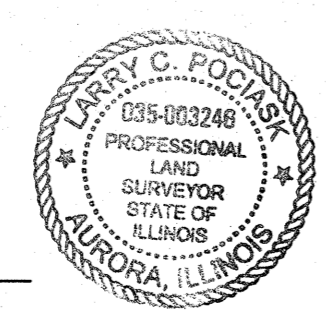
- SUBDIVISION BOUNDARY LINE (Heavy Solid Line)
- LOT LINE/PROPERTY LINE (Solid Line)
- ADJACENT LOT LINE/PROPERTY LINE (Light Solid Line)
- BUILDING LINE (Long Dashed Lines)
- EASEMENT LINE/LIMITS OF EASEMENT (Short Dashed Lines)
- CENTERLINE (Single Dashed Lines)
- QUARTER SECTION LINE (Double Dashed Lines)
- SECTION LINE (Triple Dashed Lines)
- LINE EXTENSION/DIMENSIONAL TIE (Light Dotted Line)
- - SET CONCRETE MONUMENT

SURVEYOR'S CERTIFICATE

STATE OF ILLINOIS) SS.
COUNTY OF DU PAGE)

I, LARRY C. POCIASK, AN ILLINOIS PROFESSIONAL LAND SURVEYOR, HEREBY STATE THAT THIS PLAT WAS PREPARED UNDER MY DIRECTION IN ACCORDANCE WITH THE PUBLIC RECORD.

DATED THIS 24TH DAY OF OCTOBER, 2016.



ILLINOIS PROFESSIONAL LAND SURVEYOR NO. 035-003246
MY REGISTRATION EXPIRES ON NOVEMBER 30, 2016
PROFESSIONAL DESIGN FIRM LICENSE NUMBER 184-002937
EXPIRES APRIL 30, 2017

PREPARED FOR:
JOE KEIM LAND CORPORATION
515 E. ROOSEVELT ROAD
WHEATON, ILLINOIS 60187
(630) 260-0500

Plat of Record		10-24-16/RP
Type of Survey	Date	Bk.-Pg. Date Drn. / By
Common Address : Outlot 317		
Client: Joe Keim Land Corporation		
Job No.: 7220.503-317	Scale: 1" = 20'	
File Name: RESUB DEERBROOK	Disc. No.: 464210P	
CEMCON, Ltd.		
Consulting Engineers, Land Surveyors & Planners 2280 White Oak Circle, Suite 100 Aurora, Illinois 60502-9875 Phone: 630-862-2100 Fax: 630-862-2199 Copyright © 2016 Cemcon, Ltd. All rights reserved.		

DRAWING PATH: V:\asmb\asmb\Temp\asmb\CEMCON SUBPLAT.dwg