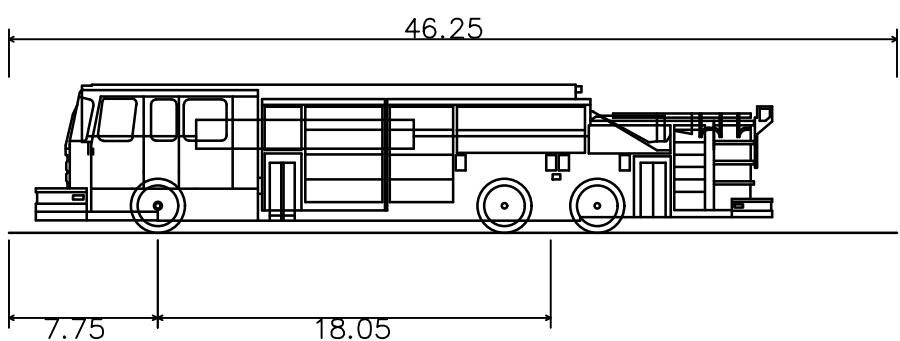
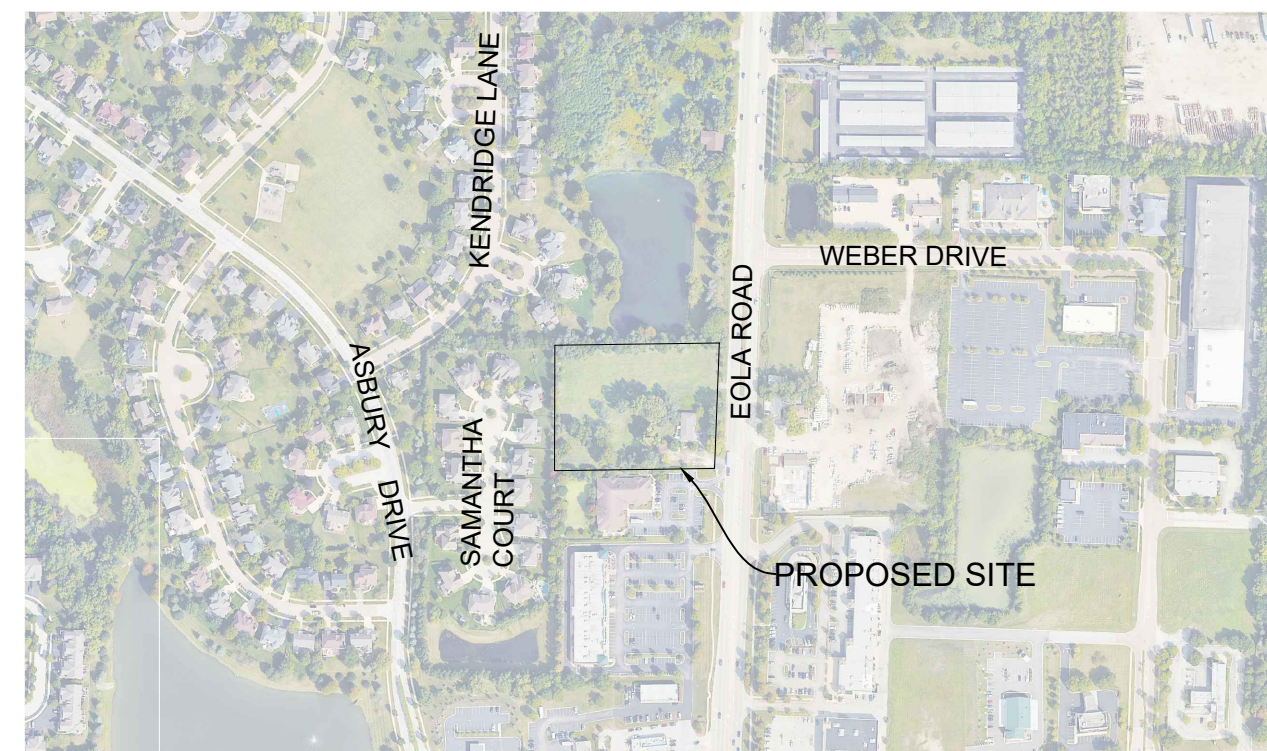


FINAL PLAN FOR FIRE STATION NO. 9 SUBDIVISION

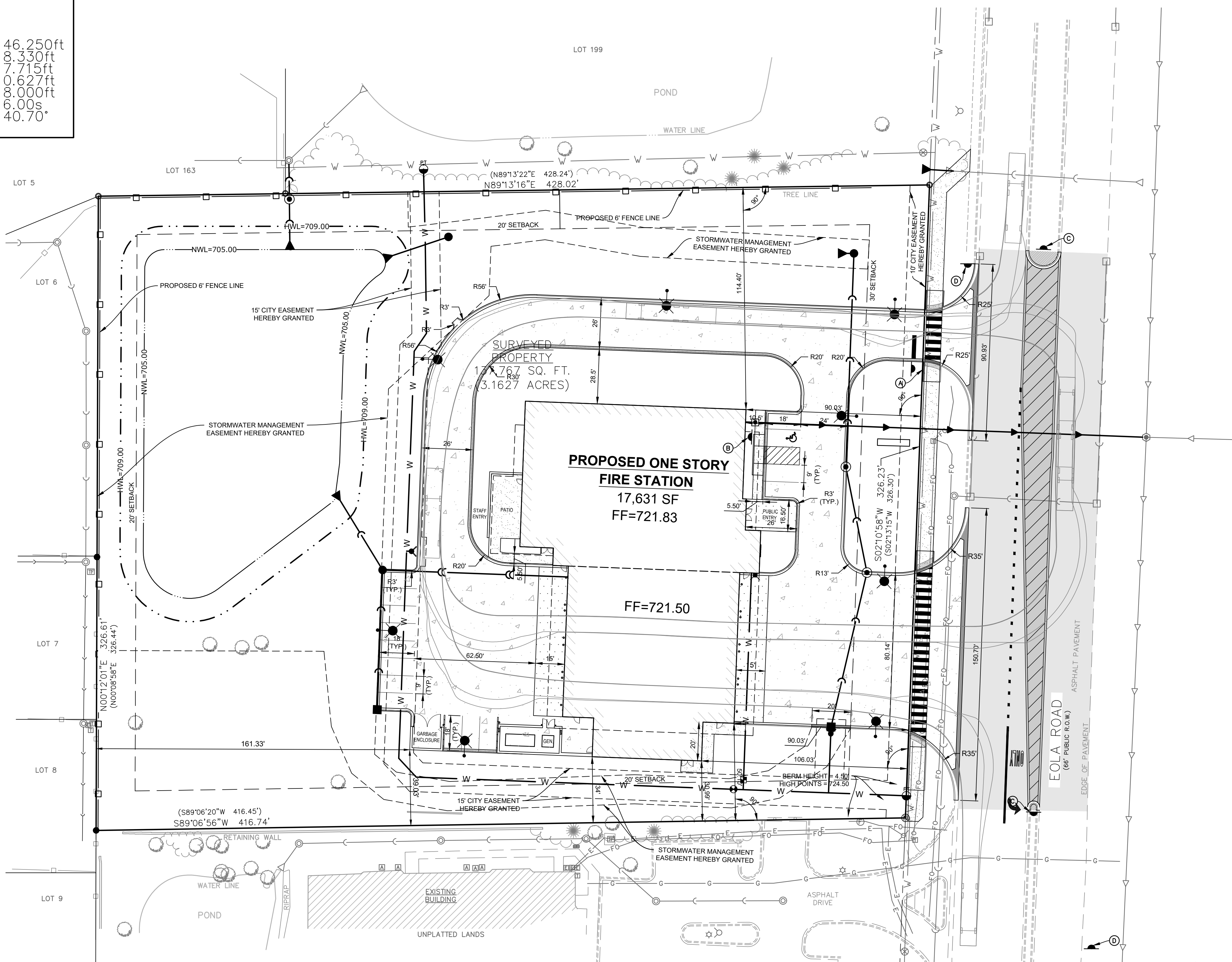


AURORA FIRE TRUCK
 Overall Length 46.250ft
 Overall Width 7.750ft
 Overall Body Height 18.050ft
 Min Body Ground Clearance 0.627ft
 Track Width 8.000ft
 Lock-to-lock time 6.00s
 Max Wheel Angle 40.70°



LOCATION MAP
 SCALE: 1"=500'

LEGEND	
EXISTING	PROPOSED
SANITARY MANHOLE	
STORM MANHOLE	
CATCH BASIN	
INLET	
PRECAST FLARED END SECTION	
CONCRETE HEADWALL	
VALVE VAULT	
VALVE BOX	
FIRE HYDRANT	
BUFFALO BOX	
CLEANOUT	
SANITARY SEWER	
FORCE MAIN	
STORM SEWER	
WATER MAIN	
UTILITY CROSSING	
GRANULAR TRENCH BACKFILL	
LIGHTING	
ELECTRICAL CABLE	
ELECTRICAL TRANSFORMER OR PEDESTAL	
POWER POLE	
POWER POLE WITH LIGHT	
GUY WIRE	
STREET SIGN	
GAS MAIN	
TELEPHONE LINE	
FIBER OPTIC LINE	
OVERHEAD WIRE	



LEGEND	
	CONCRETE PAVEMENT / APRON / TRASH AREAS
	8" PORTLAND CEMENT CONCRETE (NO FLY ASH, LOW CHERT MIX) WITH 2 LAYERS OF 6"x6" (W1.4 X W1.4) WWF
	4" COMPACTED CA-6 AGGREGATE BASE COURSE, TYPE B (WHERE CONCRETE APRON IS ADJACENT TO CURB AND GUTTER, CONTRACTOR SHALL INSTALL NO. 6 DEFORMED 18" LONG (NON EXPOXY) CURB TIE BARS @ 30" SPACING O.C.
PAVEMENT SECTION SHALL BE PER GEOTECHNICAL ENGINEERS RECOMMENDATION OR PER OWNERS SPECIFICATION	
	EOLA ROAD ASPHALT PAVEMENT MATCH EXISTING SECTION
	EOLA ROAD SURFACE MILLING RE-PAVE 1.5" HMA SURFACE COURSE, HMA, MIX D, N50, 12.5 MM NOMINAL SIZE, PG 64-22
	SIDEWALK 8" PORTLAND CEMENT CONCRETE THROUGH DRIVEWAY APRONS
	5" PORTLAND CEMENT CONCRETE ALL OTHER LOCATIONS
	4" COMPACTED CA-6 AGGREGATE BASE COURSE, TYPE B
	SNOW MELT PAVEMENT AND SIDEWALK

STRIPING/SIGNAGE LEGEND	
(A)	R1-1 STOP SIGN (30"X30")
(B)	R7-8 & R7-8P HANDICAP SIGN
(C)	R4-7C MEDIAN KEEP RIGHT SIGN
(D)	TS50 EMERGENCY VEHICLE WARNING SYSTEM (TBD)

SITE DATA	
TAX/PARCEL IDENTIFICATION NUMBER(S) (PINS):	07-20-102-015 & 07-20-102-016
LOT AREA:	137,767 SF. - 3.16 ACRES
DEVELOPED AREA:	124,664 SF. - 2.86 ACRES (90.5%)
UNDISTURBED LAND:	12,992 SF. - 0.30 ACRES (9.5%)
LOT COVERAGE	
BUILDINGS, PAVEMENT, AND	
DETENTION BASIN NWL:	65,956 SF. - 1.51 ACRES (47.9%)
OPEN SPACE/LANDSCAPING:	58,709 SF. - 1.35 ACRES (42.6%)
LAND USE:	FIRE STATION, PARKING, AND STORMWATER DETENTION
CAR PARKING:	15 PERPENDICULAR STALLS (INCLUDING 1 ADA STALL)
BUILDING(S):	1
STORY(IES):	1
BUILDING FOOTPRINT:	17,631 SF.
FAR:	0.13

PETITIONER: JIM BIRCHALL
 CHIEF PUBLIC FACILITIES OFFICER
 CITY OF AURORA
 44 E. DOWNER PLACE
 AURORA, IL 60505
 (630) 256-4636

8/14/2024 11:48 PM - Z:\Projects\2023\18792-00-1\600 - CAD\FINAL EXHIBITS\Final Plan For Fire Station No. 9 - CAD\FINAL EXHIBITS\Final Plan For Fire Station No. 9 - CAD\FINAL EXHIBITS\Final Plan For Fire Station No. 9
 DESIGNED: JAM
 DRAWN: JKB
 CHECKED: DAT
 APPROVED: JKB
 PINNACLE ENGINEERING GROUP
 IL DESIGN FIRM 184.006289-0010

www.pinnacle-engr.com
 AURORA FIRE STATION NO. 9 - 7S330 EOLA DRIVE - FINAL PLAN - SITE

PINNACLE ENGINEERING GROUP
 CHICAGO OFFICE: 1051 E. MAIN ST., SUITE 217, EAST DUNDEE, IL 60118 (847) 551-5300
 CHICAGO | MILWAUKEE | NATIONWIDE
 PLAN | DESIGN | DELIVER
 www.pinnacle-engr.com

FIRE STATION NO. 9 SUBDIVISION
7S330 EOLA DRIVE
AURORA, ILLINOIS

REVISIONS

FINAL PLAN
 SHEET **1** OF **1**
 REG. JOB NO. 1729-00-1L
 REG. PM. DAT
 START DATE 06/25/24
 SCALE 1"=30'
 COPYRIGHT 2023

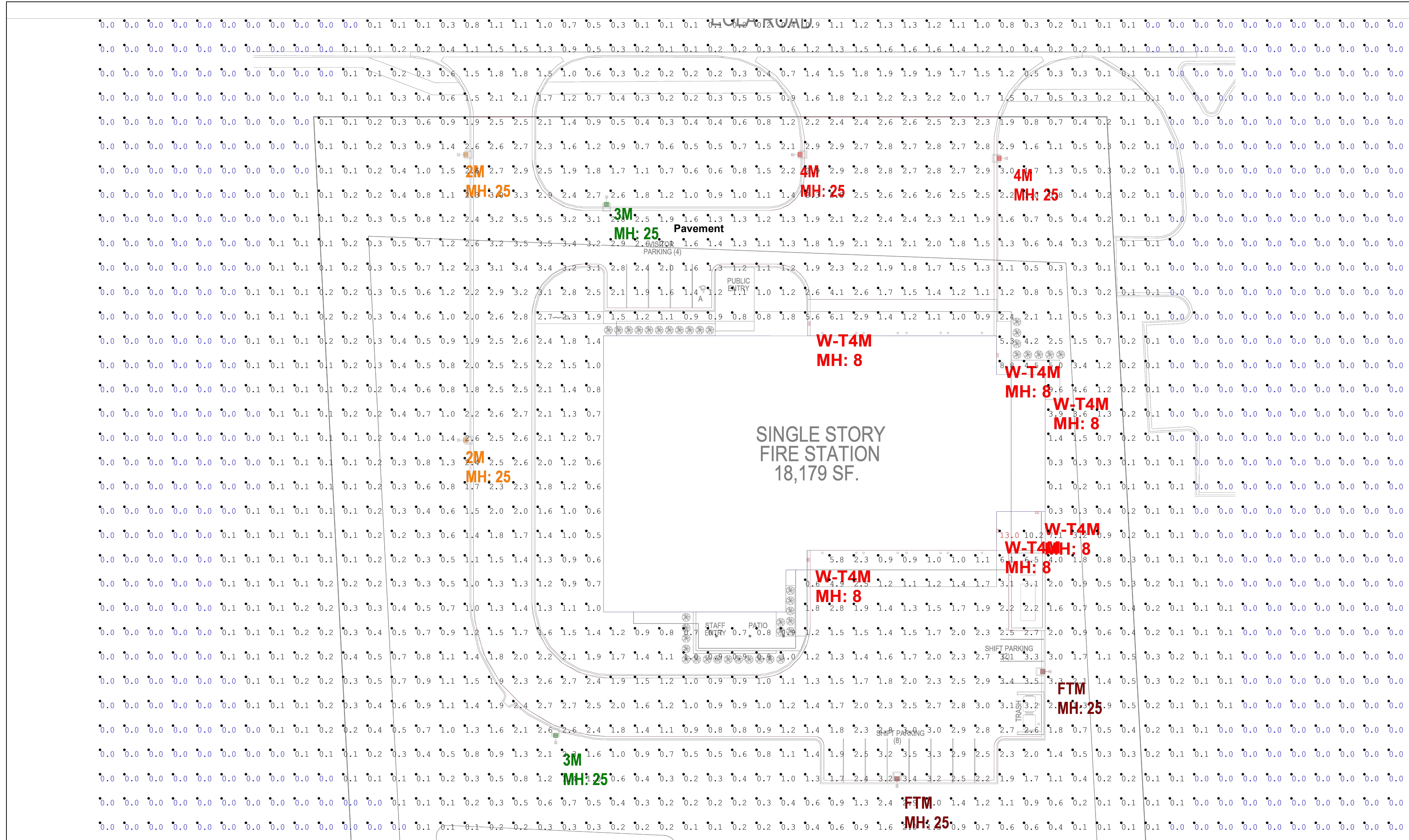
ISSUANCE		
NO	DATE	DESCRIPTION
1	07/29/2024	ISSUED FOR PERMIT

AURORA FIRE STATION NO. 09
CITY OF AURORA
EOLA ROAD, AURORA, ILLINOIS 60502

ISSUED FOR PERMIT

**ELECTRICAL SITE LIGHTING
PHOTOMETRIC PLAN**

SHEET NO.
EP1.0



1 | SITE PHOTOMETRIC PLAN
1" = 20'-0"

Luminaire Schedule							
Symbol	Qty	Label	LLF	Lumens	Watts	Description	[MANUFAC]
	2	2M	1.000	15847	123.94	DSX1 LED P4 40K 70CRI T2M	Lithonia Lighting
	2	3M	1.000	16031	123.94	DSX1 LED P4 40K 70CRI T3M	Lithonia Lighting
	2	4M	1.000	16270	123.94	DSX1 LED P4 40K 70CRI T4M	Lithonia Lighting
	2	FTM	1.000	16383	123.94	DSX1 LED P4 40K 70CRI TFTM	Lithonia Lighting
	6	W-T4M	1.000	4177	46.6589	WDGE2 LED P4 40K 80CRI T4M	Lithonia Lighting

Calculation Summary						
Label	Units	Avg	Max	Min	Avg/Min	Max/Min
CalcPts_1	Fc	0.48	13.0	0.0	N.A.	N.A.
Pavement	Fc	2.23	6.1	0.8	2.79	7.63

Notes :

1. Calculation Work Plane : Grade
2. Fixture Mounting Height : AS NOTED
3. Calculation Point Spacing : 10'x10'

**This document contains confidential and proprietary information of KSA Lighting & Controls. This document may only be used by or for the benefit of KSA Lighting & Controls representatives and customers. This lighting layout is not a professional engineering drawing and is provided for informational purposes only, without warranty as to accuracy, completeness, reliability or otherwise. KSA Lighting & Controls is not responsible for specifying the light fixtures or illumination requirements for any specific project, nor is it responsible for meeting municipal or building code requirements. It is the obligation of the end-user to consult with a professional engineering advisor to determine whether this lighting layout meets the applicable project requirements for lighting system performance, safety, suitability and effectiveness for use in a particular application. Field verification is recommended when calculations are based on end-user or customer-provided information. End-user environment and application (including, but not limited to, voltage variation and dirt accumulation) can cause actual field performance to differ from the calculated photometric performance represented in this lighting layout. In no event will KSA Lighting & Controls be responsible for any loss resulting from any use of this drawing.