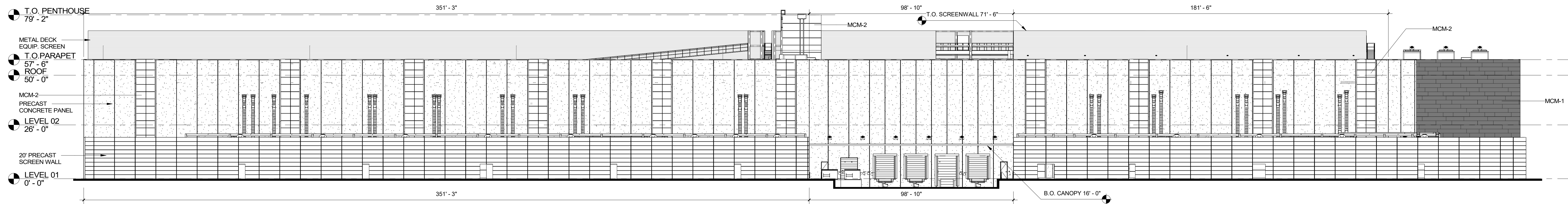
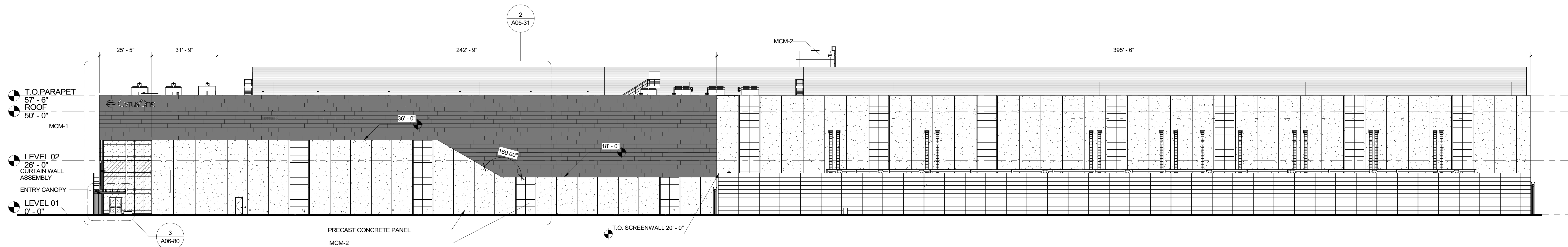


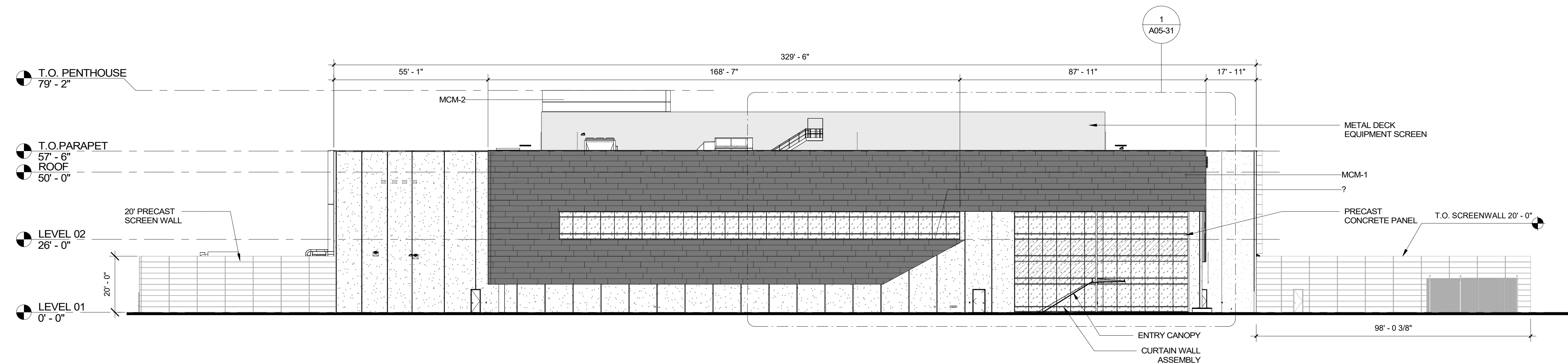
4 EXTERIOR ELEVATION - PLAN WEST
3/64" = 1'-0"



3 EXTERIOR ELEVATION - PLAN SOUTH
3/64" = 1'-0"



2 EXTERIOR ELEVATION - PLAN NORTH
3/64" = 1'-0"



1 EXTERIOR ELEVATION - PLAN EAST
3/64" = 1'-0"

	MATERIAL ARTICULATION				
	MATERIAL	GLAZING TRANSPARENT VS OPAQUE	PRIMARY BUILDING MATERIAL	METAL PANEL TYPE 1 BUILDING ENVELOPE SYSTEM	METAL PANEL TYPE 2 SCUPPER ENCLOSURES
NORTH					
TOTAL:	40,310 SF	861 SF (2%)	25,714 SF (64%)	9,945 SF (25%)	3,780 SF (10%)
SOUTH					
TOTAL:	40,727 SF	0 SF (0%)	32,671 SF (80%)	2,848 SF (7%)	5,208 SF (13%)
WEST					
TOTAL:	19,801 SF	0 SF (0%)	18,941 SF (46%)	860 SF (4%)	0 SF (0%)
EAST					
TOTAL:	19,833 SF	3,676 SF (19%)	6,990 SF (35%)	9,167 SF (46%)	0 SF (0%)
TOTAL					
TOTAL:	120,671 SF	4,537 SF (4%)	84,316 SF (70%)	22,820 SF (19%)	8,998 SF (7%)