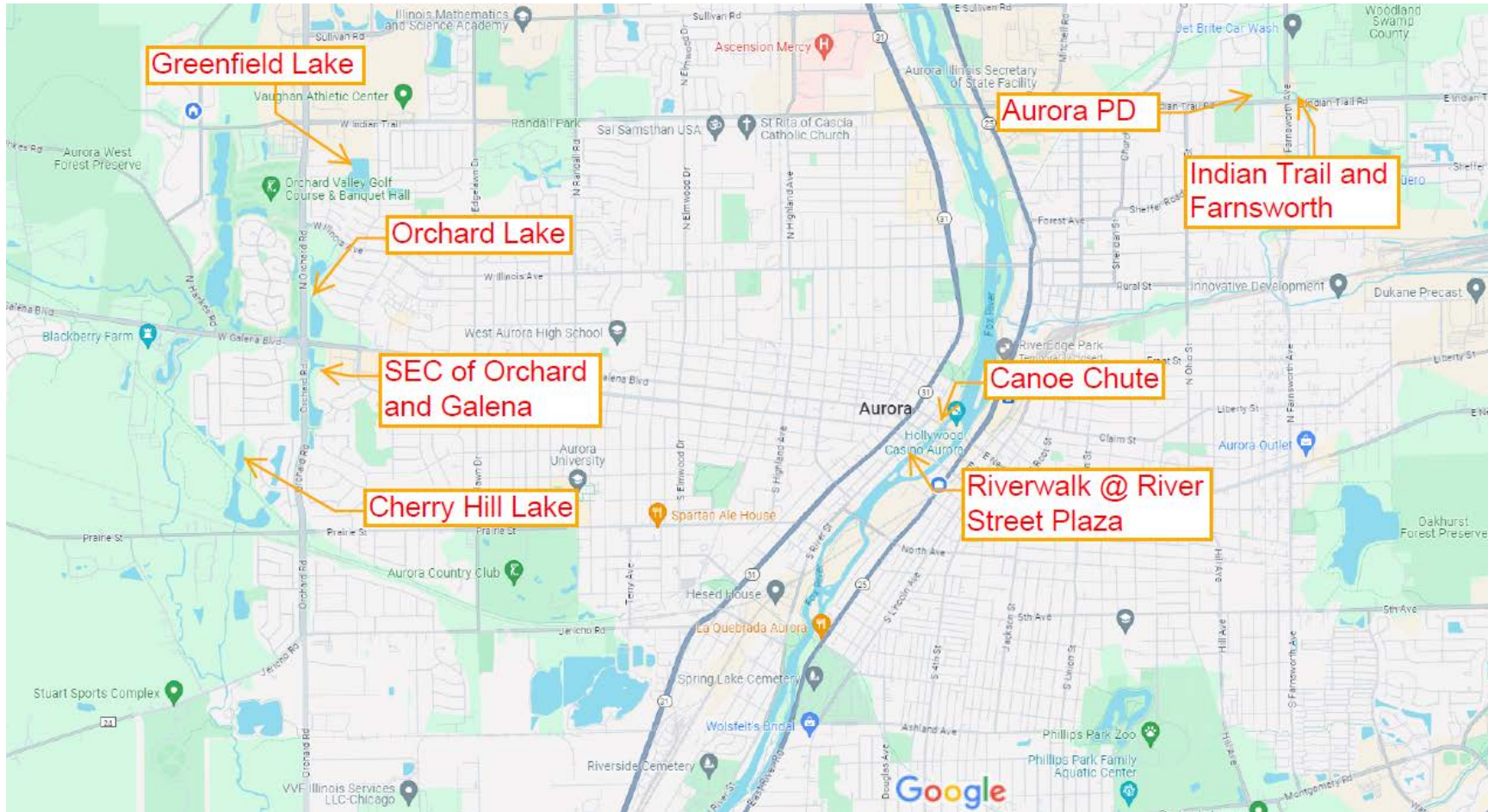


# Locations Map

## Native Plantings Landscaping Maintenance 2024 (24-064)



Cherry Hill Lake Work Plan  
2016 Maintenance Activities



Cherry Hill Lake:  
Area in Yellow to be Serviced = 12.0 Acres



ORCHARD ROAD

8.4 ac

ORCHARD LAKE NORTH

2.0 ac

ORCHARD LAKE SOUTH

Work Area (10.4 ac)

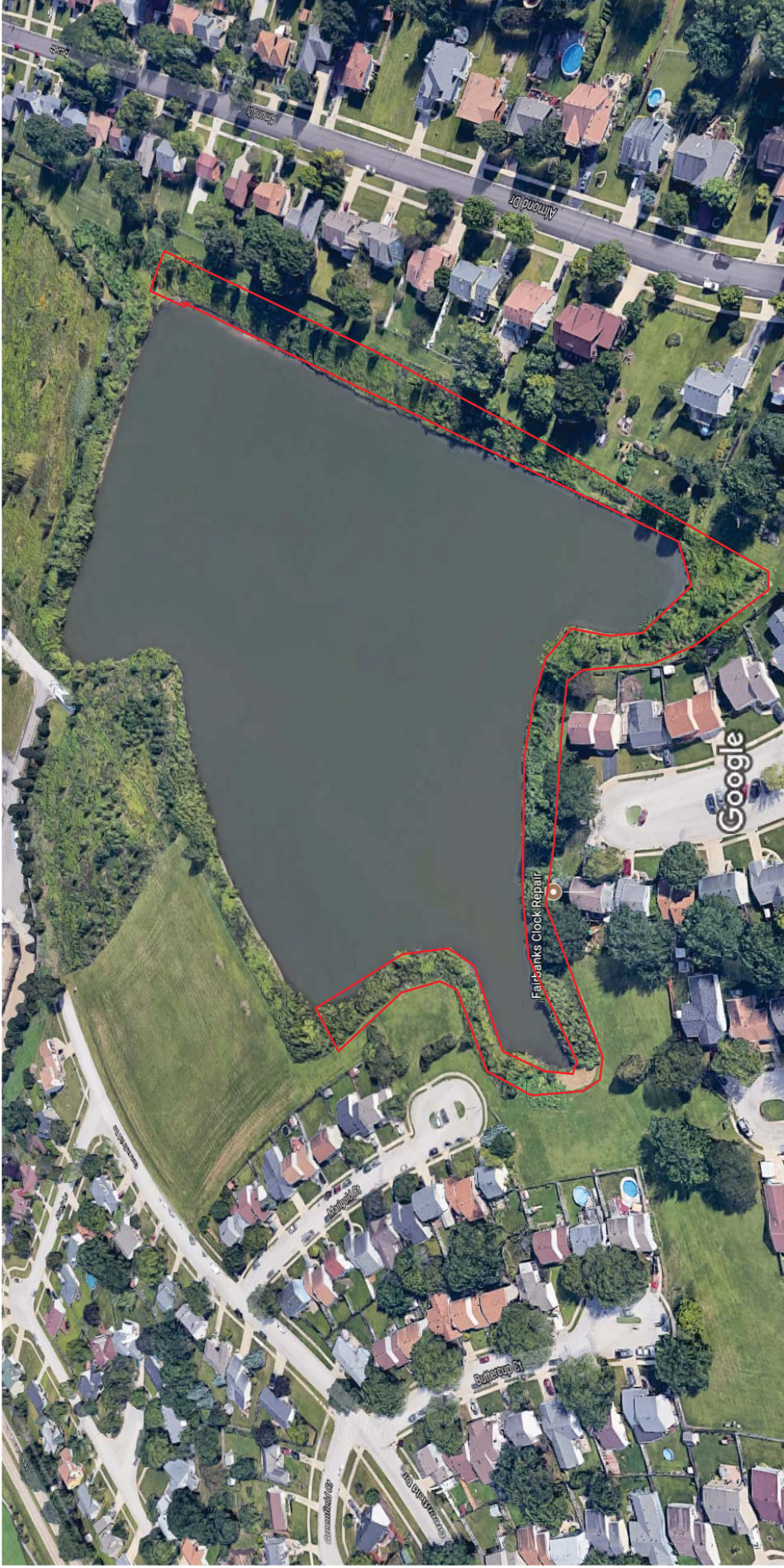
GALENA BLVD

NORTH

Orchard Lake - 10.4 acres

City of Aurora  
Engineering Division  
March 2016

Greenfield Lake: Approximately 2.0 acres



SEC of Orchard and Galena

Approximately 3.5 Acres



Imagery ©2018 Google, Map data ©2018 Google 200 ft

**Indian Trail and Farnsworth: Approximately 1.3 acres**



Imagery ©2018 Google, Map data ©2018 Google 20 ft

Approximately 10.1 acres

Aurora Police Department



Imagery ©2018 Google, Map data ©2018 Google 100 ft

Riverwalk behind River Street Plaza @ Benton St - approximately 2.5 acres





Canoe Chute - Less than 1 acre

