

Full Length Liner after Heavy Cleaning

Pipe Section Number	From MH	To MH	Diameter (in)	Sewer Length (ft)	Ward
1	17-118B	17-118	8	226	7
2	26-13-10	26-13-11	8	275	5
3	26-13-11	26-13-134	8	302	5
4	29-8-120	29-8-122B	8	±252	6
5	12-D-164	12-D-165	20	380	4
6	7-B-332	7-B-331	8	180	7
7	7-B-331	7-B-329	10	271	7
8	7-B-329	7-B-328	12	326	7
9	7-B-328	7-B-327	12	331	7
10	7-B-327	7-B-277	18	329	7
11	7-B-347A	7-B-346	8	281	7
12	7-B-346	7-B-353	10	282	7
13	7-B-354	7-B-353	30	306	7
14	7-B-353	7-B-352	30	262	7
15	7-B-173	7-B-174	10	290	7
16	8-372	8-020	8	339	7
17	7-B-172	7-B-171	10	332	7
18	05-145C	05-144C	9	395	2
19	7-B-237	7-B-236	10	309	2
20	7-B-218	7-B-219	12	333	2
21	7-B-191	7-B-192	12	314	2
22	7-B-190	7-B-163	8	272	2
23	3-C-161B	3-C-161	9	292	4
24	3-C-135	3-C-140	24	407	4
25	29-8-99A	29-8-99	8	24	6
26	29-8-39	29-8-37	8	89	6
27	29-8-13	29-8-26	8	297	6
28	29-8-26A	29-8-27	8	236	6
29	29-8-107A	29-8-107	8	366	6
30	12-8-340A	12-8-340	12	143	6
31	12-8-339	12-8-338	15	360	6
32	12-8-84A	12-8-339	12	296	6
33	29-8-28	29-8-40	8	300	6
34	12-A-65	12-A-66	10	310	4
35	12-A-114	12-A-113	8	84	4
36	12-A-12	12-A-11	8	282	4
37	12-A-11	12-A-6	12	287	4
38	12-A-5	12-A-6	20	345	4
39	9-B-7	9-B-37	10	431	1
40	27-11-144A	27-11-144	8	329	5
41	3-C-060	3-C-062	15	330	4
42	17-047	14-046	8	199	7

Full Length Liner after Heavy Cleaning					
Pipe Section Number	From MH	To MH	Diameter (in)	Sewer Length (ft)	Ward
43	14-046	17-045	8	332	7
44	7-B-314	7-B-303	18	343	7
45	7-B-303	7-B-301	24	298	7
46	11-D-108	11-D-97A	18	272	4
47	29-184	29-183	14	204	6
48	29-183	29-182	14	266	6
49	29-182	29-181	14	255	6
50	29-181	29-180A	14	140	6
51	29-180A	29-180	14	111	6
52	29-180	29-179	14	58	6
53	05-113C	05-107C	22	326	2
54	3-C-025	Blind Tie	10	398	4
55	9-B-116A	9-B-116	8	298	1
56	9-B-116	9-B-115A	8	312	1
57	9-B-115	9-B-114	8	336	1
58	9-B-34	9-B-26A	8	142	1
59	9-B-26A	9-B-26	8	264	1
60	9-B-26	9-B-28	15	302	1
61	9-B-72	9-B-71	8	376	1
62	9-B-114	9-B-118	8	390	1
63	9-B-118	9-B-119	8	399	1
64	9-B-79	9-B-80	10	388	1
65	9-B-24	9-B-23	8	221	1
66	9-B-20	9-B-9A	9	282	1
67	9-B-9A	9-B-9	10	203	1
68	9-B-82	9-B-83	8	587	1
69	9-B-27	9-B-26	10	201	1
70	9-B-57	9-B-58	10	398	1
71	9-B-69	9-B-122	12	273	1
72	9-B-124	9-066	12	109	1
73	9-B-8	9-B-10	30	307	1
74	9-B-10	9-B-11	30	382	1
75	9-B-11	9-B-12	20	193	1
76	9-B-15A	Chamber	24	344	1
77	10-1028C	10-1027C	8	299	4
78	15-1070	15-1069	8	182	3
79	15-1026	15-1027	8	204	3
80	15-1090	15-1089	8	342	3
81	15-1086	15-1085	8	340	3
82	15-1048	15-1046	8	160	3
83	15-1091	15-3C	12	32	3
84	22-15-7F	22-15-7E	8	231	5

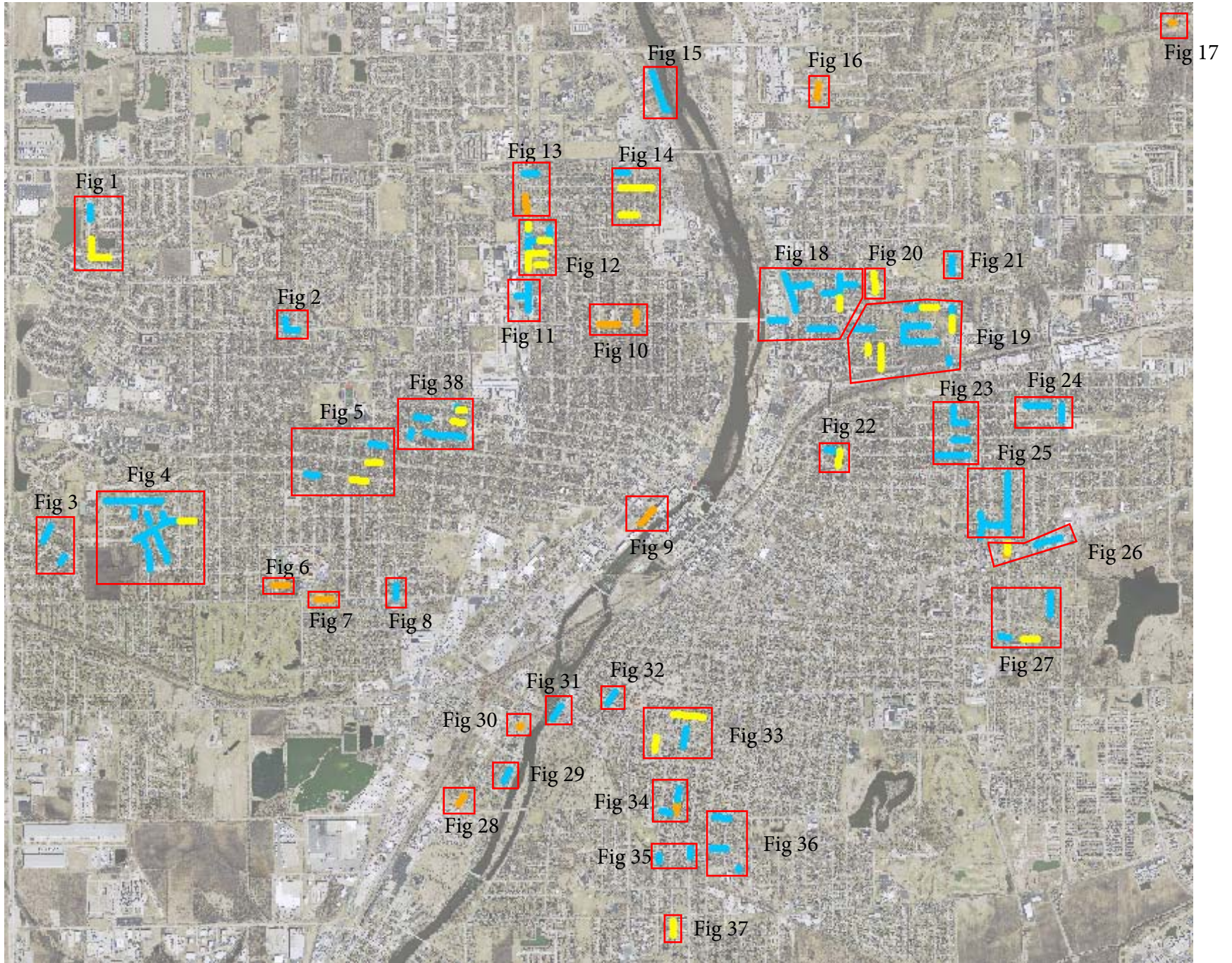
Full Length Liner after Heavy Cleaning					
Pipe Section Number	From MH	To MH	Diameter (in)	Sewer Length (ft)	Ward
85	22-15-7D	22-15-7C	8	97	5
86	22-15-7C	22-15-7B	8	368	5
87	22-15-7B	22-15-7E1	8	127	5
88	22-15-7E1	22-15-7	8	252	5
89	22-15-8	22-15-9	8	221	5
90	22-15-2	22-15-3	8	203	5
91	22-15-6D	22-15-6B	8	187	5
92	22-15-6B	22-15-6C	8	223	5
93	22-15-6A	22-15-6	8	226	5
94	22-15-10B	22-15-10	10	323	5
95	22-15-10	22-15-1	10	316	5
96	22-15-1	22-15-57A	12	355	5
97	22-15-57A	22-15-57	12	357	5
98	BULKHEAD	22-15-7H	10	201	5
99	22-15-7H	22-15-7E	10	142	5
100	22-15-7E	22-15-7G	10	175	5
101	22-15-7	22-15-6	10	349	5
102	22-15-6	22-15-58B	10	173	5
103	22-16-43	22-16-42	8	179	5
104	22-16-35A	22-16-9A	8	389	5
105	12-A-4A	Blind Tie-in	8	156	4
106	1-428	1-429	15	325	4

Pressure Test & Grout following Heavy Cleaning

Pipe Section Number	From MH	To MH	Diameter (in)	Sewer Length (ft)	Ward
1	17-116	17-054	8	335	7
2	29-8-53	29-8-54	8	375	6
3	29-8-71	29-8-72	8	375	6
4	29-8-72	29-8-73	8	397	6
5	11-D-166	11-D-163	8	296	4
6	11-D-161	11-D-143	8	355	4
7	7-B-335	7-B-336	8	235	7
8	3-C-129	3-C-128	10	345	4
9	3-C-127	3-C-128	10	395	3
10	29-8-99	29-8-39	8	117	6
11	29-8-03	29-8-02	8	206	6
12	29-8-15	29-8-14	8	207	6
13	29-8-14	29-8-13	8	207	6
14	29-8-87	29-8-01	8	98	6
15	29-8-01	29-8-13	8	297	6
16	29-8-27	29-8-28	8	260	6
17	12-A-69	12-A-68	8	257	4
18	12-A-117	12-A-114	8	145	4
19	27-14-76L	27-14-76E	8	395	5
20	27-14-76Q	27-14-76P	8	244	5
21	27-14-76P	27-14-76N	8	129	5
22	11-15-12	11-D-9	10	345	5
23	05-119C	05-113C	9	324	2
24	3-C-144	3-C-144A	12	297	4
25	9-B-71	9-B-70	8	369	1
26	9-B-107	9-B-108	8	545	1
27	9-B-106	9-B-106A	10	184	1
28	9-B-7	9-B-37	10	431	1
29	9-B-28	9-B-29	15	303	1
30	9-B-122	9-B-121	12	284	1
31	15-1043	15-1042	8	320	3

Heavy Cleaning Only					
Pipe Section Number	From MH	To MH	Diameter (in)	Sewer Length (ft)	Ward
1	7-B-336	7-B-337	8	64	7
2	3-C-161A	3-C-161B	9	288	4
3	29-8-99C	29-8-99B	8	374	6
4	27-14-76N	27-14-76S	8	66	5
5	14-A-279	14-A-267	18	443	6
6	31-1034	31-1033	8	132	1
7	14-A-253	14-A-252	10	299	6
8	10-1063C	10-1062C	12	358	4
9	10-1044C	10-1040C	10	373	4
10	22-15-7G	22-15-7	10	171	5
11	34-029	34-028	8	72	1
12	1-409B	1-409	8	246	4
13	1-419	Interceptor	18	46	4
14	13-057C	13-052C	24X36	488	6

SANITARY SEWER HEAVY CLEANING LOCATION MAPS



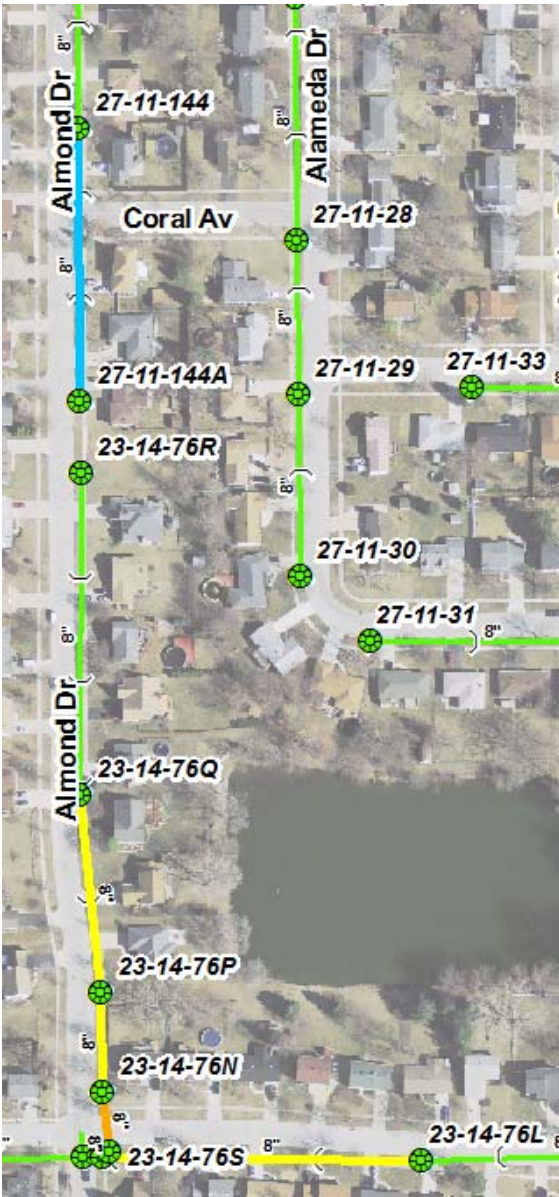


Figure: 1



Figure: 2

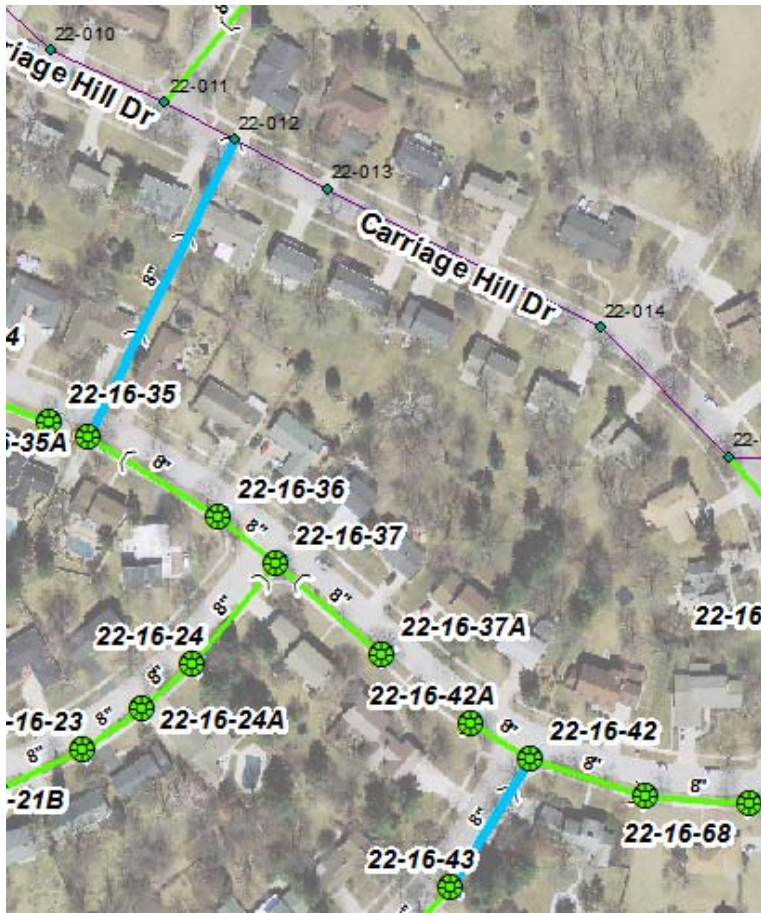


Figure: 3

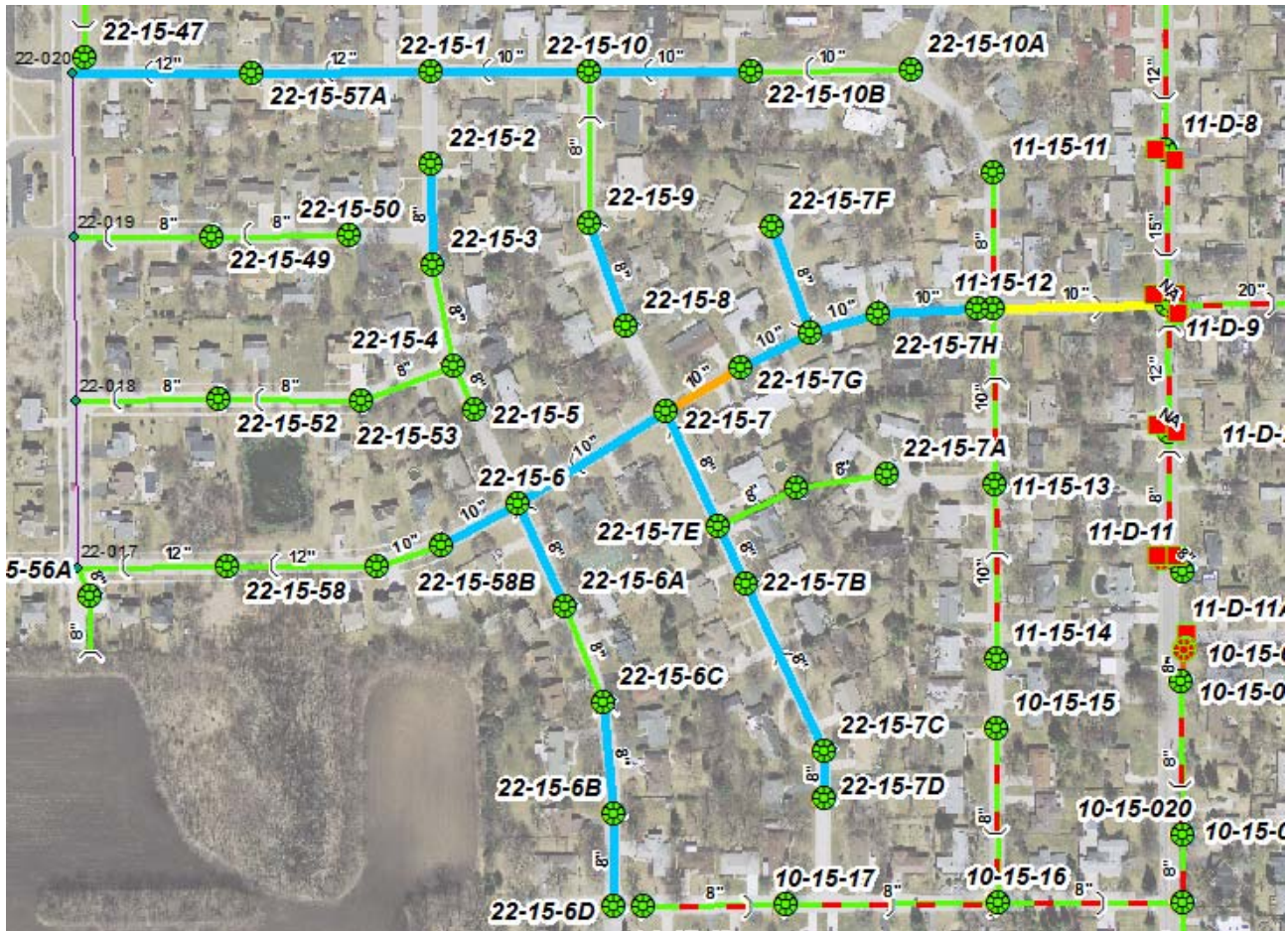


Figure: 4

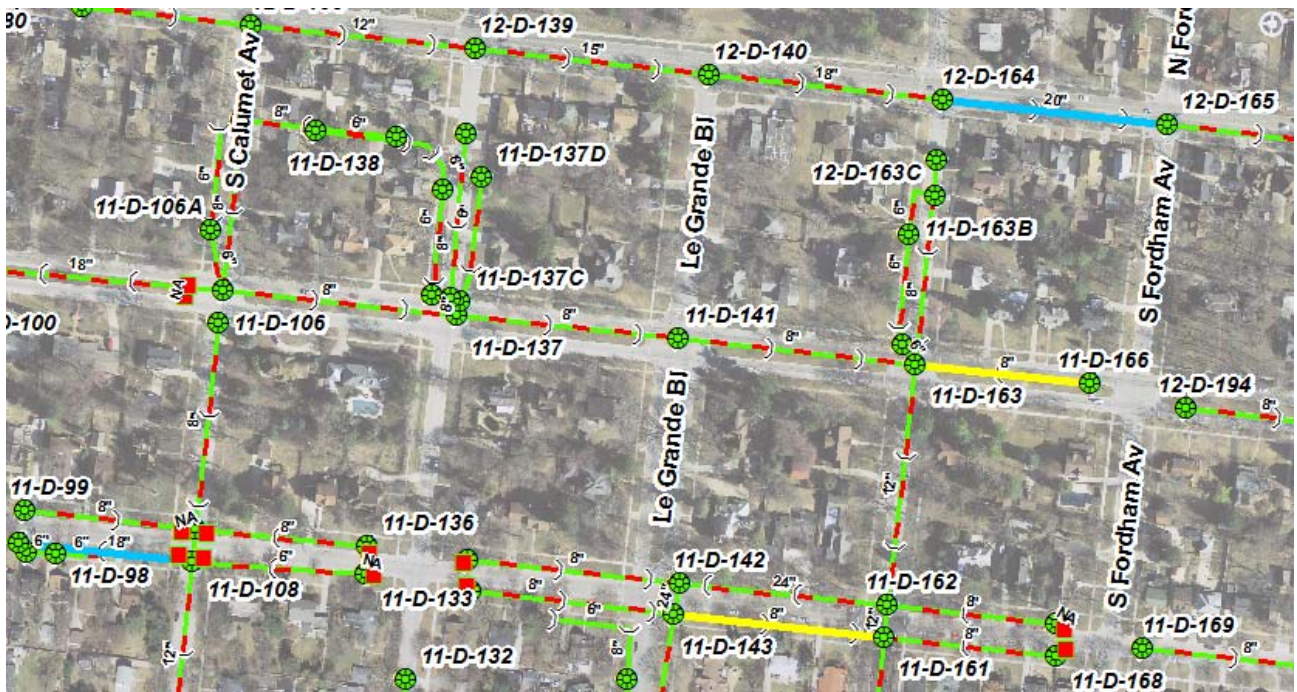


Figure: 5



Figure: 6

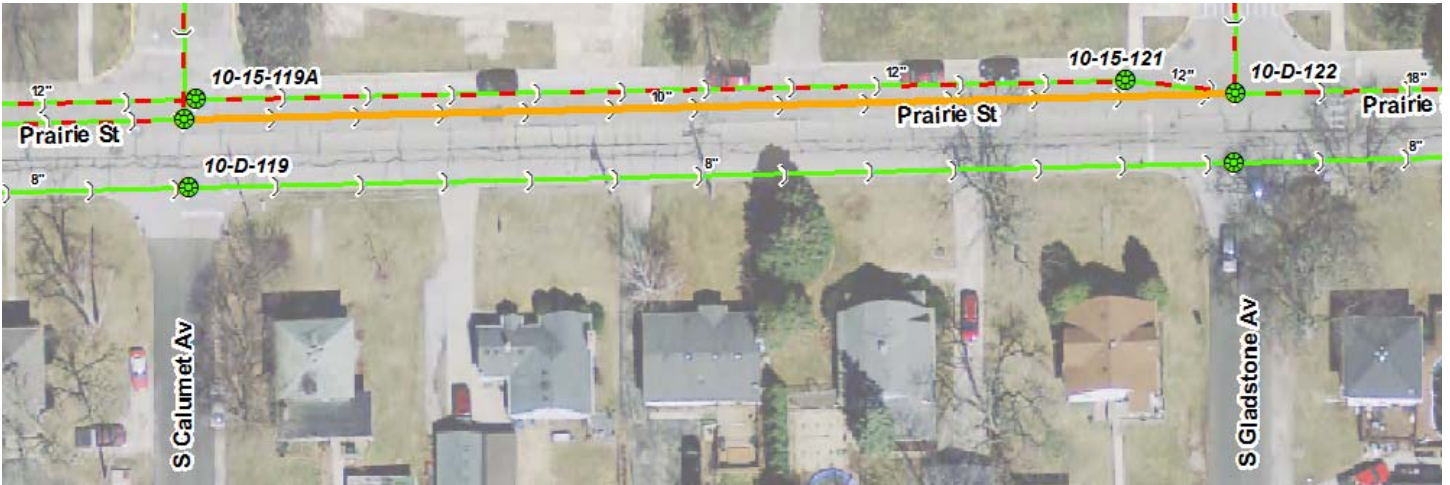


Figure: 7

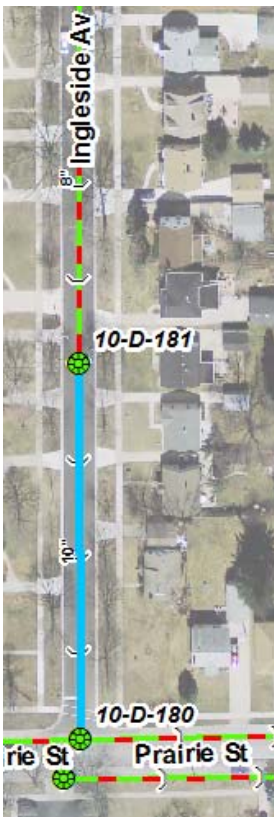


Figure: 8



Figure: 9

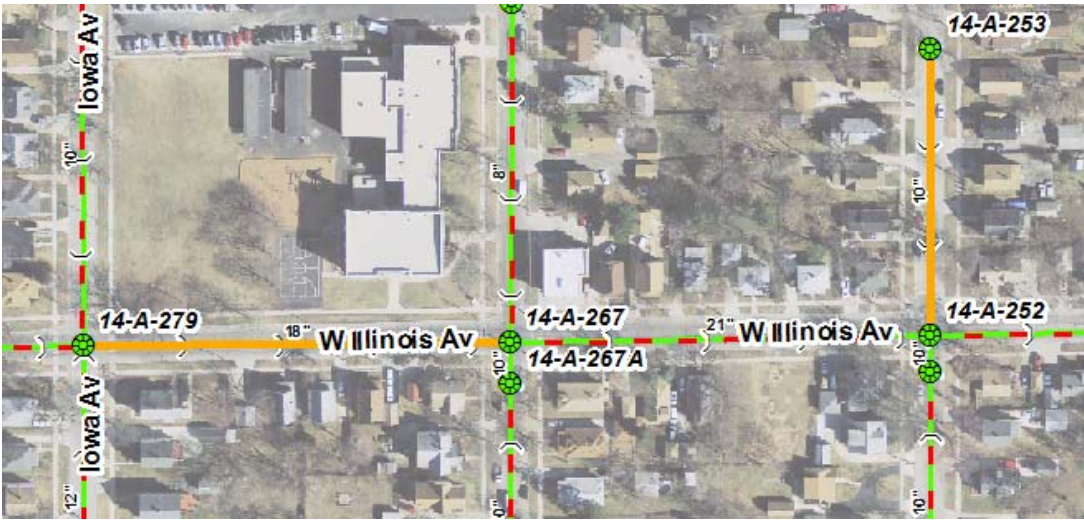


Figure: 10



Figure: 11

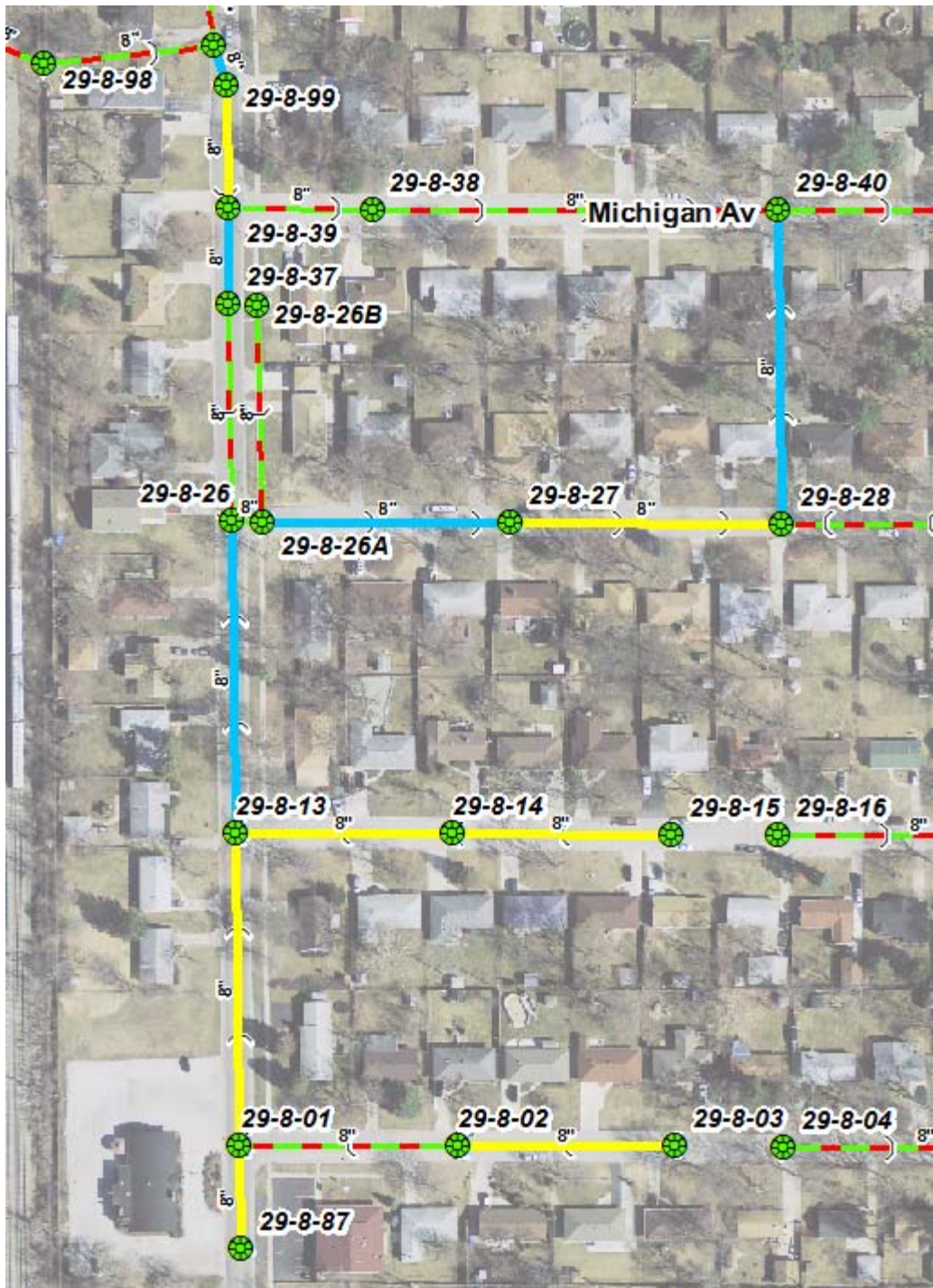


Figure: 12



Figure: 13

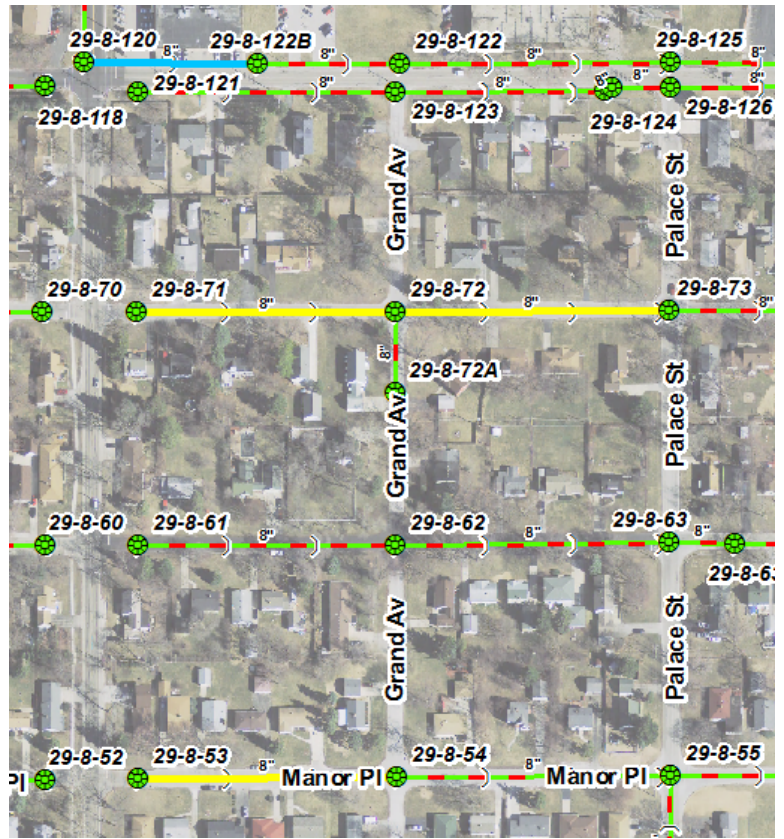


Figure: 14



Figure: 15



Figure: 16

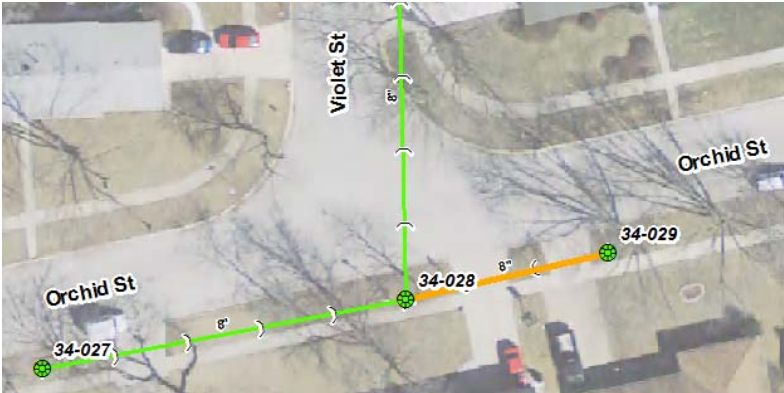


Figure: 17

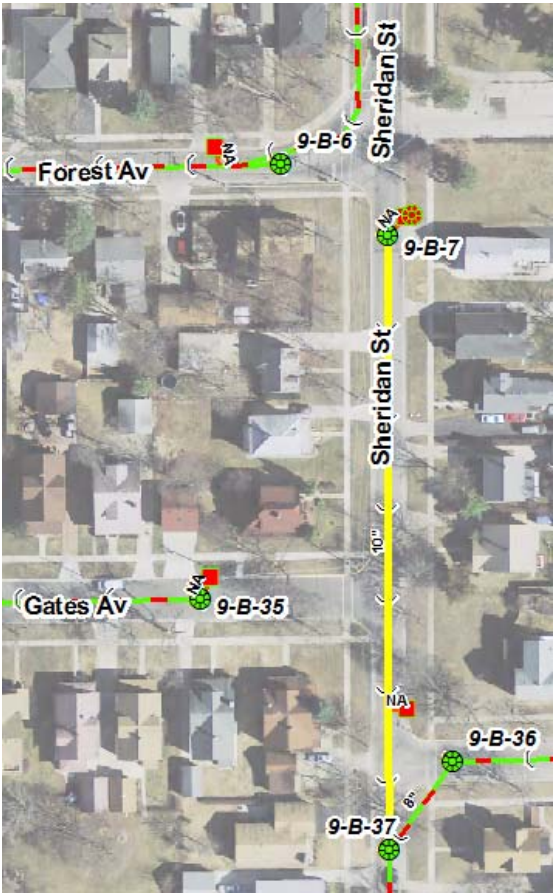


Figure: 20

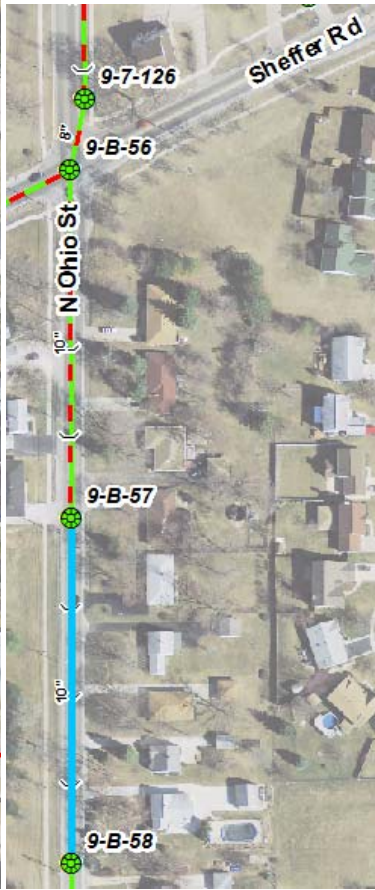


Figure: 21



Figure: 22

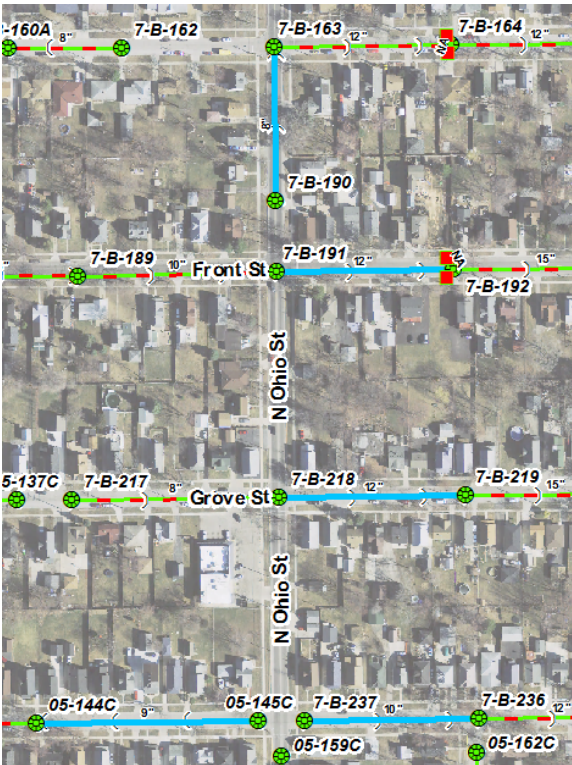


Figure: 23



Figure: 24

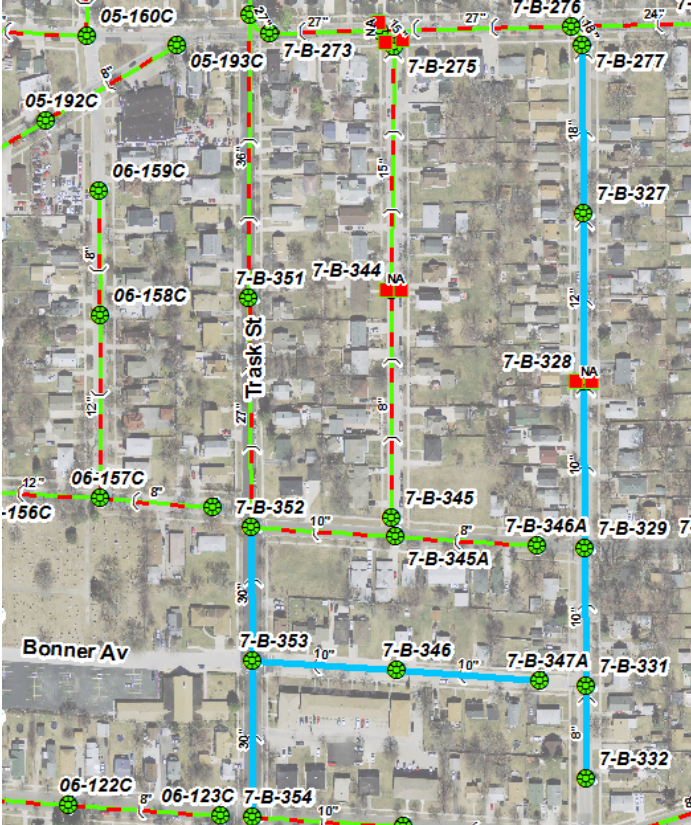


Figure: 25



Figure: 26

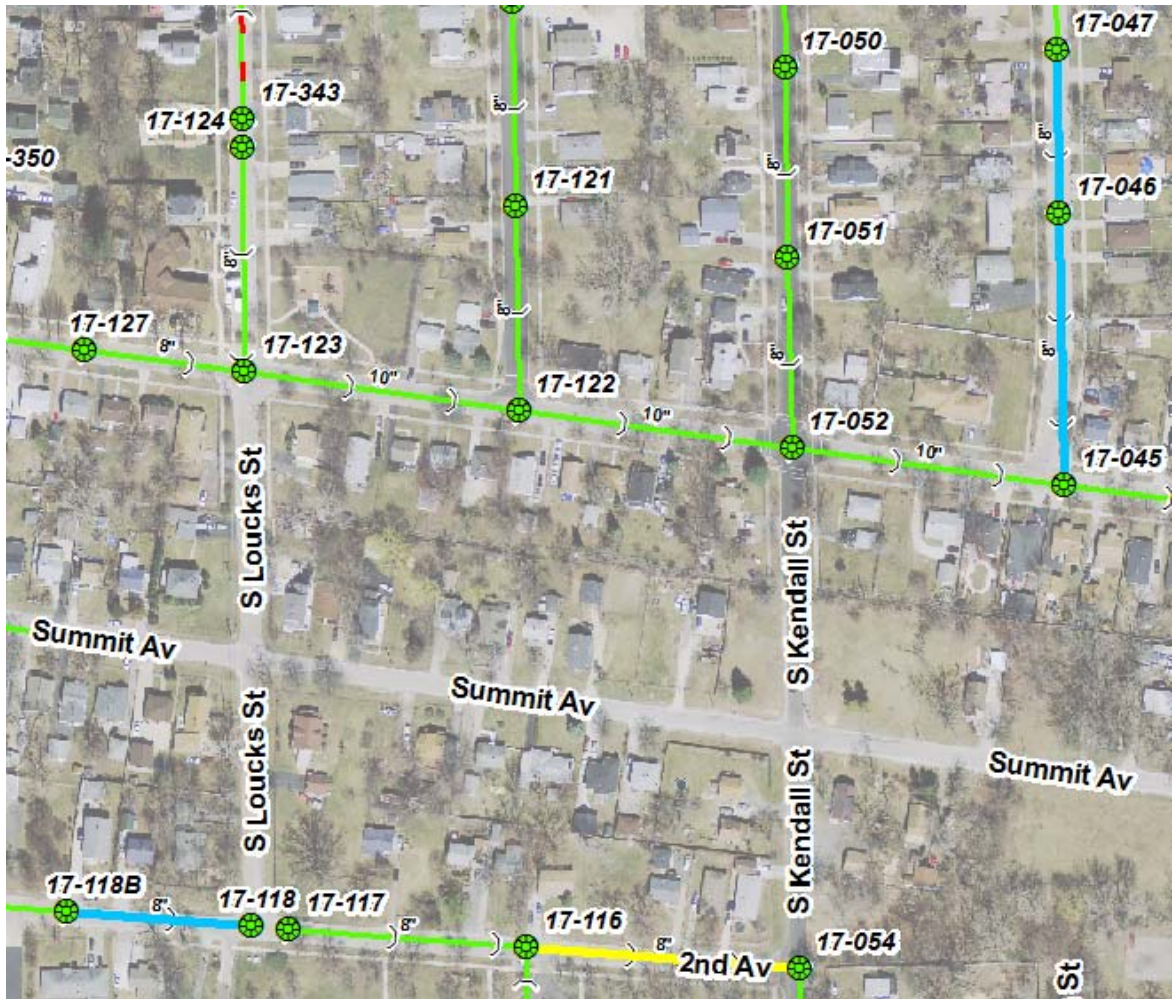


Figure: 27

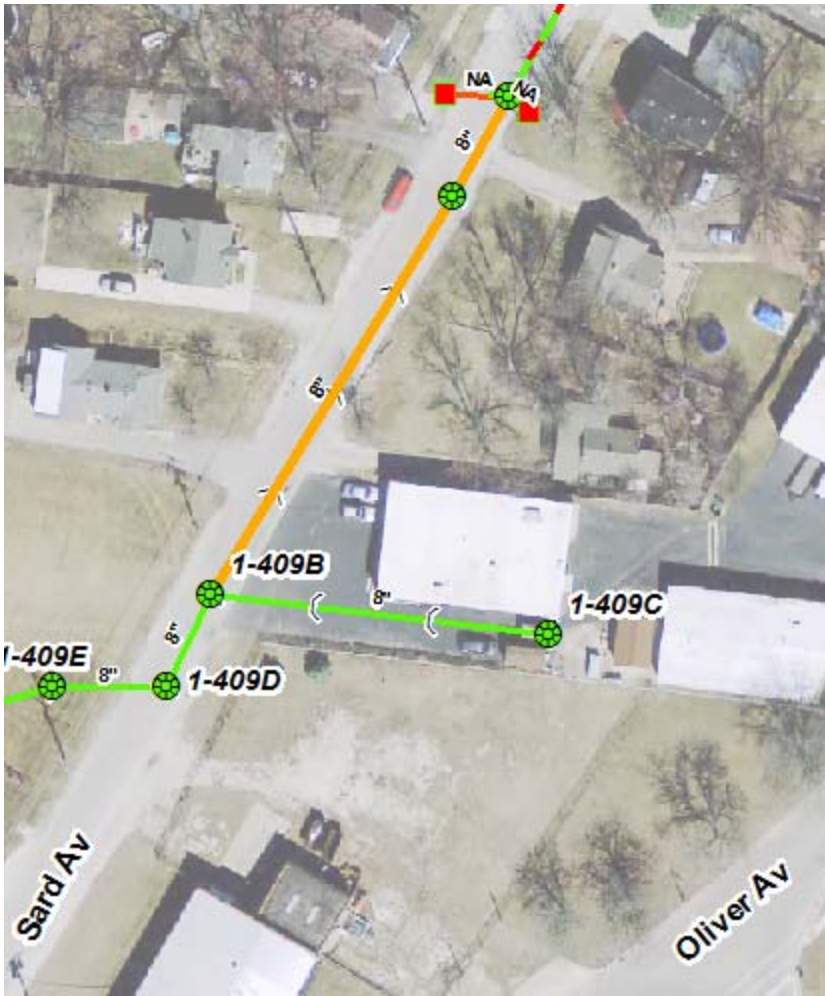


Figure: 28



Figure: 29

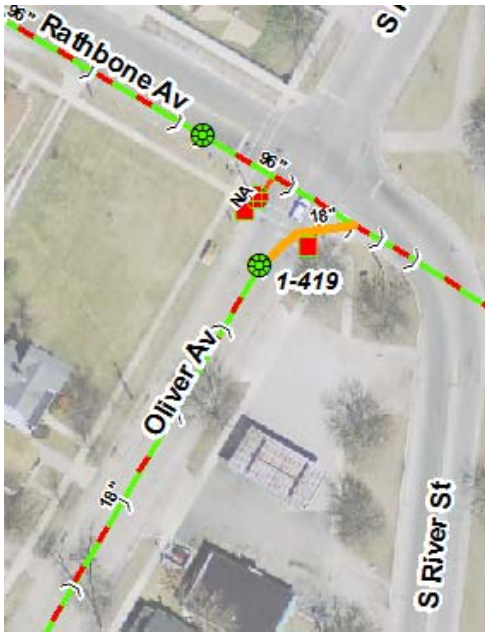


Figure: 30

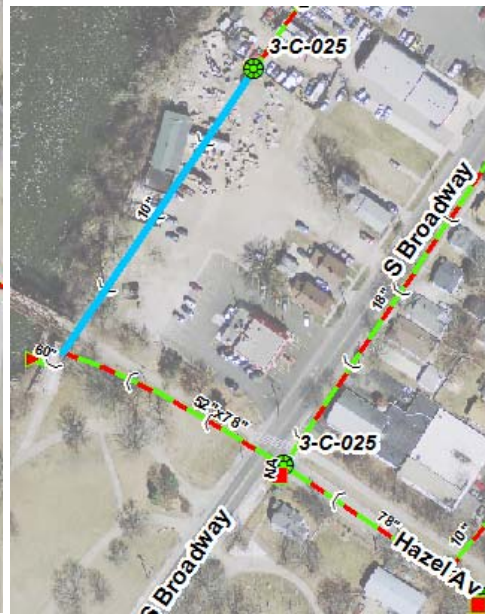


Figure: 31

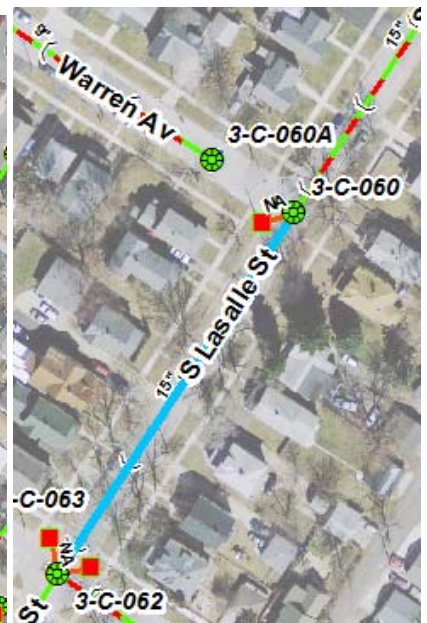


Figure: 32

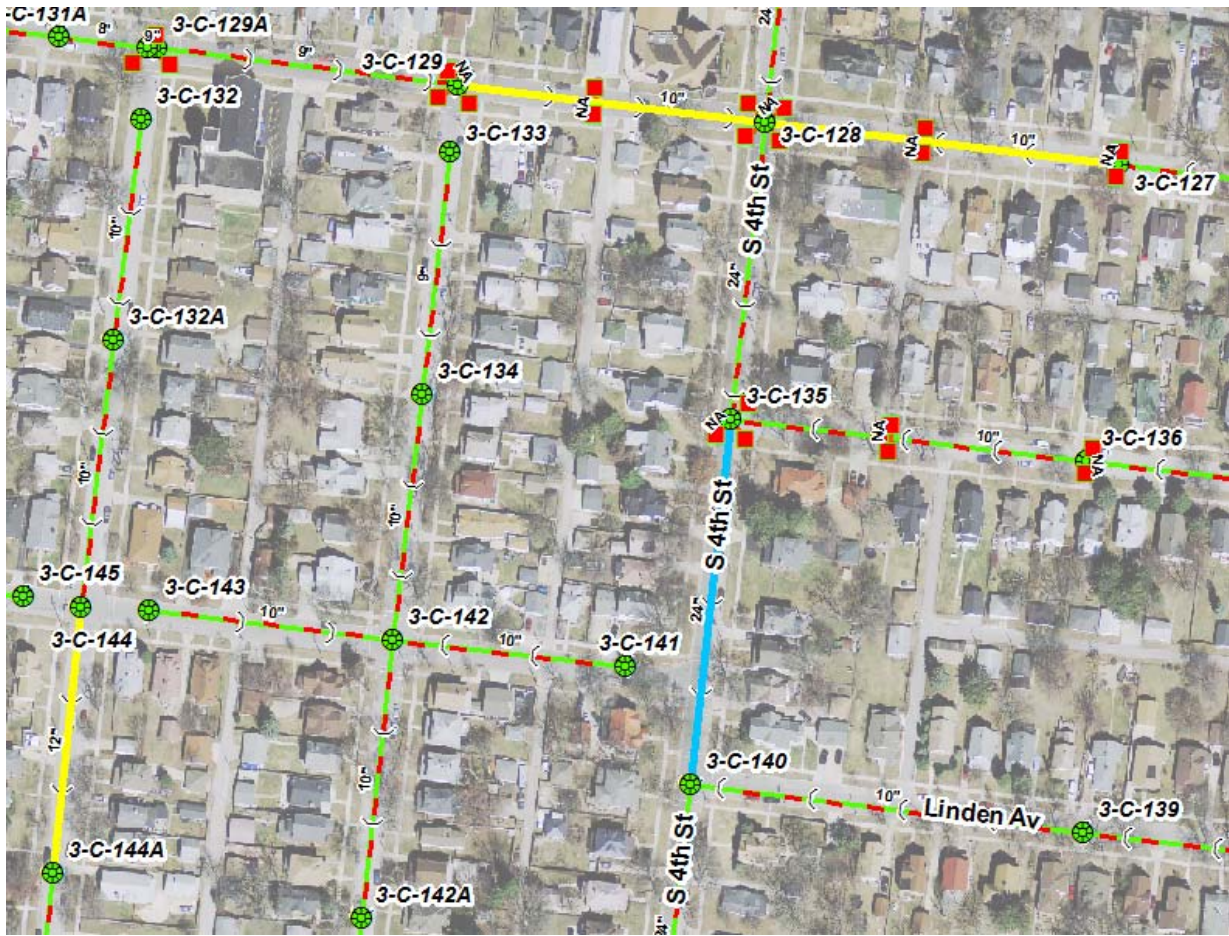


Figure: 33

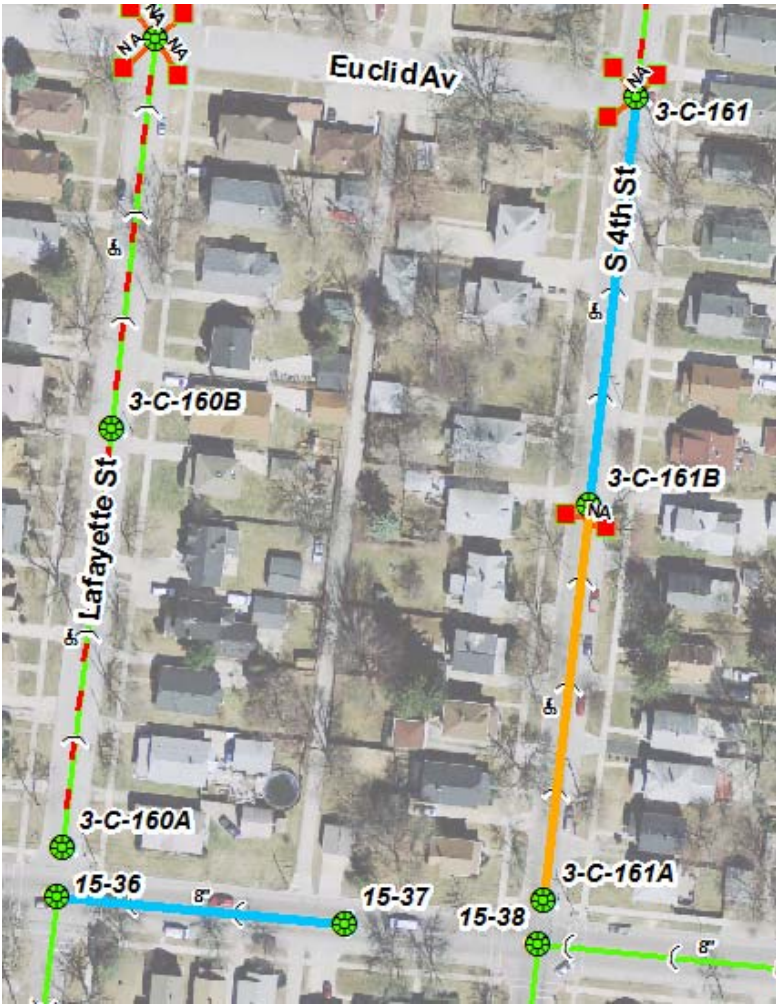


Figure: 34



Figure: 35

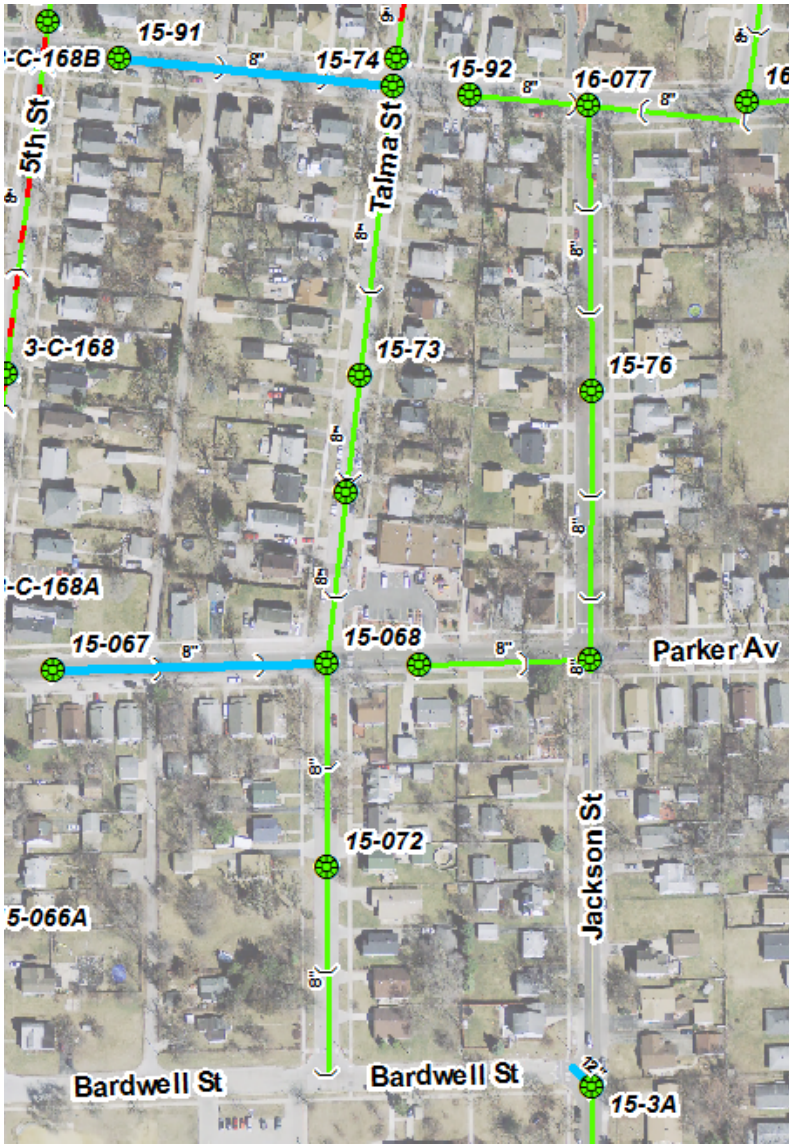


Figure: 36

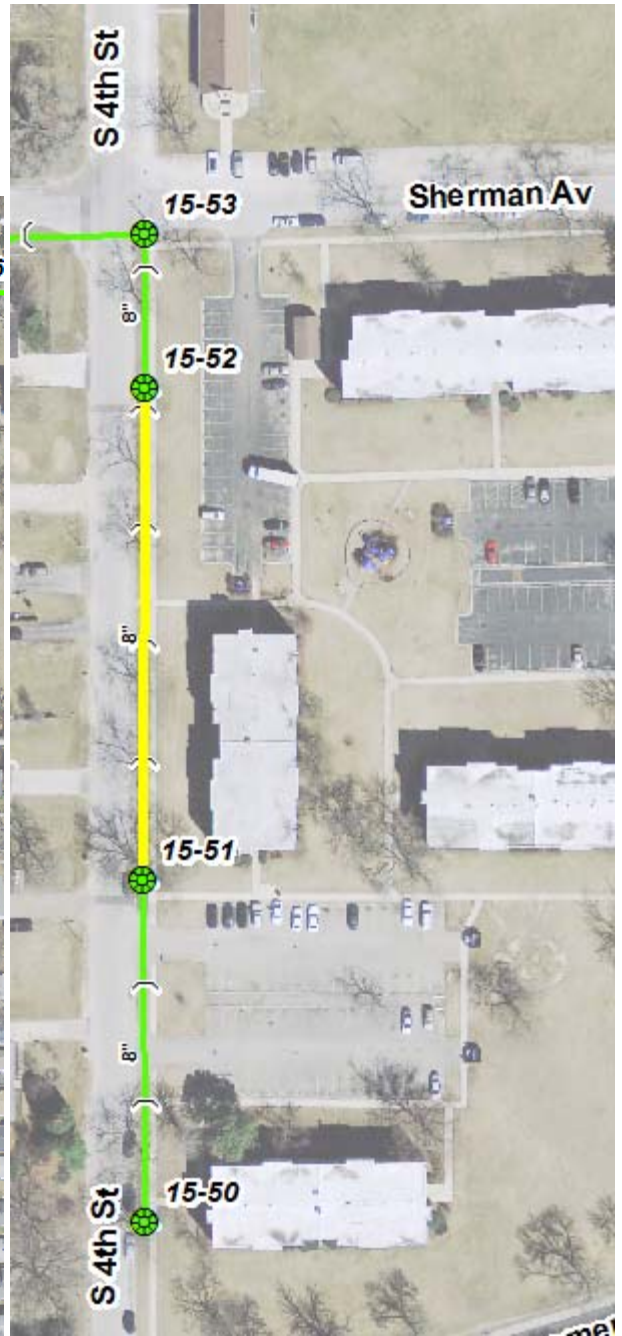


Figure: 37

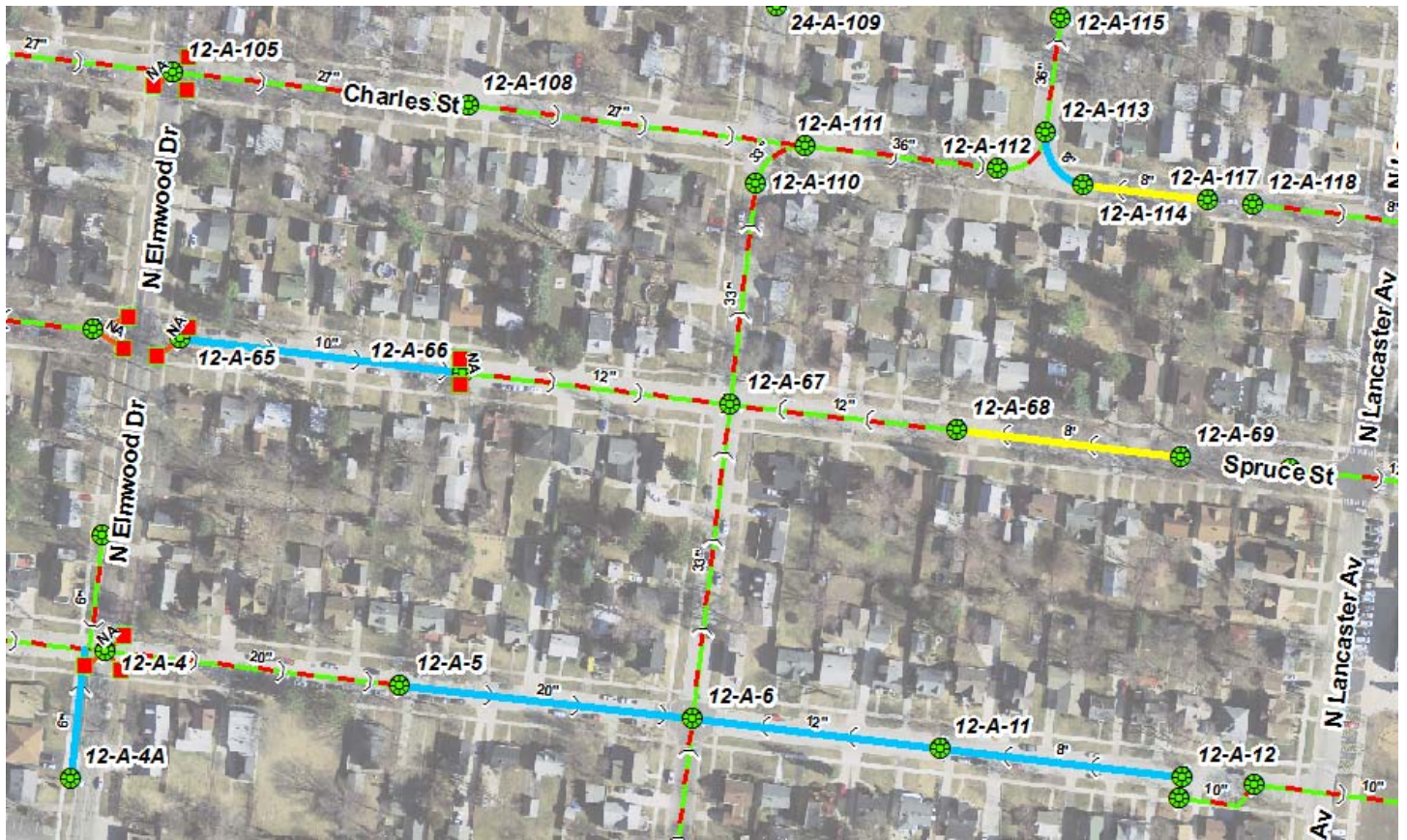


Figure: 38