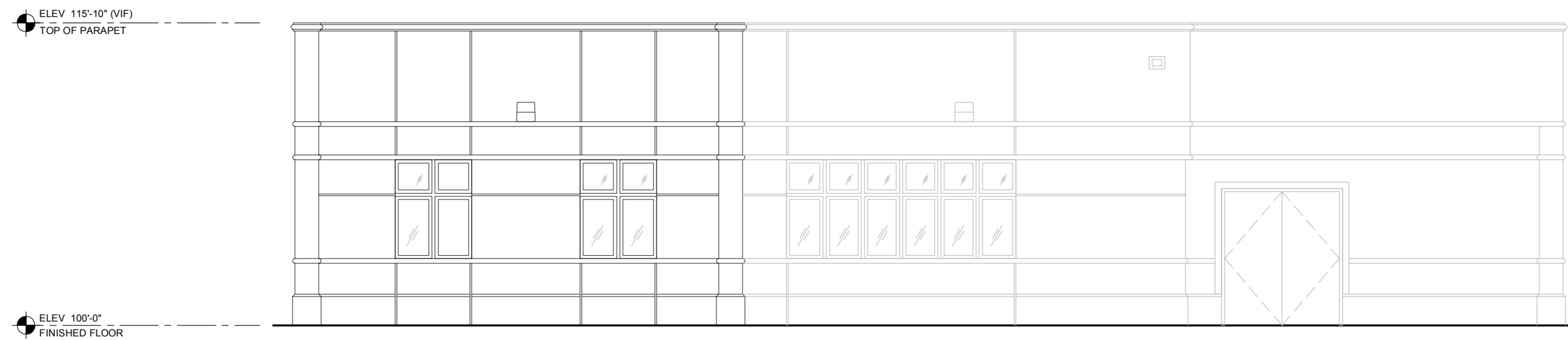
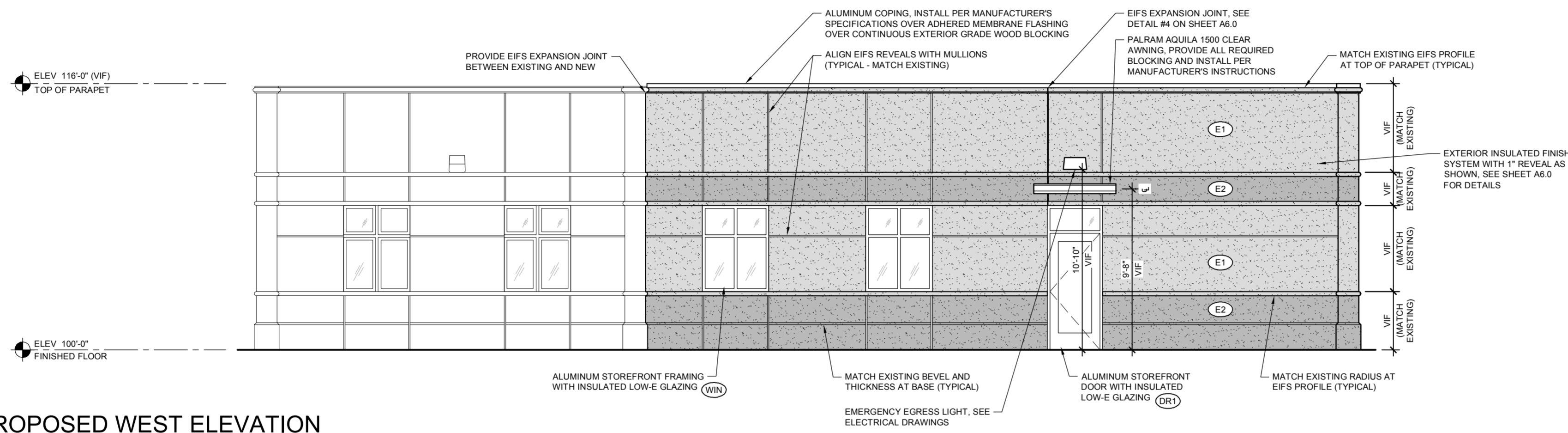


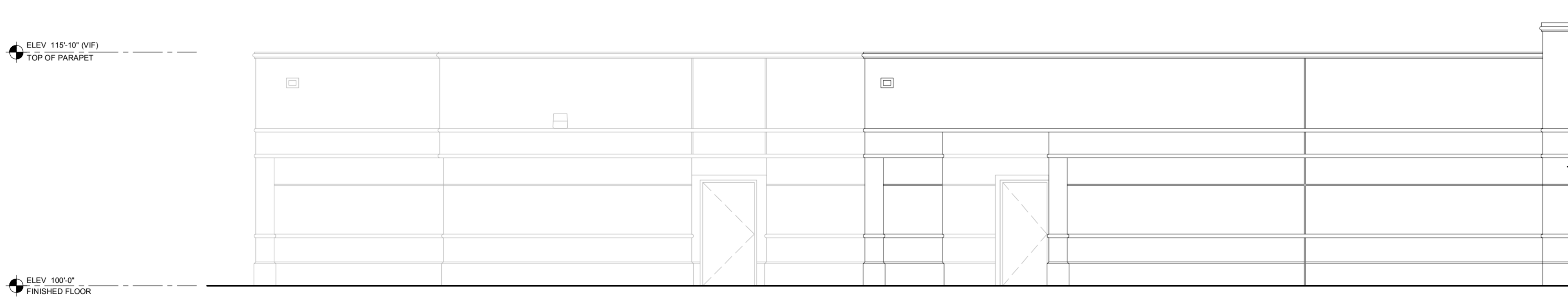
# ELEVATIONS



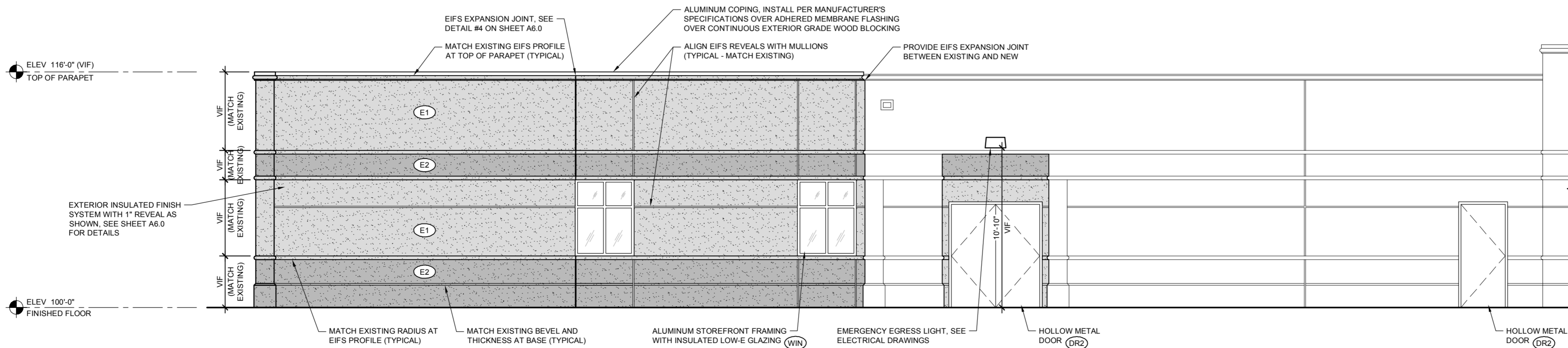
1 EXISTING WEST ELEVATION  
SCALE: 3/16" = 1'-0"



2 PROPOSED WEST ELEVATION  
SCALE: 3/16" = 1'-0"



3 EXISTING SOUTH ELEVATION  
SCALE: 3/16" = 1'-0"



4 PROPOSED SOUTH ELEVATION  
SCALE: 3/16" = 1'-0"

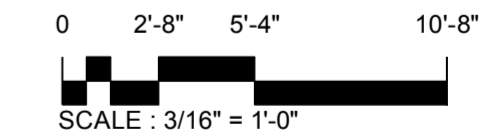
EXTERIOR FINISHES LEGEND		
(E1)	MANUF. COLOR FINISH PRODUCT	DRYVIT DRYVIT EXISTING COLOR MATCH EXISTING TEXTURE OUTSULATION
(E2)	MANUF. COLOR FINISH PRODUCT	DRYVIT DRYVIT EXISTING COLOR MATCH EXISTING TEXTURE OUTSULATION
(WIN)	MANUF. COLOR FINISH PRODUCT	KAWNEER MATCH EXISTING STOREFRONT (FROM EAST ADDITION) CENTER GLAZED VG451T STOREFRONT
(DR1)	MANUF. COLOR FINISH PRODUCT	KAWNEER MATCH EXISTING STOREFRONT (FROM EAST ADDITION) CENTER GLAZED 360 INSULCLAD ENTRANCE
(DR2)	MANUF. COLOR FINISH PRODUCT	PPG INDUSTRIES OR SIMILAR MATCH EFS COLOR 'E1' 2-COAT SYSTEM DURANAR COATINGS

#	DATE	REVISION DESCRIPTION



CKA Registration # 184-003003

Elevations for:  
**FKC - Aurora (Shell)**  
455 Mercy Lane  
Aurora, Illinois 60506



Elevation Data Table: Elevations		
Description	Value	Unit
(a) Building Height to Top of Parapet	17.83	feet
(b) Total Building Square Footage (typical)	10,253.00	Square Feet
(c) First Floor Building Square Footage (typical)	10,253.00	Square Feet
(d) Number of Building Stories (typical)	1.00	Square Feet

(e) Exterior Material List (including colors) for all buildings and accessory structures.  
EFS to match existing, storefront windows to match existing.

Prepared By:  
**ARCHITECT**  
Christopher D. Kidd, AIA, ALA, RIBA  
Illinois License # 001-016182  
Expires : November 30, 2018



These drawings, as instruments of service, remain the property of the Architect or Engineer. Any changes, publication, or use of any kind is prohibited unless expressly authorized by said party.

Copyright 2018  
Drafted By: JES  
Checked By: EAH  
Date Drafted: 09/10/2018  
Project #: 17159-02

**A300**  
EXTERIOR ELEVATIONS