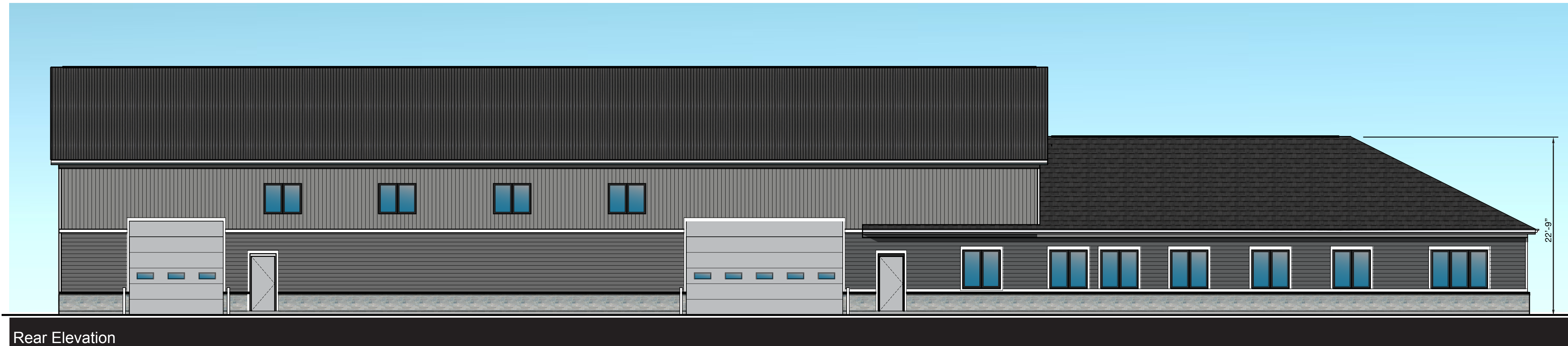
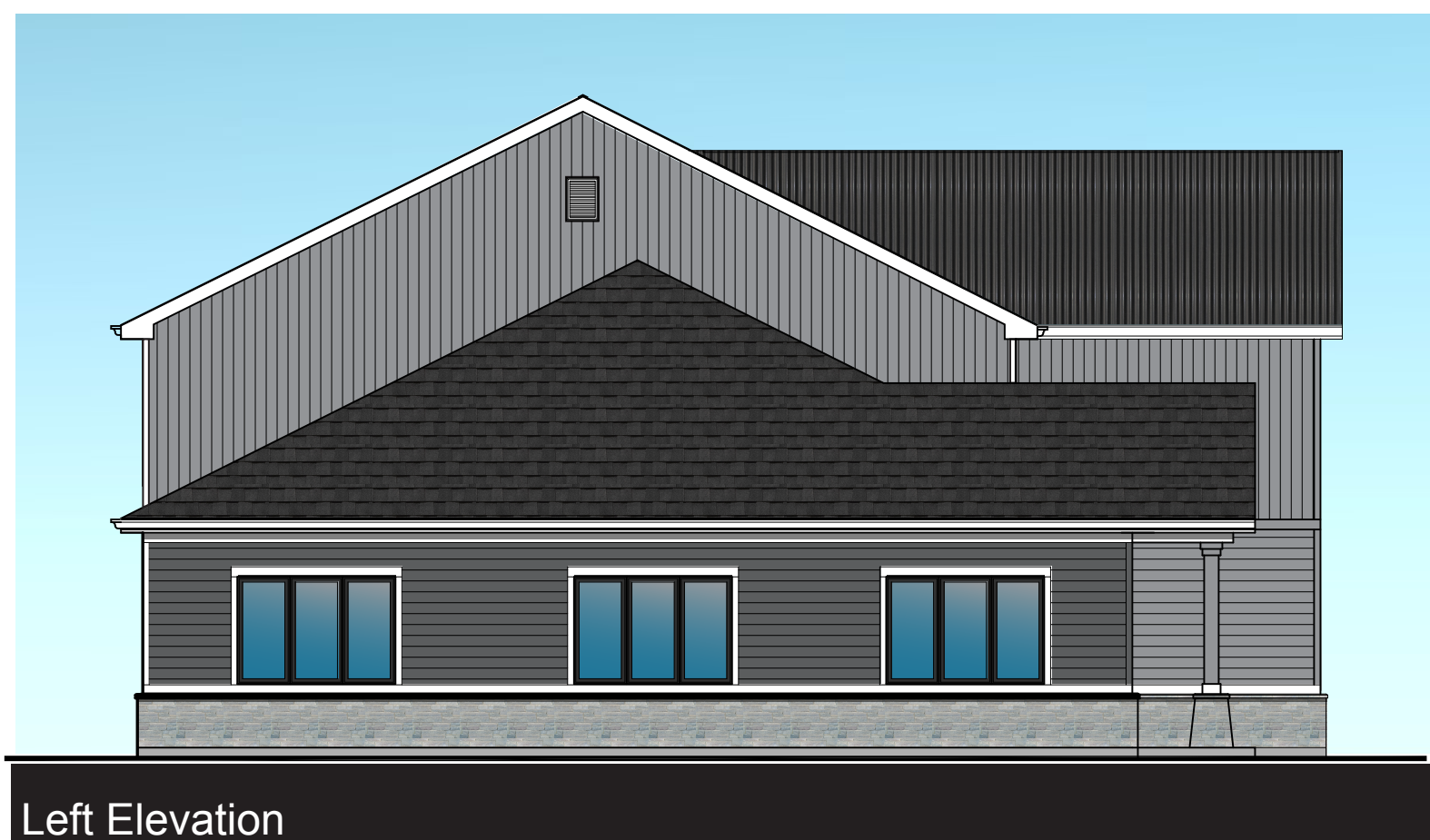


Elevations



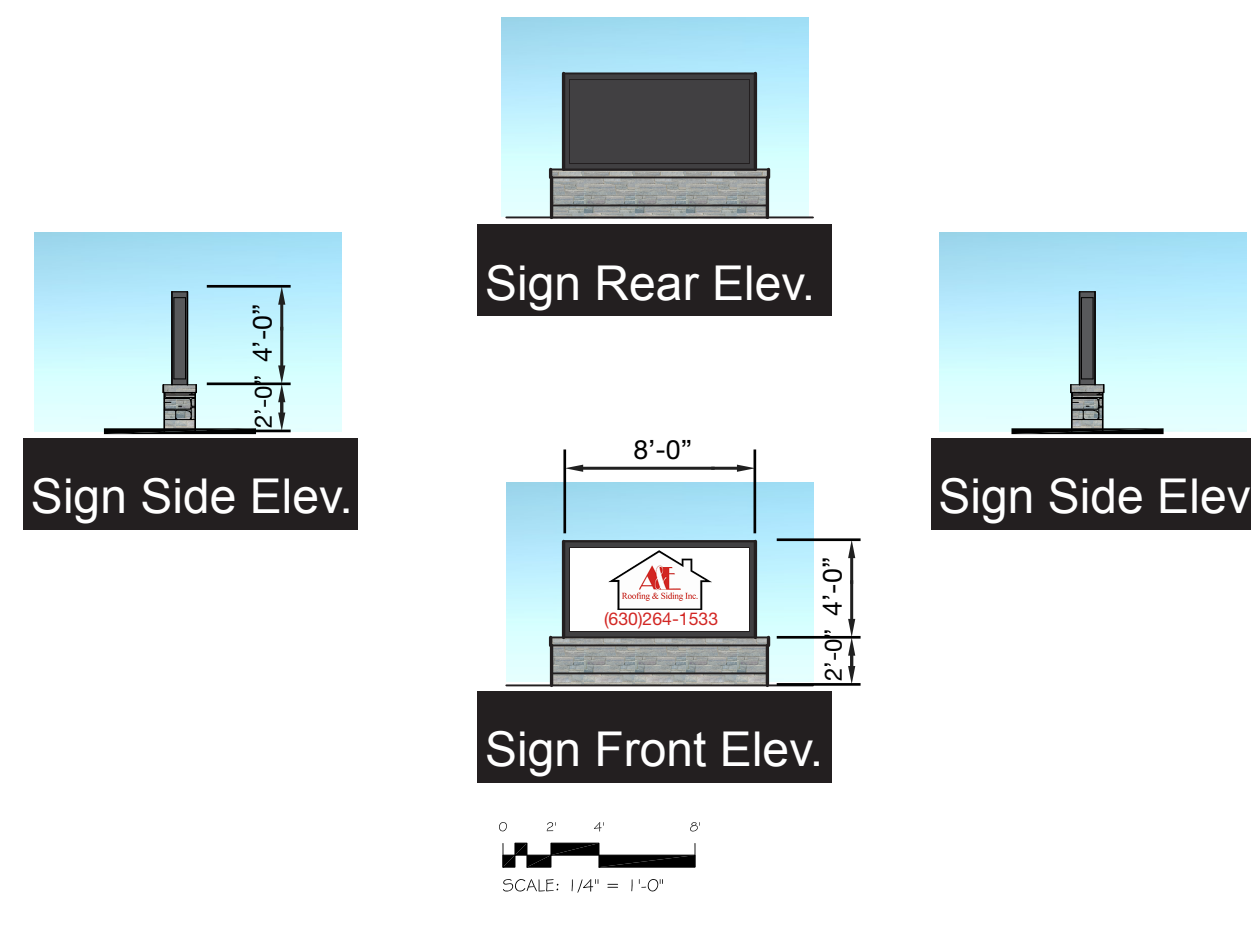
Rear Elevation

SCALE: 1/4" = 1'-0"



Left Elevation

SCALE: 1/4" = 1'-0"

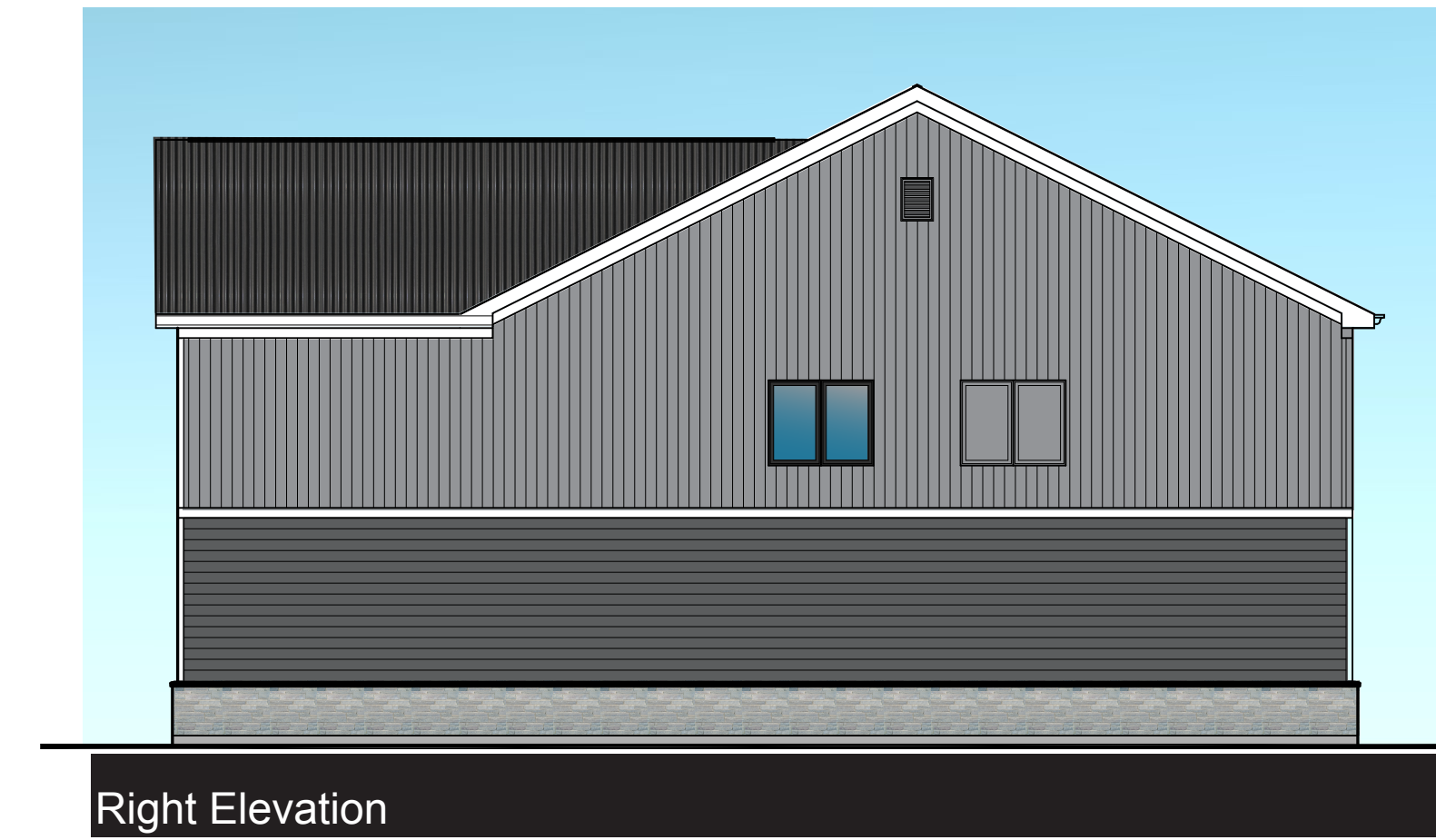


Sign Rear Elev.

Sign Side Elev.

Sign Front Elev.

SCALE: 1/4" = 1'-0"



Right Elevation

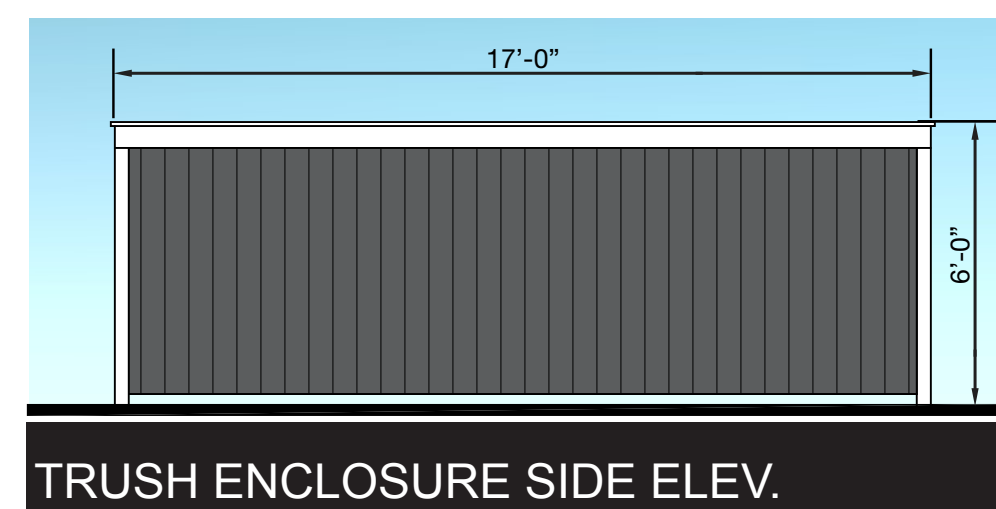
SCALE: 1/4" = 1'-0"



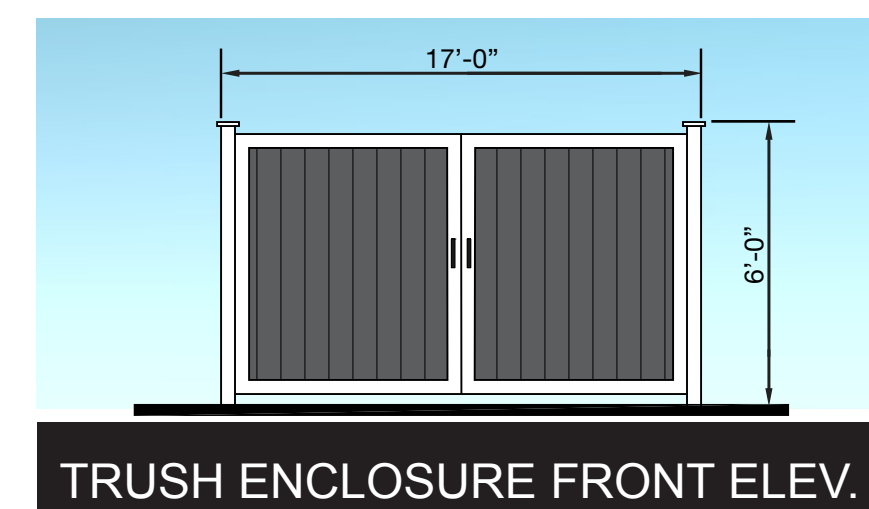
FRONT ELEVATION

SCALE: 1/4" = 1'-0"

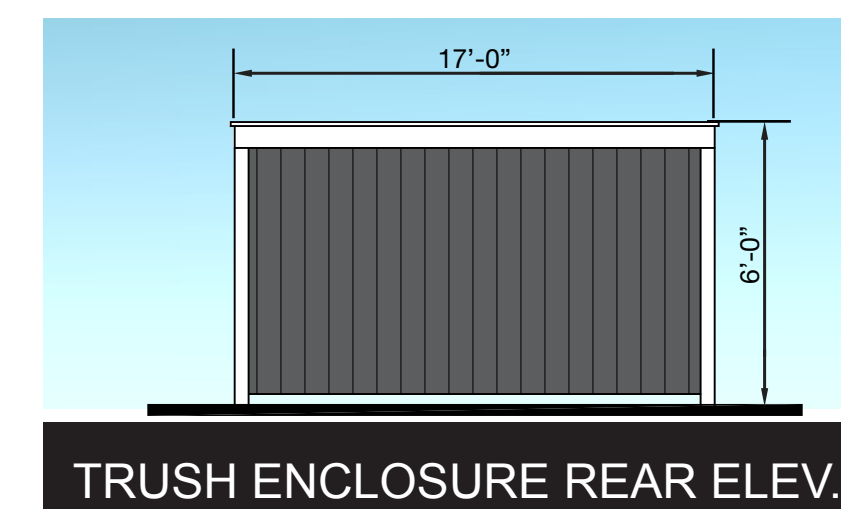
- CERTAINTED LANDMARK ARCHITECTURAL SHINGLES COLOR: MOIRE BLACK
- JAMES HARDIE CEDARMILL LAP SIDING COLOR: NIGHT GREY
- JAMES HARDIE SHAKE SIDING COLOR: NIGHT GREY
- WAINSCOAT STONE BUECHEL STONE CHILTON COUNTRY SQUIRE
- UNION STANDING SEAM METAL ROOF COLOR: BLACK
- JAMES HARDIE VERTICAL SIDING COLOR: GREY SLATE
- LP TRIM COLOR: WHITE



TRUSH ENCLOSURE SIDE ELEV.



TRUSH ENCLOSURE FRONT ELEV.



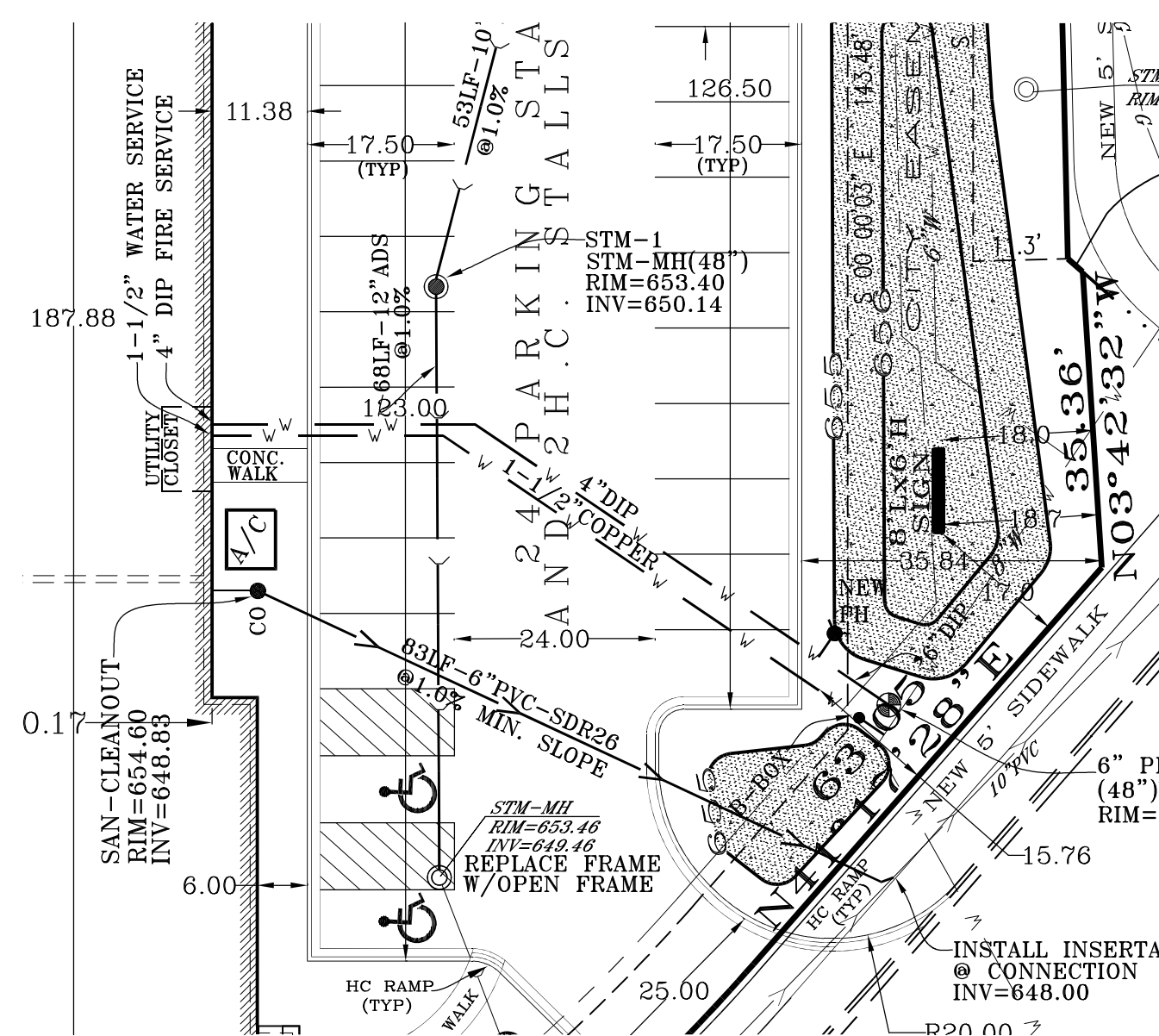
TRUSH ENCLOSURE REAR ELEV.

SCALE: 1/4" = 1'-0"

Perimeter Fencing



Sign Location Map



Elevation Data Table: Ground Signage			
Ground Sign #	Description	Value	Unit
1	i) Length of street frontage - on which sign is located	328	Feet
	ii) Width of Sign Face	8.00	Feet
	iii) Height of Sign Face	4.00	Feet
	iv) Square Footage of Sign Face	32	Square Feet
	v) Height of Sign (overall)	6	Feet
	vi) Width of Sign (overall)	9	Feet
	vii) Type of Sign	Lighted box	
	viii) Type of Sign Base	Stone to match building	
	ix) Is there a Digital Display	No	
		If Yes then, Location of Digital Display on the sign	
	Height of Digital Display		Feet
	Width of Digital Display		Feet
	Square Footage of Digital Display		Square Feet
	Percent of Digital Display Sign Coverage		Percent

Elevation Data Table: Elevations			
Description	Value	Unit	
a) Building Height in feet (typical)	30.396	feet	
b) Total Building Square Footage (typical)	8,312.00	Square Feet	
c) First Floor Building Square Footage (typical)	8,312.00	Square Feet	
d) Number of building stories (typical)	1.00	Square Feet	
e) Exterior Material List (including colors) for all buildings and accessory structures: Stone Gray natural color, hardi siding Gray Color, vertical siding Gray Color, Roof Black Color			

Owner Info:
A&E Roofing and Siding, Inc.
 Bell-Gale Business Park, Aurora, Illinois
 Site Plan Designer info:
County Engineers Inc.
 0N406 Dooley Drive, Geneva, Illinois 60134

Drawing Name:	Date	Revision:
ELEVATION	04-06-2017	