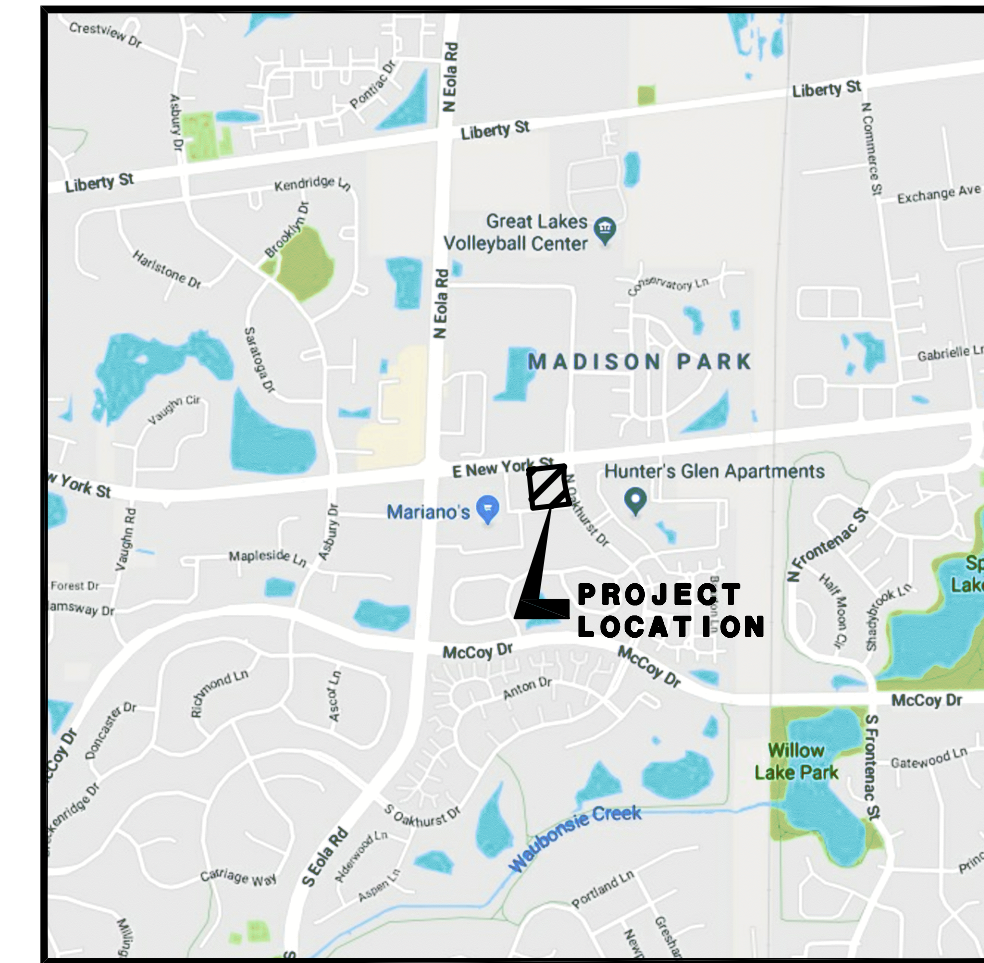
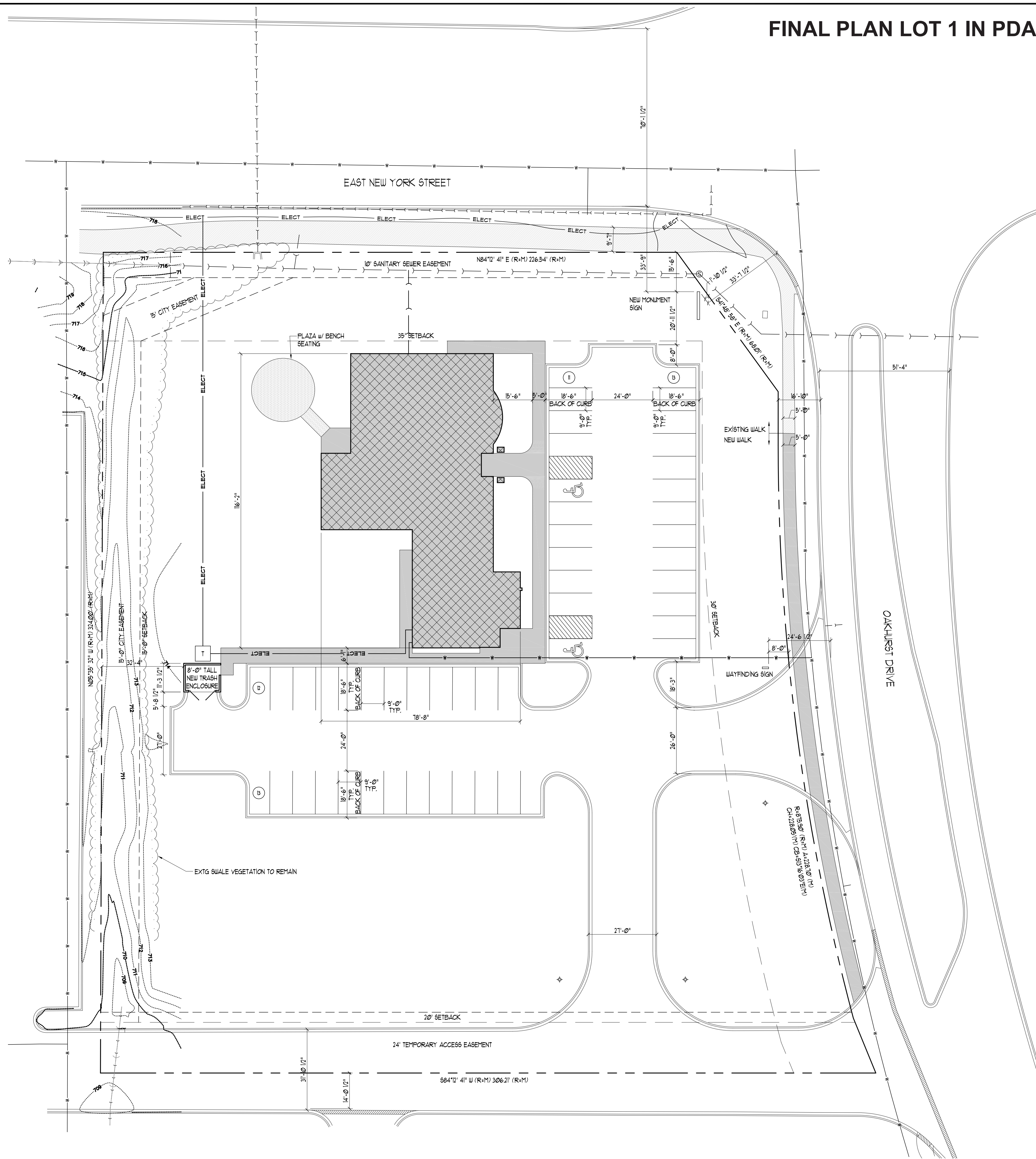


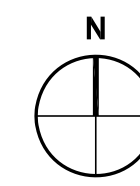
# FINAL PLAN LOT 1 IN PDA RESUBDIVISION OF LOT 2 IN FOX VALLEY EAST



FINAL PLAN LEGEND	
SYMBOL	DESCRIPTION
[Cross-hatched box]	PROPOSED 6,000 SQ. FT. 1 STORY BUILDING
[Solid grey box]	NEW CONCRETE WALK
[Dotted box]	EXTG CONCRETE WALK
[Horizontal lines box]	PROPOSED BRICK WALK
[Wavy line box]	EXTG SWALE VEGETATION TO REMAIN
[Dashed line box]	TOPOGRAPHY OF SWALE
[Thin solid line box]	PROPERTY LINE
[Thick solid line box]	SETBACK LINE
[Line with 'W' box]	SITE UTILITY WATER LINE
[Line with 'E' box]	SITE UTILITY ELECTRIC LINE
[Line with 'S' box]	SITE SANITARY LINE
[Diamond symbol]	EXTERIOR BOLLARD

**PETITIONER: WATERLEAF WOMEN'S CENTER**  
**CURRENT ADDRESS: 3598 E NEW YORK ST, AURORA, IL 60504**  
**FINAL PLAN ADDRESS: 3055 E. NEW YORK ST, AURORA, IL 60504**

Development Data Table: Final Plan					
Description	Value	Unit	Description	Value	Unit
a) Tax/Parcel Identification Number(s) (PINs): 07-20-302-080			i) Total Number of Residential Dwelling Units	0	units
			i. Gross Density	0.00	du/acre
			ii. Net Density	0.00	Net Density
			k) Number of Single Family Dwelling Units	0	units
			i. Gross Density	0.00	du/acre
			ii. Net Density	0.00	Net Density
b) Proposed land use(s): Medical Clinic			iii. Unit Square Footage (average)	0	square feet
			iv. Bedroom Mix	0%	% 1 bdr
				0%	% 2 bdr
				20%	% 3 bdr
				80%	% 4 bdr
c) Total Property Size	2.02940771	Acres	v. Number of Single Family Corner Lots	0	units
	88401	Square feet			
d) Total Lot Coverage (buildings and pavement)	37400	Square feet	vi. Number of Single Family Attached Dwelling Units	0	units
	42%	Percent	i. Gross Density	0.00	du/acre
e) Open space / landscaping	51001	Square feet	ii. Net Density	0.00	Net Density
	58%	Percent	iii. Unit Square Footage (average)	0	square feet
f) Land to be dedicated to the School District	0	Acres	iv. Bedroom Mix	0%	% 1 bdr
g) Land to be dedicated to the Park District	0	Acres	i. Gross Density	0.00	du/acre
h) Number of parking spaces provided (individually accessible)	49	spaces	ii. Net Density	0.00	Net Density
	49	spaces	iii. Unit Square Footage (average)	0	square feet
i. surface parking lot	47	spaces	iv. Bedroom Mix	0%	% 1 bdr
perpendicular	47	spaces	i. Gross Density	90%	% 2 bdr
parallel	0	spaces	ii. Net Density	10%	% 3 bdr
angled	0	spaces	iii. Unit Square Footage (average)	0	square feet
handicapped	2	spaces	iv. Bedroom Mix	0%	% 4 bdr
ii. enclosed	0	spaces	m) Number of Multifamily Dwelling Units	0	units
iii. bike	0	racks	i. Gross Density	0.00	du/acre
i) Number of buildings	1	building	ii. Net Density	0.00	Net Density
i. Number of stories	1	stories	iii. Unit Square Footage (average)	0	square feet
ii. Building Square Footage (typical)	5949	square feet	iv. Bedroom Mix	0%	% 1 bdr
iii. Square Footage of retail floor area	0	square feet	i. Gross Density	40%	% 1 bdr
iv. First Floor Building Square Footage (typical)	5949	square feet	ii. Net Density	50%	% 2 bdr
			iii. Unit Square Footage (average)	10%	% 3 bdr



## SITE PLAN

SCALE: 1" = 20'-0" 49 TOTAL PARKING SPACES (INCLUDING 2 HANDICAP SPACES)



charles vincent george  
ARCHITECTS

1245 E. Diehl Rd. Suite 101  
Naperville, Illinois 60563  
P | 630.357.2023 F | 630.357.2662  
cvgarchitects.com

STAMP:

EXPIRES 11/30/2018  
ILL. ARCHITECTURAL DESIGN FIRM NO: 184-000944

DATE:

**COPYRIGHT:**  
THE ATTACHED DRAWINGS ARE COPYRIGHTED AND ARE FOR INFORMATIONAL PURPOSES ONLY. CHARLES VINCENT GEORGE ARCHITECTS, INC. HAS NO MEANS OF ENSURING THAT THE DRAWINGS WILL NOT, OR HAVE NOT BEEN AFFECTED BY ANY FILE CONVERSION OR PRINTING PROCESS AND CANNOT THEREFORE BE RESPONSIBLE FOR THEIR CONTENTS. IF THE DRAWINGS ARE TO BE USED BY A THIRD PARTY FOR ANY PURPOSE, THE THIRD PARTY SHALL BE SOLELY RESPONSIBLE FOR ENSURING THE ACCURACY OF THE INFORMATION CONTAINED THEREIN. ALL UNAUTHORIZED PRINTING AND/OR DISTRIBUTION IS STRICTLY PROHIBITED WITHOUT PRIOR WRITTEN CONSENT FROM CHARLES VINCENT GEORGE ARCHITECTS, INC.

**ISSUE AND/OR REVISIONS:**

NO.	DATE	DESCRIPTION
07/03/2018	GMP	
09/10/2018	ISSUE FOR PERMIT	
10/09/18	PERMIT REVISION 01	

PROJECT:

NEW GROUND-UP CONSTRUCTION  
**WATERLEAF**  
**3055 E NEW YORK ST**  
 AURORA, IL

TITLE:  
SITE PLAN

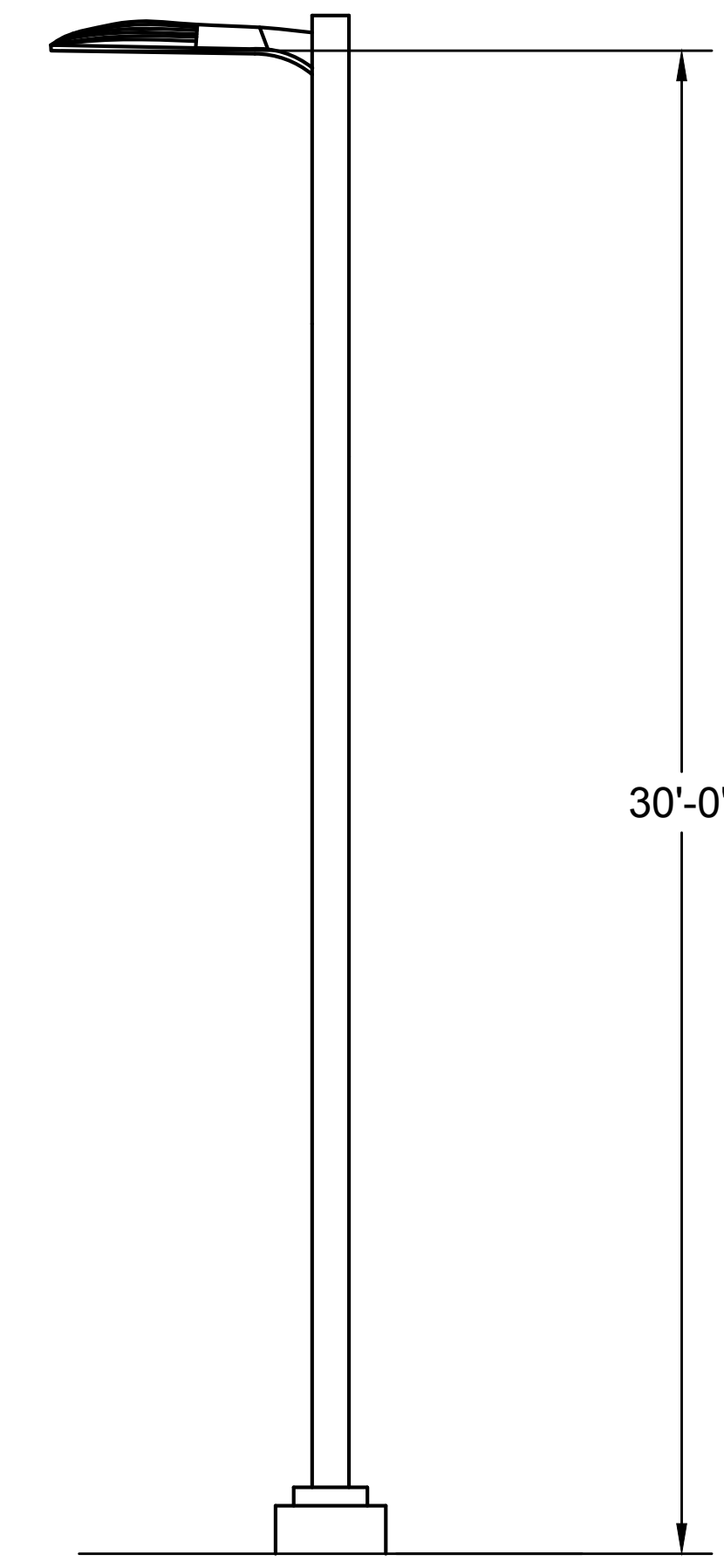
DATE: 06/18/18 PROJECT #: 2018-018

PRINCIPAL: BFG SHEET: A1.1

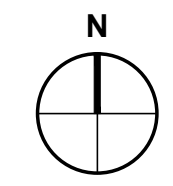
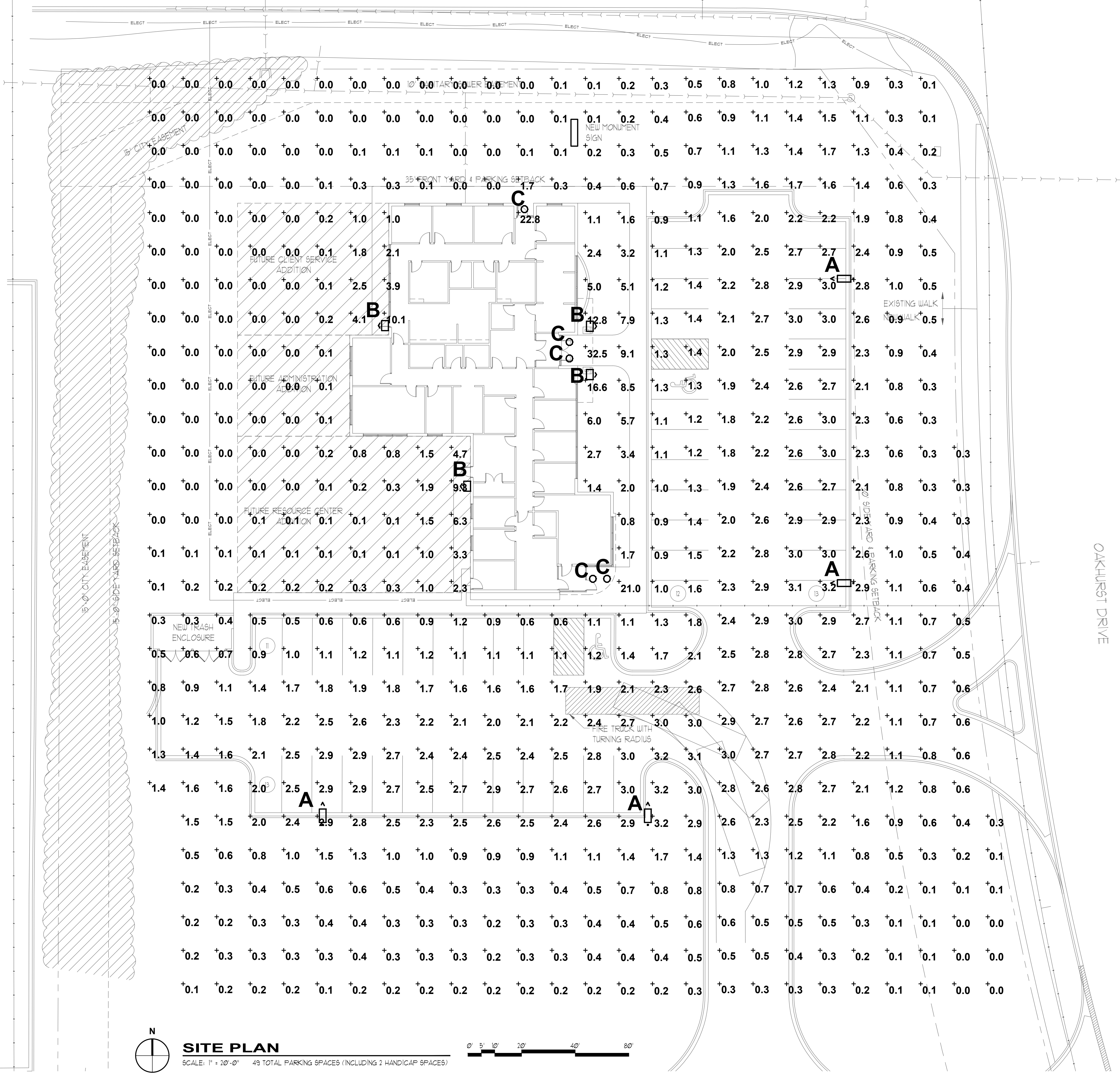
PROJECT MGR: JRT DRAWN BY: JWN  
 DRAWING NUMBER: W/2018-018/DRAWINGS/  
 A1.1 SITE PLAN DSTL 18018

LUMINAIRE SCHEDULE									
Symbol	Label	Qty	Catalog Number	Description	Lamp	File	Lumens	LLF	Watts
	A	4	DSX1 LED P6 40K T2M MVOLT	DSX1 LED P6 40K T2M MVOLT	LED	DSX1_LED_P6_40K_T2M_MV_OLT.ies	Absolute	0.95	163
	B	4	WSQ LED P4 SR2 50K MVOLT	WSQ LED WITH P4-PERFORMANCE PACKAGE, 5000K, AND SR2 OPTIC TYPE	LED	WSQ_LED_P4_SR2_50K_MV_OLT.ies	Absolute	0.95	60.68
	C	5	LDN6 30/30 L06AR LD	6IN LDN, 3000K, 3000LM, 80CRI, CLEAR, MATTE DIFFUSE REFLECTOR	LED	LDN6_30_30_L06AR_LD.ies	Absolute	0.95	34.69

STATISTICS						
Description	Symbol	Avg	Max	Min	Max/Min	Avg/Min
Calc Zone #2	+	1.4 fc	32.5 fc	0.0 fc	N / A	N / A



1 POLE ELEVATION  
SCALE: NONE



**SITE PLAN**  
SCALE: 1" = 20'-0" 49 TOTAL PARKING SPACES (INCLUDING 3 HANDICAP SPACES)



Photometric Data Table		
Description	Value	Unit
Total proposed external lumens	106,936	Lumens
Total square footage of area to be illuminated	35,000	Square Feet
Fixture #	Description	Value
1	i) Type of Fixture (i.e. Pole, Wall Mounted)	Pole Mounted
	ii) manufacturer and model number(s)	Lithonia-DSX1LEDP640KT2M
	iii) Number of these Fixtures Shown	4
	iv) Lamp source type (bulb type, i.e. high pressure sodium, LED)	163W LED
	v) Lumen output and wattage per Fixture	17,728L 163W
2	vi) Mounting Height / Fixture Height	30
	Description	Value
	i) Type of Fixture (i.e. Pole, Wall Mounted)	Wall Mount
	ii) manufacturer and model number(s)	Lithonia-WSQLEDP440KSR2
3	iii) Number of these Fixtures Shown	4
	iv) Lamp source type (bulb type, i.e. high pressure sodium, LED)	61W LED
	v) Lumen output and wattage per Fixture	6,159L 61W
	vi) Mounting Height / Fixture Height	12
4	Description	Value
	i) Type of Fixture (i.e. Pole, Wall Mounted)	Wall mount
	ii) manufacturer and model number(s)	Lithonia-LDN630/30L06ARLD
	iii) Number of these Fixtures Shown	5
5	iv) Lamp source type (bulb type, i.e. high pressure sodium, LED)	34W LED
	v) Lumen output and wattage per Fixture	3000L 34W
	vi) Mounting Height / Fixture Height	12
	Description	Value
6	i) Type of Fixture (i.e. Pole, Wall Mounted)	Bollard
	ii) manufacturer and model number(s)	Lithonia-dsxb led16C 30K SYM MVOLT DNAXD
	iii) Number of these Fixtures Shown	3
	iv) Lamp source type (bulb type, i.e. high pressure sodium, LED)	20W LED
7	v) Lumen output and wattage per Fixture	1674L 20W
	vi) Mounting Height / Fixture Height	3



**charles vincent george**  
ARCHITECTS

1245 E. Diehl Rd. Suite 101  
Naperville, Illinois 60563  
P | 630.357.2023 F | 630.357.2662  
cvgarchitects.com

STAMP:  
PRELIMINARY NOT FOR CONSTRUCTION

EXPIRES 11/30/2018  
IL ARCHITECTURAL DESIGN FIR# NO: 184-000544

DATE:  
COPYRIGHT:  
THE ATTACHED DRAWINGS ARE COPYRIGHTED AND ARE FOR INFORMATIONAL PURPOSES ONLY. CHARLES VINCENT GEORGE ARCHITECTS, INC. HAS NO MEANS OF ENSURING THAT THE DRAWINGS WILL NOT OR HAVE NOT BEEN AFFECTED BY ANY FILE CONVERSION OR PRINTING PROCESS AND CANNOT THEREFORE BE RESPONSIBLE FOR THEIR CONTENTS. IF THE DRAWINGS ARE TO BE USED BY A THIRD PARTY FOR ANY PURPOSE, THE THIRD PARTY SHALL BE WHOLLY RESPONSIBLE FOR ENSURING THE ACCURACY OF THE INFORMATION CONTAINED THEREIN. ALL UNAUTHORIZED PRINTING AND/OR DISTRIBUTION IS STRICTLY PROHIBITED WITHOUT PRIOR WRITTEN CONSENT FROM CHARLES VINCENT GEORGE ARCHITECTS, INC.

ISSUE AND/OR REVISIONS:		
NO.	DATE	DESCRIPTION
07/03/2018	GMP	

PROJECT:

NEW GROUND-UP  
**WATERLEAF**  
3055 E NEW YORK ST  
AURORA, IL

TITLE:  
SITE PLAN

DATE:	06/18/18	PROJECT #:	2018-018
PRINCIPAL:	STT	SHEET:	ES1.1
PROJECT MGR:	BC, KM		



**WT GROUP**  
Structural | Mechanical | Electrical | Plumbing  
Civil | Land Survey | Telecommunication | Acoustic  
Accessibility Consulting | Design & Program Management  
Engineering with Precision, Passion & Innovation  
2075 Palms Avenue | Naperville, Illinois, IL 60563  
P: 224.296.8333 | F: 224.296.8444  
wtengineering.com

IL License No. 184-000544 Expires 11/30/2018  
© COPYRIGHT 2018 THE W-T GROUP, LLC



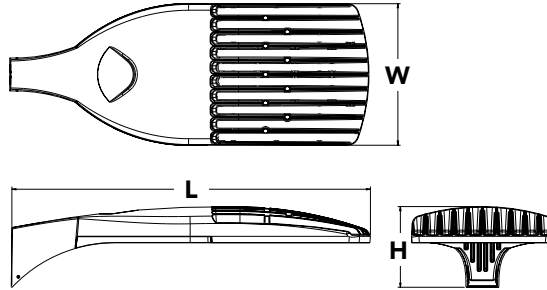
# D-Series Size 1 LED Area Luminaire

d#series



## Specifications

<b>EPA:</b>	1.01 ft <sup>2</sup> (0.09 m <sup>2</sup> )
<b>Length:</b>	33" (83.8 cm)
<b>Width:</b>	13" (33.0 cm)
<b>Height:</b>	7-1/2" (19.0 cm)
<b>Weight (max):</b>	27 lbs (12.2 kg)



A+ Capable options indicated by this color background.

Catalog Number
Notes
Type

Hit the Tab key or mouse over the page to see all interactive elements.

## Capable Luminaire

This item is an A+ capable luminaire, which has been designed and tested to provide consistent color appearance and system-level interoperability.

- All configurations of this luminaire meet the Acuity Brands' specification for chromatic consistency
- This luminaire is A+ Certified when ordered with DTL<sup>®</sup> controls marked by a **shaded background**. DTL DLL equipped luminaires meet the A+ specification for luminaire to photocontrol interoperability<sup>1</sup>
- This luminaire is part of an A+ Certified solution for ROAM<sup>®</sup> or XPoint<sup>™</sup> Wireless control networks, providing out-of-the-box control compatibility with simple commissioning, when ordered with drivers and control options marked by a **shaded background**<sup>1</sup>

To learn more about A+, visit [www.acuitybrands.com/aplus](http://www.acuitybrands.com/aplus).

1. See ordering tree for details.
2. A+ Certified Solutions for ROAM require the order of one ROAM node per luminaire. Sold Separately: [Link to Roam](#); [Link to DTL DLL](#)

## Ordering Information

**EXAMPLE: DSX1 LED P7 40K T3M MVOLT SPA DDBXD**

DSX1LED					
Series	LEDs	Color temperature	Distribution	Voltage	Mounting
DSX1 LED	<b>Forward optics</b> P1 P4 P7 P2 P5 P8 P3 P6 P9 <b>Rotated optics</b> P10 <sup>1</sup> P12 <sup>1</sup> P11 <sup>1</sup> P13 <sup>1</sup>	30K 3000 K 40K 4000 K 50K 5000 K AMBPC Amber phosphor converted <sup>2</sup>	T1S Type I short T2S Type II short T2M Type II medium T3S Type III short T3M Type III medium T4M Type IV medium TFTM Forward throw medium TSVS Type V very short T5S Type V short T5M Type V medium T5W Type V wide BLC Backlight control <sup>2,3</sup> LCCO Left corner cutoff <sup>2,3</sup> RCCO Right corner cutoff <sup>2,3</sup>	MVOLT <sup>4,5</sup> 120 <sup>6</sup> 208 <sup>5,6</sup> 240 <sup>5,6</sup> 277 <sup>6</sup> 347 <sup>5,6,7</sup> 480 <sup>5,6,7</sup>	<b>Shipped included</b> SPA Square pole mounting RPA Round pole mounting WBA Wall bracket SPUMBA Square pole universal mounting adaptor <sup>8</sup> RPUMBA Round pole universal mounting adaptor <sup>8</sup> <b>Shipped separately</b> KMA8 DDBXD U Mast arm mounting bracket adaptor (specify finish) <sup>9</sup>

Control options	Other options	Finish (required)
<b>Shipped installed</b> NLTAIR2 nLight AIR generation 2 enabled <sup>10</sup> PER NEMA twist-lock receptacle only (controls ordered separate) <sup>11</sup> PER5 Five-wire receptacle only (controls ordered separate) <sup>11,12</sup> PER7 Seven-wire receptacle only (controls ordered separate) <sup>11,12</sup> DMG 0-10V dimming extend out back of housing for external control (leads exit fixture) DS Dual switching <sup>13,14</sup> PIR Bi-level, motion/ambient sensor, 8-15' mounting height, ambient sensor enabled at 5fc <sup>5,15,16</sup> PIRH Bi-level, motion/ambient sensor, 15-30' mounting height, ambient sensor enabled at 5fc <sup>5,15,16</sup> PIRHN Network, Bi-Level motion/ambient sensor <sup>17</sup> PIR1FC3V Bi-level, motion/ambient sensor, 8-15' mounting height, ambient sensor enabled at 1fc <sup>5,15,16</sup>	PIRH1FC3V Bi-level, motion/ambient sensor, 15-30' mounting height, ambient sensor enabled at 1fc <sup>5,15,16</sup> BL30 Bi-level switched dimming, 30% <sup>5,14,18</sup> BL50 Bi-level switched dimming, 50% <sup>5,14,18</sup> PNMTDD3 Part night, dim till dawn <sup>5,19</sup> PNMT5D3 Part night, dim 5 hrs <sup>5,19</sup> PNMT6D3 Part night, dim 6 hrs <sup>5,19</sup> PNMT7D3 Part night, dim 7 hrs <sup>5,19</sup> FAO Field adjustable output <sup>20</sup>	<b>Shipped installed</b> HS House-side shield <sup>21</sup> SF Single fuse (120, 277, 347V) <sup>6</sup> DF Double fuse (208, 240, 480V) <sup>6</sup> L90 Left rotated optics <sup>1</sup> R90 Right rotated optics <sup>1</sup> <b>Shipped separately</b> BS Bird spikes <sup>22</sup> EGS External glare shield <sup>22</sup>
		DDBXD Dark bronze DBLXD Black DNAXD Natural aluminum DWHXD White DDBTXD Textured dark bronze DBLBDX Textured black DNATXD Textured natural aluminum DWHGXD Textured white





# WSQ LED

## Architectural Wall Sconce



Inverted available with WLU option only.

### Specifications

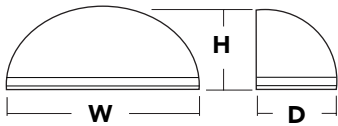
#### Luminaire

**Height:** 9-3/8"  
(23.8 cm)

**Width:** 18"  
(45.7 cm)

**Depth:** 9"  
(22.8 cm)

**Weight:** 17 lbs  
(7.7 kg)

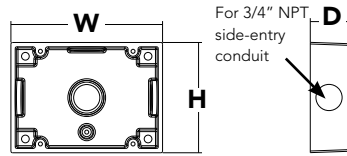


### Optional Back Box (BBW)

**Height:** 4"  
(10.2 cm)

**Width:** 5-1/2"  
(14.0 cm)

**Depth:** 1-1/2"  
(3.8 cm)



Catalog Number

Notes

Type

Hit the Tab key or mouse over the page to see all interactive elements.

### Introduction

Classic Architectural Wall Sconce with the LED technology. Long-life, maintenance-free product with typical energy savings of 80% compared to metal halide versions. The integral battery backup option provides emergency egress lighting, without the use of a back-box or remote gear, so installations maintain their aesthetic integrity. The WSQ LED is ideal for replacing existing 50 – 250W metal halide wall-mounted products. The expected service life is 20+ years of nighttime use.

### Ordering Information

**EXAMPLE:** WSQ LED P2 40K SR3 MVOLT DBBTXD

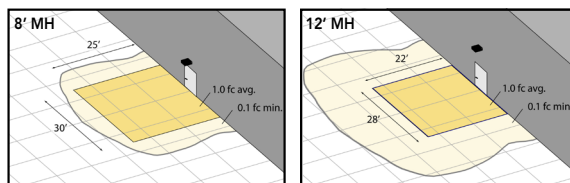
WSQ LED								
Series	Performance Package	Color Temperature	Distribution	Voltage	Mounting	Options	Finish (required)	
WSQ LED	P1	30K	SR2 Type II	MVOLT <sup>1</sup>	<b>Shipped included</b>	<b>Shipped installed</b>	DBBXD Dark bronze	
	P2	40K	SR3 Type III	120	(blank) Surface mount	PE Photoelectric cell, button type <sup>2</sup>	DBLXD Black	
	P3	50K	SR4 Type IV	208	<b>Shipped separately<sup>2</sup></b>	SF Single fuse (120, 277, 347V) <sup>3</sup>	DNAXD Natural aluminum	
	P4				240	BBW Surface-mounted back box	DF Double fuse (208, 240, 480V) <sup>3</sup>	DWHXD White
							DMG (no controls)	DSSXD Sandstone
				277		E20WC Emergency battery backup, CEC compliant (18W, -20°C) <sup>4</sup>	DBBTXD Textured dark bronze	
				347		E10WH Emergency battery backup, CEC compliant (10W, 5°C) <sup>4</sup>	DBLBSD Textured black	
				480		WLU Wet location door for up orientation <sup>5</sup>	DNATXD Textured natural aluminum	
						PIR Motion/ambient light sensor <sup>6</sup>	DWHGXD Textured white	
						DS Dual switching <sup>7</sup>	DSSTXD Textured sandstone	
						SPD Separate Surge Protection <sup>8</sup>		
						<b>Shipped separately</b>		
						VG Vandal guard		
						WG Wire guard		

### Emergency Battery Operation

The emergency battery backup (E20WC & E10WH options) is integral to the luminaire - no external housing required! This design provides reliable emergency operation while maintaining the aesthetics of the product. All E20WC & E10WH configurations include an independent secondary driver with an integral relay to immediately detect AC power loss.

The emergency battery will power the luminaire for a minimum duration of 90 minutes (maximum duration of three hours) from the time supply power is lost, per [International Building Code Section 1006](#) and [NFPA 101 Life Safety Code Section 7.9](#), provided luminaires are mounted at an appropriate height and illuminate an open space with no major obstructions.

The examples below show illuminance of 1 fc average and 0.1 fc minimum of the P1 power package Type IV product in emergency mode.



WSR P1 LED 40K SR4 MVOLT E20WC  
10' x 10' Gridlines  
8' and 12' Mounting Height

### NOTES

- MVOLT driver operates on any line voltage from 120-277V (50/60 Hz).
- Not available with 480V option.
- Single fuse (SF) requires 120V, 277V or 347V options. Double fuse (DF) requires 208V, 240V or 480V options.
- Not available with 347V or 480V. Not available with WLU.
- WLU not available with PIR, E20WC or E10WH.
- See PIR Table for default settings.
- Only available with P3 & P4 packages. Provides 50/50 luminaire operation via two independent drivers and light engines on two separate circuits. Not available with E20WC, E10WH, WLU, SF, or DF. When ordered with photocell (PE) or motion sensor (PIR), only the primary power source leads will be controlled.
- See electrical section on page 2 for more details.



## FEATURES & SPECIFICATIONS

**INTENDED USE** — Typical applications include corridors, lobbies, conference rooms and private offices.  
**CONSTRUCTION** — Galvanized steel mounting/plaster frame; galvanized steel junction box with bottom-hinged access covers and spring latches. Reflectors are retained by torsion springs.

Vertically adjustable mounting brackets with commercial bar hangers provide 3-3/4" total adjustment. Two combination 1/2"-3/4" and four 1/2" knockouts for straight-through conduit runs. Capacity: 8 (4 in, 4 out). No. 12 AWG conductors, rated for 90°C.

Accommodates 12"-24" joist spacing.

Passive cooling thermal management for 25°C standard; high ambient (40°C) option available. Light engine and drivers are accessible from above or below ceiling.

Max ceiling thickness 1-1/2".

**OPTICS** — LEDs are binned to a 3-step SDCM; 80 CRI minimum.

LED light source concealed with diffusing optical lens.

General illumination lighting with 1.0 S/MH and 55° cutoff to source and source image.

Self-flanged anodized reflectors in specular, semi-specular, or matte diffuse finishes. Also available in white and black painted reflectors.

**ELECTRICAL** — Multi-volt (120-277V, 50/60Hz) 0-10V dimming drivers mounted to junction box, 10% or 1% minimum dimming level available.

0-10V dimming fixture requires two (2) additional low-voltage wires to be pulled.

70% lumen maintenance at 50,000 hours.

**LISTINGS** — Certified to US and Canadian safety standards. Damp location standard (wet location, covered ceiling optional). ENERGY STAR® certified product.

**WARRANTY** — 5-year limited warranty. Complete warranty terms located at:

[www.acuitybrands.com/CustomerResources/Terms\\_and\\_conditions.aspx](http://www.acuitybrands.com/CustomerResources/Terms_and_conditions.aspx)

**Note:** Actual performance may differ as a result of end-user environment and application.

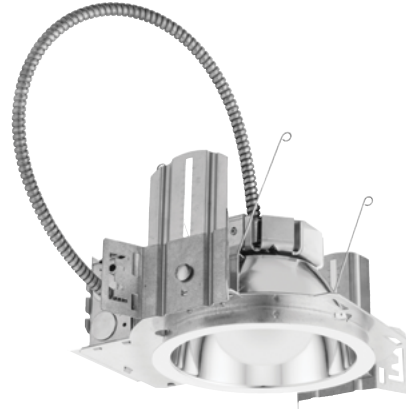
All values are design or typical values, measured under laboratory conditions at 25 °C.

Specifications subject to change without notice.

Catalog Number
Notes
Type

# LDN6

**6" OPEN and WALLWASH LED  
Non-IC  
New Construction Downlight**



A+ Capable options indicated by this color background.

### ORDERING INFORMATION

Lead times will vary depending on options selected. Consult with your sales representative.

**Example:** LDN6 35/15 L06AR LSS MVOLT EZ10

LDN6		Color temperature		Lumens <sup>1</sup>		Aperture/Trim Color		Finish	Voltage						
Series	LDN6 6" round	27/	2700K	05	500 lumens	25	2500 lumens	L06	Downlight	AR	Clear	LSS	Semi-specular	MVOLT	Multi-volt
		30/	3000K	10	1000 lumens	30	3000 lumens	LW6	Wallwash	WR <sup>2</sup>	White	LD	Matte diffuse	120	120V
		35/	3500K	15	1500 lumens	40	4000 lumens			BR <sup>2</sup>	Black	LS	Specular	277	277V
		40/	4000K	20	2000 lumens	50	5000 lumens							347 <sup>3</sup>	347V
		50/	5000K												

Driver	Options
GZ10 0-10V driver dims to 10%	SF <sup>4</sup> Single fuse
GZ1 0-10V driver dims to 1%	TRW <sup>5</sup> White painted flange
EZ10 0-10V eldoLED driver with smooth and flicker-free deep dimming performance down to 10%	TRBL <sup>5</sup> Black painted flange
EZ1 0-10V eldoLED driver with smooth and flicker-free deep dimming performance down to 1%	EL <sup>6</sup> Emergency battery pack with integral test switch
	ELR Emergency battery pack with remote test switch
	ELSD Emergency battery pack with self-diagnostics, integral test switch
	ELRSD Emergency battery pack with self-diagnostics, remote test switch
	E10WCP Emergency battery pack, 10W Constant Power, CA Title 20 compliant with integral test switch
	E10WCPR Emergency battery pack, 10W Constant Power, CA Title 20 compliant with remote test switch
	NPP16D <sup>7</sup> nLight® network power/relay pack with 0-10V dimming for non-eldoLED drivers (GZ10, GZ1).
	NPP16DER <sup>7</sup> nLight® network power/relay pack with 0-10V dimming for non-eldoLED drivers (GZ10, GZ1). ER controls fixtures on emergency circuit.
	N80 <sup>8</sup> nLight™ Lumen Compensation
	NPS80EZ <sup>7</sup> nLight® dimming pack controls 0-10V eldoLED drivers (EZ10, EZ1).
	NPS80EZER <sup>7</sup> nLight® dimming pack controls 0-10V eldoLED drivers (EZ10, EZ1). ER controls fixtures on emergency circuit.
	HAO <sup>11</sup> High ambient option
	CP <sup>12</sup> Chicago Plenum
	WL Wet Location, specify for exterior use applications
	RRL___ RELOC®-ready luminaire connectors enable a simple and consistent factory installed option across all ABL luminaire brands. Refer to RRL for complete nomenclature. Available only in RRLA, RRLB, RRLAE, and RRLC12S.
	NLTAIR2 <sup>9, 10</sup> nLight® Air enabled
	NLTAIRER2 <sup>9, 10</sup> nLight® AIR Dimming Pack Wireless Controls. Controls fixtures on emergency circuit
	USPOM US point of manufacture

Accessories: Order as separate catalog number.	
<a href="#">EAC ISSM 375</a>	Compact interruptible emergency AC power system
<a href="#">EAC ISSM 125</a>	Compact interruptible emergency AC power system
GRA68 JZ	Oversized trim ring with 8" outside diameter <sup>1</sup>
SCA6	Sloped ceiling adapter. Refer to <a href="#">TECH-SCA</a> for more options.

### Notes

- Overall height varies based on lumen package; refer to dimensional chart on page 3.
- Not available with finishes.
- Not available with emergency options.
- Must specify voltage 120V or 277V.
- Available with clear (AR) reflector only.
- Add "SD" for self-diagnostic option (i.e. ELSD)
- Specify voltage. ER for use with generator supply EM power. Will require an emergency hot feed and normal hot feed.
- Fixture begins at 80% light level. Must be specified with NPS80EZ or NPS80EZER. Only available with EZ10 and EZ1 drivers.
- Not available with CP, NPS80EZ, NPS80EZER, NPP16D, NPP16DER or N80 options.
- NLTAIR2 and NLTAIRER2 not recommended for metal ceiling installations.
- Fixture height is 6.5" for all lumen packages with HAO.
- Must specify voltage for 3000lm. 5000lm with marked spacing 24 L x 24 W x 14 H.



# D-Series LED Bollard



d#series

## Specifications

**Diameter:** 8" Round  
(20.3 cm)

**Height:** 42"  
(106.7 cm)

**Weight (max):** 27 lbs  
(12.25 kg)



Catalog  
Number

Notes

Type

Hit the Tab key or mouse over the page to see all interactive elements.

## Introduction

The D-Series LED Bollard is a stylish, energy-saving, long-life solution designed to perform the way a bollard should—with zero uplight. An optical leap forward, this full cut-off luminaire will meet the most stringent of lighting codes. The D-Series LED Bollard's rugged construction, durable finish and long-lasting LEDs will provide years of maintenance-free service.

## Ordering Information

**EXAMPLE: DSXB LED 16C 700 40K SYM MVOLT DDBXD**

DSXB LED										
Series	LEDs	Drive current	Color temperature	Distribution	Voltage	Control options	Other options	Finish (required)		
DSXB LED	<b>Asymmetric</b> 12C 12 LEDs <sup>1</sup>	350 350 mA	30K 3000 K	ASY Asymmetric <sup>1</sup> SYM Symmetric <sup>2</sup>	MVOLT <sup>5</sup> 120 <sup>5</sup> 208 <sup>5</sup> 240 <sup>5</sup> 277 <sup>5</sup> 347 <sup>4</sup>	<b>Shipped installed</b> PE Photoelectric cell, button type DMG 0-10V dimming driver (no controls) ELCW Emergency battery backup <sup>6</sup>	<b>Shipped installed</b> SF Single fuse (120, 277, 347V) <sup>4,7</sup> DF Double fuse (208, 240V) <sup>4,7</sup> H24 24" overall height H30 30" overall height H36 36" overall height FG Ground-fault festoon outlet L/AB Without anchor bolts L/AB4 4-bolt retrofit base without anchor bolts <sup>8</sup>	DWHXD White DNAXD Natural aluminum DDBXD Dark bronze DBLXD Black DDBTXD Textured dark bronze DBLBXD Textured black DNATXD Textured natural aluminum DWHGXD Textured white		
		450 450 mA <sup>3,4</sup>	40K 4000 K							
	<b>Symmetric</b> 16C 16 LEDs <sup>2</sup>	530 530 mA	50K 5000 K							
		700 700 mA	AMBPC Amber phosphor converted AMBLW Amber limited wavelength <sup>3,4</sup>							

## Accessories

Ordered and shipped separately.

MRAB U Anchor bolts for DSXB<sup>8</sup>

## NOTES

- 1 Only available in the 12C, ASY version.
- 2 Only available in the 16C, SYM version.
- 3 Only available with 450 AMBLW version.
- 4 Not available with ELCW.
- 5 MVOLT driver operates on any line voltage from 120-277V (50/60 Hz). Specify 120, 208, 240 or 277 options only when ordering with fusing (SF, DF options), or photocontrol (PE option).
- 6 Not available with 347V. Not available with fusing. Not available with 450 AMBLW.
- 7 Single fuse (SF) requires 120, 277, or 347 voltage option. Double fuse (DF) requires 208 or 240 voltage option.
- 8 MRAB U not available with L/AB4 option.

