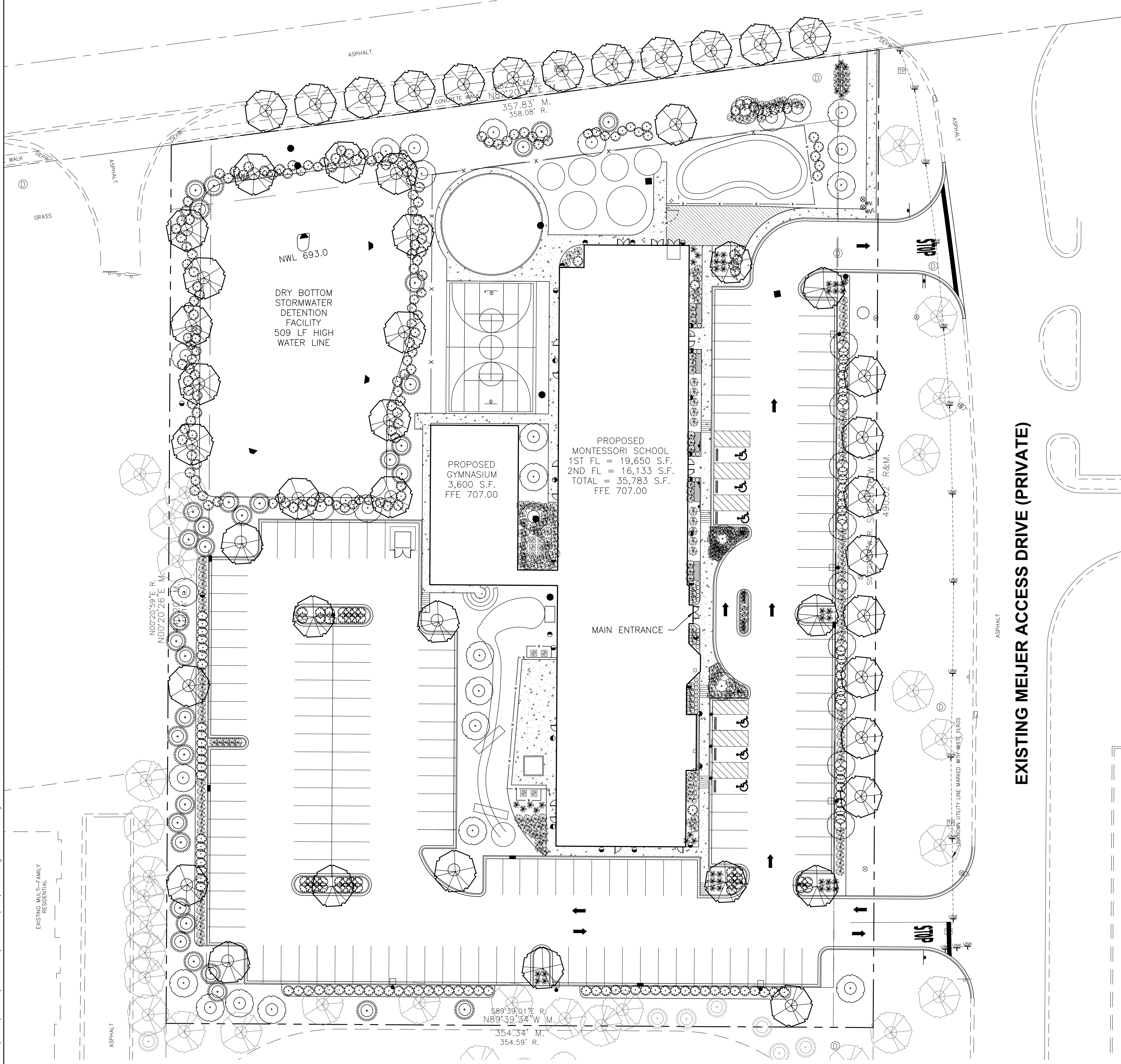


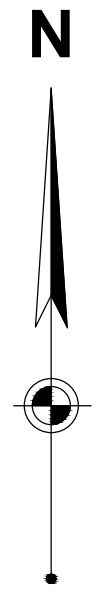
Layout Tab Name: C500 LANDSCAPE PLAN, Images: A3 01.jpg; zoom aerial.jpg; 20150729 14 056.jpg; . Xrefs: 074235-X.dwg; 074235-P.dwg; 074235-TBLK.dwg  
 Lost Saved By: swift, 10/3/2015 3:31:28 PM  
 G:\DE\Clients\Land of Learning\074235 Aurora\4.0 Disciplines\Civil\Cadd\Exhibits\Landscape plan.dwg Plotted By: Swift, Ted Plotted: October 3, 2015, 3:33:12 PM

LANDSCAPE PLAN FOR CASA DEI BAMBINI



**LANDSCAPE DATA TABLE : CTEs PROVIDED**

	CTE Value	Count Provided	Total CTEs Provided
Canopy Trees	1	49	49
Evergreens	3	42	14
Understory Trees	3	33	11
Deciduous Shrubs	20	300	15
Evergreen Shrubs	20	214	11
TOTAL:		638	100



**PLANTING MATERIALS TABLE: LANDSCAPE PLAN**

Note: Symbols are blackline for proposed grayscale for existing

Canopy Trees (minimum size 2.5 caliper) Count:

49

Evergreens (minimum size 6 feet) Count:

42

Understory Trees (minimum size 2.5 caliper or 8 feet if multi-stemmed) Count:

33

Deciduous Shrubs (minimum of 18 inches) Count:

300

Evergreen Shrubs (minimum of 18 inches) Count:

214

Ornamental Grasses Count:

55

Perennials Count:

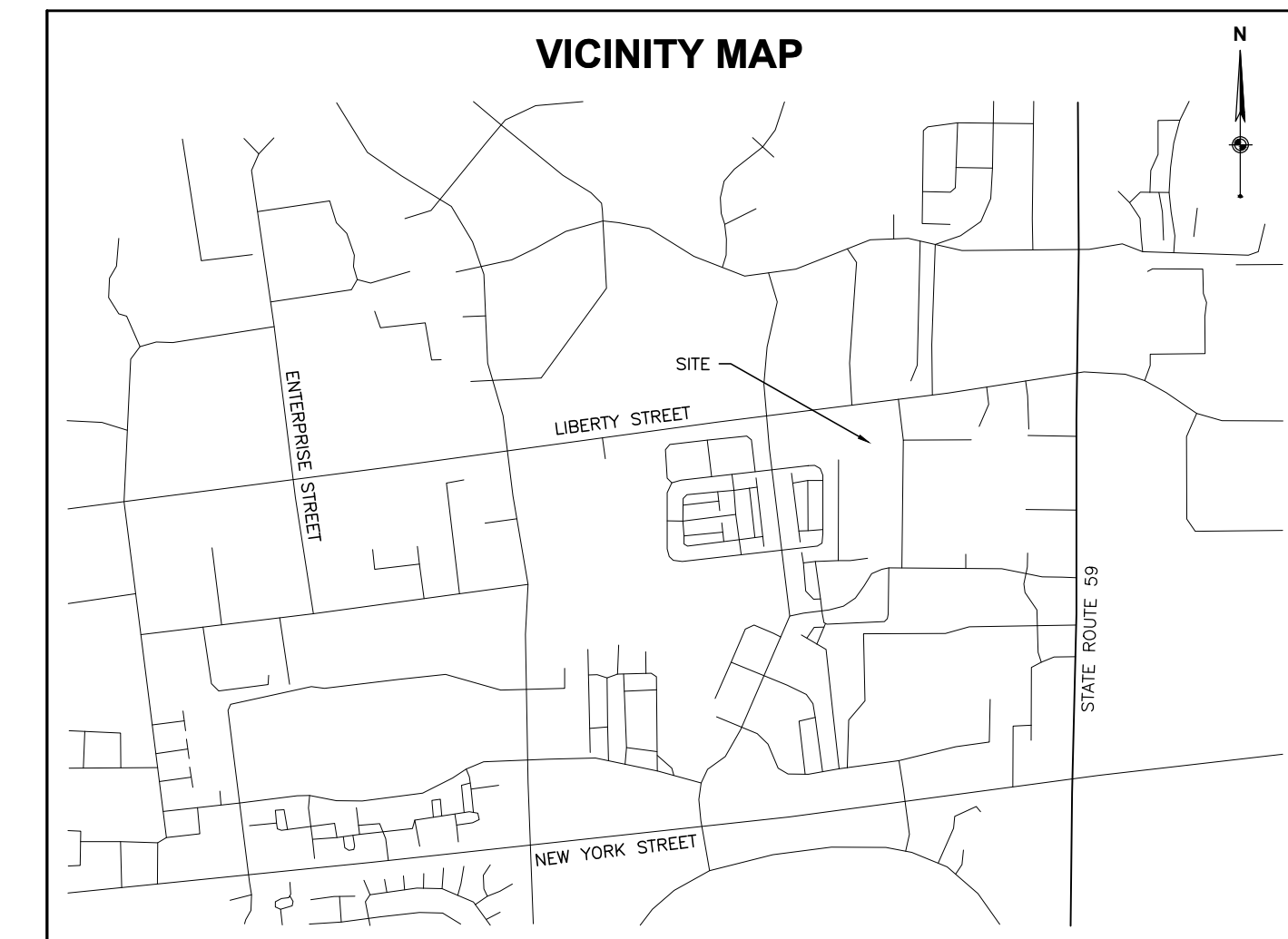
37

Annuals Count:

0

Groundcover Count:

6



<p><b>WOOLPERT</b> DESIGN   ECOSYSTEMAL   INFRASTRUCTURE</p> <p>1815 South Meyers Road Suite 120 Oakbrook Terrace, IL 60181 630.424.9080 FAX: 630.495.3731</p> <p>OWNER AND PETITIONER: <b>FHS DESIGN &amp; BUILD</b> 2010 W FULTON STREET, SUITE F-240, CHICAGO, IL 60612</p>	<p>PROJECT No: 074235</p> <p>DATE 07/29/15</p> <p>DES. TS</p> <p>DR. DH</p> <p>CKD. CP</p>	<p>REVISION</p>
	<p>NO. DATE</p>	<p>ISSUED FOR CITY REVIEW 07/30/15</p>
<p><b>SITE IMPROVEMENT PLANS</b> <b>LAND OF LEARNING, LLC</b> 4393 LIBERTY STREET AURORA, ILLINOIS</p> <p><b>LANDSCAPE PLAN</b></p>		
<p>SHEET NO. <b>C500</b></p>		



# City of Aurora

Planning and Zoning Division 1 S. Broadway, 2nd Floor, Aurora, IL  
phone (630) 256-3080 fax (630) 256-3081 email COAPlanning@aurora-il.org

## Landscape Material Worksheet

---

**Project Number:** 2015.058

**Petitioner:** FHS Design Build LLC

### Proposed Canopy Trees

Family	Genus	Species	Common Name
Sapindaceae	Acer	Freemanii 'Jeffersed'	Autumn Blaze Maple
Platanaceae	Platanus	Acerifolia	London Plane Tree
Fagaceae	Quercus	Bicolor	Swamp White Oak
Cupressaceae	Taxodium	Distichum	Bald Cypress
Tiliaceae	Tilia	Americana 'Redmond'	Redmond American Linden

### Proposed Evergreen Trees

Family	Genus	Species	Common Name
Pinaceae	Picea	Glauca 'Densata'	Black Hills Spruce
Pinaceae	Pinus	Flexis	Limber Pine

### Proposed Understory Trees

Family	Genus	Species	Common Name
Rosaceae	Amelanchier	Grandiflora 'Autumn Brilliance'	Apple Serviceberry
Oleaceae	Chionanthus	Virginicus	White Fringetree
Betulaceae	Ostrya	Virginiana	Ironwood
Lauraceae	Sassafras	albidum	Sassafras

### Proposed Deciduous Shrubs

Family	Genus	Species	Common Name
Rosaceae	Aronia	Arbutifolia 'Brilliantissima'	Brilliant Red Chokeberry
Cornaceae	Cornus	Sericea 'Isanti'	Red Twig Dogwood
Hydrangeaceae	Hydrangea	Paniculata 'Limelight'	Limelight Hydrangea
Rosaceae	Physocarpus	Opulifolius 'Seward'	Summer Wine Ninebark
Anarcardiaceae	Rhus	Aromatica 'Gro-Low'	Gro-Low Fragrant Sumac
Abxaceae	Viburnum	Carlessii	Dwarf Koreanspice Viburnum

### Proposed Evergreen Shrubs

Family	Genus	Species	Common Name
Cupressaceae	Juniperus	chinensis 'Sea Green'	Sea Green Juniper
Cupressaceae	Juniperus	chinensis sargentii 'Viridis'	Green Sargent Juniper
Pinaceae	Pinus	Mugo 'Compacta'	Compact Mugo Pine
Taxaceae	Taxus	Media 'Densiformis'	Dense Yew
Cupressaceae	Thuja	accidentalis 'Woodwardi'	Woodward Globe Arborvitae

For Trees no more than three of the same species shall be clustered together. And the goal should be that no Family shall account for more than 30%, no Genus shall account for more than 20%, and no Species shall account for more than 10% of any Planting Material Type.

The Landscape Materials are subject to review and approval by the Review Planner.

Verified By: \_\_\_\_\_ Date: \_\_\_\_\_