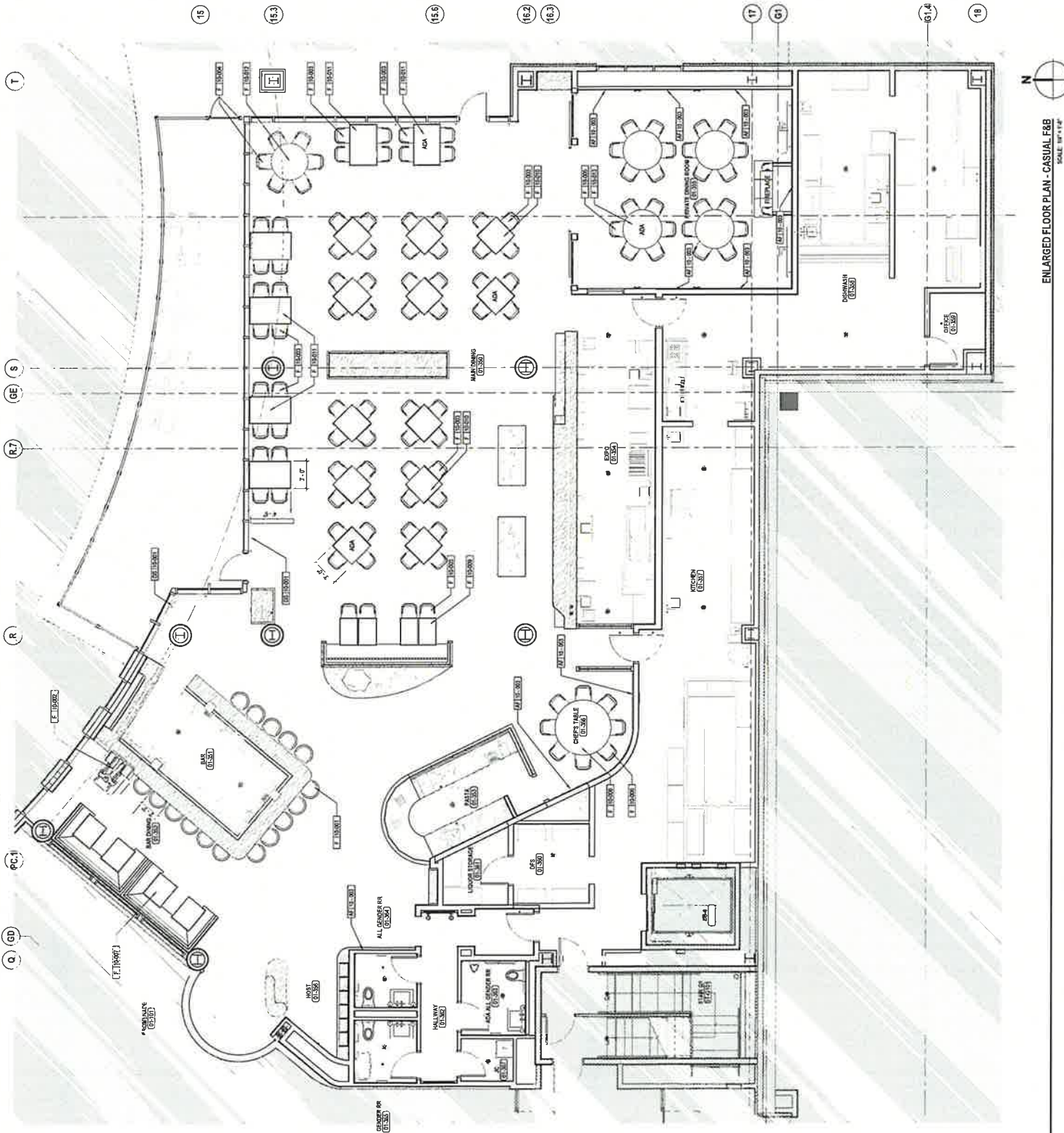


- GENERAL NOTES**
- REFER TO CIVIL, LANDSCAPE, STRUCTURAL, MECHANICAL, ELECTRICAL, PLUMBING, SERVICE, LIGHTING, LOW VOLTAGE AND SECURITY DRAWINGS FOR ADDITIONAL INFORMATION.
 - REFER TO GEOTECHNICAL REPORT FOR ADDITIONAL INFORMATION.
 - ALL DIMENSIONS SHOWN ARE TO FINISH CORUM BOARD CONCRETE OR MASSARY WALLS, UNLESS NOTED OTHERWISE.
 - SEE SHEET 02.01 FOR GENERAL NOTES, ABBREVIATIONS AND LEGENDS.
 - SEE SHEETS 02.02, 02.03 FOR WALL TYPES.
 - REFER TO STORY POLE FOR FINISH FLOOR ELEVATION DATA.
 - REFER TO MANAGED FURNITURE SPECIFICATIONS, FINISH AND TYPICAL FURNITURE INFORMATION.
 - REFER TO SHEET 02.02 OR BACK OF HOUSE (BOH) ROOM FINISH INFORMATION.
 - REFER TO SHEET 02.02 FOR DOOR SCHEDULE.
 - REFER TO SHEET 02.02 FOR WALL AND FLOOR PENETRATION DETAILS.
 - REFER TO BUILDING ELEVATIONS FOR GLASS AND FINISH TYPE.
- WALL LEGEND**
- EXTERIOR WALL TO BE EXTERIOR
 - LOCKER PARTITION
 - LOCKER PARTITION
 - 3" LOCKER PARTITION
 - NOT IN SCOPE
- KEYNOTE LEGEND**
- XXX



ENLARGED FLOOR PLAN - CASUAL F&B
 SCALE: 1/8" = 1'-0"

