

- SITE PLAN NOTES**
1. REFER TO CIVIL DRAWINGS FOR SITE UTILITIES, FINAL GRADING, DRAINAGE, EROSION CONTROL AND PAVER AREA PLANS.
 2. REFER TO LANDSCAPE DRAWINGS FOR PLAZA LAYOUT, PLANTING AND SITE MATERIALS.
 3. REFER TO ELECTRICAL DRAWINGS FOR SITE LIGHTING.
 4. ALL FINAL GRADING TO BE PER CIVIL DRAWINGS, ARCHITECTURAL WORK SUCH AS WALLS TO BE ADJUSTED AS REQUIRED FOR FINAL GRADES.

SITE PLAN LEGEND			
SYMBOL	DESCRIPTION	SYMBOL	DESCRIPTION
EXISTING	CONCRETE PAVEMENT, REFER TO CIVIL DRAWINGS		ARTIFICIAL TURF, REFER TO LANDSCAPE DRAWINGS
NEW	ICE MELT SYSTEM AT APPARATUS BAY, REFER TO MECHANICAL		NEW TREE, REFER TO LANDSCAPE DRAWINGS
EXISTING	ASPHALT, REFER TO CIVIL DRAWINGS		EXISTING TREE
NEW	NEW PAVERS (COLORS TO MATCH EXISTING), REFER TO CIVIL		LANDSCAPE AREA, REFER TO LANDSCAPE DRAWINGS
EXISTING	DECOMPOSED GRANITE, REFER TO LANDSCAPE DRAWINGS		

PARKING SPACES:
ADA SPACES: 7 TOTAL 6 STANDARD + 1 VAN
2 ADA STANDARD IN NORTH PARKING
4 ADA STANDARD + 1 ADA VAN SPACE SOUTH PARKING

SITE PLAN KEYNOTE LEGEND	
MARK	DESCRIPTION
01	UNLEADED FUEL STATION WITH CANOPY REFER TO CIVIL AND FUEL STATION DRAWINGS
02	RELOCATED BIKE RACK
03	NEW REDIRECTED ASPHALT BIKE PATH REFER TO CIVIL DRAWINGS
04	CONCRETE RETAINING WALL REFER TO CIVIL DRAWINGS
05	6'-0" H SECURITY FENCE AROUND PARKING PERIMETER, BOD: AMERISTAR MONTAGE II
06	GENERATOR ENCLOSURE, COVERED, ALIGN EXTERIOR FINISH WITH EMA GARAGE REFER TO SHEET A0.5
07	POTENTIAL SOLAR LOCATION 2,100 SF
08	EXISTING STORMWATER EASEMENT, REFER TO CIVIL DRAWINGS
09	BASE BID: PROVIDE CURB CUT ALTERNATE #1 - PROVIDE DRIVE AND LAUNCH FOR BOAT/DIVE TRAINING
10	DIESEL STATION REFER TO CIVIL AND FUEL STATION DRAWINGS
11	TRASH ENCLOSURE, REFER TO SHEET A0.5
12	PATHWAY FROM STAFF PARKING
13	STRIPPE PEDESTRIAN CROSSING, REFER TO CIVIL DRAWINGS
14	BERMED GRADING AREA WITH LANDSCAPING FOR SCREENING, REFER TO CIVIL AND LANDSCAPE DRAWINGS
15	2' DECOMPOSED GRANITE AROUND BUILDING, TYP. REFER TO LANDSCAPE DRAWINGS
16	SLOTTED DRAIN, REFER TO CIVIL DRAWINGS
17	RECTANGULAR RAPID FLASH BEACON TIED TO EMERGENCY VEHICLE PREEMPTION, PURVIS SYSTEM. COORDINATE WITH PURVIS SYSTEM DRAWINGS, REFER TO CIVIL DRAWINGS
18	FLAG POLE, REFER TO LANDSCAPE DETAILS
19	BRICK VENEER PRIVACY WALL, REFER TO SHEET A0.5
20	CONCRETE AND GRATE CONSTRUCTION TO MATCH EXISTING, REFER TO CIVIL DRAWINGS
22	RECONSTRUCT SIGNAGE PORTION OF MONUMENT SIGN AT CAMPUS ENTRY, REFER TO SHEET A0.5
24	EXISTING COMED DISTRIBUTION TO REMAIN
25	EXISTING MEDIA BOX TO REMAIN
26	PARKING TO BE EXTENDED, PAVERS TO MATCH EXISTING UNILOC ECO-OPTILOC SERIES 3000 CHARDONNAY TAN, REFER TO CIVIL DRAWINGS
27	ACTIVE LOADING AREA
28	CONCRETE PATIO, REFER TO CIVIL DRAWINGS
30	SECURE CANTILEVER GATE, REFER TO SHEET A0.5
31	BERMED GRADING AREA, REFER TO CIVIL DRAWINGS
32	PROPERTY LINE TO BE CONSOLIDATED FOR COMBINED LOT WITH AURORA POLICE DEPARTMENT, REFER TO PLAT OF CONSOLIDATION
37B	7" DIAMETER AND 4'-0" H CONCRETE BOLLARDS, COLOR RED, REFER TO A0.5 FOR DETAILS
49	ANTENNA TOWER WITH RADIO SERVICES SEE SCOPE NOTES THIS SHEET
50	ACCESSIBLE PARKING ONLY SIGN
51	NEW ELECTRICAL TRANSFORMER, REFER TO ELECTRICAL
52	NEW FIRE HYDRANT, REFER TO CIVIL DRAWINGS

- ANTENNA SCOPE NOTES:**
1. ANTENNA TOWER WITH RADIO SERVICES, PROVIDED AND INSTALLED UNDER SEPARATE CONTRACT. ANTENNA BASE IS DELEGATED DESIGN BY ANTENNA CONTRACTOR.
 2. COORDINATE INSTALLATION WITH OWNER'S CONTRACTOR TO FACILITATE COMPLETE AND OPERATING SYSTEM.
 3. ELECTRICAL CONTRACTOR TO PROVIDE ALL NECESSARY INFRASTRUCTURE, INCLUDING A MINIMUM OF (4) 4" EMPTY CONDUITS ROUTED UNDERGROUND TO MDF ROOM, FOR INTEGRATED WALL ENTRY/ GROUND SYSTEM.
 4. STRUCTURAL SUPPORT AND FOUNDATIONS SYSTEMS PROVIDED UNDER SEPARATE CONTRACT.

CITY OF AURORA
FIRE DEPARTMENT HEADQUARTERS
1250 E Indian Trail Rd
Aurora, IL 60505

COPYRIGHT © CORDOGAN CLARK & ASSOCIATES, INC. 2025
CC JOB NUMBER 231080
DATE 2025.02.27

REVISIONS:		
#	Description	Date
1	PERMIT RESPONSE 1	01.22.2025
2	ADDENDUM 1	02.14.2025
3	ADDENDUM 2	02.21.2025
5		

DRAWING TITLE:
ARCHITECTURAL
SITE PLAN

A0.1

COPYRIGHT ©: CORDOGAN CLARK & ASSOCIATES, INC. 20

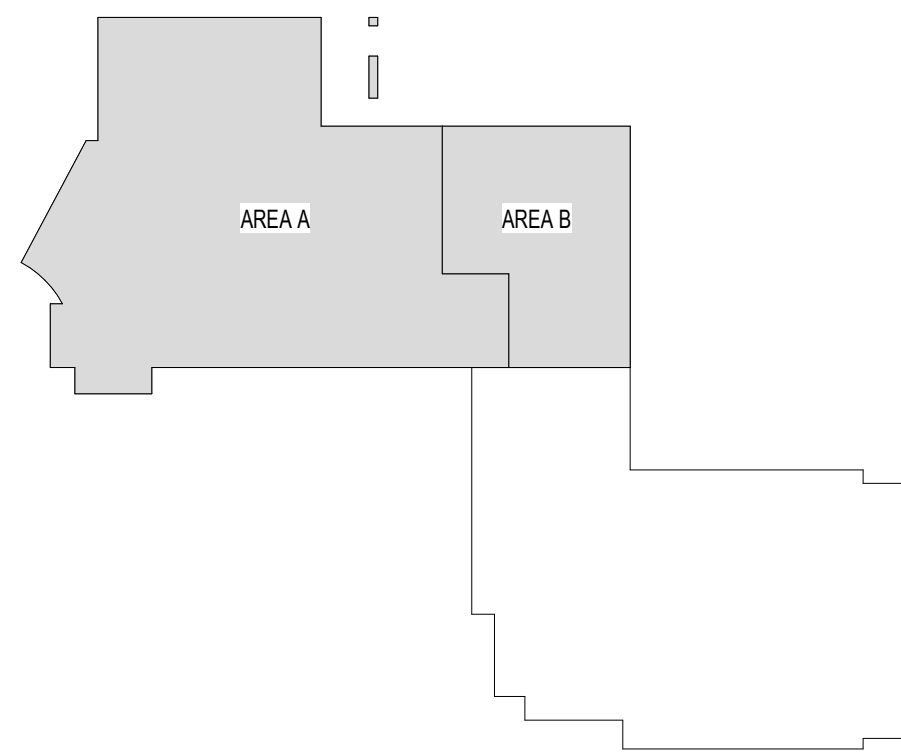
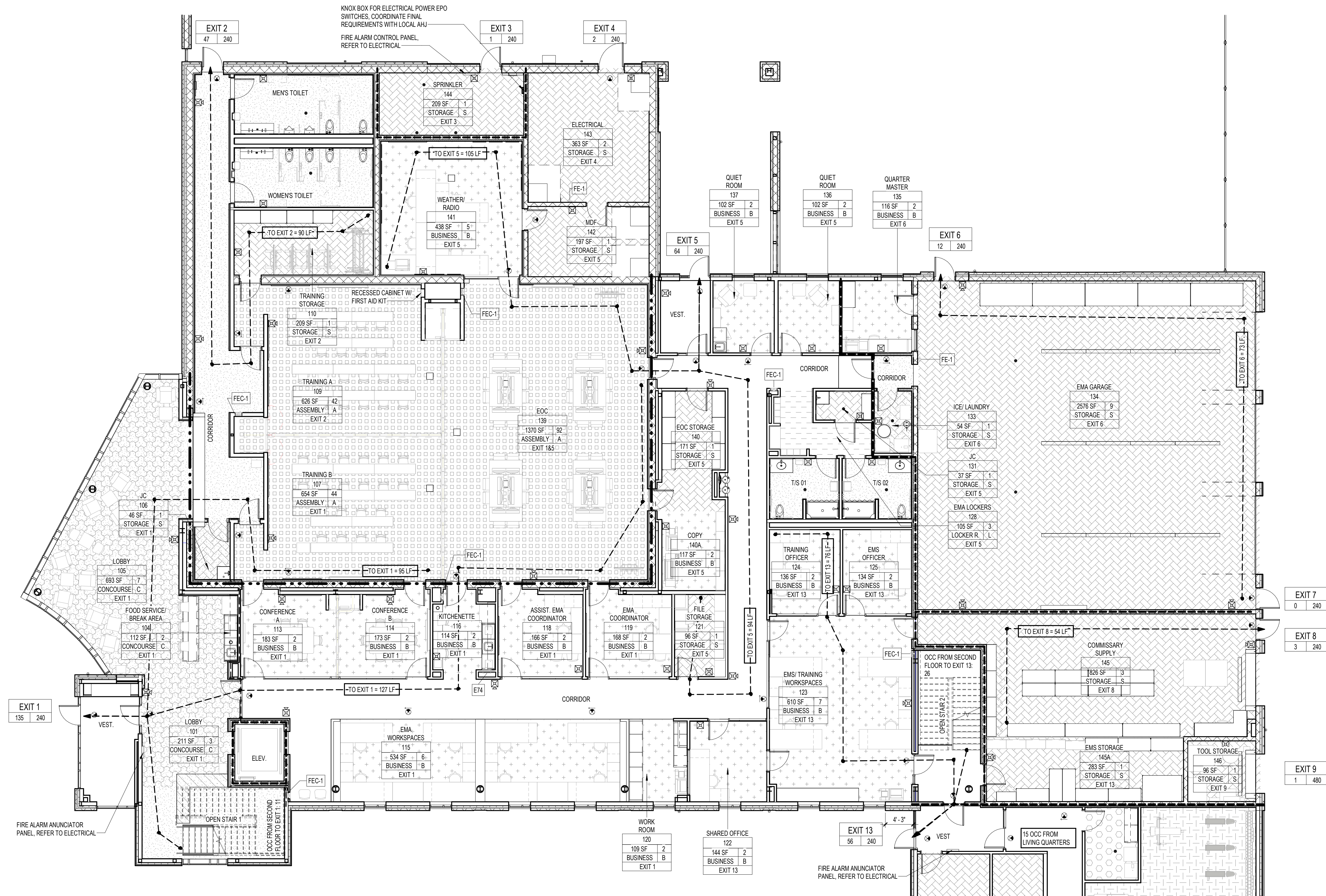
DATE 2025.02

#	Description	Date
	PERMIT RESPONSE 1	01.22.14
	ADDENDUM 1	02.14.14
	PERMIT RESPONSE 2	04.08.14

DRAWING TITLE:

SAFETY
REFERENCE PLAN -
FIRST FLOOR -
AREA A/B

G2.1



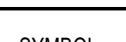
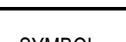
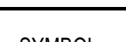
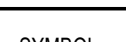
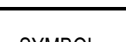
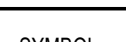
KEY PLAN - NTS

 1 LIFE SAFETY PLAN - FIRST FLOOR - AREAS A & E
1/8" = 1'-0"

SAFETY REFERENCE PLAN GENERAL NOTES

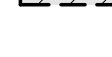
1. ALL PENETRATIONS WITHIN FIRE RATED WALLS ARE TO BE SEALED WITH FIRE CAULKING TO MAINTAIN THE SPECIFIED U.L. DESIGN. CONTRACTOR RESPONSIBLE FOR THE PENETRATION IS RESPONSIBLE FOR THE FIRE CAULKING INSTALLATION.
2. VERIFY THE LOCATIONS OF PORTABLE FIRE EXTINGUISHERS WITH THE FIRE INSPECTOR DURING ROUGH INSPECTIONS.
3. ADDITIONAL MEANS OF EGRESS ILLUMINATION DEVICES AND EXIT SIGNS MAY BE ADDED BASED UPON FIELD INSPECTION, OR AS DIRECTED BY AHJ.




OCCUPANCY LEGEND

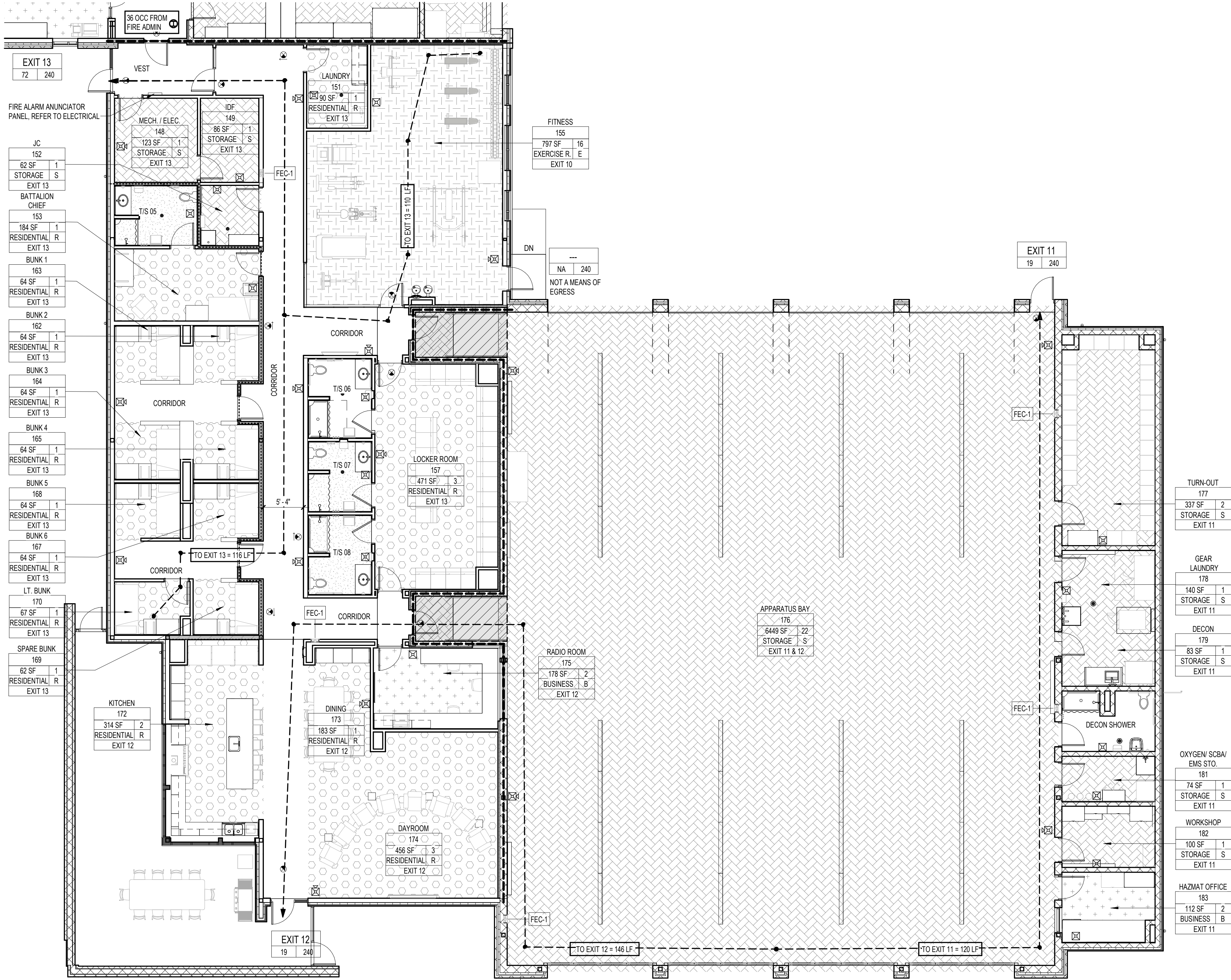
SYMBOL	CODE REQUIREMENT	SYMBOL	CODE REQUIREMENT
	ASSEMBLY - UNCONCENTRATED 15 NSF PER PERSON		CONCOURSE 100 GSF PER PERSON
	BUSINESS 100 GSF PER PERSON		STORAGE / MECHANICAL / EQUIPMENT 300 GSF PER PERSON
	RESIDENTIAL - SLEEPING ROOMS 200 GSF PER PERSON		EXERCISE ROOM 50 GSF PER PERSON

SYMBOL LEGEND

FIRE RATED PARTITION LEGEND	FIRE RATING	CONSTRUCTION	FIRE TEST NO
----- 30 MIN RATED FIRE PARTITION	30 MIN / 1 HOUR	MTL STUD WALLS	UL NO 419
--- 1 HR SMOKE PARTITION	1 HOUR	MTL STUD WALLS	UL NO 419
----- 1 HR RATED FIRE PARTITION	1 HOUR	MASONRY WALLS	UL NO. U906
----- 2 HR RATED FIRE PARTITION (STORM SHELTER)	2 HOUR	MASONRY WALLS	UL NO. U905

	1 HOUR RATED CEILING	FE-1	NEW WALL-MOUNTED FIRE EXTINGUISHER AND BRACKET (BY CONTRACTOR)
---XXX---	EGRESS TRAVEL DISTANCES IN FEET	FEC-1	NEW RECESSED FIRE EXTINGUISHER CABINET WITH FIRE EXTINGUISHER (BY CONTRACTOR)
<div><div>EXIT #</div><div>ACT MAX</div></div>	EXIT NUMBER MAXIMUM CAPACITY TO EXIT ACTUAL NUMBER OF OCCUPANTS EXITING	AED	NEW RECESSED AED CABINET (BY GENERAL PRIME) WITH AED DEVICE (BY OWNER)

Name	ROOM NAME & NUMBER		<u>EXIT SIGN</u> REFER TO ELECTRICAL DRAWINGS
10'	AREA IN SQUARE FEET		
500 SF	TOTAL NUMBER OF OCCUPANTS		
BUSINESS	FUNCTION OF SPACE		
EXIT 1	EXIT NUMBER TO EXIT FROM SPACE		

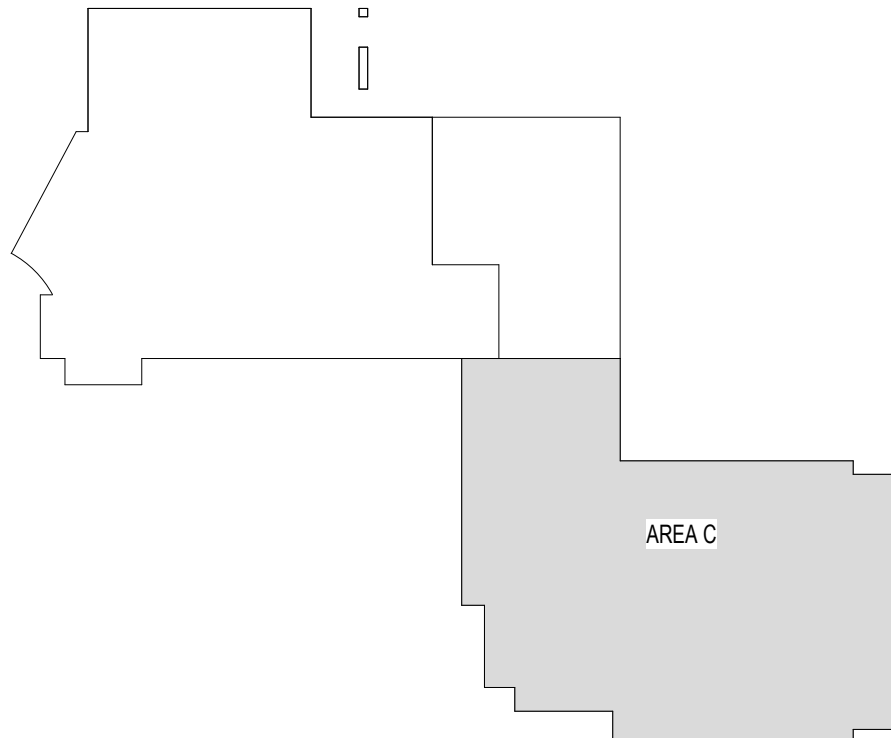


1 LIFE SAFETY PLAN - AREA C
1/8" = 1'-0"

- SAFETY REFERENCE PLAN GENERAL NOTES**
1. ALL PENETRATIONS WITHIN FIRE RATED WALLS ARE TO BE SEALED WITH FIRE CAULKING TO MAINTAIN THE SPECIFIED U.L. DESIGN. CONTRACTOR RESPONSIBLE FOR THE PENETRATION IS RESPONSIBLE FOR THE FIRE CAULKING INSTALLATION.
 2. VERIFY THE LOCATIONS OF PORTABLE FIRE EXTINGUISHERS WITH THE FIRE INSPECTOR DURING ROUGH INSPECTIONS.
 3. ADDITIONAL MEANS OF EGRESS ILLUMINATION DEVICES AND EXIT SIGNS MAY BE ADDED BASED UPON FIELD INSPECTION, OR AS DIRECTED BY AHJ.

OCCUPANCY LEGEND			
SYMBOL	CODE REQUIREMENT	SYMBOL	CODE REQUIREMENT
	ASSEMBLY - UNCONCENTRATED 15 NSF PER PERSON		CONCOURSE 100 GSF PER PERSON
	BUSINESS 100 GSF PER PERSON		STORAGE / MECHANICAL / EQUIPMENT 300 GSF PER PERSON
	RESIDENTIAL - SLEEPING ROOMS 200 GSF PER PERSON		EXERCISE ROOM 50 GSF PER PERSON

SYMBOL LEGEND			
FIRE RATED PARTITION LEGEND		FIRE RATING	CONSTRUCTION
		30 MIN / 1 HOUR	MTL STUD WALLS
		1 HOUR	MTL STUD WALLS
		1 HOUR	MASONRY WALLS
		2 HOUR	MASONRY WALLS
		FE-1	NEW WALL MOUNTED FIRE EXTINGUISHER AND BRACKET (BY CONTRACTOR)
		FEC-1	NEW RECESSED FIRE EXTINGUISHER CABINET WITH FIRE EXTINGUISHER (BY CONTRACTOR)
		AED	NEW RECESSED AED CABINET (BY GENERAL PRIME) WITH AED DEVICE (BY OWNER)
		EXIT SIGN	REFER TO ELECTRICAL DRAWINGS
		AUDIO / VISUAL DEVICE	REFER TO ELECTRICAL DRAWINGS
		VISUAL DEVICE	REFER TO ELECTRICAL DRAWINGS



1 KEY PLAN - NTS

CITY OF AURORA
FIRE DEPARTMENT HEADQUARTERS
1250 E Indian Trail Rd
Aurora, IL 60505

COPYRIGHT © CORDOGAN CLARK & ASSOCIATES, INC. 2025

CC JOB NUMBER 231080

DATE 2025.02.27

REVISIONS:

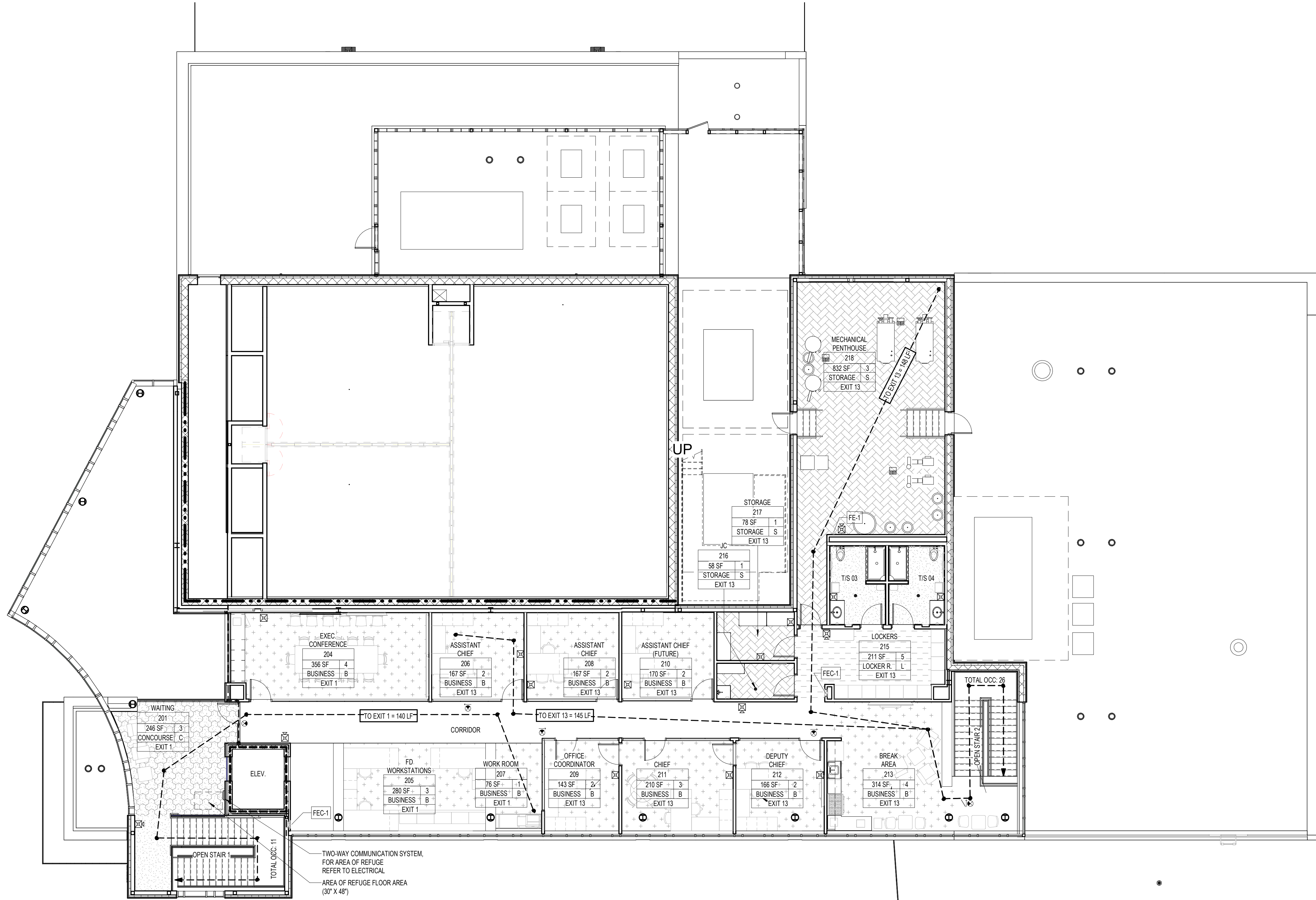
#	Description	Date
1	PERMIT RESPONSE 1	01.22.2025
4	PERMIT RESPONSE 2	04.08.2025

DRAWING TITLE:

SAFETY
REFERENCE PLAN -
FIRST FLOOR -
AREA C

G2.2

1 LIFE SAFETY PLAN - SECOND FLOOR - AREA A
1/8" = 1'-0"



OCCUPANCY LEGEND			
SYMBOL	CODE REQUIREMENT	SYMBOL	CODE REQUIREMENT
	ASSEMBLY - UNCONCENTRATED 15 NSF PER PERSON		CONCOURSE 100 GSF PER PERSON
	BUSINESS 100 GSF PER PERSON		STORAGE / MECHANICAL / EQUIPMENT 300 GSF PER PERSON
	RESIDENTIAL - SLEEPING ROOMS 200 GSF PER PERSON		EXERCISE ROOM 50 GSF PER PERSON

SYMBOL LEGEND			
FIRE RATED PARTITION LEGEND		FIRE RATING	FIRE TEST NO
		30 MIN / 1 HOUR	MTL STUD WALLS UL NO.419
		1 HOUR	MTL STUD WALLS UL NO.419
		1 HOUR	MASONRY WALLS UL NO. U906
		2 HOUR	MASONRY WALLS UL NO. U905
		1 HOUR RATED CEILING	FE-1 NEW WALL-MOUNTED FIRE EXTINGUISHER AND BRACKET (BY CONTRACTOR)
		EGRESS TRAVEL DISTANCES IN FEET	FEC-1 NEW RECESSED FIRE EXTINGUISHER CABINET WITH FIRE EXTINGUISHER (BY CONTRACTOR)
		EXIT # ACT MAX	AED NEW RECESSED AED CABINET (BY GENERAL PRIME) WITH AED DEVICE (BY OWNER)
		Name ROOM NAME & NUMBER	EXIT SIGN REFER TO ELECTRICAL DRAWINGS
		500 SF AREA IN SQUARE FEET	AUDIO/VISUAL DEVICE REFER TO ELECTRICAL DRAWINGS
		25 TOTAL NUMBER OF OCCUPANTS	VISUAL DEVICE REFER TO ELECTRICAL DRAWINGS
		BUSINESS FUNCTION OF SPACE	
		EXIT 1 EXIT NUMBER TO EXIT FROM SPACE	

