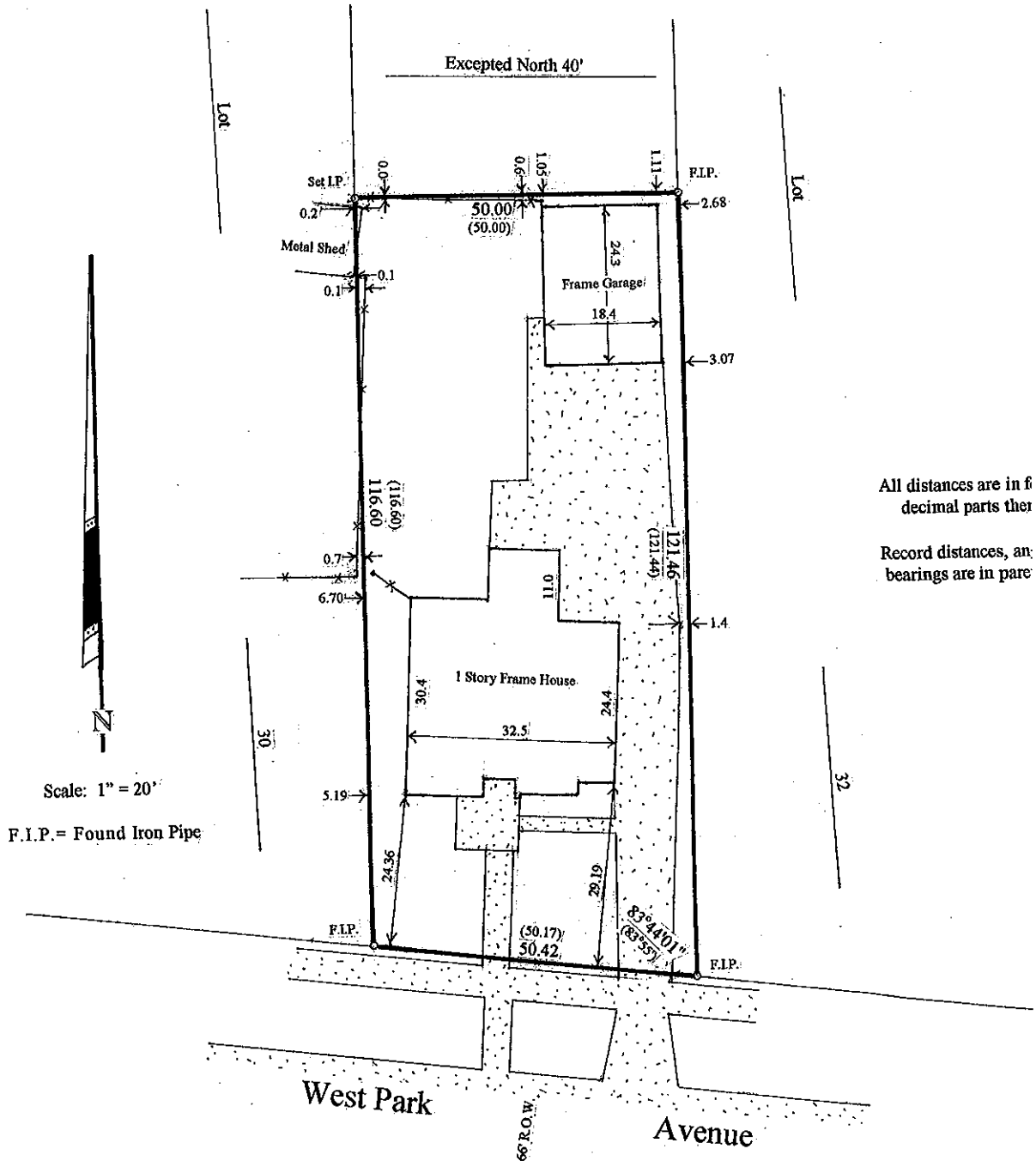


Plat of Survey

LOT 31 (EXCEPT THE NORTH 40 FEET THEREOF) IN BLOCK 2 OF J. R. AND J. C. HANNA'S ADDITION TO AURORA, IN THE CITY OF AURORA, KANE COUNTY, ILLINOIS.

Commonly known as 333 West Park Avenue, Aurora.



All distances are in f decimal parts ther
Record distances, an bearings are in pare

Scale: 1" = 20'

F.I.P. = Found Iron Pipe

State of Illinois)
County of Kendall)

SS

I Thomas J. Todd, an Illinois Professional Land Surveyor, do hereby certify that the plat shown hereon,