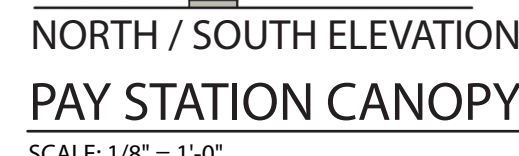
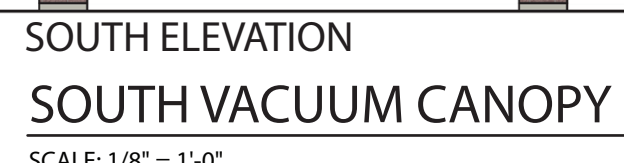
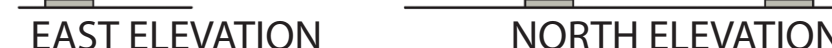
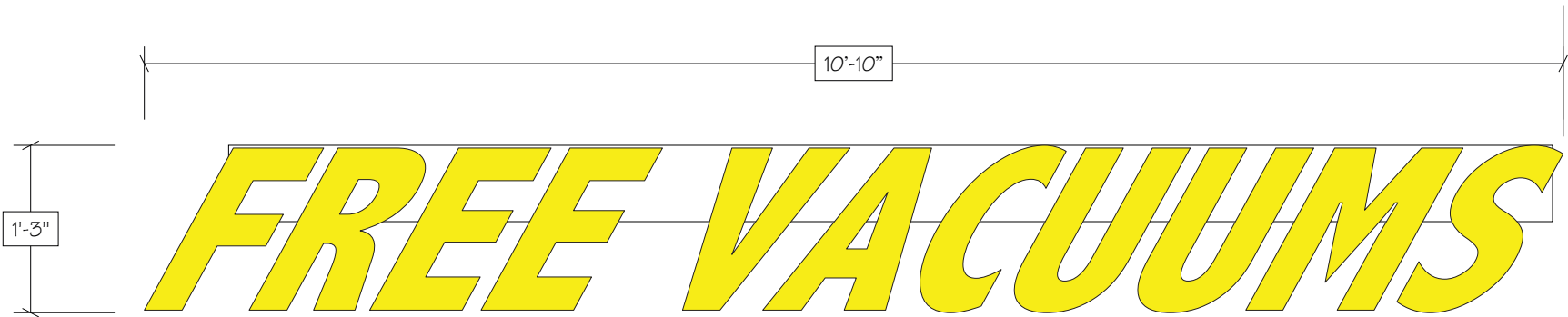


JETBRITE EXPRESS CAR WASH
1427 NORTH FARNSWORTH AVENUE, AURORA, ILLINOIS 60505



ENDING ROOM / REFUSE ENCLOSURE ELEVATIONS
RAY STATION CANOPY ELEVATIONS
VACUUM CANOPIES ELEVATIONS

All Signs Shall Be Installed In Accordance With N.E.C. Article 600
Engineering Specifications
All Signs Fabricated as per
A.S.A Specifications & 2014 I.B.C.
Electrical Specifications
All Signs Fabricated as per
2015 N.E.C. Specifications

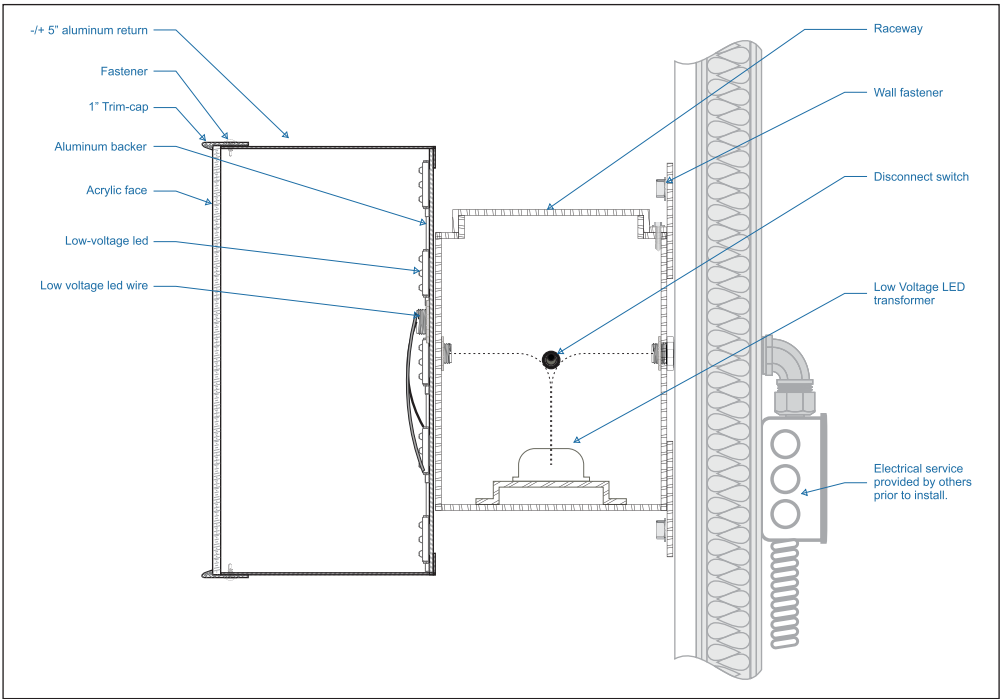


INDIVIDUAL ILLUMINATED LETTERS ON RACEWAY - 2 REQUIRED

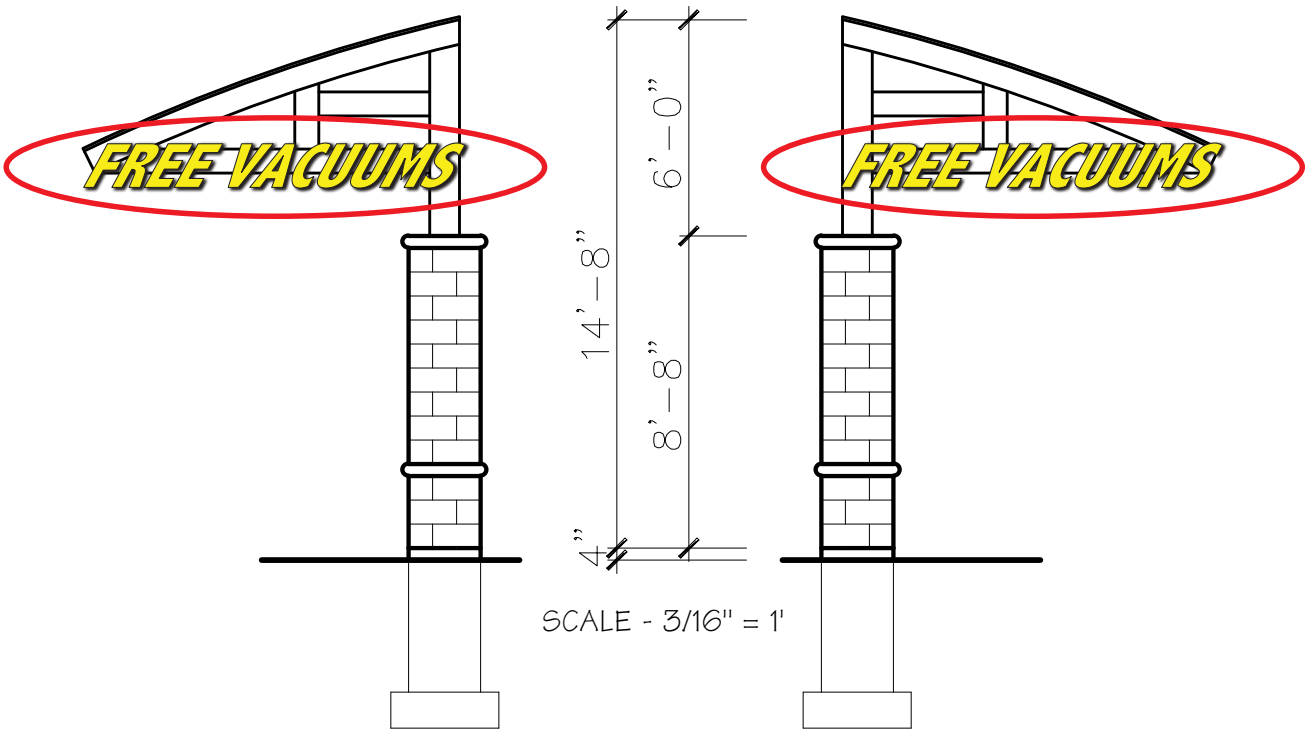
FABRICATE AND INSTALL LETTERS OF ALUMINUM AND ACRYLIC.
FACES TO BE YELLOW ACRYLIC. TRIMCAP TO BE BLACK.
RACEWAY TO BE PAINTED TO MATCH AWNING FRAME.
ALL RETURNS TO BE PAINTED BLACK.
ALL EXPOSED METAL SURFACES TO BE COATED WITH ACRYLIC POLYURETHANE.
INTERNAL ILLUMINATION TO BE WHITE LEDS
SCALE - 3/4" = 1'

INSTALLATION INSTRUCTIONS

CENTER COPY ON AWNING FRAME AS SHOWN.
ALIGN TOP OF COPY WITH TOP OF FRAME.
CONNECT TO ELECTRICAL SERVICE
TO BE PROVIDED BY OTHERS
PRIOR TO INSTALL.



WEST ELEVATION OF BOTH CANOPIES



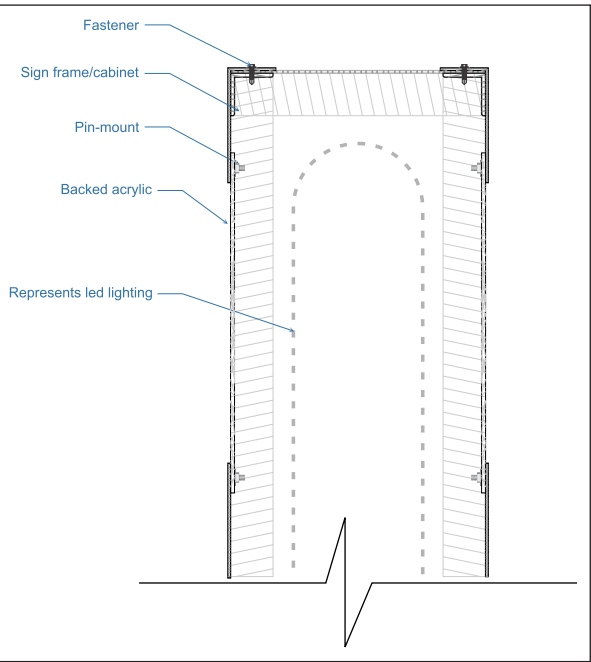
Computer generated colors are not a true match to any PMS, vinyl or paint.
Rendering shown is for concept only. Actual scale and placement shown are approximate.

1100 Route 34 Aurora, Illinois 60503 LH 630 898 5900 office 630 898 6091 fax	Prepared For:	Address:	Drwg:	Sheet:	Design Date:	LANDLORD APPROVAL SIGNATURE	TITLE:
	JET BRITE	1427 N. Farnsworth	211603	1	11/17/2021		
	Location Name:	City/State:	Rev 1:				
	AURORA	AURORA, IL	Rev 2:			PRINT	DATE:



SCHEDULE A
W6MM COLOR
PIXEL MATRIX 36X126
CABINET SIZE 47" H X 10' 1 1/2" L
VIEWING ARE 36" H X 10' L
DOUBLE FACE
CHARACTER SIZE 4 LINES
/25 CHARACTERS AT A 4" TYPE

SIGN TO
BE UL
LISTED



INSTALLATION INSTRUCTIONS

SET 2-5" X 19' STEEL PIPE IN 2' 6" x 9' 8" CONCRETE
FOOTINGS TO DEPTH OF 4'.
SIGN TO BE PERPENDICULAR TO THE ROAD.
CONNECT TO ELECTRICAL SERVICE
TO BE PROVIDED BY OTHERS PRIOR TO INSTALL.

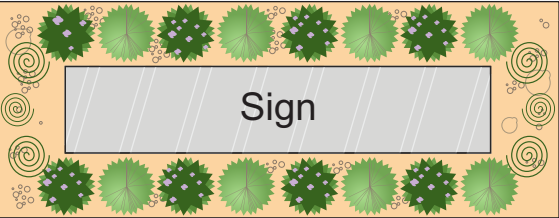
3630-76 HOLLY GREEN



DOUBLE-FACED ILLUMINATED SIGN W/EMC

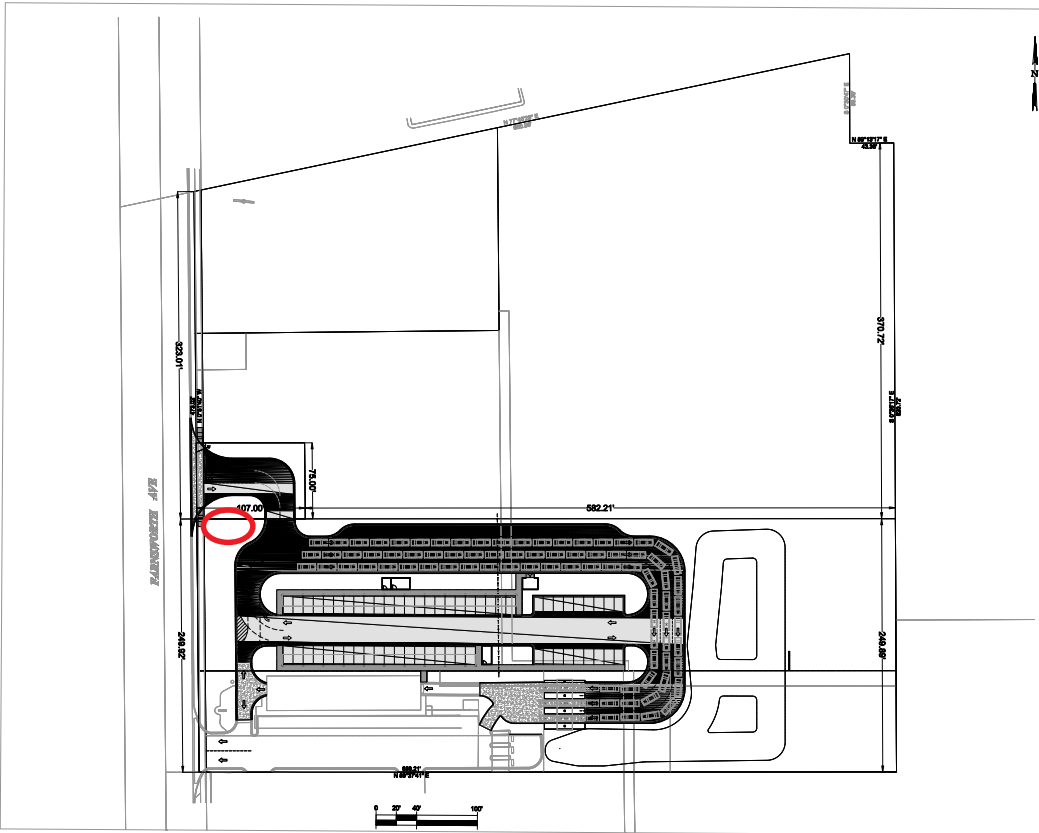
FABRICATE AND INSTALL SIGN OF ALUMINUM AND STEEL ANGLE.
FACES TO BE ALUMINUM WITH COPY ROUTED AND BACKED WITH WHITE ACRYLIC.
NON-ILLUMINATED MODULE FACE TO BE WHITE ACRYLIC
WITH COPY APPLIED FIRST SURFACE.
ARCH TO HAVE WHITE ACRYLIC FACES WITH GREEN VINYL APPLIED FIRST SURFACE.
TRIMCAP TO BE DARK GREEN.
EXPOSED METAL SURFACES TO BE COATED WITH ACRYLIC POLYURETHANE.
INTERNAL ILLUMINATION TO BE WHITE LEDS.
SCALE - 1/4" = 1'

Landscape



A landscaped area located around the base of the ground sign equal to one square foot for each one square foot of monument sign area is required for all monument signs. The landscaped area shall contain well maintained material including living landscape materials, architectural stones, water features or other beautification measures placed throughout the required landscape area. It is the responsibility of the property owner to ensure that landscaping is installed within six (6) months from the installation of the monument sign. See illustration in Section 6-15-7 of this Chapter.

LIGHT GREEN: 3630-136	VINYL
DARK GREEN: 3630-76	VINYL
LIGHT GREEN: PMS 361	PAINT
DARK GREEN: MATCH 3630-76	PAINT



Computer generated colors are not a true match to any PMS, vinyl or paint.
Rendering shown is for concept only. Actual scale and placement shown are approximate.

1100 Route 34 Aurora, Illinois 60503 LH 630 898 5900 office 630 898 6091 fax	Prepared For: JET BRITE	Address: 1427 N. Farnsworth	Drwg: 211603	Sheet: 2	Design Date: 11/17/2021	LANDLORD APPROVAL SIGNATURE	TITLE:
	Location Name: AURORA	City/State: AURORA, IL	Rev 1: 11/18/2021				DATE: