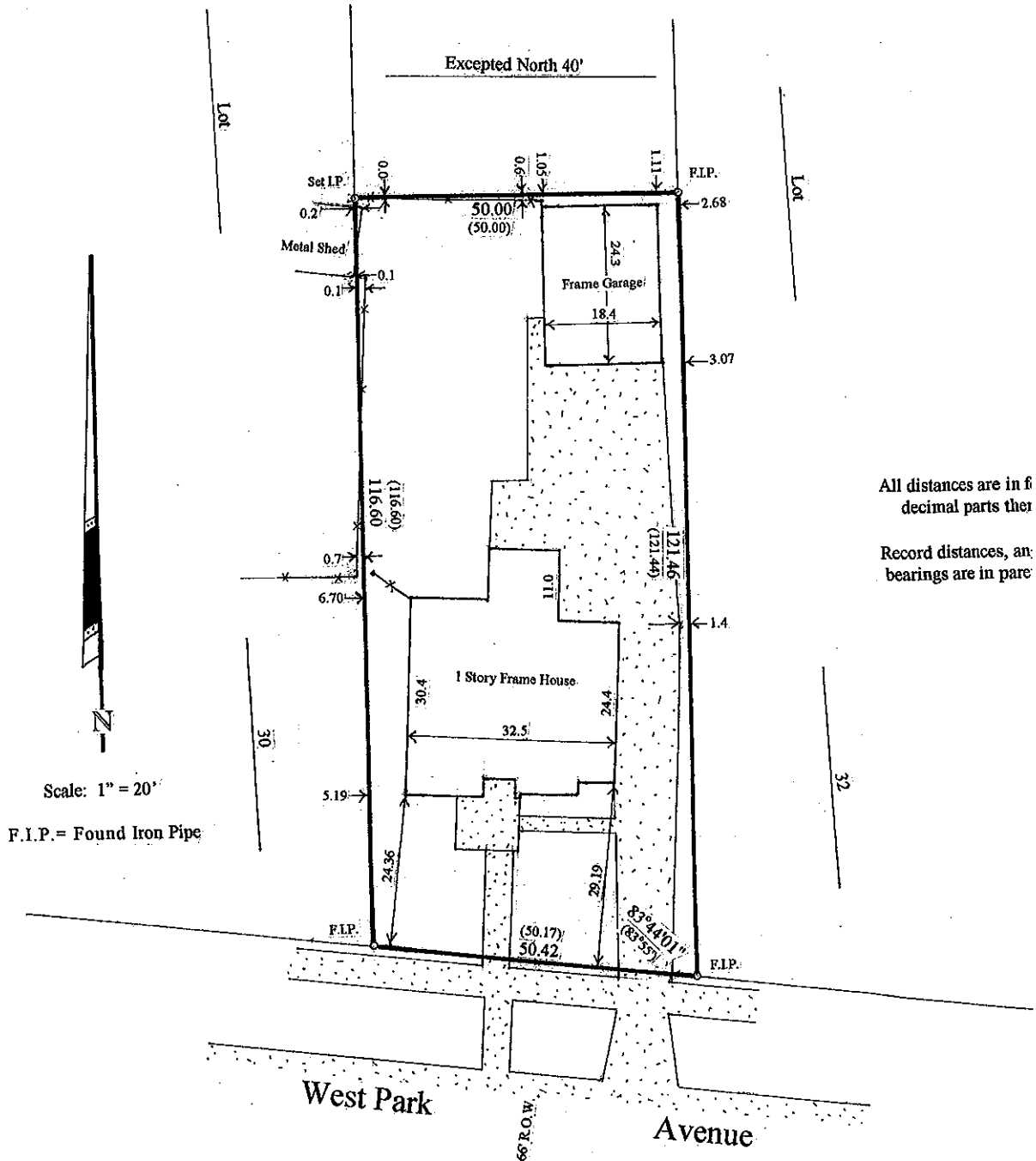


Plat of Survey

LOT 31 (EXCEPT THE NORTH 40 FEET THEREOF) IN BLOCK 2 OF J. R. AND J. C. HANNA'S ADDITION TO AURORA, IN THE CITY OF AURORA, KANE COUNTY, ILLINOIS.

Commonly known as 333 West Park Avenue, Aurora.



All distances are in feet decimal parts thereof.
Record distances, and bearings are in parentheses.

Scale: 1" = 20'

F.I.P. = Found Iron Pipe

State of Illinois)
County of Kendall)

SS

I, Thomas J. Todd, an Illinois Professional Land Surveyor, do hereby certify that the plat shown hereon,