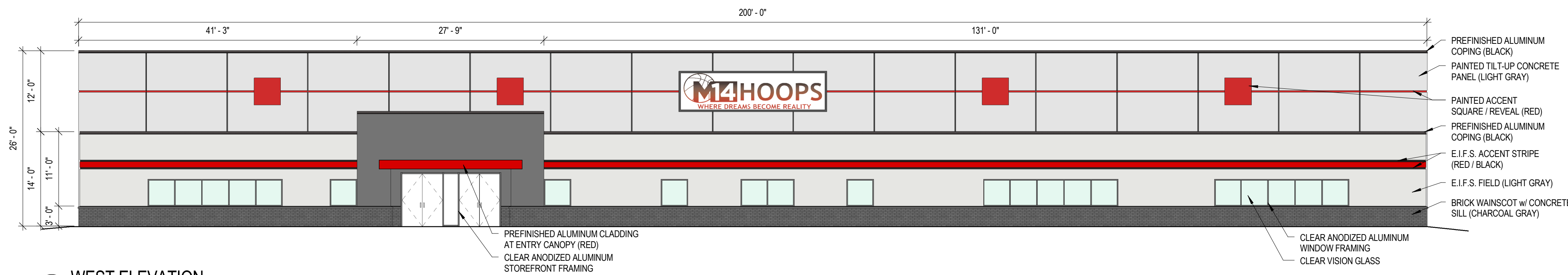
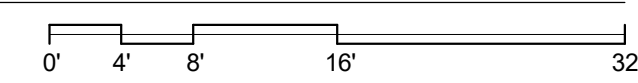


# ELEVATIONS

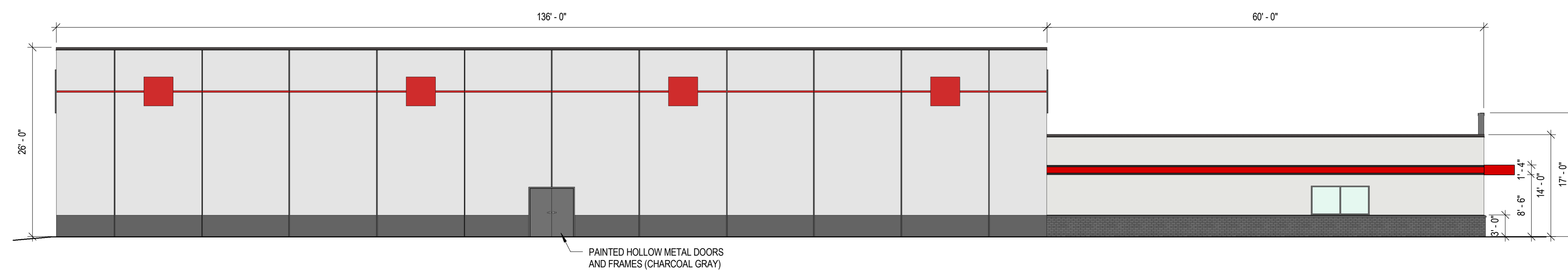


1 WEST ELEVATION  
3/32" = 1'-0"

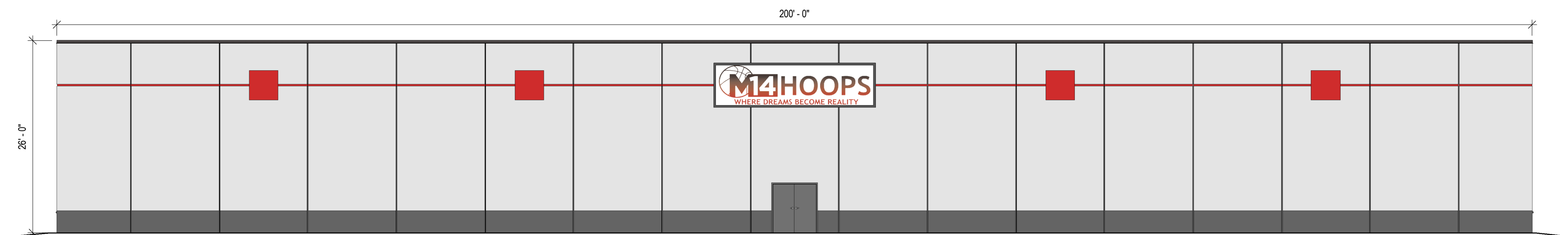
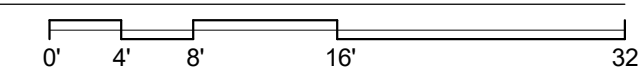


Elevation Data Table: Wall Signage			
Wall Sign #	Description	Value	Unit
1	i) Width of Façade - on which Sign is Located	200.00	Feet
	ii) Height of Façade - on which Sign is Located	26.00	Feet
	iii) Square Footage of Façade - on which Sign is Located	5,200.00	Square Feet
	iv) Width of Sign Face	22.00	Feet
	v) Height of Sign Face	6.00	Feet
	vi) Square Footage of Sign Face	132.00	Square Feet
	vii) Percent of Sign Coverage - Façade on which Sign is Located	3%	Percent
2	i) Width of Façade - on which Sign is Located	200.00	Feet
	ii) Height of Façade - on which Sign is Located	26.00	Feet
	iii) Square Footage of Façade - on which Sign is Located	5,200.00	Square Feet
	iv) Width of Sign Face	22.00	Feet
	v) Height of Sign Face	6.00	Feet
	vi) Square Footage of Sign Face	132.00	Square Feet
	vii) Percent of Sign Coverage - Façade on which Sign is Located	3%	Percent

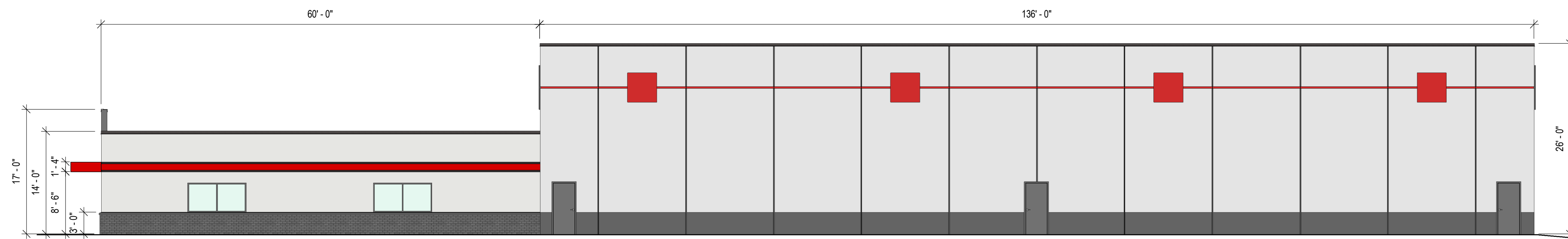
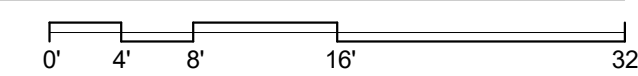
Elevation Data Table: Elevations			
Description	Value	Unit	
a) Building Height in feet (typical)	26.00	Feet	
b) Total Building Square Footage (typical)	39,200.00	Square Feet	
c) First Floor Building Square Footage (typical)	39,200.00	Square Feet	
d) Number of building stories (typical)	1.00	Square Feet	
e) Exterior Material List (including colors) for all buildings and accessory structures:			
0			



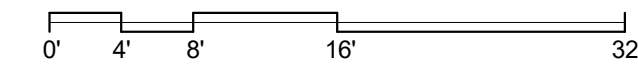
2 NORTH ELEVATION  
3/32" = 1'-0"



3 EAST ELEVATION  
3/32" = 1'-0"



4 SOUTH ELEVATION  
3/32" = 1'-0"



REVISIONS:

**AMCON**  
DESIGN AND CONSTRUCTION CO., LLC  
20633 WATERTOWN COURT SUITE 200, WAUKESHA, WISCONSIN 53186 (262) 717-5944

AMCON  
**M14 HOOPS TRAINING FACILITY**  
AURORA, IL

ELEVATIONS

DATE:  
11.09.2016  
**A1.0**  
PROJECT NUMBER  
16096