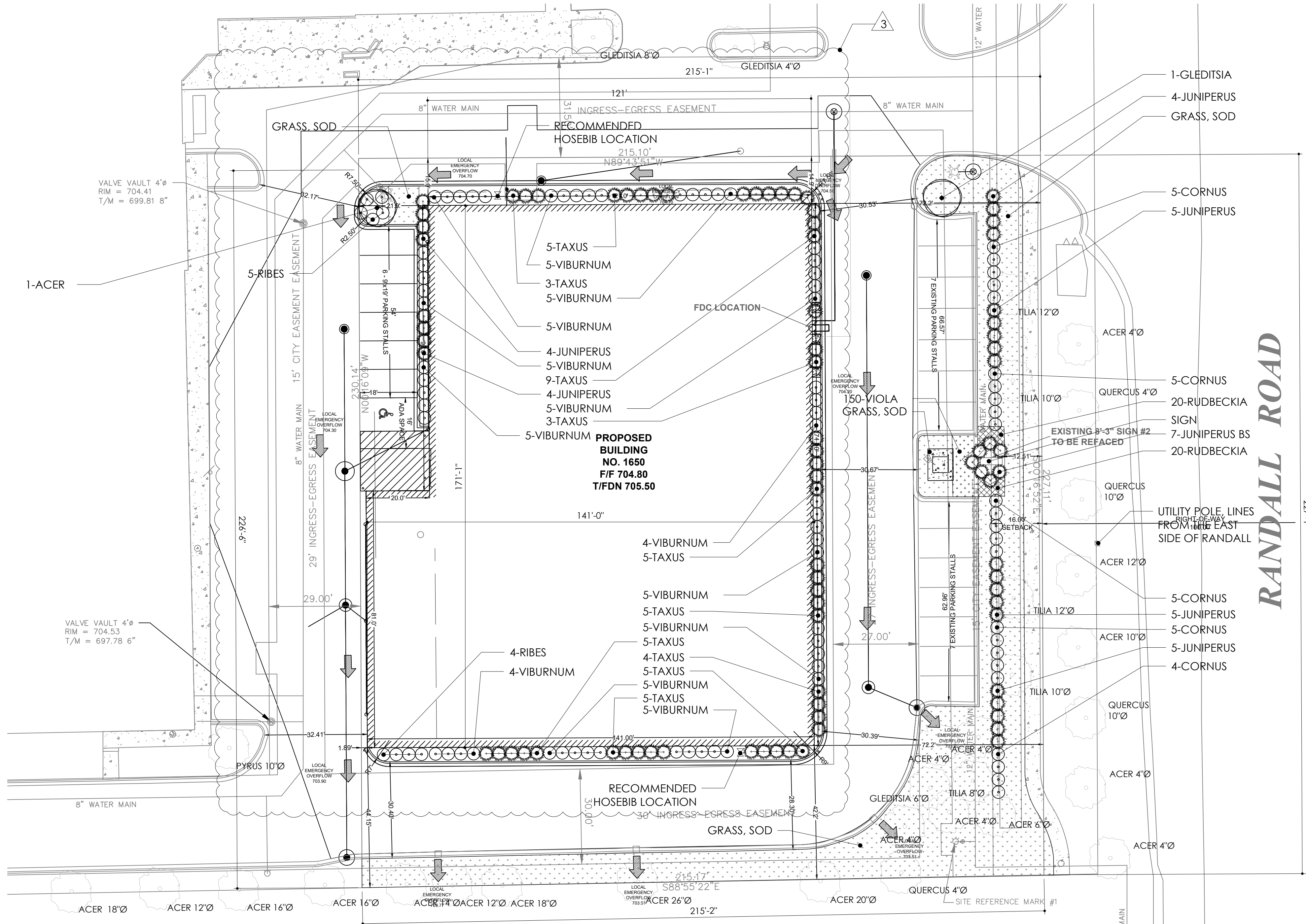
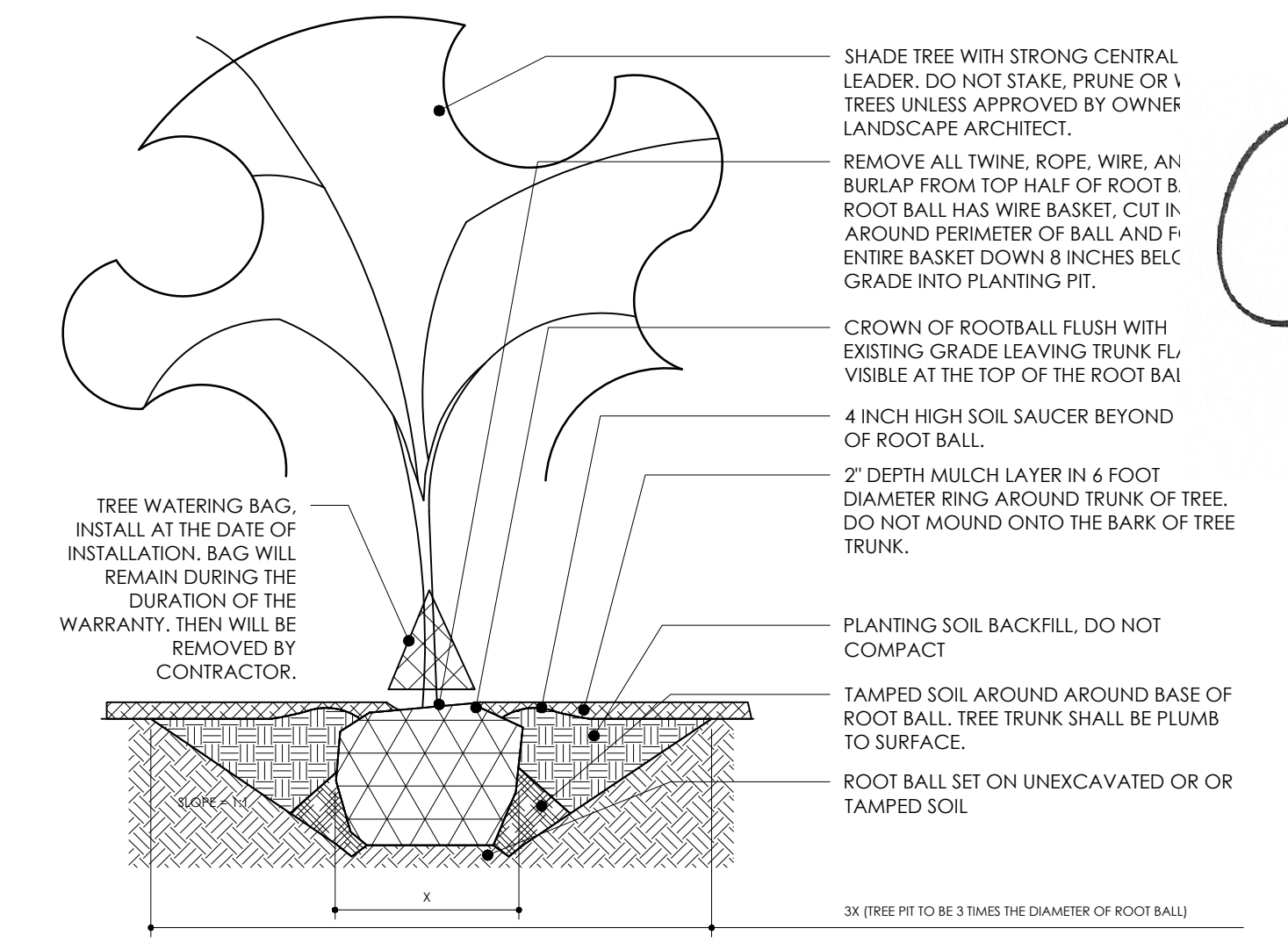
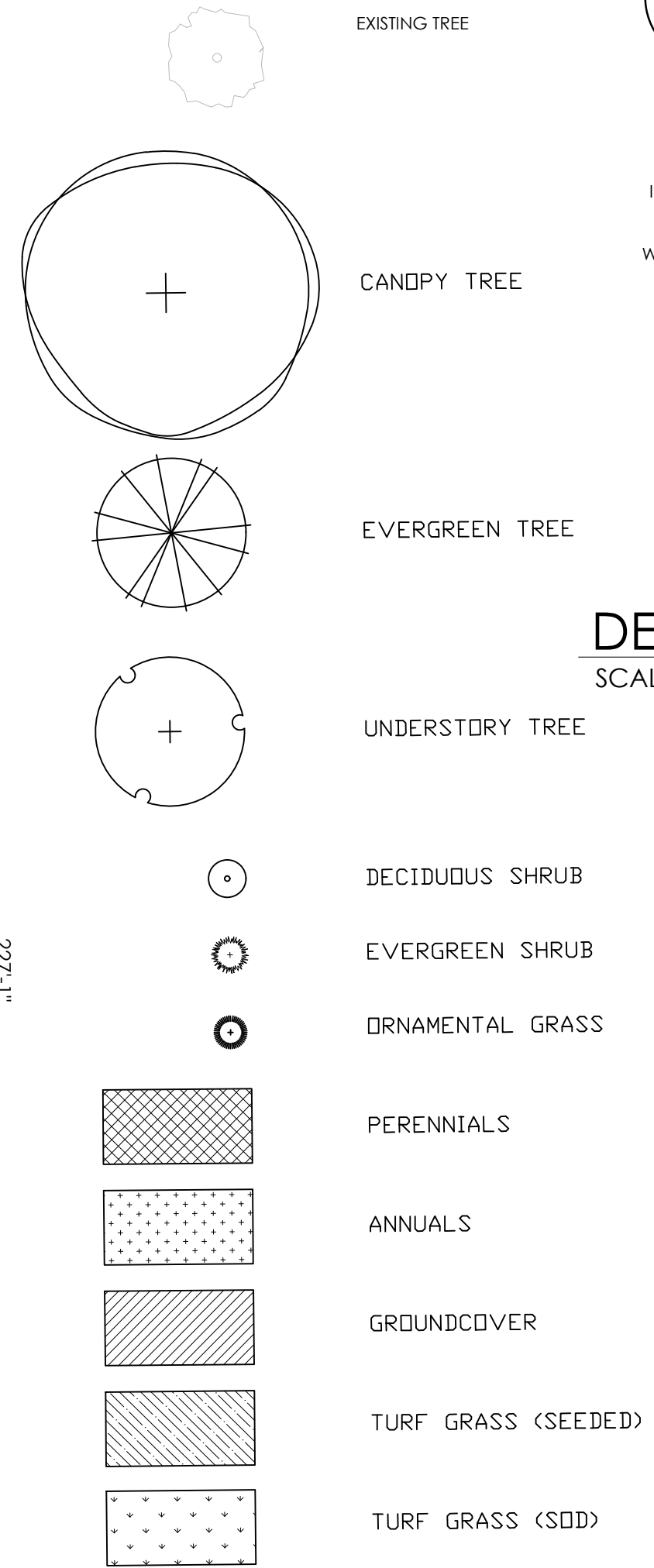


LANDSCAPE PLAN FOR STORAGE CENTERS SUBDIVISION

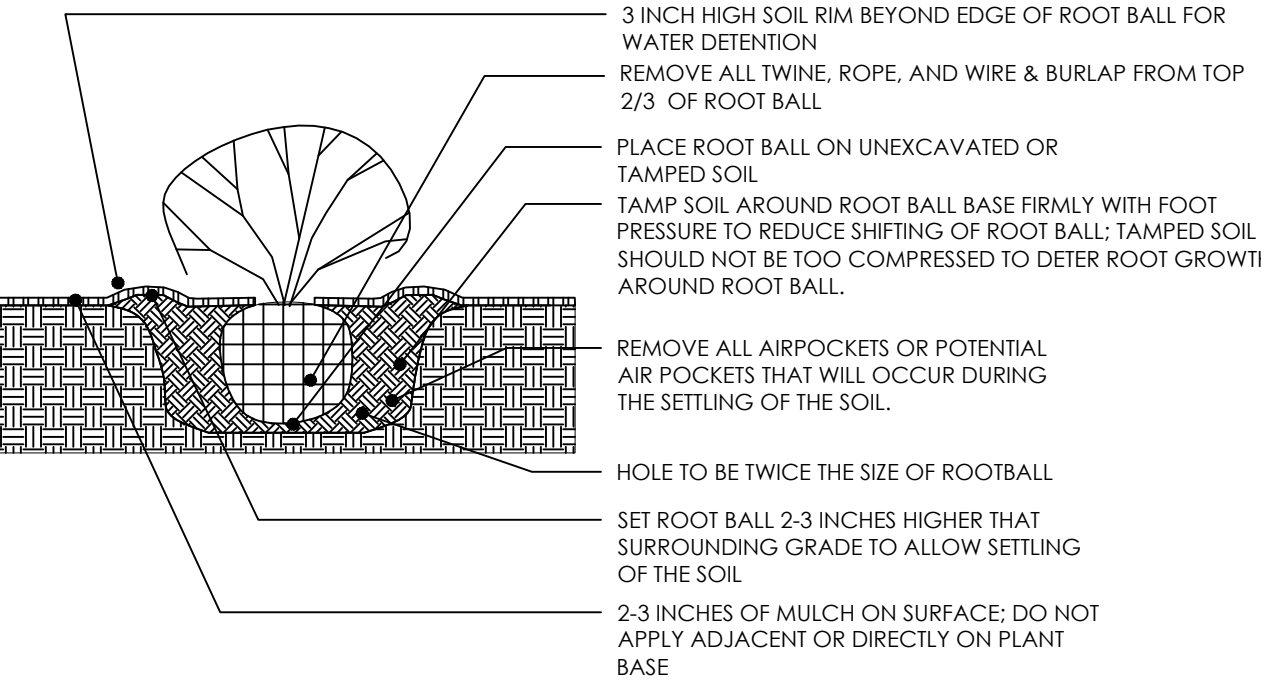


PLANT MATERIAL KEY



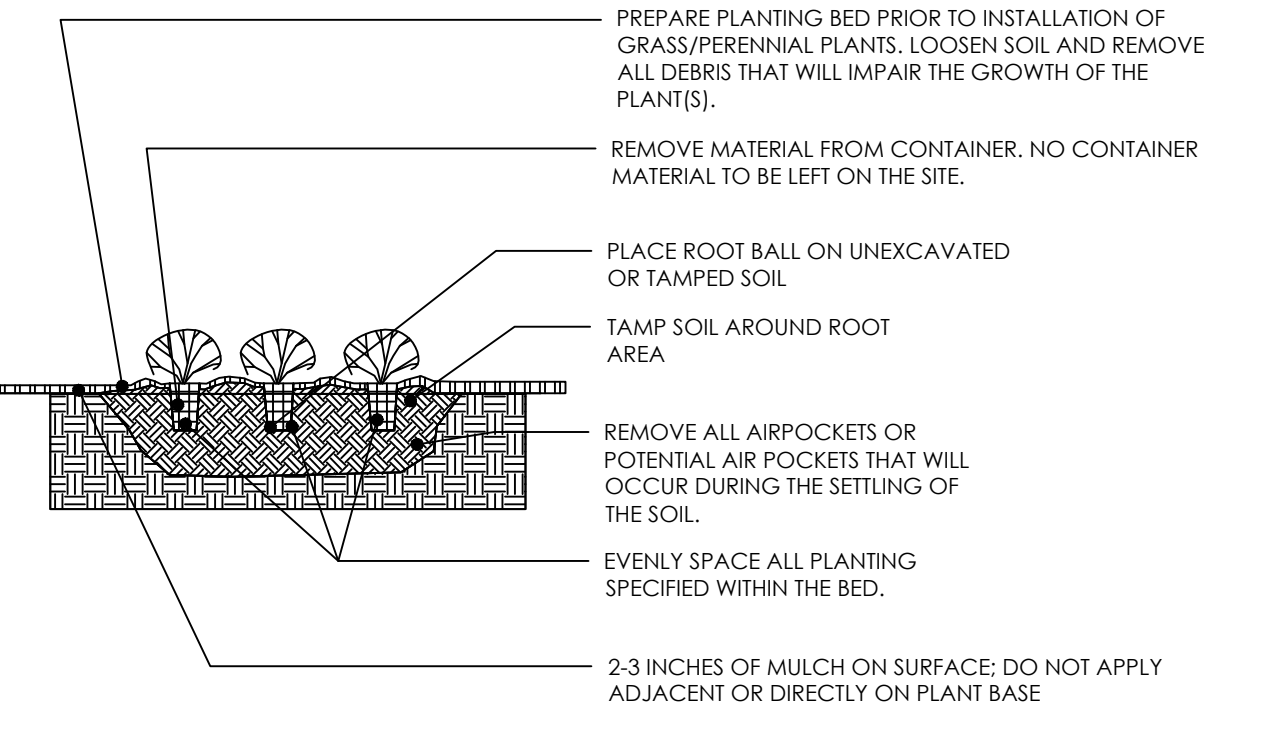
DECIDUOUS TREE DETAIL

SCALE: 1/4"=1'-0"



SHRUB DETAIL

SCALE: 1/4"=1'-0"



PERENNIAL DETAIL

SCALE: 1/4"=1'-0"

LANDSCAPE PLAN

SCALE: 1"=20'-0"



LOCATION MAP

SCALE: NTS

LANDSCAPE DATA TABLE

Landscaping CTE Requirement Works

| | | | | | | | | | |
|------------------------------------|--|---|-----------------|------------------|------------------|-------------------------------|------------|--------------|--------|
| Project Number: DST2020-211 | | Petitioner: CHRISTOPHER MICHALEK, SGW ARCHITECTURE | | | | | | | |
| Street Frontage | | 227 L.F. | | | | Perimeter Yard | | 884 | L.F. |
| Stormwater HWL | | 0 L.F. Wet Bottom 0 L.F. Dry Bottom | | | | Buffer Yard | | 0 | L.F. |
| Neighborhood Border | | 657 L.F. | | | | Surface Parking Spaces | | 21 | spaces |
| Dwelling Units | | 0 units | | | | Parking Lot Islands | | 2 | Number |
| Subdivision Name: | | STORAGE CENTERS SUBDIVISION | | | | Building Foundation | | 604 | L.F. |
| | | | | | | | | | |
| Standard Requirements | | Plant Mix Guidelines | | | | | | | |
| | | Canopy Trees | Evergreen Trees | Understory Trees | Evergreen Shrubs | Deciduous Shrubs | | | |
| | | CTE Equivalent Value | | | | | | | |
| | | Total CTEs Required | 1 | 1/3 | 1/3 | 1/20 | 1/20 | | |
| Street Trees | | 7 | 8 | 0 | 0 | 0 | 0 | 8 | |
| Wet Stormwater Facility | | 0 | 0 | 0 | 0 | 0 | 0 | 0 | |
| Dry/Turf Stormwater Facility | | 0 | 0 | 0 | 0 | 0 | 0 | 0 | |
| Neighborhood Border | | 0 | 0 | 0 | 0 | 0 | 0 | 0 | |
| Dwelling Unit | | 0 | 0 | 0 | 0 | 0 | 0 | 0 | |
| Perimeter Yard | | 13 | 13 | 0 | 0 | 0 | 0 | 13 | |
| Buffer Yard | | 0 | 0 | 0 | 0 | 0 | 0 | 0 | |
| Parking Lot Islands | | 3 | 2 | 0 | 0 | 1 | 0 | 3 | |
| Building Foundation | | 6.04 | 0 | 0 | 0 | 2.85 | 3.1 | 5.95 | |
| Total: | | 29.04 | 23 | 0 | 0 | 3.85 | 3.1 | 29.95 | |

This Calculator is for informational purposes only and all numbers are subject to verification by the Review Planner.

Verified By: _____ Date: _____

| Botanical Name | Common Name | Qty | Size | Condition | Notes |
|------------------------------------|----------------------------|-----|------------|--------------|---|
| Trees | | | | | |
| Acer rubrum 'Red Sunset' | Red Sunset Red Maple | 1 | 2.5" cal. | B&B | single stem with strong structured leader |
| Gleditsia triacanthos var. inermis | Honeylocust | 1 | 2.5" cal. | B&B | thornless, single straight trunk |
| Shrubs | | | | | |
| Cornus sericea | Red-twig Dogwood | 24 | 30" height | 5 gallon | |
| Ribes alpinum 'Green Mound' | Green Mound Alpine Currant | 9 | 30" height | 5 gallon | |
| Syringa patula 'Miss Kim' | Miss Kim Lilac | 51 | 30" height | 5 gallon | |
| Viburnum dentatum | Arrowwood Viburnum | 58 | 30" height | 5 gallon | |
| Evergreen Shrubs | | | | | |
| Juniperus chinensis 'Sea Green' | Sea Green Juniper | 27 | 30" height | 5 gallon | |
| Juniperus squamata 'Blue Star' | Blue Star Juniper | 7 | 18" height | 5 gallon | |
| Taxus x media 'Hicksii' | Hicks Yew | 49 | 30" height | 5 gallon | |
| Perennials | | | | | |
| Rudbeckia hirta | Black-eyed Susan | 40 | | 1 gallon | Install 24" on center |
| Annuals | | | | | |
| Viola cornuta | Endurio Series | 150 | | 4 inch cont. | Install 12" on center |

PLANT SCHEDULE

LANDSCAPE PLAN FOR

STORAGE CENTERS SUBDIVISION

1650 N RANDALL ROAD

AURORA, ILLINOIS

COPYRIGHT: THIS DRAWING SHALL NOT BE USED, REPRODUCED, MODIFIED OR SOLD EITHER WHOLLY OR IN PART, EXCEPT WHEN AUTHORIZED IN WRITING BY THE LANDSCAPE ARCHITECT.

PROJECT NO.: 20033

ISSUE DATE: AUG. 27, 2024

SCALE: SEE DRAWINGS

SHEET NUMBER

L1