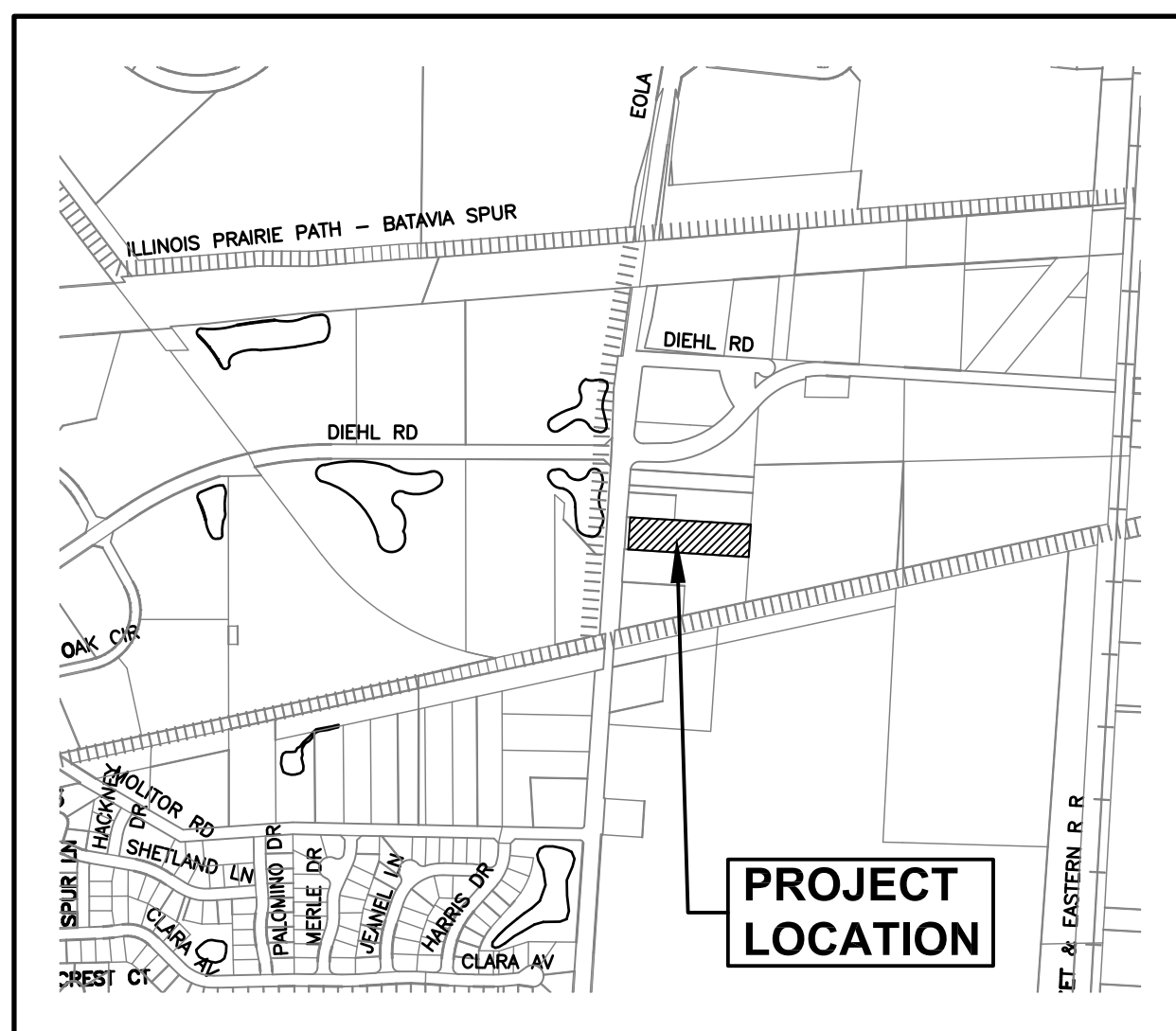
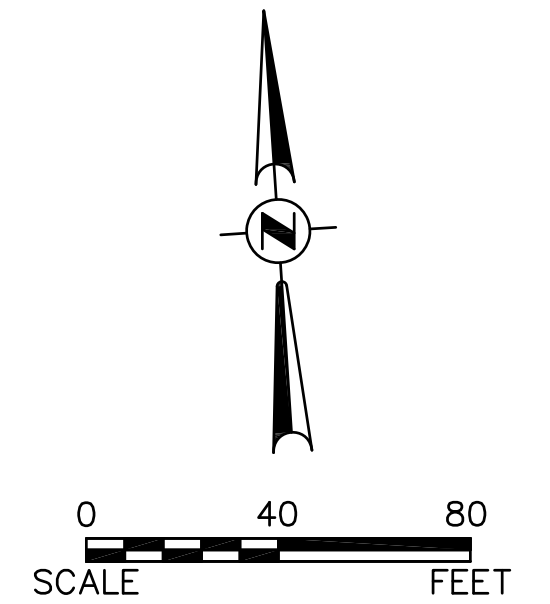


FIRE ACCESS PLAN

FOR LOT 2 OF SCIENTEL SOLUTIONS SUBDIVISION

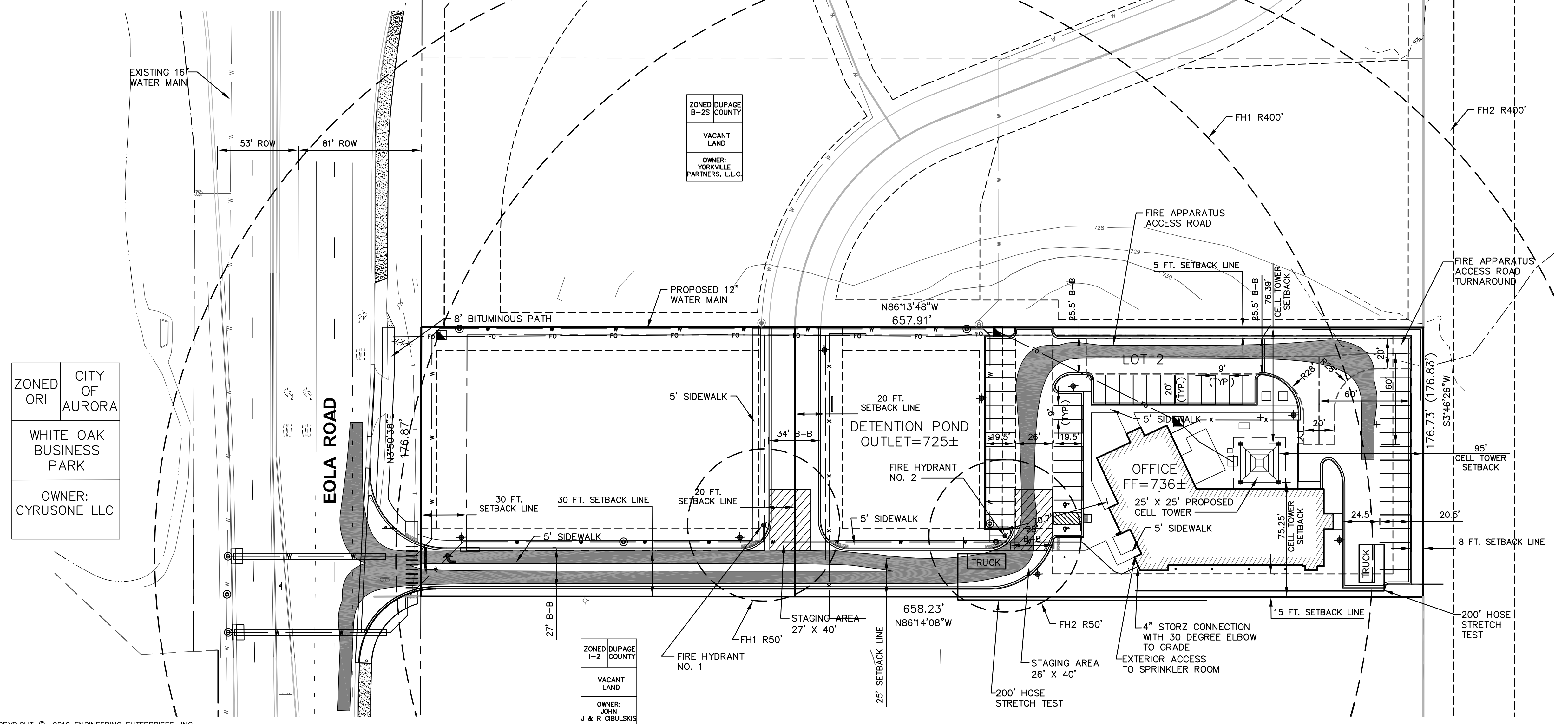
CITY OF AURORA DUPAGE COUNTY, ILLINOIS

Fire Access Plan Data Table		
Description	Value	Unit
a) Building Height	30.00	feet
b) Building Square Footage (typical)	16,032	square feet
c) Building fire suppression information including any proposed use of sprinkler systems, fire alarm systems, whether fire extinguishers are needed: Proposed to be fully sprinklered		
d) General description of business to be conducted within each building including: will there be rack storage in the building, will there be storage of combustible materials over twelve feet in height, clearance of sprinkler heads and stored materials (18 inch minimum): General office supporting Petitioner's network and telecommunications operation in main building with storage and light assembly in warehouse portion of building		



LOCATION MAP
1" = 1,000'

EXISTING	DESCRIPTION	PROPOSED
	SANITARY SEWER	
	STORM SEWER	
	END SECTION	
	WATER MAIN & SIZE	
	WATER SERVICE & BOX	
	SEWER SERVICE	
	CONTOUR	
	GAS MAIN	
	TELEPHONE CABLE	
	FIBER OPTIC	
	SILT FENCE	
	MANHOLE	
	CATCH BASIN	
	INLET	
	HYDRANT	
	VALVE VAULT	
	TREE	
	ELEVATION	
	TRENCH BACKFILL	
	STREET LIGHT	
	SIGNS	
	FOUND IRON PIPE	
	GUY WIRE	
	FLAG POLE	
	UTILITY POLE	
	UTILITY PEDESTAL	
	HANDHOLE	
	STRAW BALES	
	ITEM DESIGNATED FOR REMOVAL	
	TREE PROTECTION REQUIRED	
	BITUMINOUS PAVEMENT	
	CONCRETE	
	GRAVEL	



ZONED ORI CITY OF AURORA
WHITE OAK BUSINESS PARK
OWNER: CYRUSONE LLC

ZONED DUPAGE B-2S COUNTY
VACANT LAND
OWNER: YORKVILLE PARTNERS, L.L.C.

ZONED DUPAGE I-2 COUNTY
COMM ED ELECTRICAL SUB-STATION
OWNER: COMMONWEALTH EDISON

SETBACK RESTRICTIONS AS FOLLOWS:
30' SETBACK ALONG EOLA ROAD 5' SIDE AND REAR YARD SETBACKS FOR ALL OTHER LOT LINES.

NOTES:
1. ALL DIMENSIONS ARE TO BACK OF CURB UNLESS OTHERWISE STATED.

Printed: April 4, 2019 @ 2:37 PM By: Jim Schmidt - Tab: XX-Fire (22x34)

COPYRIGHT © 2019 ENGINEERING ENTERPRISES, INC.

Engineering Enterprises, Inc.
CONSULTING ENGINEERS
52 Wheeler Road
Sugar Grove, Illinois 60554
630.466.6700 / www.eeiweb.com

scientel SOLUTIONS
948 SPRINGER DRIVE, LOMBARD, ILLINOIS 60148

NO.	DATE	REVISIONS
16	4/5/19	PER CITY COMMENTS
15	3/29/19	PER CITY COMMENTS
14	3/20/19	PER CITY COMMENTS
13	3/19/19	MOVE SHARED DRIVEWAY NORTH, ELIMINATE WORK ON PROPERTY TO SOUTH.
12	2/18/19	REVISED PER DUPAGE D.O.T. COMMENTS

**SCIENTEL SOLUTIONS
EOLA ROAD SITE
AURORA, ILLINOIS**

**FIRE ACCESS PLAN
OPTION 2 - PHASE 1**

DATE:	APRIL 2019
PROJECT NO:	P16039
FILE:	P16039-FIRE
SHEET	1 OF 1

Path: H:\S\0539\02\FINAL\DWG\16039-FIRE