

FOR INDEX OF SHEETS, SEE SHEET NO. 2

FOR LIST OF HIGHWAY STANDARDS, SEE SHEET NO. 2

TRAFFIC DATA

DESIGN DESIGNATIONS:

- BROADWAY AVENUE = MINOR ARTERIAL
- GALENA BOULEVARD = MINOR ARTERIAL
- NEW YORK STREET = MINOR ARTERIAL

ADT:

- BROADWAY AVENUE = 14,320 (2017) 17,825 (2040)
- GALENA BOULEVARD = 8,500 (2017) 14,500 (2040)
- NEW YORK STREET = 8,420 (2017) 14,400 (2040)

DESIGN SPEED:

- BROADWAY AVENUE = 30 MPH
- GALENA BOULEVARD = 30 MPH
- NEW YORK STREET = 30 MPH

POSTED SPEED:

- BROADWAY AVENUE = 30 MPH
- GALENA BOULEVARD = 30 MPH
- NEW YORK STREET = 30 MPH

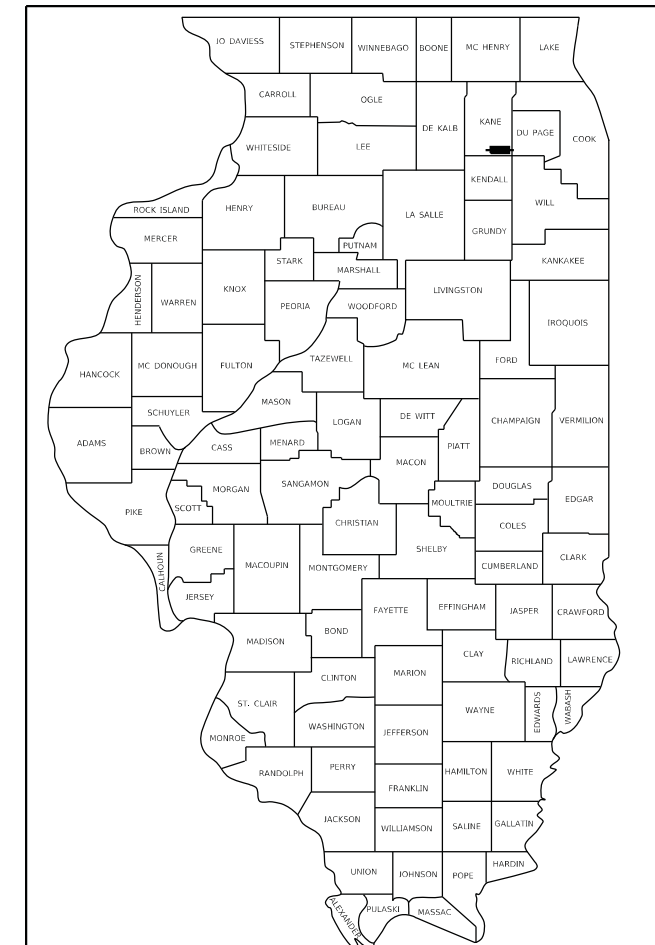
**CITY OF AURORA
APRIL 30, 2025**

PROPOSED PLANS FOR PERMIT PROJECT

**F.A.U. 2503 /IL ROUTE 25 (BROADWAY)
F.A.U. 1521 /GALENA BOULEVARD
F.A.U. 1522 /NEW YORK STREET
PERMIT: 045-92304**

IL 25 (BROADWAY) ROADWAY REHABILITATION AND STREETSCAPING GALENA BLVD & NEW YORK ST TWO-WAY CONVERSION AND TRAFFIC SIGNAL MODIFICATIONS KANE COUNTY

F.A. RTE.	PERMIT NO.	COUNTY	TOTAL SHEETS	SHEET NO.
	045-92304	KANE	186	1
ILLINOIS				



LOCATION OF SECTION INDICATED THUS: - ■ -



2363 SEQUOIA DRIVE, SUITE 101 | AURORA, ILLINOIS 60506
Phone: 630.553.7560 | Toll Free: 800.728.7805 | Fax: 630.553.7646 | HRGreen.com
ILLINOIS PROFESSIONAL DESIGN FIRM #184-001322

CITY OF AURORA

APPROVED _____ 20 _____

CITY OF AURORA

PROFESSIONAL ENGINEER'S SIGNATURE & SEAL

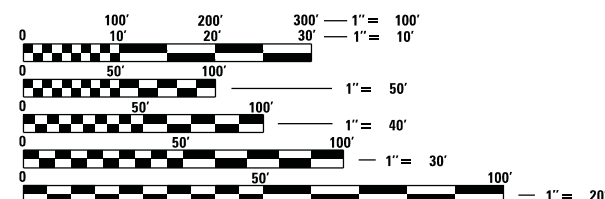


MICHAEL WITTKOP, P.E., CPESC DATE _____
EXPIRES: 11 /30 /2025 (APPLIES TO SHEETS 1 - 126 AND 147 TO 176)

PROFESSIONAL ENGINEER'S SIGNATURE & SEAL

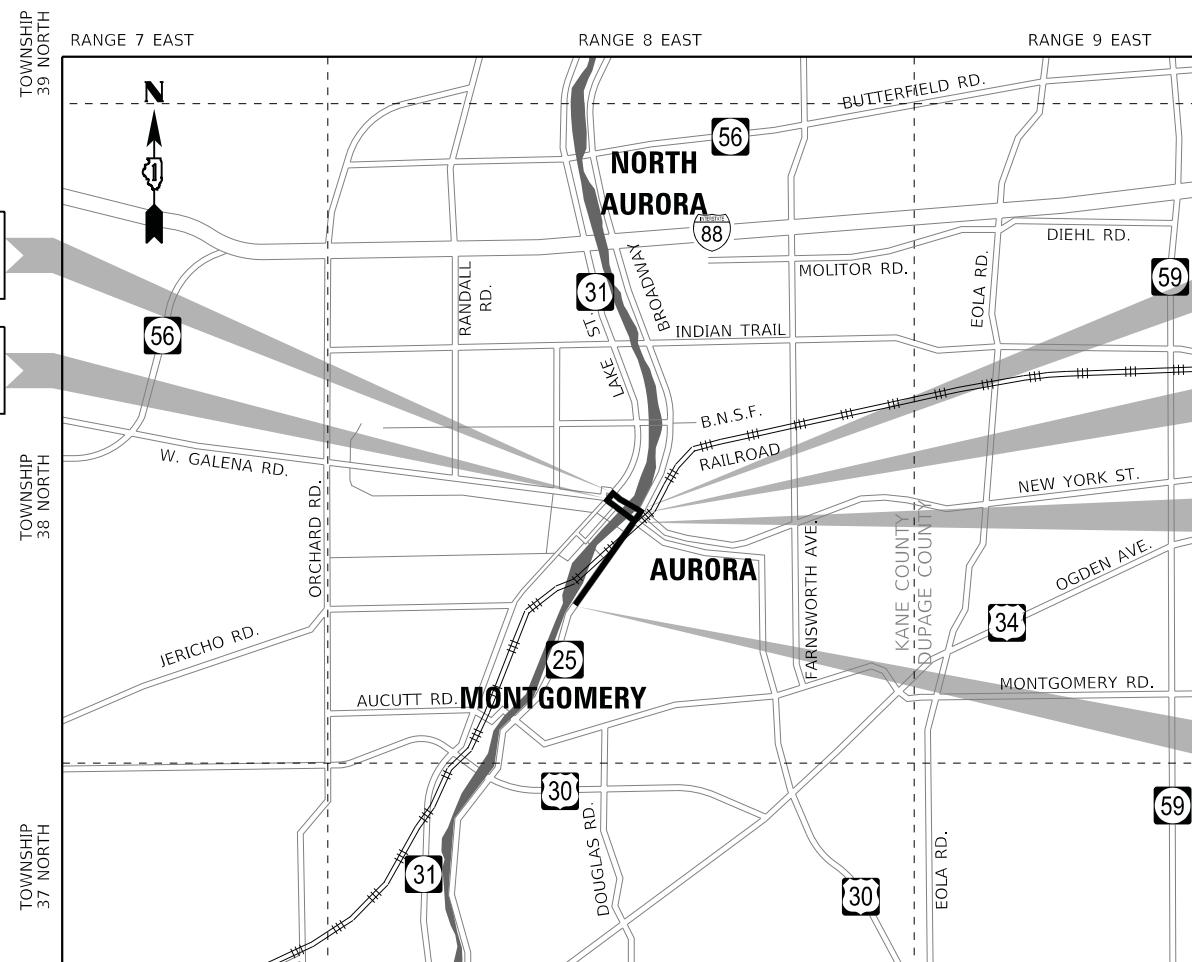
TRANSMART

WILLIAM D. STERMER, P.E. DATE _____
EXPIRES: 11 /30 /2025 (APPLIES TO SHEETS 127 - 146)



FULL SIZE PLANS HAVE BEEN PREPARED USING STANDARD ENGINEERING SCALES. REDUCED SIZED PLANS WILL NOT CONFORM TO STANDARD SCALES. IN MAKING MEASUREMENTS ON REDUCED PLANS, THE ABOVE SCALES MAY BE USED.

J.U.L.I.E.
JOINT UTILITY LOCATION INFORMATION FOR EXCAVATORS
1-800-892-0123
OR 811



BEGIN IMPROVEMENTS
NEW YORK STREET
STA 4000 + 06.47

BEGIN IMPROVEMENTS
GALENA BOULEVARD
STA 3001 + 84.48

END IMPROVEMENTS
IL 25 (BROADWAY)
STA 338 + 92.97

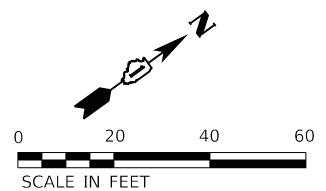
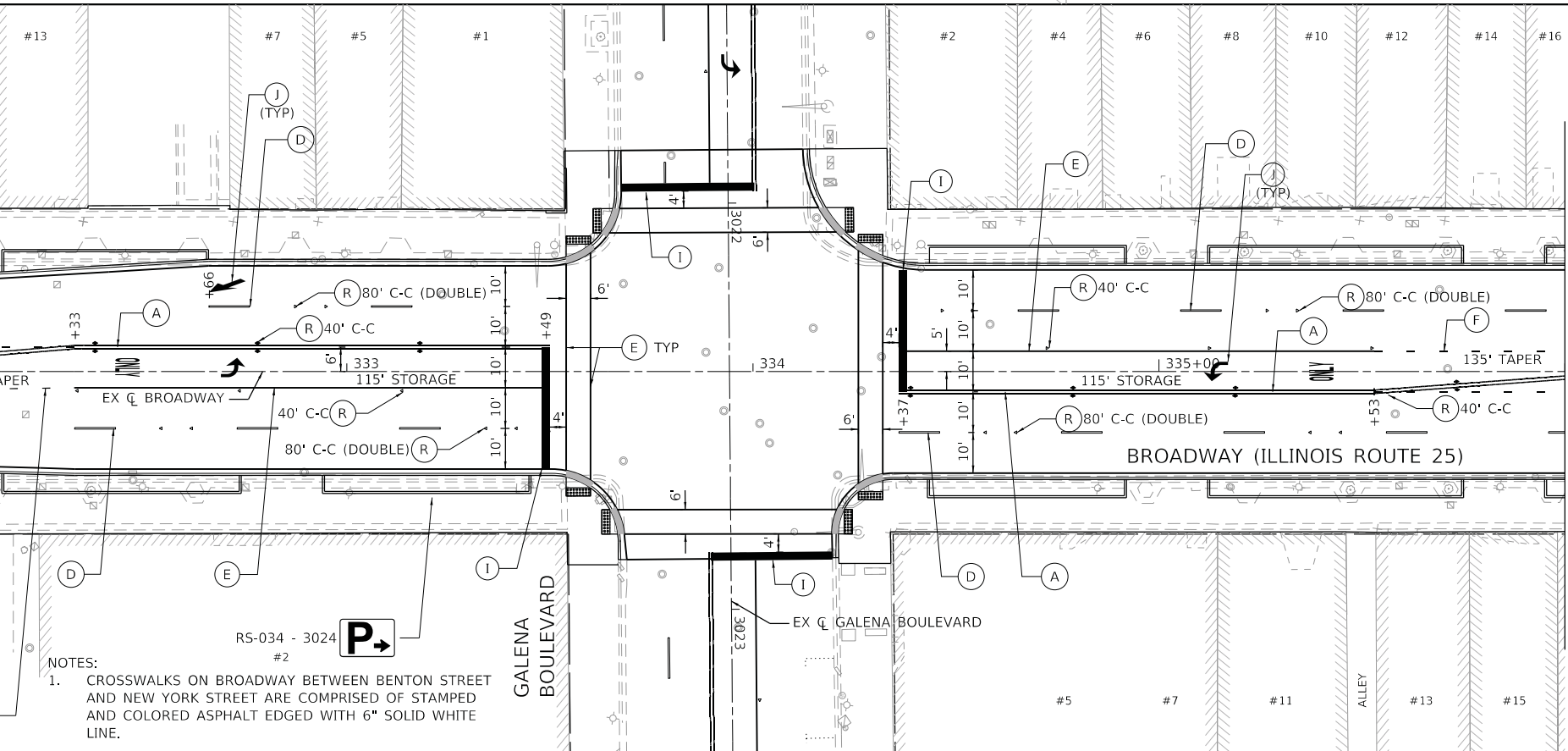
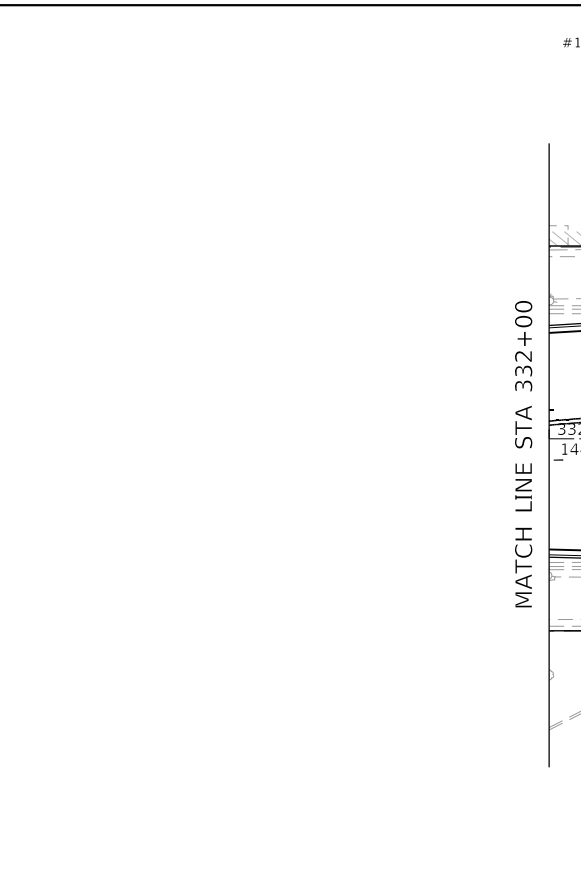
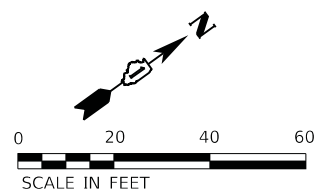
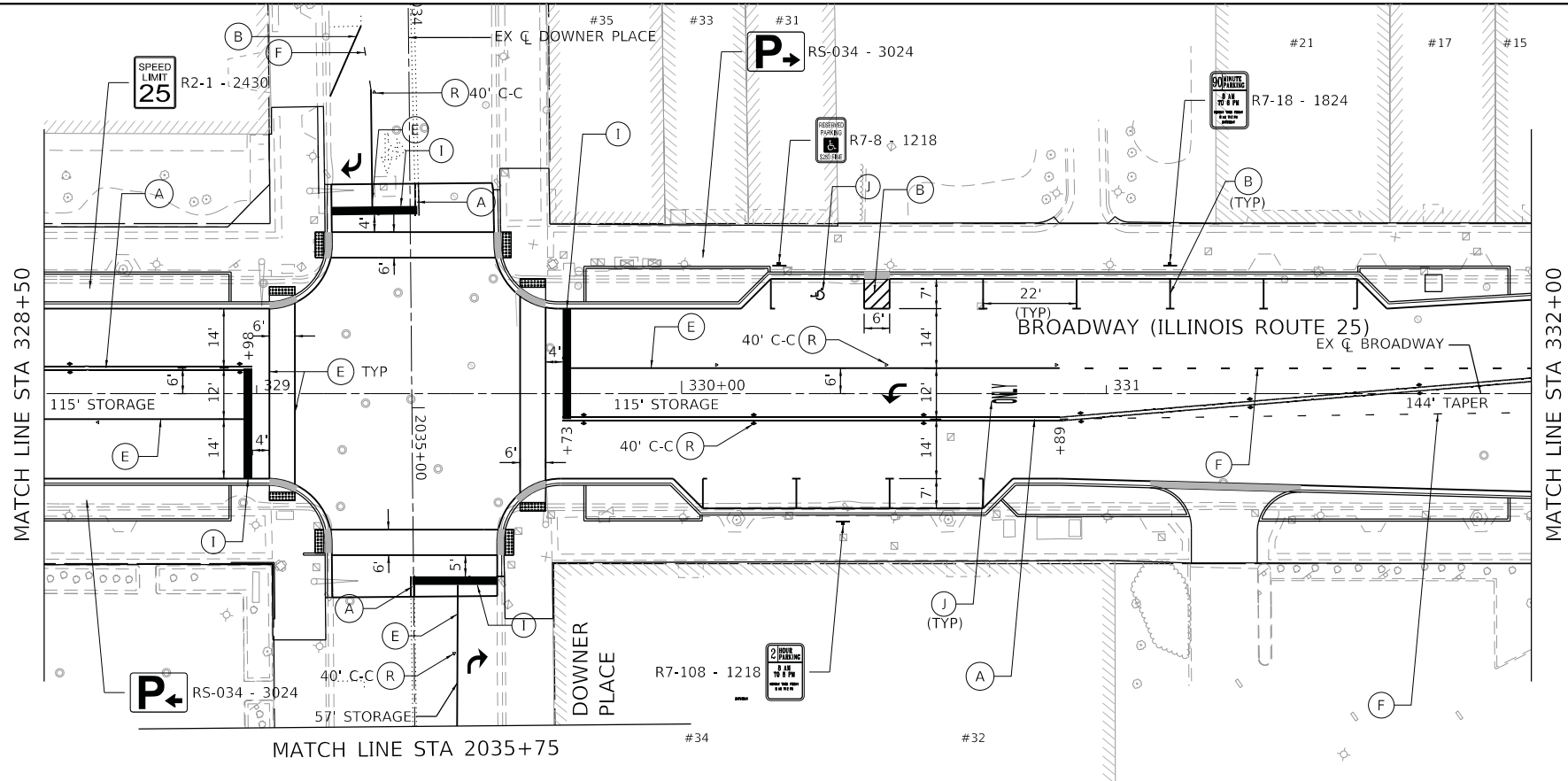
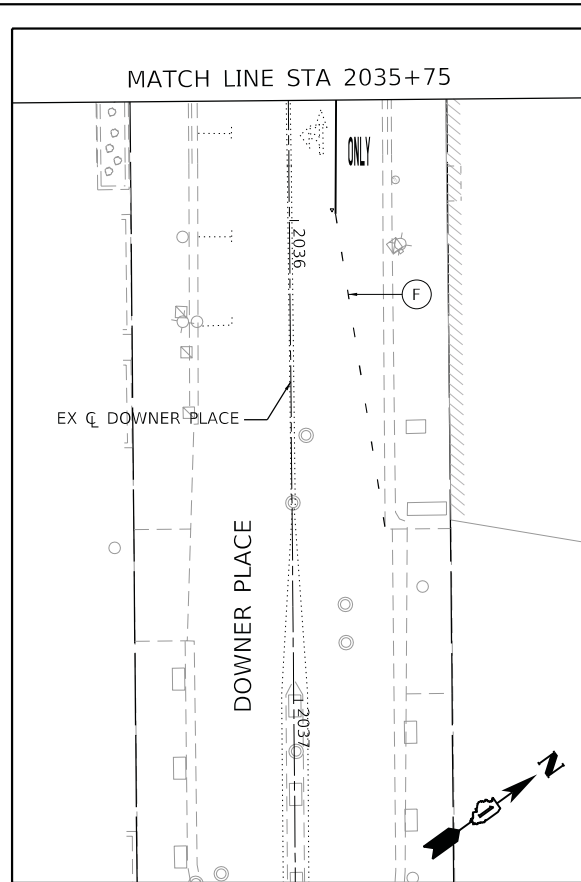
END IMPROVEMENTS
NEW YORK STREET
STA 4026 + 87.02

END IMPROVEMENTS
GALENA BOULEVARD
STA 3023 + 96.90

BEGIN IMPROVEMENTS
IL 25 (BROADWAY)
STA 324 + 43.31

LOCATION MAP (NOT TO SCALE)

PROJECT GROSS AND NET LENGTHS	
IL 25 (BROADWAY)	= 3,145 FEET (0.60 MILES)
IL 31 (LAKE STREET)	= 755 FEET (0.14 MILES)
GALENA BOULEVARD	= 2,332 FEET (0.44 MILES)
NEW YORK STREET	= 2,679 FEET (0.51 MILES)
TOTAL	= 8,911 FEET (1.69 MILES)



NOTES:
 1. CROSSWALKS ON BROADWAY BETWEEN BENTON STREET AND NEW YORK STREET ARE COMPRISED OF STAMPED AND COLORED ASPHALT EDGED WITH 6" SOLID WHITE LINE.

(A)	THERMOPLASTIC PAVEMENT MARKING - LINE 4" (YELLOW) (2-4" @ 11" C-C)	(E)	THERMOPLASTIC PAVEMENT MARKING - LINE 6" (WHITE) (SOLID)	(I)	THERMOPLASTIC PAVEMENT MARKING - LETTERS & SYMBOLS	(O)	MODIFIED URETHANE PAVEMENT MARKING - LINE 12" (WHITE) (SOLID)
(B)	THERMOPLASTIC PAVEMENT MARKING - LINE 4" (WHITE) (SOLID)	(F)	THERMOPLASTIC PAVEMENT MARKING - LINE 6" (WHITE) (6' SKIP - 2' DASH)	(J)	MODIFIED URETHANE PAVEMENT MARKING - LINE 4" (YELLOW) (2-4" @ 11" C-C)	(P)	MODIFIED URETHANE PAVEMENT MARKING - LINE 12" (YELLOW) (SOLID)
(C)	THERMOPLASTIC PAVEMENT MARKING - LINE 4" (YELLOW) (SOLID)	(G)	THERMOPLASTIC PAVEMENT MARKING - LINE 12" (WHITE) (SOLID)	(K)	MODIFIED URETHANE PAVEMENT MARKING - LINE 4" (WHITE) (SOLID)	(R)	MODIFIED URETHANE PAVEMENT MARKING - LETTERS & SYMBOLS
(D)	THERMOPLASTIC PAVEMENT MARKING - LINE 4" (WHITE) (30' SKIP - 10' DASH)	(H)	THERMOPLASTIC PAVEMENT MARKING - LINE 12" (YELLOW) (SOLID)	(M)	MODIFIED URETHANE PAVEMENT MARKING - LINE 6" (WHITE) (SOLID)	(S)	RAISED REFLECTIVE PAVEMENT MARKERS
		(L)	THERMOPLASTIC PAVEMENT MARKING - LINE 24" (WHITE) (SOLID)	(N)	MODIFIED URETHANE PAVEMENT MARKING - LINE 6" (WHITE) (6' SKIP - 2' DASH)		

LEGEND

HRGreen.com
 Micro Professional Design Firm
 #184-001322

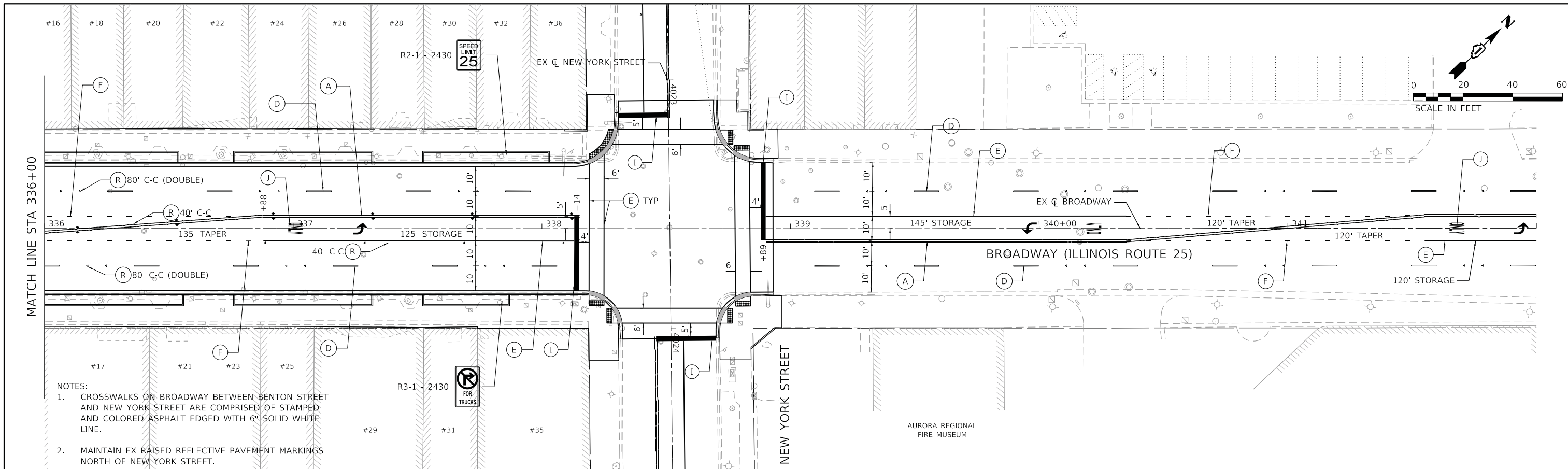
USER NAME = fdonoso	DESIGNED - MIJW	REVISED -
	DRAWN - AJM	REVISED -
PLOT SCALE = 40.0000' / in.	CHECKED - MIJW	REVISED -
PLOT DATE = 6/25/2025	DATE - 6/25/2025	REVISED -

CITY OF AURORA

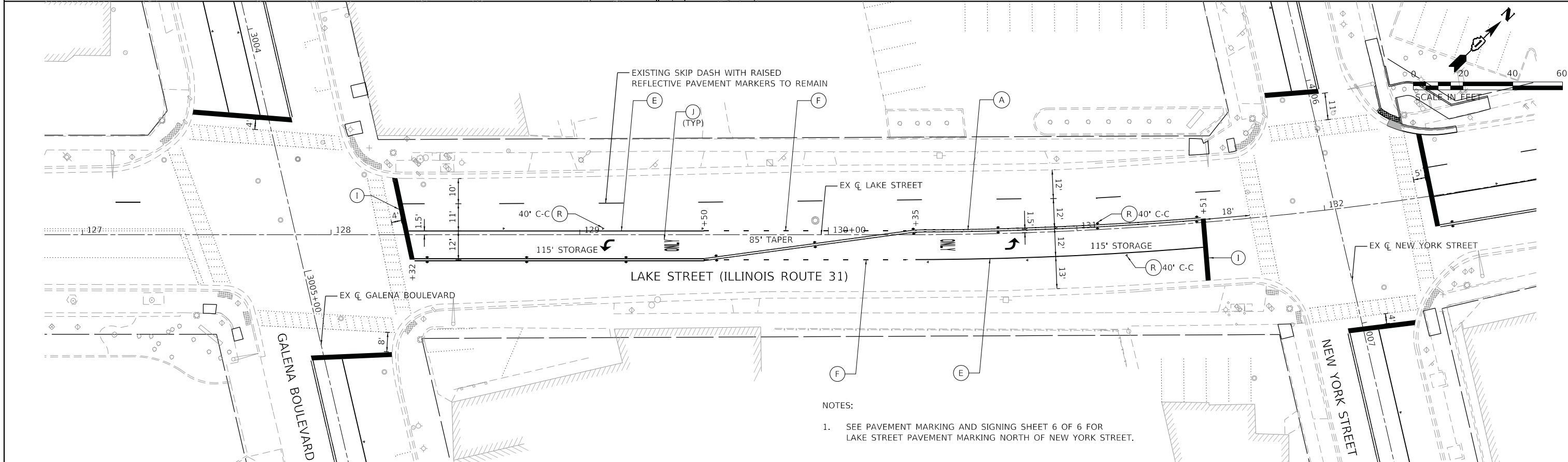
PAVEMENT MARKING AND SIGNING PLANS			
ILLINOIS ROUTE 25 (BROADWAY)			
SCALE: 1"=20'	SHEET 3 OF 6 SHEETS	STA. 328+50 TO STA. 336+00	

F.A.U. RTE.	PERMIT NO.	COUNTY	TOTAL SHEETS	SHEET NO.
	045-92304	KANE	186	81
CONTRACT NO.				
ILLINOIS FED. AID PROJECT				

HRG PROJECT NO.: 88660255
 HRG PROJ. CONTACT:
 FILE NAME: 255-SPT-pmk03.dgn
 PEN TABLE: 1/10/2024 10:41:17 AM



- NOTES:
- CROSSWALKS ON BROADWAY BETWEEN BENTON STREET AND NEW YORK STREET ARE COMPRISED OF STAMPED AND COLORED ASPHALT EDGED WITH 6" SOLID WHITE LINE.
 - MAINTAIN EX RAISED REFLECTIVE PAVEMENT MARKINGS NORTH OF NEW YORK STREET.



- NOTES:
- SEE PAVEMENT MARKING AND SIGNING SHEET 6 OF 6 FOR LAKE STREET PAVEMENT MARKING NORTH OF NEW YORK STREET.

LEGEND		THERMOPLASTIC PAVEMENT MARKING - LINE 6" (WHITE) (SOLID)		THERMOPLASTIC PAVEMENT MARKING - LETTERS & SYMBOLS		MODIFIED URETHANE PAVEMENT MARKING - LINE 12" (WHITE) (SOLID)	
(A)	THERMOPLASTIC PAVEMENT MARKING - LINE 4" (YELLOW) (2-4" @ 11" C-C)	(E)	THERMOPLASTIC PAVEMENT MARKING - LINE 6" (WHITE) (SOLID)	(J)	THERMOPLASTIC PAVEMENT MARKING - LETTERS & SYMBOLS	(O)	MODIFIED URETHANE PAVEMENT MARKING - LINE 12" (WHITE) (SOLID)
(B)	THERMOPLASTIC PAVEMENT MARKING - LINE 4" (WHITE) (SOLID)	(F)	THERMOPLASTIC PAVEMENT MARKING - LINE 6" (WHITE) (6' SKIP - 2' DASH)	(K)	MODIFIED URETHANE PAVEMENT MARKING - LINE 4" (YELLOW) (2-4" @ 11" C-C)	(P)	MODIFIED URETHANE PAVEMENT MARKING - LINE 12" (YELLOW) (SOLID)
(C)	THERMOPLASTIC PAVEMENT MARKING - LINE 4" (YELLOW) (SOLID)	(G)	THERMOPLASTIC PAVEMENT MARKING - LINE 12" (WHITE) (SOLID)	(L)	MODIFIED URETHANE PAVEMENT MARKING - LINE 4" (WHITE) (SOLID)	(Q)	MODIFIED URETHANE PAVEMENT MARKING - LETTERS & SYMBOLS
(D)	THERMOPLASTIC PAVEMENT MARKING - LINE 4" (WHITE) (30' SKIP - 10' DASH)	(H)	THERMOPLASTIC PAVEMENT MARKING - LINE 12" (YELLOW) (SOLID)	(M)	MODIFIED URETHANE PAVEMENT MARKING - LINE 6" (WHITE) (SOLID)	(R)	RAISED REFLECTIVE PAVEMENT MARKERS
		(I)	THERMOPLASTIC PAVEMENT MARKING - LINE 24" (WHITE) (SOLID)	(N)	MODIFIED URETHANE PAVEMENT MARKING - LINE 6" (WHITE) (6' SKIP - 2' DASH)		

HRG PROJECT NO.: 88660255
 HRG PROJ. CONTACT:
 FILE NAME: 255-SPT-Plan04.dgn
 PEN TABLE: 1/10/2024/1/21

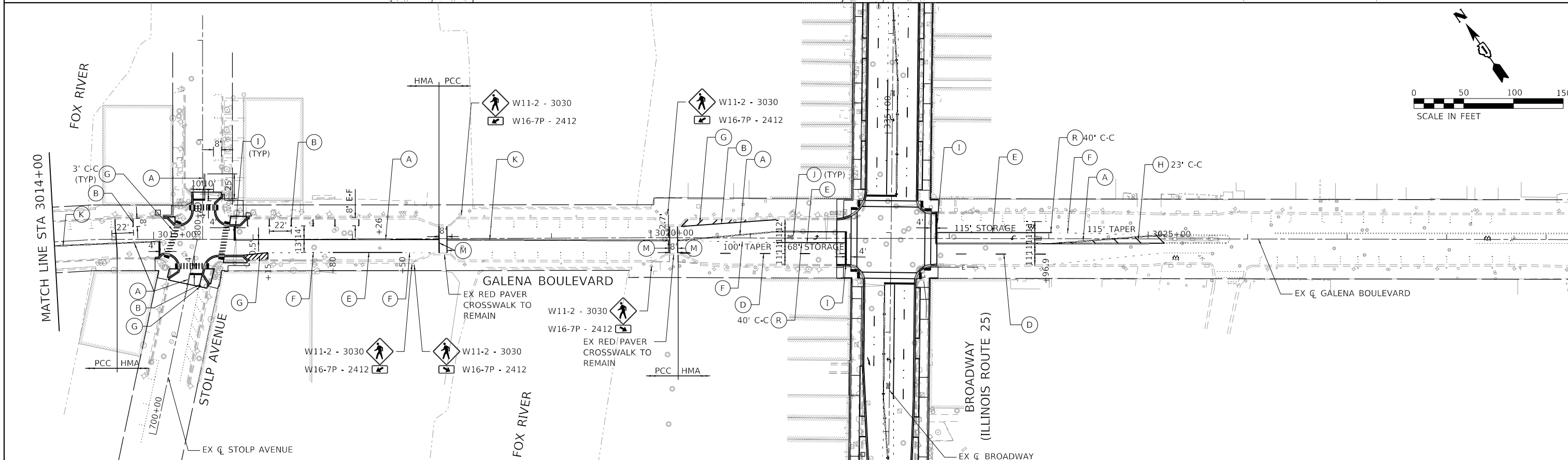
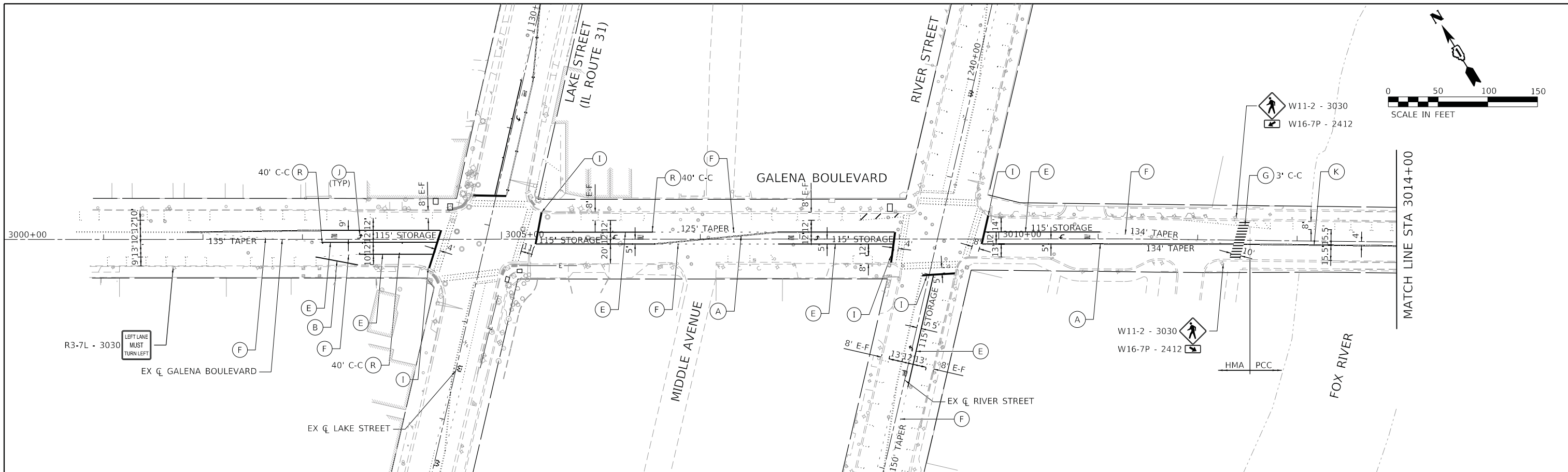


USER NAME = fdonoso	DESIGNED - MJW	REVISED -
	DRAWN - AJM	REVISED -
PLOT SCALE = 40.0000' / in.	CHECKED - MJW	REVISED -
PLOT DATE = 6/25/2025	DATE - 6/25/2025	REVISED -

CITY OF AURORA

PAVEMENT MARKING AND SIGNING PLANS		
ILLINOIS ROUTE 25 (BROADWAY) & ILLINOIS ROUTE 31 (LAKE STREET)		
SCALE: 1"=20'	SHEET 4 OF 6 SHEETS	STA. 336+00 TO STA. 342+00

F.A.U. RTE.	PERMIT NO.	COUNTY	TOTAL SHEETS	SHEET NO.
	045-92304	KANE	186	82
CONTRACT NO.				
ILLINOIS FED. AID PROJECT				



LEGEND

- | | | | |
|--|--|--|--|
| (A) THERMOPLASTIC PAVEMENT MARKING - LINE 4" (YELLOW) (2-4" @ 11" C-C) | (E) THERMOPLASTIC PAVEMENT MARKING - LINE 6" (WHITE) (SOLID) | (J) THERMOPLASTIC PAVEMENT MARKING - LETTERS & SYMBOLS | (O) MODIFIED URETHANE PAVEMENT MARKING - LINE 12" (WHITE) (SOLID) |
| (B) THERMOPLASTIC PAVEMENT MARKING - LINE 4" (WHITE) (SOLID) | (F) THERMOPLASTIC PAVEMENT MARKING - LINE 6" (WHITE) (6' SKIP - 2' DASH) | (K) MODIFIED URETHANE PAVEMENT MARKING - LINE 4" (YELLOW) (2-4" @ 11" C-C) | (P) MODIFIED URETHANE PAVEMENT MARKING - LINE 12" (YELLOW) (SOLID) |
| (C) THERMOPLASTIC PAVEMENT MARKING - LINE 4" (YELLOW) (SOLID) | (G) THERMOPLASTIC PAVEMENT MARKING - LINE 12" (WHITE) (SOLID) | (L) MODIFIED URETHANE PAVEMENT MARKING - LINE 4" (WHITE) (SOLID) | (Q) MODIFIED URETHANE PAVEMENT MARKING - LETTERS & SYMBOLS |
| (D) THERMOPLASTIC PAVEMENT MARKING - LINE 4" (WHITE) (30' SKIP - 10' DASH) | (H) THERMOPLASTIC PAVEMENT MARKING - LINE 12" (YELLOW) (SOLID) | (M) MODIFIED URETHANE PAVEMENT MARKING - LINE 6" (WHITE) (SOLID) | (R) RAISED REFLECTIVE PAVEMENT MARKERS |
| | (I) THERMOPLASTIC PAVEMENT MARKING - LINE 24" (WHITE) (SOLID) | (N) MODIFIED URETHANE PAVEMENT MARKING - LINE 6" (WHITE) (6' SKIP - 2' DASH) | |

HRG PROJECT NO.: 88660255
 HRG PROJ. CONTACT:
 FILE NAME: 255-SPT-pmk05.dgn
 PEN TABLE: 010106.dtl



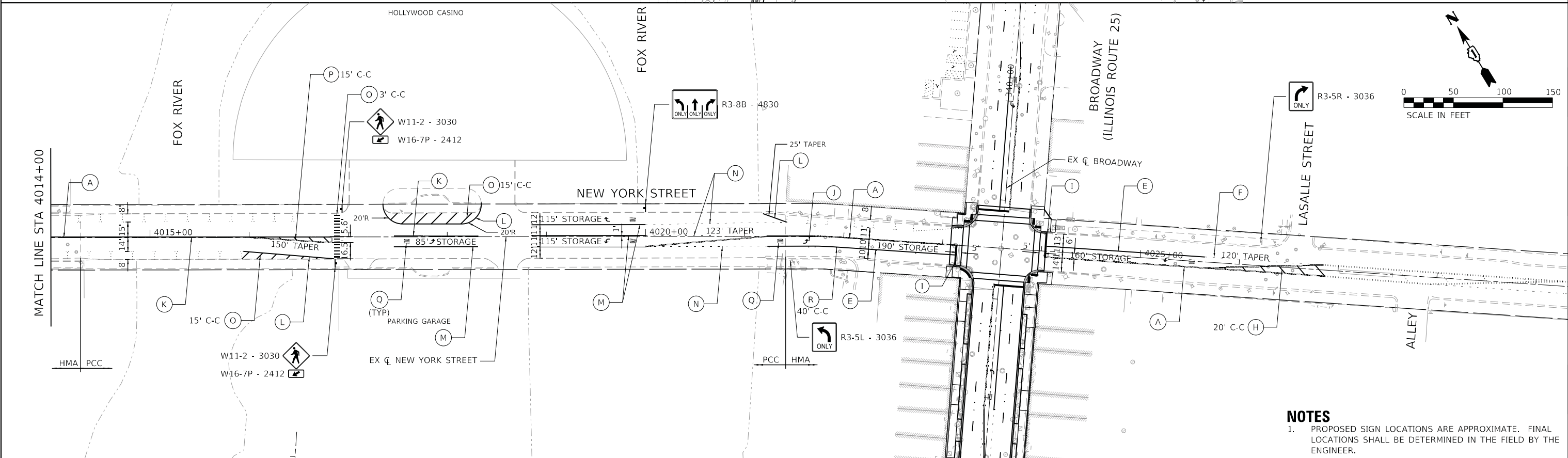
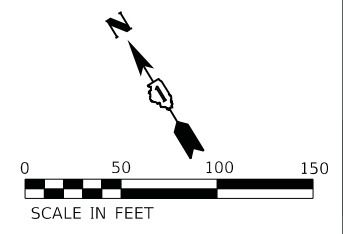
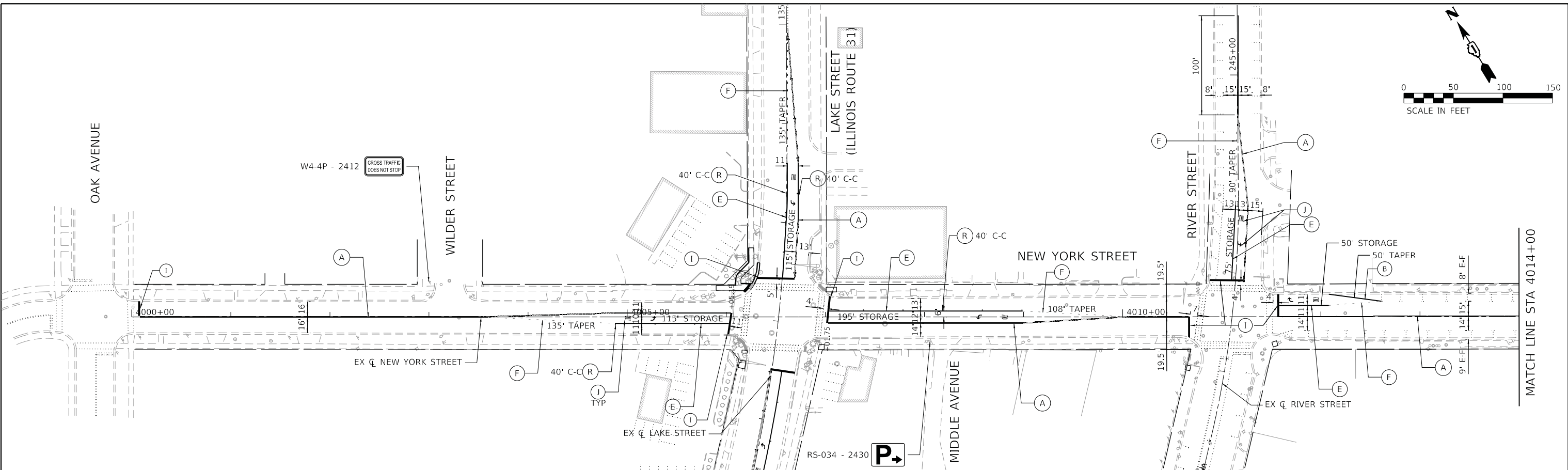
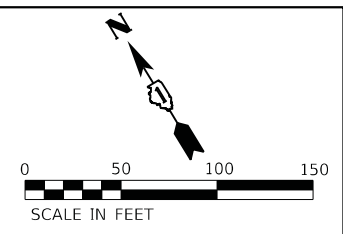
USER NAME = fdonoso	DESIGNED - MJW	REVISED -
	DRAWN - AJM	REVISED -
PLOT SCALE = 100,0000' / in.	CHECKED - MJW	REVISED -
PLOT DATE = 6/25/2025	DATE - 6/25/2025	REVISED -

CITY OF AURORA

**PAVEMENT MARKING AND SIGNING PLANS
GALENA BOULEVARD**

SCALE: 1"=50' SHEET 5 OF 6 SHEETS STA. 3000+00 TO STA. 3029+00

F.A.U. RTE.	PERMIT NO.	COUNTY	TOTAL SHEETS	SHEET NO.
	045-92304	KANE	186	83
CONTRACT NO.				
ILLINOIS FED. AID PROJECT				



NOTES
 1. PROPOSED SIGN LOCATIONS ARE APPROXIMATE. FINAL LOCATIONS SHALL BE DETERMINED IN THE FIELD BY THE ENGINEER.

LEGEND		THERMOPLASTIC PAVEMENT MARKING - LINE 6" (WHITE) (SOLID)		THERMOPLASTIC PAVEMENT MARKING - LETTERS & SYMBOLS		MODIFIED URETHANE PAVEMENT MARKING - LINE 12" (WHITE) (SOLID)	
(A)	THERMOPLASTIC PAVEMENT MARKING - LINE 4" (YELLOW) (2-4" @ 11" C-C)	(E)	THERMOPLASTIC PAVEMENT MARKING - LINE 6" (WHITE) (SOLID)	(J)	THERMOPLASTIC PAVEMENT MARKING - LETTERS & SYMBOLS	(O)	MODIFIED URETHANE PAVEMENT MARKING - LINE 12" (WHITE) (SOLID)
(B)	THERMOPLASTIC PAVEMENT MARKING - LINE 4" (WHITE) (SOLID)	(F)	THERMOPLASTIC PAVEMENT MARKING - LINE 6" (WHITE) (6' SKIP - 2' DASH)	(K)	MODIFIED URETHANE PAVEMENT MARKING - LINE 4" (YELLOW) (2-4" @ 11" C-C)	(P)	MODIFIED URETHANE PAVEMENT MARKING - LINE 12" (YELLOW) (SOLID)
(C)	THERMOPLASTIC PAVEMENT MARKING - LINE 4" (YELLOW) (SOLID)	(G)	THERMOPLASTIC PAVEMENT MARKING - LINE 12" (WHITE) (SOLID)	(L)	MODIFIED URETHANE PAVEMENT MARKING - LINE 4" (WHITE) (SOLID)	(Q)	MODIFIED URETHANE PAVEMENT MARKING - LINE 6" (WHITE) (SOLID)
(D)	THERMOPLASTIC PAVEMENT MARKING - LINE 4" (WHITE) (30' SKIP - 10' DASH)	(H)	THERMOPLASTIC PAVEMENT MARKING - LINE 12" (YELLOW) (SOLID)	(M)	MODIFIED URETHANE PAVEMENT MARKING - LINE 6" (WHITE) (SOLID)	(R)	RAISED REFLECTIVE PAVEMENT MARKERS
		(I)	THERMOPLASTIC PAVEMENT MARKING - LINE 24" (WHITE) (SOLID)	(N)	MODIFIED URETHANE PAVEMENT MARKING - LINE 6" (WHITE) (6' SKIP - 2' DASH)		

HRG PROJECT NO.: 88660255
 HRG PROJ. CONTACT:
 FILE NAME: 255-SPT-pmk06.dgn
 PEN TABLE: 06/10/2024.tbl



USER NAME = fdonoso	DESIGNED - MIW	REVISED -
	DRAWN - AJM	REVISED -
PLOT SCALE = 100.0000' / in.	CHECKED - MIW	REVISED -
PLOT DATE = 6/25/2025	DATE - 6/25/2025	REVISED -

CITY OF AURORA

**PAVEMENT MARKING AND SIGNING PLANS
 NEW YORK STREET**

SCALE: 1"=50' SHEET 6 OF 6 SHEETS STA. 4000+00 TO STA. 4029+00

F.A.U. RTE.	PERMIT NO.	COUNTY	TOTAL SHEETS	SHEET NO.
	045-92304	KANE	186	84
CONTRACT NO.				
ILLINOIS FED. AID PROJECT				