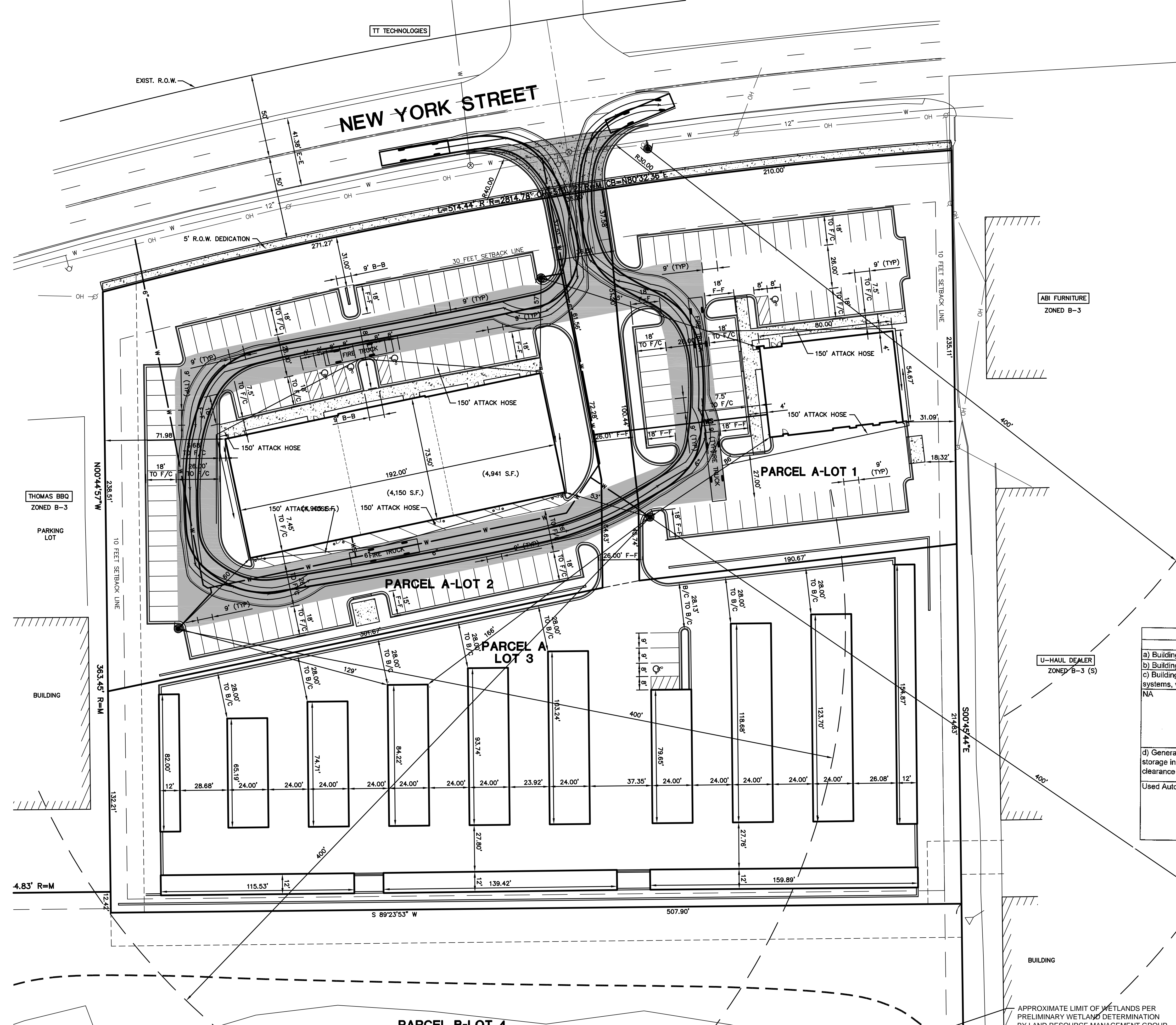
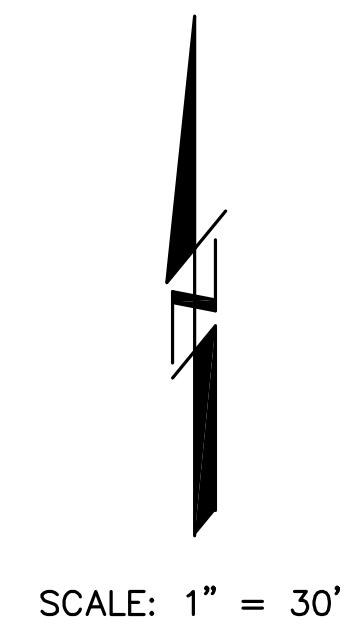


FIRE ACCESS PLAN FOR FOX VALLEY SQUARE SUBDIVISION



LEGEND

- FIRE HYDRANT
- VALVE IN VAULT
- ▭ FIRE APPARATUS ACCESS ROAD

FIRE APPARATUS ACCESS PAVEMENT

1. 1.5" HOT MIX ASPHALT SURFACE COURSE, MIX C, N-50
2. 4.5" HOT MIX ASPHALT BINDER COURSE, MIX C, N-50
3. BITUMINOUS MATERIALS (PRIME COAT) 0.3 GAL/SY
4. 10" AGGREGATE BASE COURSE, TY B, CA-6

AURORA feet

- Width : 8.33
- Track : 7.50
- Lock to Lock Time : 6.00
- Steering Angle : 40.00

Fire Access Plan Data Table		
Description	Value	Unit
a) Building Height	19'-9"	feet
b) Building Square Footage (typical)	Auto 4380, Spec square feet	
c) Building fire suppression information including any proposed use of sprinkler systems, fire alarm systems, whether fire extinguishers are needed:	NA	
d) General description of business to be conducted within each building including: will there be rack storage in the building, will there be storage of combustible materials over twelve feet in height, clearance of sprinkler heads and stored materials (18 inch minimum):	Used Auto Sales, Spec Office, Spec Retail, Self Storage	

APPROXIMATE LIMIT OF WETLANDS PER PRELIMINARY WETLAND DETERMINATION BY LAND RESOURCE MANAGEMENT GROUP DATED JANUARY 2015

<p>INTECH CONSULTANTS, INC. ENGINEERS - SURVEYORS 1889 UNIVERSITY LANE, SUITE D LISLE, ILLINOIS 60532 PHONE: 630-964-9656</p>	<p>3-20-17 2-16-17 1-16-17</p> <p>PER CLIENT REVIEW PER CITY REVIEW DATE</p>
<p>OWNER & PETITIONER: FOX VALLEY PROPERTY SERVICES, LLC 1667 E. NEW YORK STREET AURORA, ILLINOIS</p>	
<p>FOX VALLEY SQUARE SUBDIVISION</p>	
<p>FIRE ACCESS PLAN</p>	
<p>SCALE: 1"=30'</p>	
<p>DATE: 11-14-16</p>	
<p>DRAWN: SJP</p>	
<p>DESIGNED: CP</p>	
<p>PROJECT NO: 2014-019A</p>	
<p>SHEET 1 OF 1</p>	

M:\CAD Projects\2014\019A\DWG\2014-019A-FIRE-REV-03.dwg FIRE_32/10/17 5:26:52 AM SJP