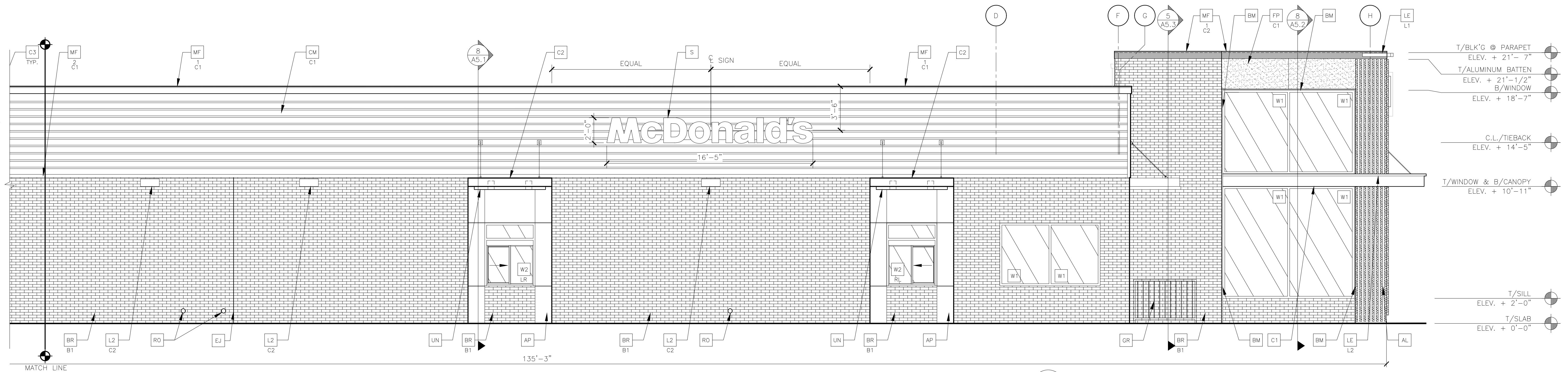
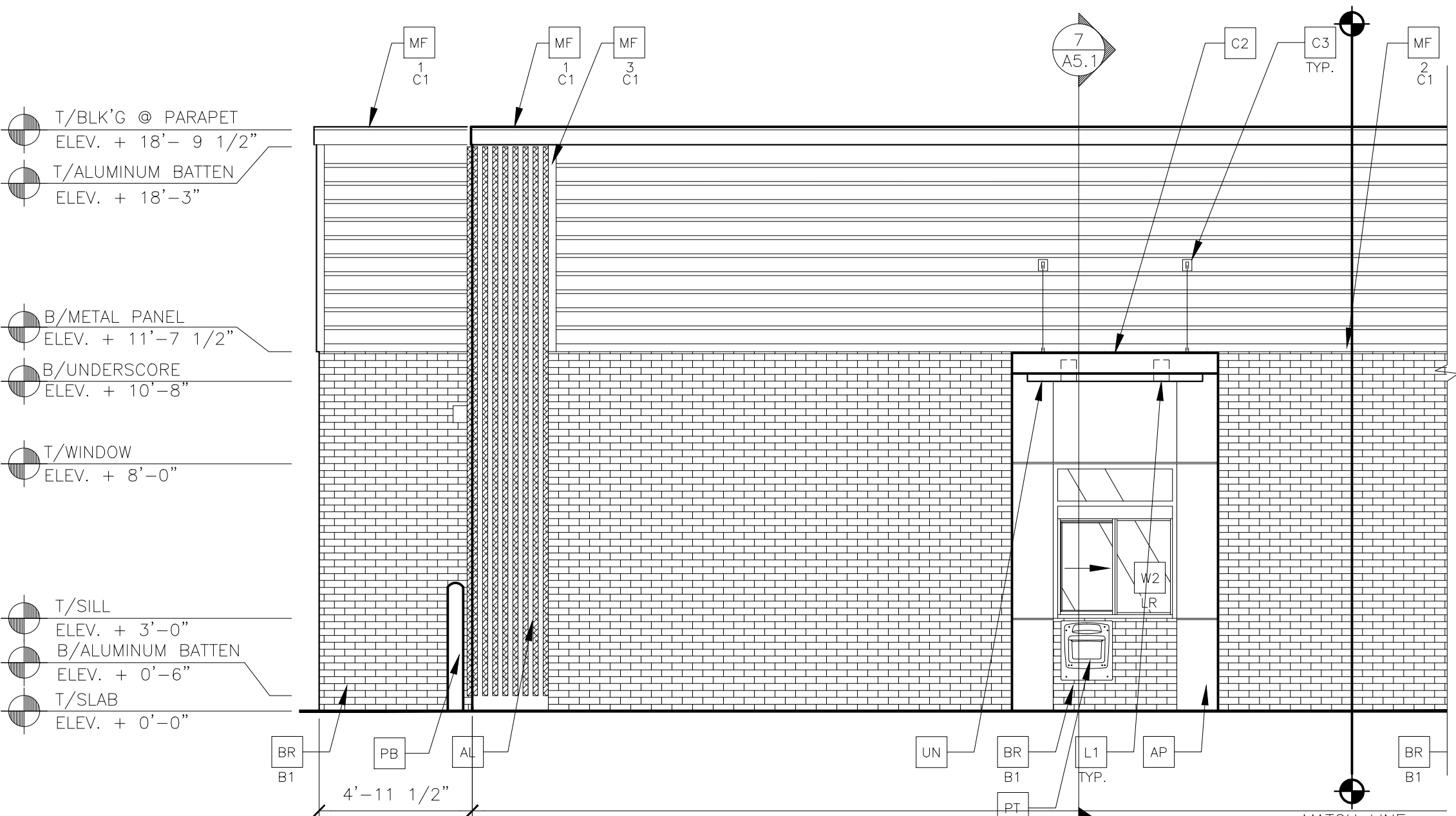


CONTINUED THIS SHEET—SEE 2/A2.1

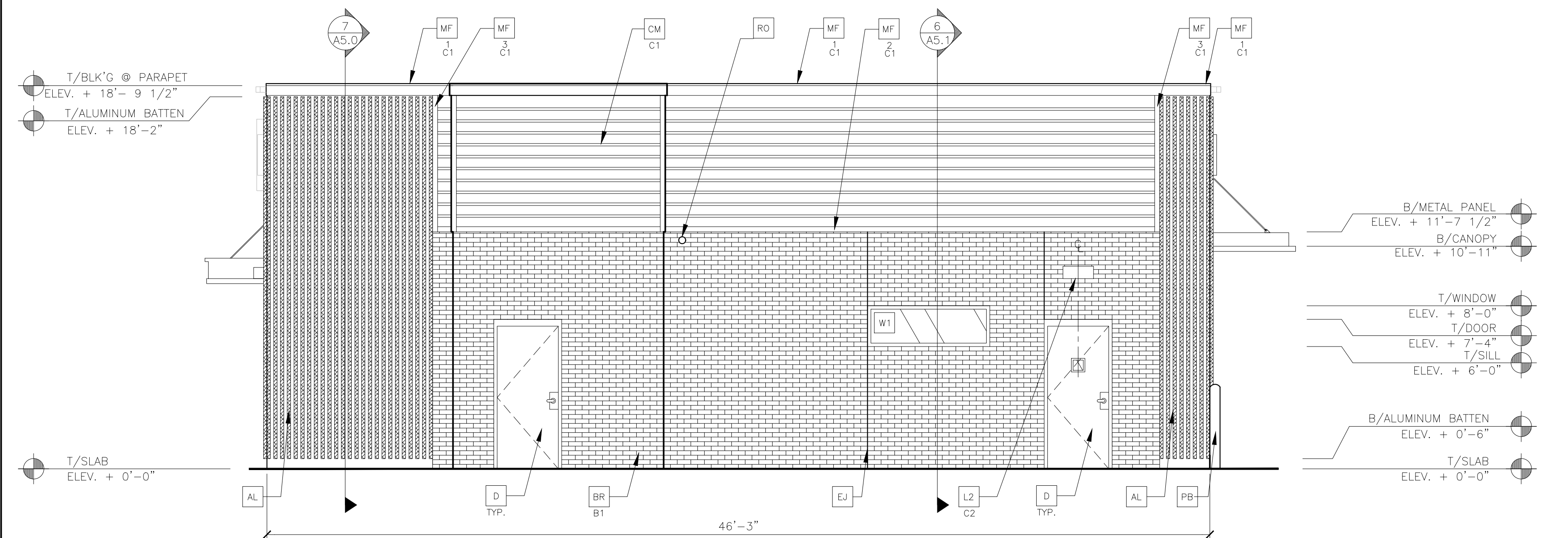


1 NORTH ELEVATION
1/4" = 1'-0"



2 NORTH ELEVATION (CONT.)
1/4" = 1'-0"

CONTINUED THIS SHEET—SEE 1/A2.1



3 EAST ELEVATION
1/4" = 1'-0"

KEY NOTES:

<p>AL ALUMINUM BATTEN SYSTEM MFR: AWNEX SIZE: 2"x2" PROFILE COLOR: WOOD GRAIN, BACKRAIL UNFINISHED, END CAP PAINTED TO MATCH SUBSTRATE: 1/2" LP SMARTBOARD SUBSTRATE COLOR: RAL 7022</p> <p>AP ALPOLIC METAL PANEL (COLOR: RAL 7022)</p> <p>BR B1—COLOR: B1 = "STEEL GREY" K12-3008 BY GLEN GERY</p> <p>C1 ALUMINUM CANOPY SYSTEM W/FASCIA COLOR: WHITE</p>	<p>C2 ALUMINUM CANOPY SYSTEM COLOR: RAL 7022</p> <p>C3 ALUMINUM CANOPY TIEBACK COLOR: RAL 7022</p> <p>CJ CONTROL JOINT 1—TYPE: 1 = EIFS</p> <p>CM 7" REVEAL METAL WALL PANEL SYSTEM BY METAL ERA C1—COLOR: C1 = WEATHERED ZINC C2 = PLATINUM SILVER</p> <p>D HOLLOW METAL DOOR PAINT: "AMHURST GRAY" BM-HC-167 BY BENJAMIN MOORE</p>	<p>DC DECAL BY GRAPHICS SUPPLIER SURFACE APPLIED, FIELD INSTALLED, PRE CUT, PRE SPACED. (SUPPLIER VARIES PER REGION. VERIFY WITH ACM) SUPPLIERS: VOMELA (865) 330-7337, ann.bowen@vomela.com GFX INTERNATIONAL (847) 543-4600, mcdonaldsdecor@gfxi.com</p> <p>EJ EXPANSION JOINT, SEE DETAIL 7/A4.1</p> <p>FB CO2—CO2 = BULK CO2 FILL BOX (EQPM SCHEDULE ITEM 49.00) BO = BULK OIL FILL BOX (EQPM SCHEDULE ITEM 700.18)</p> <p>FP FIBER CEMENT PANEL C1—COLOR: C1 = RAL 7022</p>	<p>GR GUARD RAIL—SEE SITE PLAN FOR EXACT LOCATION AND LENGTH PAINT: RAL 7022</p> <p>L1 RECESSED DOWN LIGHT FIXTURE—SEE ELECTRICAL COLOR: GOLD</p> <p>L2 RADIAL SCONCE LIGHT FIXTURE—SEE ELECTRICAL C1—COLOR: C1 = WHITE C2 = PLATINUM SILVER</p> <p>LE ACCENT LIGHTING—SEE ELECTRICAL L1—LED LIGHT: L1 = SLIM LED (DOWN ONLY) L2 = INTEGRAL CANOPY FIXTURE L3 = UP ONLY FLOOD FIXTURE</p>	<p>MF METAL FASCIA C1—TYPE: 1 = PRE-FAB ANCHOR-TITE FASCIA 2 = BOTTOM TRIM AT METAL REVEAL PANEL 3 = VERTICAL TRIM AT METAL REVEAL PANEL CORNERS, CLOSURES COLOR: C1 = WEATHERED ZINC C2 = RAL 7022</p> <p>PB PIPE BOLLARD - PAINTED YELLOW</p> <p>PT (RMHC) COIN COLLECTOR MODEL: #WPT STD CALL 1-888-743-7435 TO ORDER</p> <p>RO ROOF DRAIN OVERFLOW PIPE PAINT TO MATCH SURROUNDING MATERIAL</p>	<p>S McDONALD'S SIGNAGE BY OTHERS - UNDER SEPARATE PERMIT.</p> <p>UN METAL UNDERSCORE COLOR: GOLD</p> <p>W1 EXTERIOR WINDOW ASSEMBLY - TEMPERED GLASS COLOR: EXTRA DARK BRONZE</p> <p>W2 DRIVE-THRU WINDOW BY READY ACCESS MODEL: 600 SERIES, 36" SERVICE HEIGHT WITH TRANSOM, MANUAL OPEN; ELECTRONIC RELEASE COLOR: DEEP BRONZE XX—SLIDE DIRECTION: RL = RIGHT TO LEFT LR = LEFT TO RIGHT</p>
---	---	--	---	---	---

PREPARED BY: **CORE STATES GROUP**
270 Commerce Lane, Oak Brook, ILLINOIS 60521
www.corestatesgroup.com

PREPARED FOR: **McDonald's USA, LLC**
These drawings and specifications are the confidential and proprietary property of McDonald's USA, LLC and shall not be copied or reproduced without written authorization. The contract documents were prepared for the use on a different site or at a later time. Use of these drawings for reference or example on another project requires the contract documents for reuse on another project is not authorized.

© 2018 McDonald's USA, LLC

DRAWN BY: B.GILLIN	DATE: 2017-10	REVIEWED BY: K.TESKA	DATE ISSUED: 6/21/2018	C.S.G. PROJECT #	MCD.244.70
TITLE: 2017 STANDARD BUILDING	45114 PP - WOOD/WOOD	DESCRIPTION: WOOD BEARING WALLS W/4" BRICK EXTERIOR FINISH & CI WOOD ROOF TRUSS FRAMING	FIBER CEMENT PANEL/BATTEN/METAL PANEL/BRICK EXTERIOR	SITE ADDRESS: AURORA, IL 60506	012-2695.00
SHEET NO. A2.1	ELEVATIONS				

Elevation Data Table: Ground Signage			
Ground Sign #	Description	Value	Unit
1	i) Length of street frontage - on which Sign is Located	249	Feet
	ii) Width of Sign Face	12.50	Feet
	iii) Height of Sign Face	4.00	Feet
	vi) Square Footage of Sign Face	50	Square Feet
	v) Height of Sign (overall)	8	Feet
	vi) Width of Sign (overall)	13	Feet
	vii) Type of Sign	NextGen 4'x9' Monument	
	viii) Type of Sign Base	By Others	
	ix) Is there a Digital Display	Yes	
	If Yes then, Location of Digital Display on the sign	Upper Corner	
	Height of Digital Display	3	Feet
	Width of Digital Display	5	Feet
Square Footage of Digital Display	15	Square Feet	
Percent of Digital Display Sign Coverage	30%	Percent	
Ground Sign #	Description	Value	Unit
2	i) Length of street frontage - on which Sign is Located	249	Feet
	ii) Width of Sign Face	1.50	Feet
	iii) Height of Sign Face	1.92	Feet
	vi) Square Footage of Sign Face	3	Square Feet
	v) Height of Sign (overall)	3	Feet
	vi) Width of Sign (overall)	2	Feet
	vii) Type of Sign	Next Gen Directional Sign	
	viii) Type of Sign Base		
	ix) Is there a Digital Display	No	
	If Yes then, Location of Digital Display on the sign		
	Height of Digital Display		Feet
	Width of Digital Display		Feet
Square Footage of Digital Display	-	Square Feet	
Percent of Digital Display Sign Coverage		Percent	

Elevation Data Table: Wall Signage			
Wall Sign #	Description	Value	Unit
South Elev	i) Width of Façade - on which Sign is Located	135.30	Feet
	ii) Height of Façade - on which Sign is Located	18.79	Feet
	iii) Square Footage of Façade - on which Sign is Located	2,542.29	Square Feet
	vi) Width of Sign Face	15.41	Feet
	v) Height of Sign Face	2.00	Feet
	vi) Square Footage of Sign Face	30.82	Square Feet
	vii) Percent of Sign Coverage - Façade on which Sign is Located	1%	Percent
Wall Sign #	Description	Value	Unit
East Elev	i) Width of Façade - on which Sign is Located	46.80	Feet
	ii) Height of Façade - on which Sign is Located	21.56	Feet
	iii) Square Footage of Façade - on which Sign is Located	1,009.01	Square Feet
	vi) Width of Sign Face	4.00	Feet
	v) Height of Sign Face	3.50	Feet
	vi) Square Footage of Sign Face	14.00	Square Feet
	vii) Percent of Sign Coverage - Façade on which Sign is Located	1%	Percent
Wall Sign #	Description	Value	Unit
South Elev	i) Width of Façade - on which Sign is Located	135.30	Feet
	ii) Height of Façade - on which Sign is Located	18.79	Feet
	iii) Square Footage of Façade - on which Sign is Located	2,542.29	Square Feet
	vi) Width of Sign Face	4.00	Feet
	v) Height of Sign Face	3.50	Feet
	vi) Square Footage of Sign Face	14.00	Square Feet
	vii) Percent of Sign Coverage - Façade on which Sign is Located	1%	Percent
Wall Sign #	Description	Value	Unit
East Elev-PlayPlace	i) Width of Façade - on which Sign is Located	46.80	Feet
	ii) Height of Façade - on which Sign is Located	21.56	Feet
	iii) Square Footage of Façade - on which Sign is Located	1,009.01	Square Feet
	vi) Width of Sign Face	11.71	Feet
	v) Height of Sign Face	2.44	Feet
	vi) Square Footage of Sign Face	28.57	Square Feet
	vii) Percent of Sign Coverage - Façade on which Sign is Located	3%	Percent
Wall Sign #	Description	Value	Unit
North Elev	i) Width of Façade - on which Sign is Located	135.30	Feet
	ii) Height of Façade - on which Sign is Located	18.79	Feet
	iii) Square Footage of Façade - on which Sign is Located	2,542.29	Square Feet
	vi) Width of Sign Face	4.00	Feet
	v) Height of Sign Face	3.50	Feet
	vi) Square Footage of Sign Face	14.00	Square Feet
	vii) Percent of Sign Coverage - Façade on which Sign is Located	1%	Percent

Elevation Data Table: Elevations		
Description	Value	Unit
a) Building Height in feet (typical)	21.58	feet
b) Total Building Square Footage (typical)	6,130.00	Square Feet
c) First Floor Building Square Footage (typical)	6,130.00	Square Feet
d) Number of building stories (typical)	1.00	Square Feet
e) Exterior Material List (including colors) for all buildings and accessory structures: Steel gray brick, fiber cement panels, wood grain aluminum, aluminum, metal coping		




PREPARED FOR: **McDonald's USA, LLC**
 DRAWN BY: B.GILLIN
 STD ISSUE DATE: 2017_10
 REVIEWED BY: K.TESKA
 DATE ISSUED: 6/21/2018
 C.S.G. PROJECT #: MCD.244.70

© 2018 McDonald's USA, LLC
 These drawings and specifications are the confidential and proprietary property of McDonald's USA, LLC and shall not be copied or reproduced without written authorization. The contractor acknowledges that these drawings are not suitable for use on a different site or at a later time. Use of these drawings for reference or example on another project requires the contractor to obtain written permission from McDonald's USA, LLC. The contractor agrees to indemnify and hold McDonald's USA, LLC harmless from and against all claims, damages, and expenses, including reasonable attorneys' fees, arising from the use of these drawings for any purpose other than that intended by McDonald's USA, LLC.

TITLE: 2017 STANDARD BUILDING
 45114 PP - WOOD/WOOD
 DESCRIPTION: WOOD BEARING WALLS W/4" BRICK EXTERIOR FINISH & CI WOOD ROOF TRUSS FRAMING
 FIBER CEMENT PANEL/BATTEN/METAL PANEL/BRICK EXTERIOR
 SITE ID: 012-2695
 SITE ADDRESS: AURORA, IL 60506

SHEET NO. **A2.2**
 ELEVATIONS

REV. DATE DESCRIPTION
 BY:

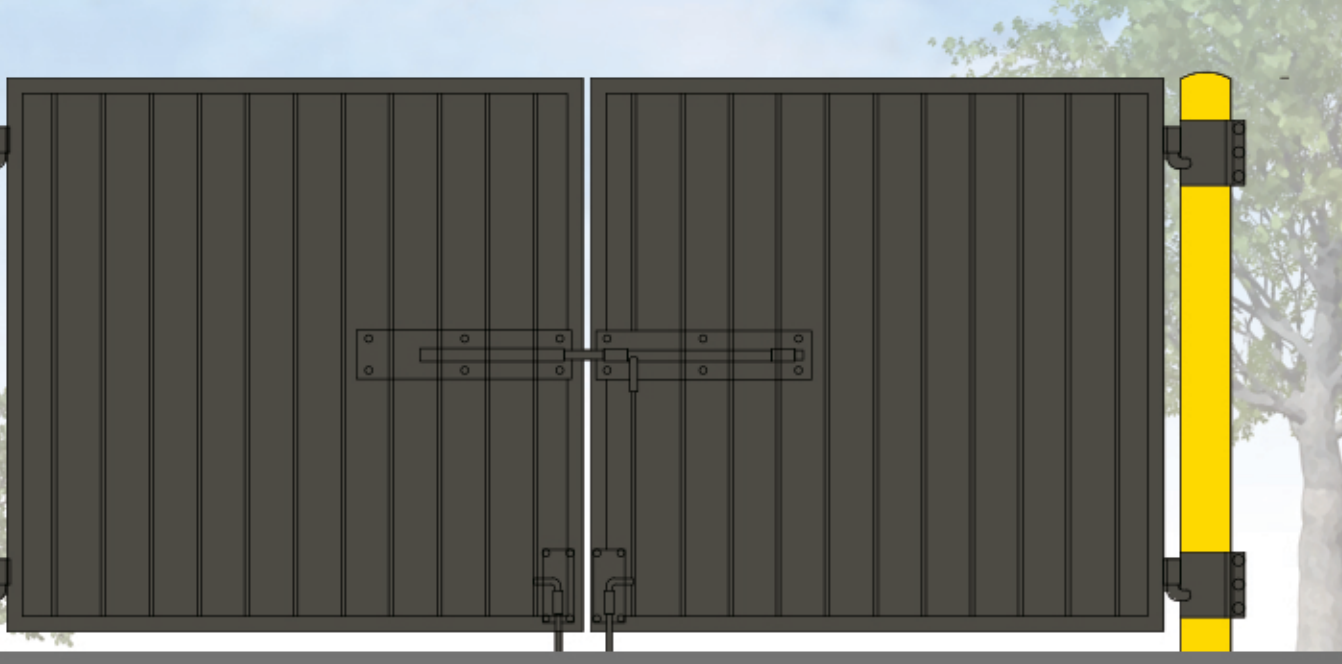
Materials Legend	
	Brick (Main Building) "Steel Grey" by Glen Grey
	Metal Coping and Accent Paint "RAL 7022"
	Pipe Bollards

T/WALL
ELEV. + 6'-8"



Right and Left Elevation

T/SLAB
ELEV. + 0'-0"



Trash Enclose Gate in Detail

T/GATE
ELEV. + 6'-0"

T/SLAB
ELEV. + 0'-0"

T/WALL
ELEV. + 8'-5"



Front Elevation

T/SLAB
ELEV. + 0'-3"

T/WALL
ELEV. + 6'-8"

T/SLAB
ELEV. + 0'-0"

T/WALL
ELEV. + 6'-8"



Rear Elevation

T/SLAB
ELEV. + 0'-0"

T/WALL
ELEV. + 8'-5"

T/SLAB
ELEV. + 0'-3"



Front Elevation

Materials Legend	
	Brick (Main Building) "Steel Grey" by Glen Grey
	Fiber Cement Panel (Accent) "RAL 7022"
	2x2 Aluminum (Wood Grain)
	Aluminum Canopy (Prefinished Metal) Charcoal
	Aluminum Canopy (Prefinished Metal) White
	Metal Underscore (Prefinished Metal) Gold
	Metal Framing Deep Bronze
	Window Glazing
	Reveal Panel Weathered Zinc
	Metal Coping "RAL 7022"
	Metal Coping Weathered Zinc



Rear Elevation



Non-Drive-Thru Side Elevation




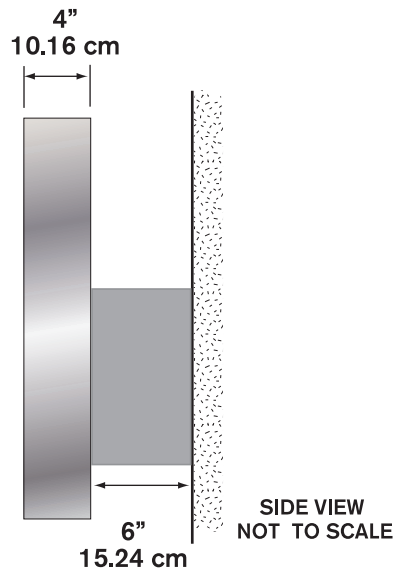
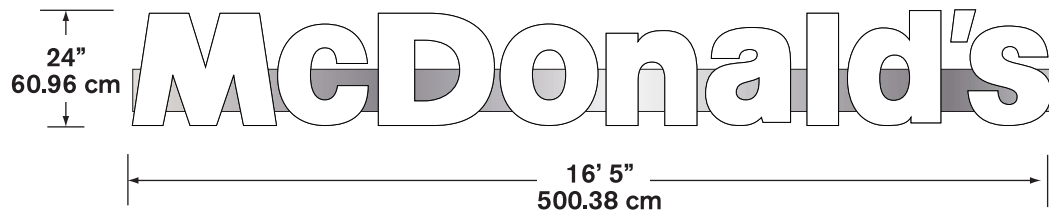
Drive-Thru Side Elevation







		DISCLAIMER: Renderings are for graphic purposes only and not intended for actual construction dimensions. For windload requirements, actual dimensions and mounting detail, please refer to engineering specifications and install drawings. These drawings and designs are the exclusive property of Everbrite LLC Use of, or duplication in any manner without express written permission of Everbrite LLC is prohibited.	
Customer: MCD: McDonald's Corp.		Description: Custom Next Gen Monument w/EMC @ 8' OAH	Customer Approval: Graphics and colors on file will be used unless otherwise specified by customer. Please review drawing carefully. By signing below, you agree to graphics as shown above, and to location of sign as shown. Please return signed copy back to Everbrite.
Project No: 389514-1	Scale: NTS		
Date: 8/27/18	Drawn By: KW	Revised: 8/27/18	CUSTOMER SIGNATURE _____ DATE _____
Location: 2011 W Galena Plz Aurora, IL 60506	Site No: NN03144-4	Revised:	LANDLORD SIGNATURE _____ DATE _____



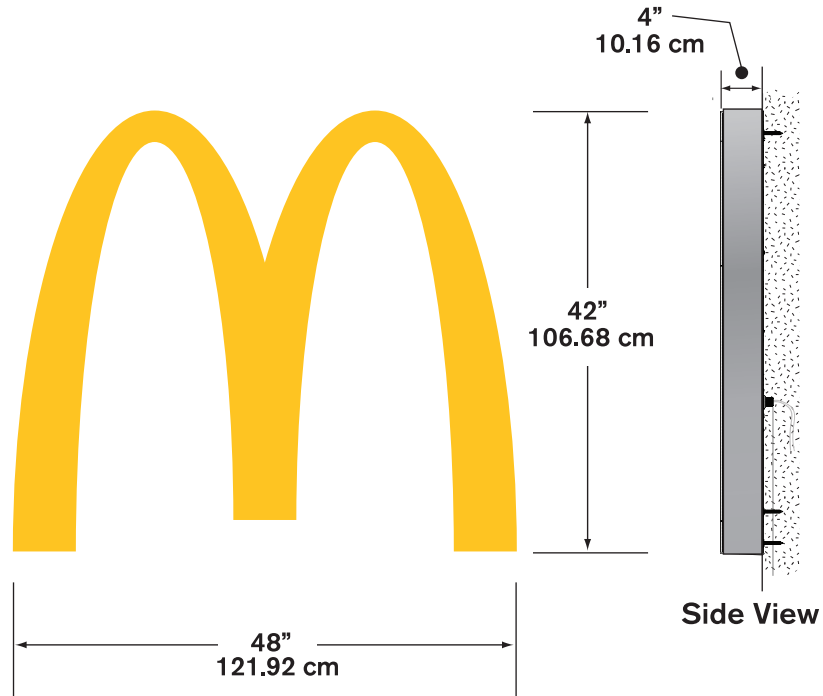
Illumination: LED

Electrical: 1.6 AMPS

Power Supply: (1) Amperor ANP90-30P1

Ship Weight:

42" NextGen Illuminated Building Arch - LED



Illumination: LED

Electrical: .35 AMPS

Ballast: (1) OSRAM OT75-120-277-24

Ship Weight:

Next Gen 3 Sq. Ft. Directionals



Illumination: LED

Electrical: .25 amps

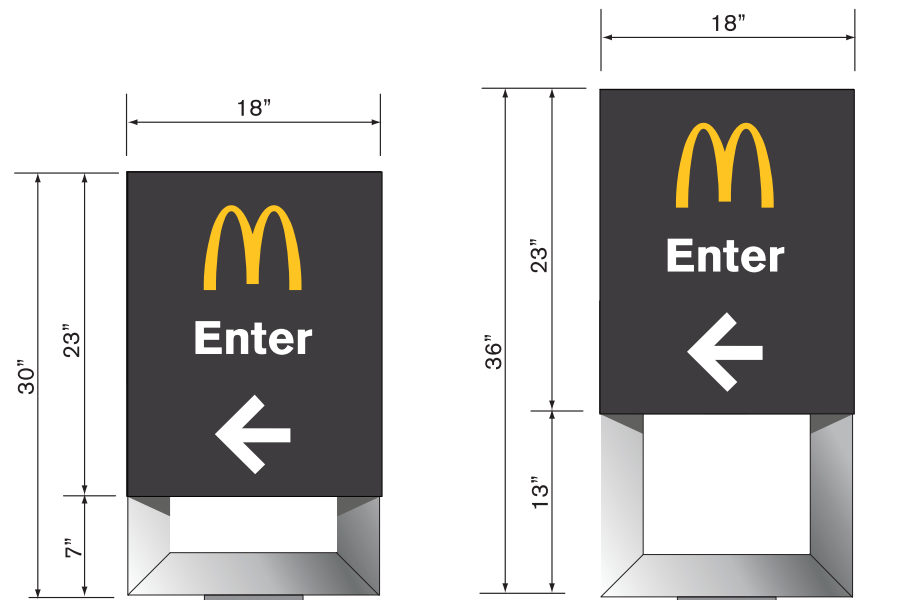
Power Supply: Amperor ANP90-30P1

Ship Weight:

Face Details: Laser cut aluminum faces painted charcoal, white illuminated copy and arrow. Optional illuminated gold arch.

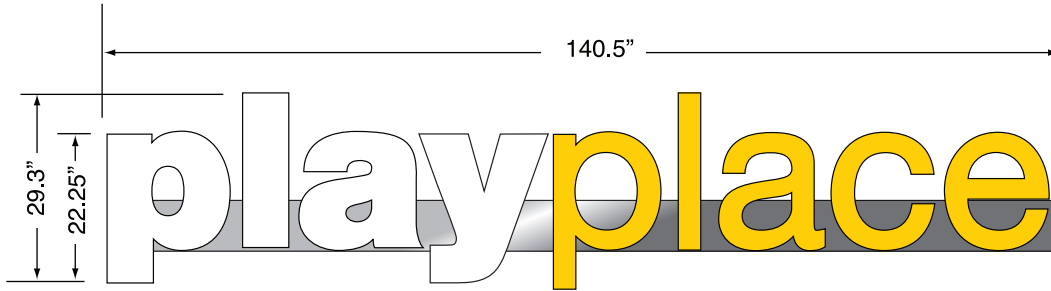
Available Copy: Enter
Exit
Welcome
Thank You
Drive Thru

Available Height Options: 36"
30"

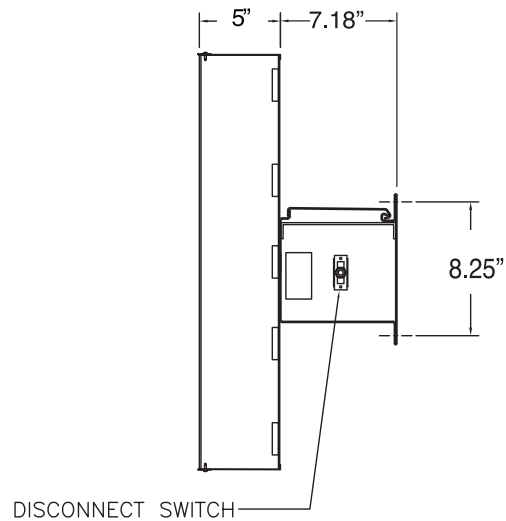


Directional With Arch

Playplace Sign - LED 22.25"



- Illumination:** LED
- Electrical:** .5 amps 120V
- Power Supply:** 1 - 50 watt
- Ship Weight:** 350 lbs.



Side View