



Pylon Sign Option 2: Ogden and Longmeadow



Tradedress Rendering

Date:	09/20/2016	Artist:	Ahmed
Group:	15	Specialist:	Kogan
Branch #s:	E6	Job #:	H00991
Location:	Aurora. IL	Type:	HC

Attention: These renderings are intended to be used for conceptual Tradedress sign and site planning. They are not to be considered as construction drawings. Verification of dimensions, field conditions and local building codes is required.

In order to maintain brand consistency and integrity, for all significant tradedress upgrades please refer to the Facility and Vehicle Identification Manuals on the Operations Intranet or AdShop.

Corporate Resources are also available to help guide you on significant tradedress updates as necessary. For airport facilities consult with the Airport Facilities/Construction team or for home city locations consult your Corporate Operations team.

Specified Sherwin Williams® paints are listed below. The colors that are being recommended to complete the above rendering will be marked with a 'X'. Contact your local Sherwin Williams Representative for specific paint specifications and applications at 1-800-4SHERWIN.

Used	Swatch	Color	Sherwin Williams Color Name
ENTERPRISE EXTERIOR COLORS			
X		Light Beige	SW 6140 - Moderate White (Satin)
X		Dark Beige	SW 7038 -Tony Taupe (Satin)
-		Pure White	SW 7005 - Pure White (Satin)
-		Bright White	B66W300 Series, SherCryl Gloss Ultra White
X		Black	SW 6258 -Tricorn Black (building accents)
-		Black	B66B300 - Black (sign poles)
ENTERPRISE INTERIOR COLORS			
-		Light Beige	SW 6140 - Moderate White (Eggshell or Satin)
-		Light Blue	SW 6505 - Atmospheric (Eggshell or Satin)
-		Light Green	SW 1428 - Uphill (Eggshell or Satin)
-		Medium Brown	SW 7039 - Virtual Taupe (Eggshell or Satin)

Enterprise specified Tubelite paints anodized finished or equivalent for the mullions are listed below. The colors that are being recommended will be marked with a "X". Please note that this option is not applicable for every rendering.

ENTERPRISE MULLION COLORS			
X		Brushed Alum.	Tubelite Clear 2A or 20
-		Brown	Tubelite Light Amber 2K
-		Bronze	Tubelite Dark Bronze 3K
-		Black	Tubelite Black 0D

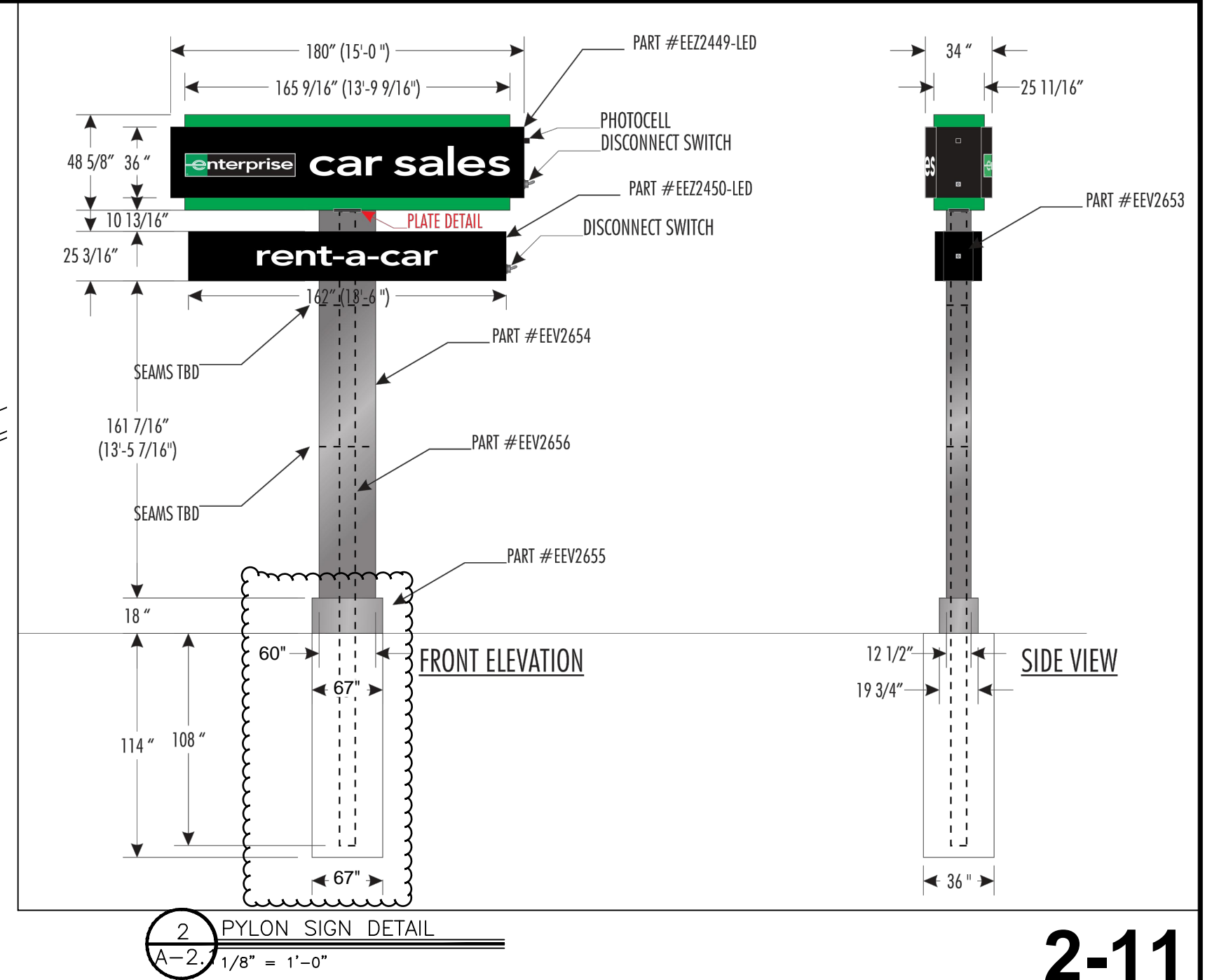
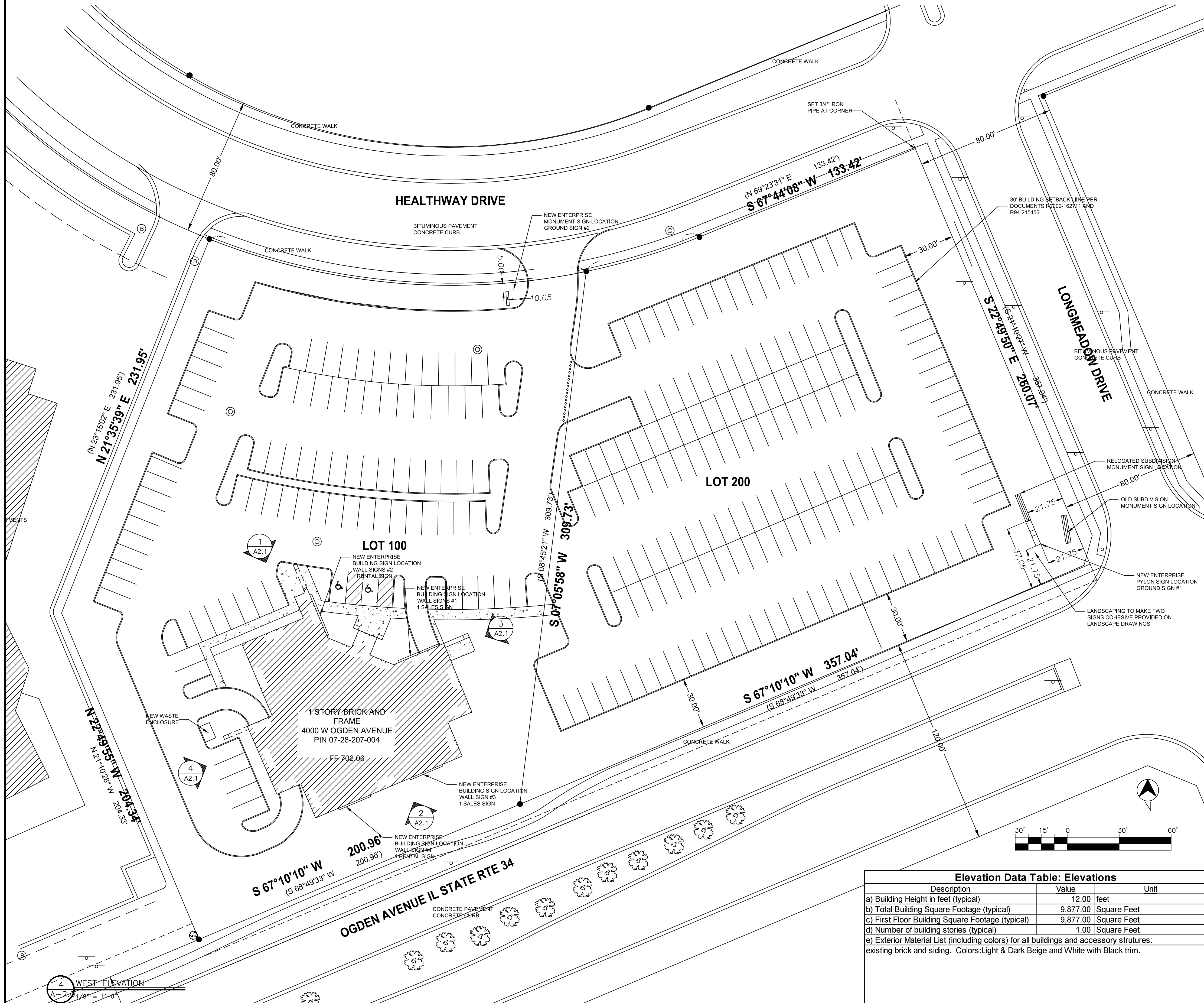
Site Location:
4000 Ogden Ave, Aurora, IL

Sign Restrictions:
Pole Sign: 80 sqft
Monument: 40 sqft
Building signs-- Healthway Dr : Maximum sqft / Ogden av: 130 sqft

Proposed Pole Sign: 77.7 sqft
Proposed Monument Sign: 40 sqft
Proposed Box signs: Ogden av-163 sqft
Proposed Box signs: Healthway Dr -255.05 sqft

ELEVATIONS

DETAILED SIGNAGE SHEETS ATTACHED.



2-11

Elevation Data Table: Ground Signage			
Ground Sign #	Description	Value	Unit
1	i) Length of street frontage - on which Sign is Located	558	Feet
	ii) Width of Sign Face	15.00	Feet
	iii) Height of Sign Face	5.20	Feet
	vi) Square Footage of Sign Face	78	Square Feet
	v) Height of Sign (overall)	22	Feet
	vi) Width of Sign (overall)	15	Feet
	vii) Type of Sign	Pylon	
	viii) Type of Sign Base	Steel pole w/ alum. shroud on conc. foundation	
	ix) Is there a Digital Display	no	
	If Yes then, Location of Digital Display on the sign		
	Height of Digital Display		Feet
Width of Digital Display		Feet	
Square Footage of Digital Display		-	Square Feet
Percent of Digital Display Sign Coverage			Percent

Ground Sign #	Description	Value	Unit	
2	i) Length of street frontage - on which Sign is Located	425	Feet	
	ii) Width of Sign Face	8.00	Feet	
	iii) Height of Sign Face	5.00	Feet	
	vi) Square Footage of Sign Face	40	Square Feet	
	v) Height of Sign (overall)	5	Feet	
	vii) Width of Sign (overall)	8	Feet	
	viii) Type of Sign		Monument	
	ix) Type of Sign Base		Concrete	
	ix) Is there a Digital Display	no		
	If Yes then, Location of Digital Display on the sign			
	Height of Digital Display			Feet
	Width of Digital Display			Feet
Square Footage of Digital Display		-	Square Feet	
Percent of Digital Display Sign Coverage			Percent	

Elevation Data Table: Wall Signage			
Wall Sign #	Description	Value	Unit
1	i) Width of Façade - on which Sign is Located	103.96	Feet
	ii) Height of Façade - on which Sign is Located	22.83	Feet
	iii) Square Footage of Façade - on which Sign is Located	2,373.75	Square Feet
	vi) Width of Sign Face	25.00	Feet
	v) Height of Sign Face	5.00	Feet
	vi) Square Footage of Sign Face	125.00	Square Feet
	vii) Percent of Sign Coverage - Façade on which Sign is Located	5%	Percent

Wall Sign #	Description	Value	Unit
2	i) Width of Façade - on which Sign is Located	103.96	Feet
	ii) Height of Façade - on which Sign is Located	22.83	Feet
	iii) Square Footage of Façade - on which Sign is Located	2,373.75	Square Feet
	vi) Width of Sign Face	25.42	Feet
	v) Height of Sign Face	5.08	Feet
	vi) Square Footage of Sign Face	129.20	Square Feet
	vi) Percent of Sign Coverage - Façade on which Sign is Located	5%	Percent

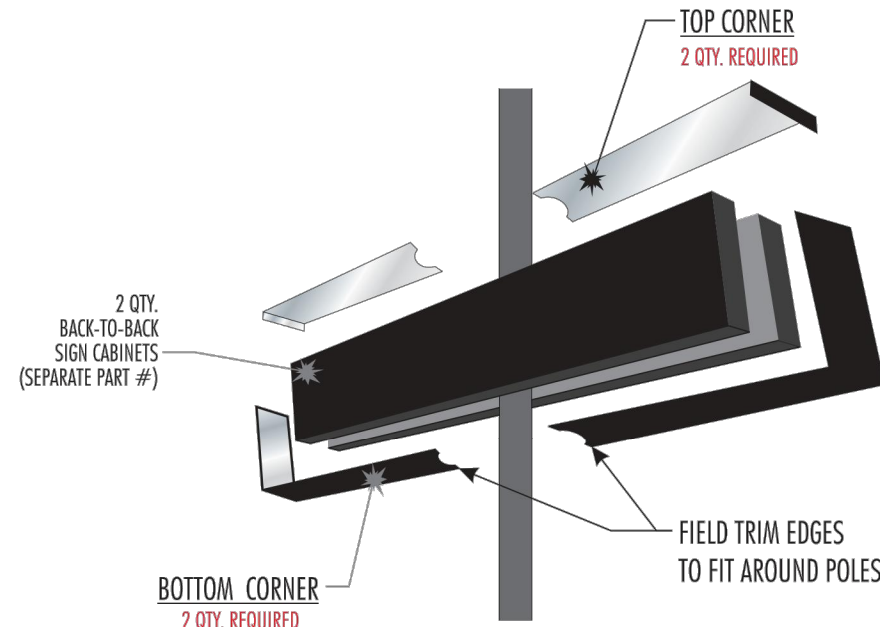
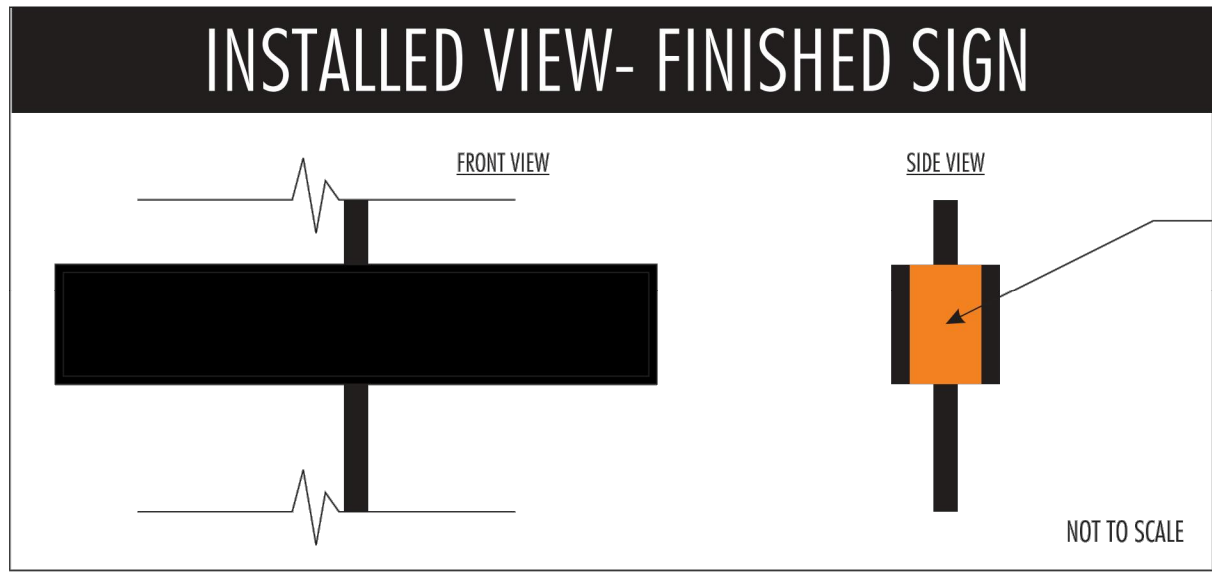
Wall Sign #	Description	Value	Unit
3	i) Width of Façade - on which Sign is Located	121.76	Feet
	ii) Height of Façade - on which Sign is Located	14.67	Feet
	iii) Square Footage of Façade - on which Sign is Located	1,786.22	Square Feet
	vi) Width of Sign Face	20.00	Feet
	v) Height of Sign Face	4.00	Feet
	vi) Square Footage of Sign Face	80.00	Square Feet
	vi) Percent of Sign Coverage - Façade on which Sign is Located	4%	Percent

Wall Sign #	Description	Value	Unit
4	i) Width of Façade - on which Sign is Located	121.76	Feet
	ii) Height of Façade - on which Sign is Located	14.67	Feet
	iii) Square Footage of Façade - on which Sign is Located	1,786.22	Square Feet
	vi) Width of Sign Face	20.42	Feet
	v) Height of Sign Face	4.08	Feet
	vi) Square Footage of Sign Face	83.30	Square Feet
	vii) Percent of Sign Coverage - Façade on which Sign is Located	5%	Percent

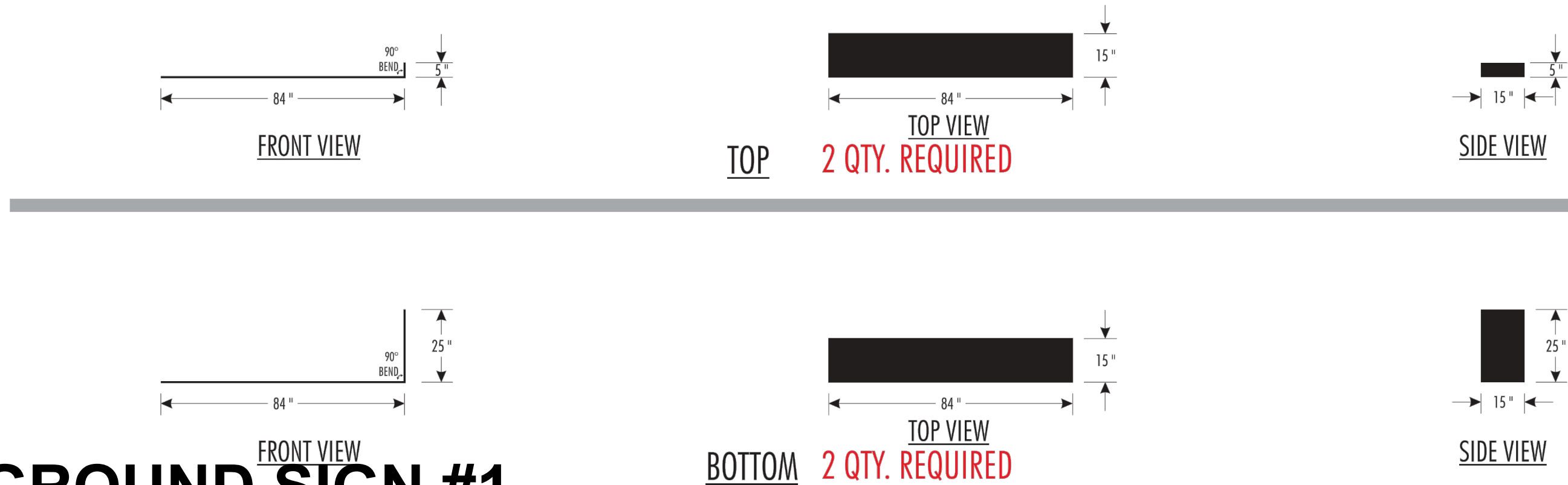
Elevation Data Table: Elevations		
Description	Value	Unit
a) Building Height in feet (typical)	12.00	feet
b) Total Building Square Footage (typical)	9,877.00	Square Feet
c) First Floor Building Square Footage (typical)	9,877.00	Square Feet
d) Number of building stories (typical)	1.00	Square Feet
e) Exterior Material List (including colors) for all buildings and accessory structures: existing brick and siding. Colors: Light & Dark Beige and White with Black trim.		

ELEVATIONS

INSTALLER TO TRIM PIECES IN FIELD




PERSPECTIVE INSTALLATION VIEW



GROUND SIGN #1

THIS IS A KIT PART ORDER

EEZ2449-KP EEV2653 4 OF 7



SignResource

IDENTITY GROUP

6135 District Blvd • Maywood, CA 90270

800.423.4283 • Fax 323.560.7143

Website: www.signresource.com

REVISION HISTORY:

REV

DATE

REVISION BY

UPDATED BY

A

04/19/16

CC

BS

INITIAL DRAWING

PARTS LIST:

ITEM

DESCRIPTION

A

B

C

D

E

MATERIAL LIST

1

2

3

4

5

UL

THIS SIGN IS INTENDED TO BE INSTALLED IN ACCORDANCE WITH THE REQUIREMENTS OF ARTICLES 405 OF THE NATIONAL ELECTRIC CODE AND/OR OTHER APPLICABLE LOCAL CODES. THIS REQUIRES PROPER GROUNDING AND BONDING OF THE SIGN.

GENERAL NOTES

1. TOLERANCE (UNLESS NOTED)
• GRAPHICS $\pm 1/8"$ • FACE SIZE $\pm 1/16"$ •
• CABINET $\pm 1/8"$ • VINYL OVERLAP $\pm 1/8"$ •
• ALL COPY LEVEL UNLESS NOTED OTHERWISE
2. VIEWING DISTANCE 25' TO 50' UNLESS NOTED OTHERWISE
3. THIS COLOR CALOUT INDICATES USE OF SPRAYPAINT AND SYSTEM
4. NO DEVIATION OR MATERIAL SUBSTITUTION WITHOUT ECL
5. ALL ELECTRICAL SIGNS TO COMPLY WITH UL 48

ENTERPRISE CLADDING
FOR SIGN CABINET

DRAWN BY

BRIAN S.

CHECKED BY

CLIENT

ENTERPRISE HOLDINGS

LOCATION

AURORA, IL

DATE

04/19/16

DRAWING NO.

EEV2653

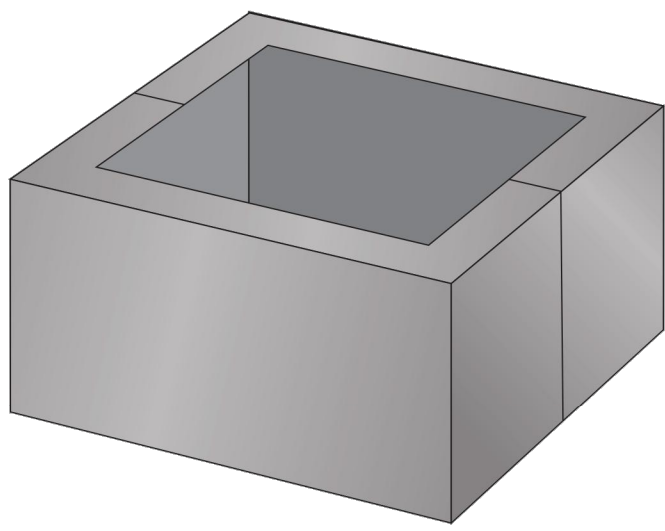
REV.

A

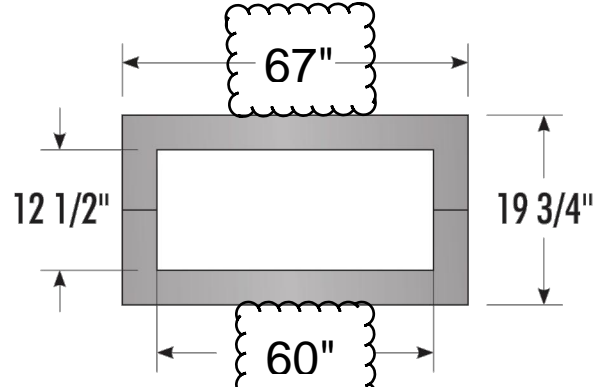
SHEET

1 OF 1

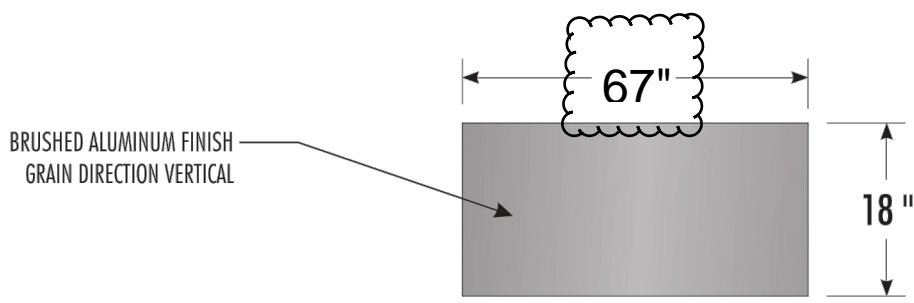
THIS SIGN IS INTENDED TO BE INSTALLED IN ACCORDANCE WITH THE REQUIREMENTS OF ARTICLES 405 OF THE NATIONAL ELECTRIC CODE AND/OR OTHER APPLICABLE LOCAL CODES. THIS REQUIRES PROPER GROUNDING AND BONDING OF THE SIGN.



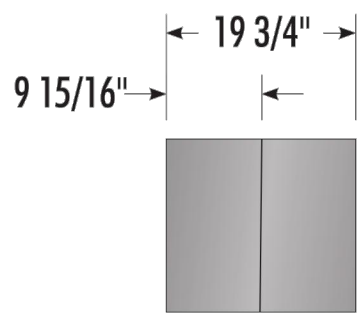
ISOMETRIC VIEW



TOP VIEW



FRONT VIEW




SIDE VIEW

GROUND SIGN #1

THIS IS A KIT PART ORDER

EEZ2449-KP EEV2655 6 OF 7



6135 District Blvd • Maywood, CA 90270
800.423.4283 • Fax 323.560.7143
Website: www.signresource.com

REVISION HISTORY:

REV	DATE	REVISION BY	UPDATED BY
A	04/19/16	CC	BS


DRAWING ORIENTATION

PARTS LIST:

ITEM	DESCRIPTION
A	1 Pylon Field Mounted Alarm, Vertical Alarm
B	
C	
D	
E	

MATERIAL LIST

1	Down ACB
2	
3	
4	
5	



THIS SIGN IS INTENDED TO BE INSTALLED IN ACCORDANCE WITH THE REQUIREMENTS OF ARTICLES 106 OF THE NATIONAL ELECTRICAL CODE AND ANY OTHER APPLICABLE LOCAL CODES. THIS INCLUDES PROPER GROUNDING AND BONDING OF THE SIGN.

GENERAL NOTES

1. TOLERANCE (UNLESS NOTED)
• GRAPHICS $\pm 1/8"$ • FACE SIZE $\pm 1/16"$ •
• CABINET $\pm 1/8"$ • VINYL OVERLAP $\pm 1/8"$ •
• ALL COPY LEVEL UNLESS NOTED OTHERWISE
2. VIEWING DISTANCE 25' TO 50' UNLESS NOTED OTHERWISE
3. THIS COLOR CALOUT INDICATES USE OF SPRAYPAINT AND SYSTEM
4. NO DEVIATION OR MATERIAL SUBSTITUTION WITHOUT ECL
5. ALL ELECTRICAL SIGNS TO COMPLY WITH UL 48

EE
BASE COVER
FOR
PYLON

DRAWN BYBRIAN S.CHECKED BY

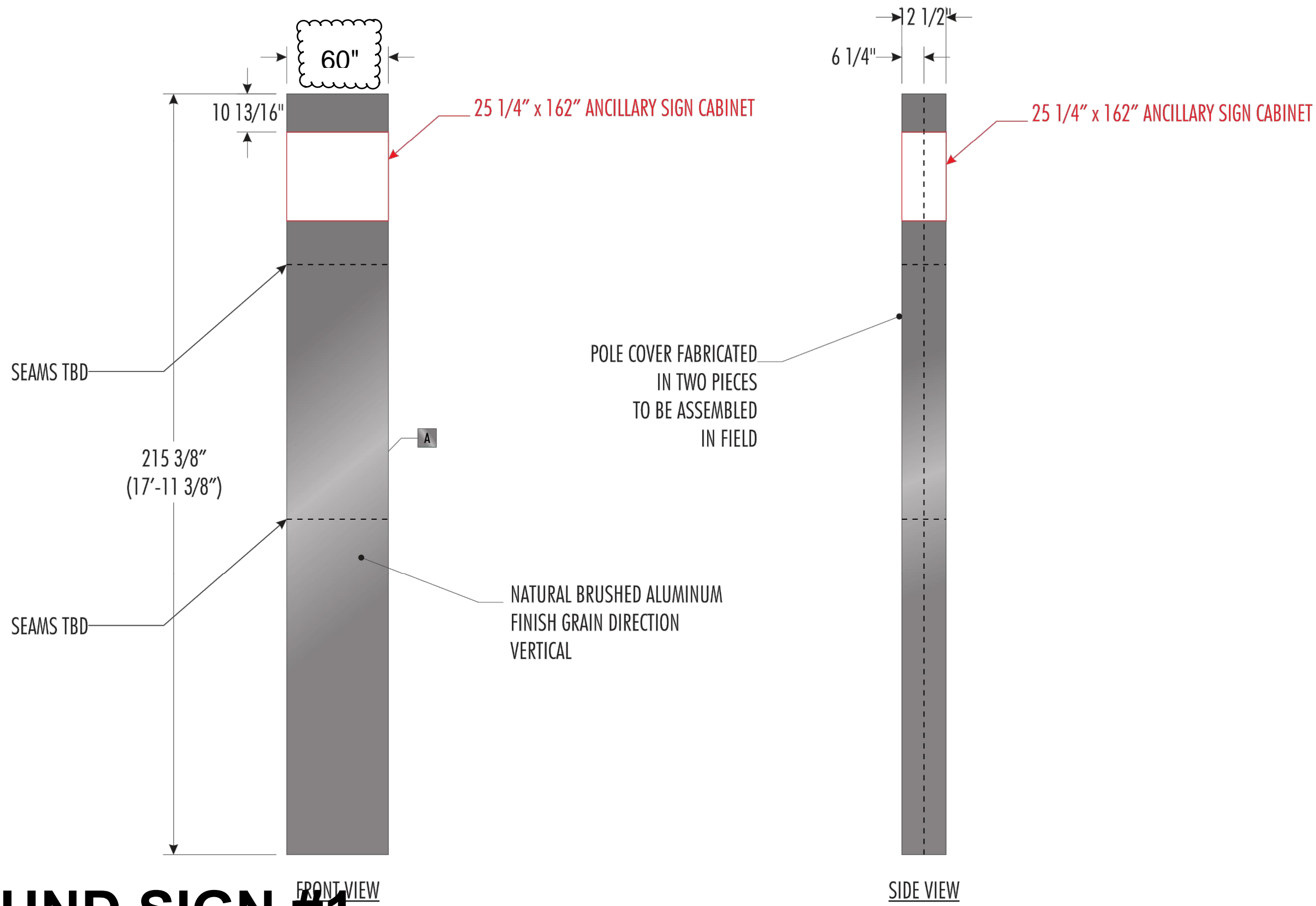
CLIENTENTERPRISE HOLDINGS

LOCATIONAURORA, IL

DATE04/19/16

DRAWING NOEEV2655REV: A SHEET 1 OF 1


NOTE: WE NEED TO SUPPLY THE SUPPORT FRAME WITH POLE COVER



GROUND SIGN #1

THIS IS A KIT PART ORDER

EEZ2449-KP EEV2654 5 OF 7



SignResource

IDENTITY GROUP


6135 District Blvd • Maywood, CA 90270

800.423.4283 • Fax 323.560.7143

Website: www.signresource.com

REVISION HISTORY:			
REV	DATE	REVISION BY	UPDATED BY
A	04/19/16	CC	BS
INITIAL DRAWING			

PARTS LIST:	
ITEM	DESCRIPTION
A	
B	
C	
D	
E	
MATERIAL LIST	
1	
2	
3	
4	
5	



THIS SIGN IS INTENDED TO BE INSTALLED IN ACCORDANCE WITH THE REQUIREMENTS OF ARTICLE 6 OF THE NATIONAL ELECTRIC CODE AND/OR OTHER APPLICABLE LOCAL CODES. THIS INCLUDES PROPER NOTATION AND MOUNTING OF THE SIGN.

GENERAL NOTES

1. TOLERANCE (UNLESS NOTED)
• GRAPHICS $\pm 1/8"$ • FACE SIZE $\pm 1/16"$ •
• CABINET $\pm 1/8"$ • VINYL OVERLAP $\pm 1/8"$ •
• ALL COPY LEVEL UNLESS NOTED OTHERWISE
2. VIEWING DISTANCE 25' TO 50' UNLESS NOTED OTHERWISE
3. THIS COLOR CALOUT INDICATES USE OF SPRAYPAINT AND SYSTEM
4. NO DEVIATION OR MATERIAL SUBSTITUTION WITHOUT ECL
5. ALL ELECTRICAL SIGNS TO COMPLY WITH UL 48

DESCRIPTION	
DRAWN BY:	BRIAN S.
CHECKED BY:	
CLIENT:	ENTERPRISE HOLDINGS
LOCATION:	AURORA, IL
DATE:	04/19/16
DRAWING NO:	EEV2654
REV:	A
SHEET #	1 OF 1

POLE COVER

THIS SIGN IS INTENDED TO BE INSTALLED IN ACCORDANCE WITH THE REQUIREMENTS OF ARTICLE 6 OF THE NATIONAL ELECTRIC CODE AND/OR OTHER APPLICABLE LOCAL CODES. THIS INCLUDES PROPER NOTATION AND MOUNTING OF THE SIGN.

SIGN RESOURCE TO PROVIDE PRIMED POLE FIELD PAINTING REQUIRED BY INSTALLER

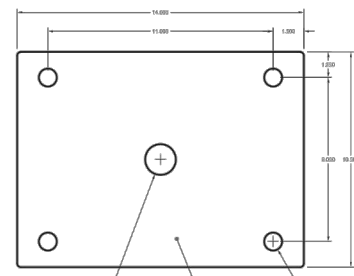
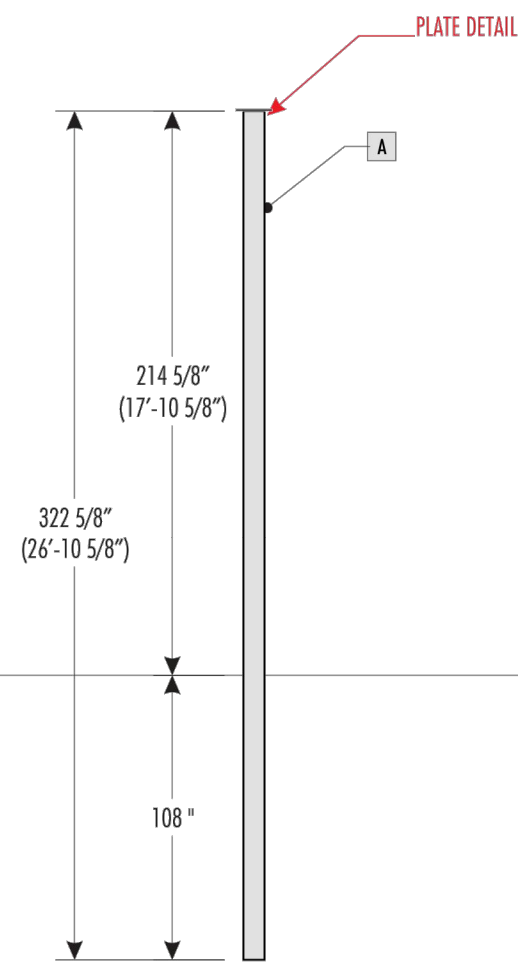



PLATE DETAIL



GROUND SIGN #1

THIS IS A KIT PART ORDER

EEZ2449-KP EEV2656 7 OF 7



6135 District Blvd • Maywood, CA 90270
800.423.4283 • Fax 323.560.7143
Website: www.signresource.com

REVISION HISTORY:

REV	DATE	REVISION BY	UPDATED BY
A	04/19/16	CC	BS


INITIAL DRAWING

PARTS LIST:

ITEM	DESCRIPTION
A	FOR COUNTRIES IS 110
B	
C	
D	
E	

MATERIAL LIST

1	1" X 1/4" SQUARE TUBE
2	
3	
4	
5	



THIS SIGN IS INTENDED TO BE INSTALLED IN ACCORDANCE WITH THE REQUIREMENTS OF ARTICLE 605 OF THE NATIONAL ELECTRIC CODE AND/OR OTHER APPLICABLE LOCAL CODES. THIS INCLUDES PROPER GROUNDING AND BONDING OF THE SIGN.

GENERAL NOTES

1. TOLERANCE (UNLESS NOTED)
• GRAPHICS $\pm 1/8"$ • FACE SIZE $\pm 1/16"$ •
• CABINET $\pm 1/8"$ • VINYL OVERLAP $\pm 1/8"$ •
• ALL COPY LEVEL UNLESS NOTED OTHERWISE
2. VIEWING DISTANCE 25' TO 50' UNLESS NOTED OTHERWISE
3. THIS COLOR CALOUT INDICATES USE OF SPRAYPAINT AND SYSTEM
4. NO DEVIATION OR MATERIAL SUBSTITUTION WITHOUT ECL
5. ALL ELECTRICAL SIGNS TO COMPLY WITH UL 48

ENTERPRISE
SQUARE TUBE W/PLATE

DRAWN BY: BRIAN S. CHECKED BY:

CLIENT: ENTERPRISE HOLDINGS

LOCATION:

DATE: 04/19/16

DRAWING NO: EEV2656 REV: A SHEET 1 OF 1