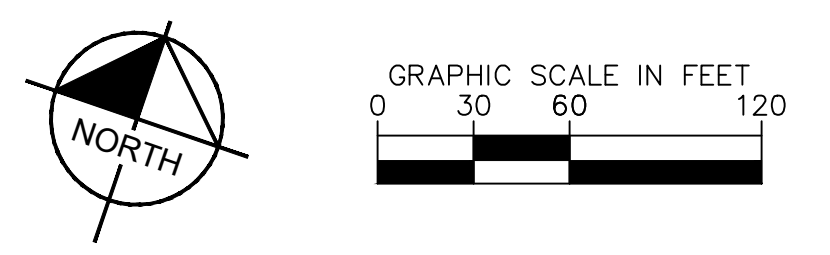
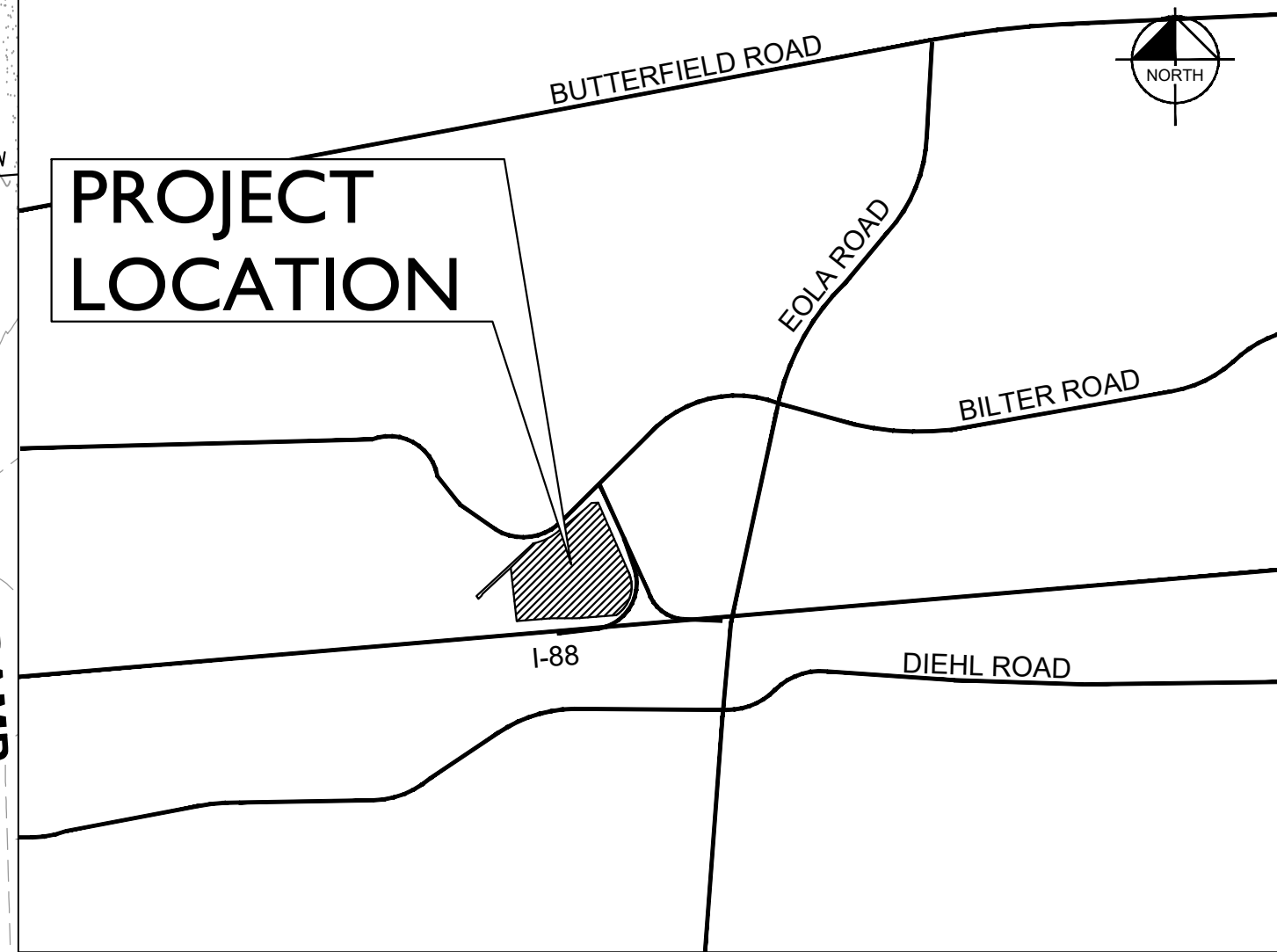


FINAL PLAN FOR LOTS 1, 2, 3, 4, & 5 OF THE BUTTERFIELD SUBDIVISION PHASE II UNIT 5B



LOCATION MAP

(NOT TO SCALE)



PROJECT LOCATION

LEGEND

	STANDARD PITCH CONCRETE CURB AND GUTTER
	CONCRETE DEPRESSED CURB AND GUTTER
	PROPERTY LINE
	PROPOSED LOT LINE
	SETBACK LINE
	PROPOSED 8' SECURITY FENCE
	FUTURE DEVELOPMENT
	PROPOSED SIGN
	ADA STALL
	PROPOSED STORM SEWER LINE
	PROPOSED OPEN LID STORM STRUCTURE (PAVEMENT USE NEENAH R-2540) (GRASS USE NEENAH R-4340-B BEEHIVE)
	PROPOSED CLOSED LID STORM STRUCTURE (PAVEMENT USE NEENAH R-1713) (GRASS USE NEENAH R-1786)
	PROPOSED SANITARY SEWER LINE
	PROPOSED SANITARY MANHOLE
	PROPOSED WATER LINE
	PROPOSED VALVE VAULT
	PROPOSED FIRE HYDRANT
	STANDARD DUTY ASPHALT PAVEMENT
	HEAVY DUTY ASPHALT PAVEMENT
	CONCRETE PAVEMENT
	HEAVY DUTY CONCRETE PAVEMENT
	COMED GRAVEL SUBSTATION
	TOWER GRAVEL PAD
	GRASSCRETE

DEVELOPMENT DATA TABLE

OVERALL SITE DATA	
TAX/PARCEL IDENTIFICATION NUMBER (PIN)	07-06-401-013
PROPOSED LAND USE	ELECTRONIC DATA STORAGE
TOTAL PROPERTY SIZE	32.08 ACRES
TOTAL LOT COVERAGE	1,397,439 SF
OPEN SPACE/LANDSCAPING	805,475 SF (58%)
SITE OPERATIONS PARKING	591,964 SF (42%)
COMMUNICATIONS SUPPORT FACILITY 1 AREA	1,355 SF
COMMUNICATIONS SUPPORT FACILITY 2 AREA	1,355 SF
TOTAL GROSS FLOOR AREA	567,830 SF
PROPOSED F.A.R.	0.41
ALLOWABLE F.A.R.	1.50
PROPOSED BUILDING 1 DATA:	
PARKING SPACES REQUIRED (1 SPACE/7,000 SF)	59 SPACES
PARKING SPACES PROVIDED	110 SPACES
ACCESSIBLE PARKING SPACES REQUIRED	5 SPACES
ACCESSIBLE PARKING SPACES PROVIDED	5 SPACES
TOTAL PARKING SPACES PROVIDED	115 SPACES
BUILDING AREA	411,175 SF
FUTURE BUILDING 2 DATA:	
PARKING SPACES REQUIRED (1 SPACE/7,000 SF)	22 SPACES
PARKING SPACES PROVIDED	32 SPACES
ACCESSIBLE PARKING SPACES REQUIRED	2 SPACES
ACCESSIBLE PARKING SPACES PROVIDED	2 SPACES
TOTAL PARKING SPACES PROVIDED	34 SPACES
BUILDING AREA	153,745 SF

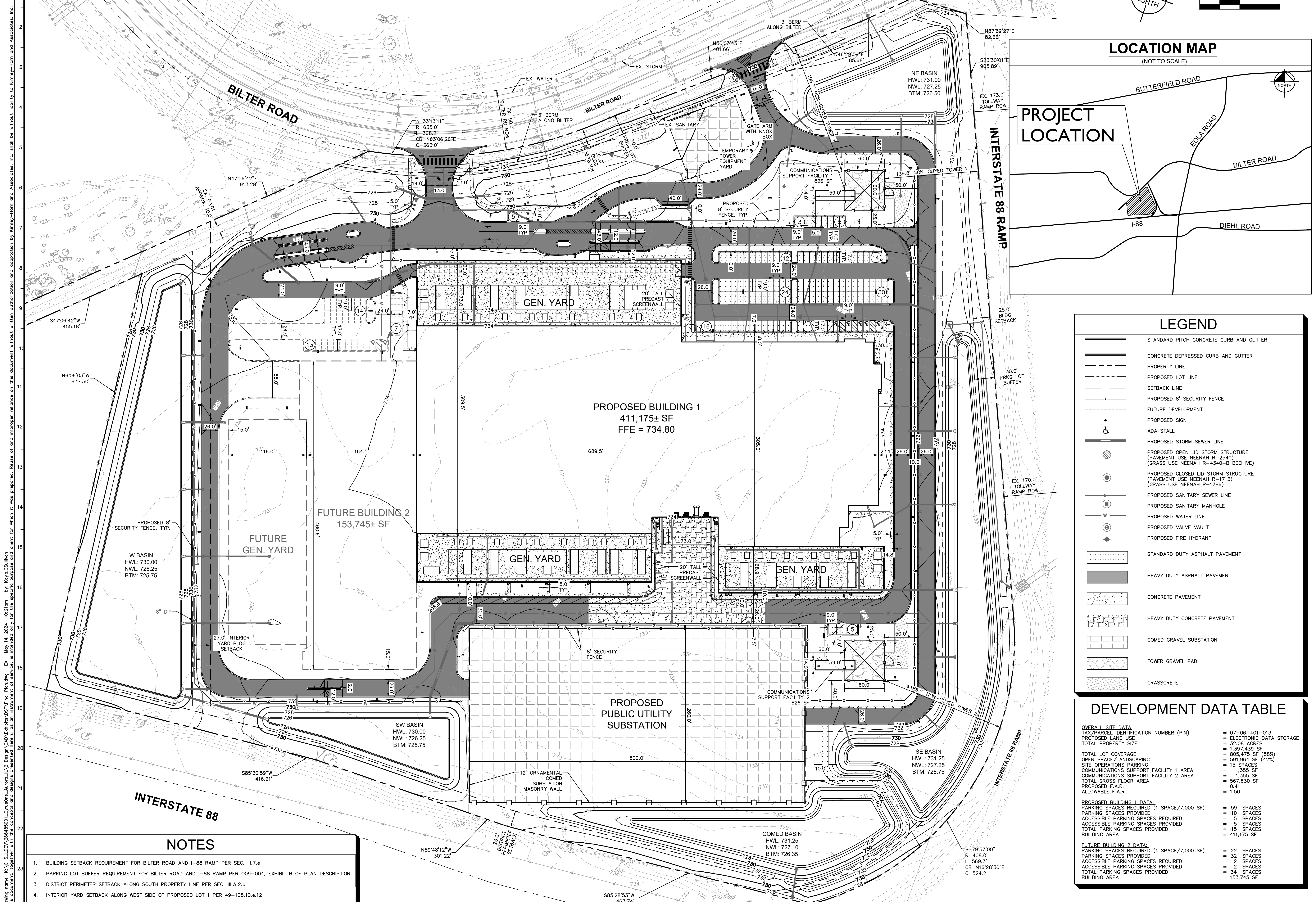
NOTES

- BUILDING SETBACK REQUIREMENT FOR BILTER ROAD AND I-88 RAMP PER SEC. III.7.e
- PARKING LOT BUFFER REQUIREMENT FOR BILTER ROAD AND I-88 RAMP PER 009-004, EXHIBIT B OF PLAN DESCRIPTION
- DISTRICT PERIMETER SETBACK ALONG SOUTH PROPERTY LINE PER SEC. III.A.2.c
- INTERIOR YARD SETBACK ALONG WEST SIDE OF PROPOSED LOT 1 PER 49-108.10.e.12

PROPOSED BUILDING 1
411,175± SF
FFE = 734.80

FUTURE BUILDING 2
153,745± SF

PROPOSED PUBLIC UTILITY
SUBSTATION



Drawing name: K:\GIS\DEV\268485001\CyrusOne_Aurora_IL_V\Design\Aurora_IL_V\Exhibits\ISTV\Final Plan.dwg EX May 14, 2024 10:21am by Koye.O'Sullivan
 This document, together with the concepts and designs presented herein, is intended only for the specific purpose and client for which it was prepared. Reuse of and improper reliance on this document without written authorization and adaptation by Kimley-Horn and Associates, Inc. shall be without liability to Kimley-Horn and Associates, Inc.

Kimley»Horn
 © 2024 KIMLEY-HORN AND ASSOCIATES, INC.
 4201 WINFIELD ROAD, SUITE 600
 AUSTIN, TEXAS 78751
 PHONE: 630-487-2550
 WWW.KIMLEY-HORN.COM

CyrusOne

FINAL PLAN FOR LOTS
1, 2, 3, 4, & 5 OF THE
BUTTERFIELD
SUBDIVISION PHASE II
UNIT 5B

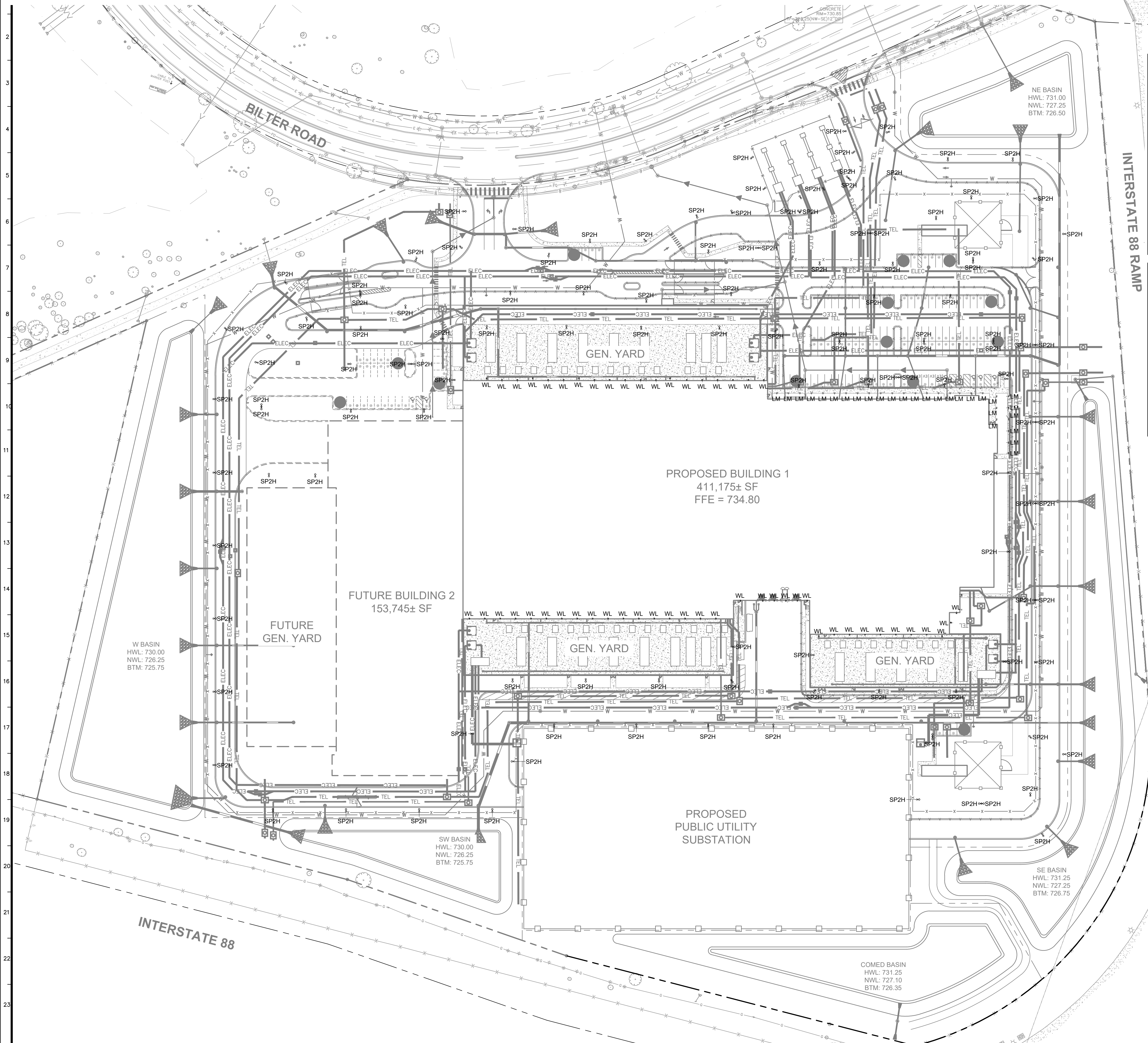
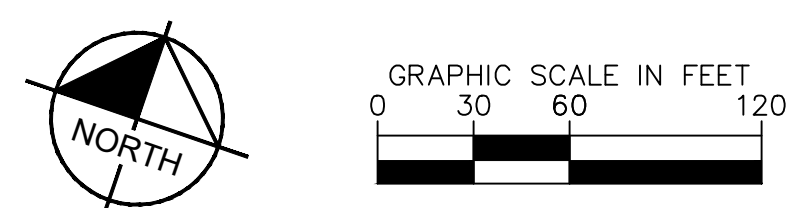
CYRUSONE AURORA
 2725 BILTER RD
 AURORA, IL 60502
 OWNER: CYRUSONE
 2850 N HARWOOD ST, STE 2200
 DALLAS, TX 75201

ORIGINAL ISSUE:
05/10/2024
 KHA PROJECT NO.
268485001

SHEET NUMBER
EX

NO.	REVISIONS	DATE	BY

FINAL PLAN FOR LOTS 1, 2, 3, 4, & 5 OF THE BUTTERFIELD SUBDIVISION PHASE II UNIT 5B



Photometric Data Table			
Description	Value	Unit	
Total proposed external lumens	1,375,289	Lumens	
Total square footage of area to be illuminated	343,700	Square Feet	
Fixture SP2H			
i) Type of Fixture (i.e. Pole, Wall Mounted)	POLE		
ii) manufacturer and model number(s)	LITHONIA LIGHTING DSX1 LED P1		
iii) Number of these Fixtures Shown	126	Fixtures	
iv) Lamp source type (bulb type, i.e. high pressure sodium, LED)	LED		
v) Lumen output and wattage per Fixture	7507/51W	Lumen/Wattage	
vi) Mounting Height / Fixture Height	30	Feet	
Fixture WL			
i) Type of Fixture (i.e. Pole, Wall Mounted)	WALL MOUNTED		
ii) manufacturer and model number(s)	LITHONIA LIGHTING DSXW1 LED 20C		
iii) Number of these Fixtures Shown	55	Fixtures	
iv) Lamp source type (bulb type, i.e. high pressure sodium, LED)	LED		
v) Lumen output and wattage per Fixture	6909/73W	Lumen/Wattage	
vi) Mounting Height / Fixture Height	20	Feet	
Fixture LM			
i) Type of Fixture (i.e. Pole, Wall Mounted)	BOLLARD		
ii) manufacturer and model number(s)	DESIGNPLAN LIGHTING INC. LM05.101207.US.06.D1.BP		
iii) Number of these Fixtures Shown	28	Fixtures	
iv) Lamp source type (bulb type, i.e. high pressure sodium, LED)	LED		
v) Lumen output and wattage per Fixture	1764/14.4W	Lumen/Wattage	
vi) Mounting Height / Fixture Height	2	Feet	

ILLUMINANCE SUMMARY							
CALC TYPE	UNITS	AVG	MAX	MIN	AVG/MIN	MAX/MIN	MAX/AVG
VIA - NORTH WEST ENTRY	FC	2.1	5.6	0.6	3.5	9.3	2.67
VIA - NORTH EAST ENTRY	FC	1.9	3.7	0.9	2.1	4.1	1.95
VIA - LOADING DOCK	FC	2.8	6.2	0.6	4.7	10.3	2.21
SUBSTATION	FC	2.5	7.4	0.1	25	74	2.96
EQUIPMENT YARD Y1	FC	2.3	6.2	0	-	-	2.7
EQUIPMENT YARD Y2	FC	2.4	6.3	0.2	12	31.5	2.63
EQUIPMENT YARD Y3	FC	2.4	6.2	0.3	8	20.7	2.58
BUILDING PERIMETER	FC	2	6.3	0.4	5	15.8	3.15
BUILDING PERIMETER - NW SIDEWALK	FC	2	3	1	2	3	1.5
AROUND SUBSTATION	FC	2.3	8.1	0.1	23	81	3.52

Drawing name: K:\GIS_DEVELOPMENT\Aurora\Aurora_Aurora_V2 Design\Aurora_V2 Design\Photometric Final Plan.dwg Layout1 May 10, 2024 11:30am by Kayla O'Sullivan
 This document, together with the concepts and designs presented herein, is intended only for the specific purpose and client for which it was prepared. Reuse of and improper reliance on this document without written authorization and adaptation by Kinney-Horn and Associates, Inc. shall be without liability to Kinney-Horn and Associates, Inc.

<p>PHOTOMETRICS PREPARED BY KW MISSION CRITICAL ENGINEERING</p>	<p>SCALE: AS NOTED DESIGNED BY: TRE DRAWN BY: TRW CHECKED BY: JWP</p>
	
<p>FINAL PLAN FOR LOTS 1, 2, 3, 4, & 5 OF THE BUTTERFIELD SUBDIVISION PHASE II UNIT 5B</p>	
<p>CYRUSONE AURORA 2725 BILTER RD AURORA, IL 60502 OWNER: CYRUSONE 2850 N HARWOOD ST., STE 2200 DALLAS, TX 75201</p>	
<p>ORIGINAL ISSUE: 05/10/2024 KHA PROJECT NO. 268485001</p>	
<p>SHEET NUMBER EX</p>	