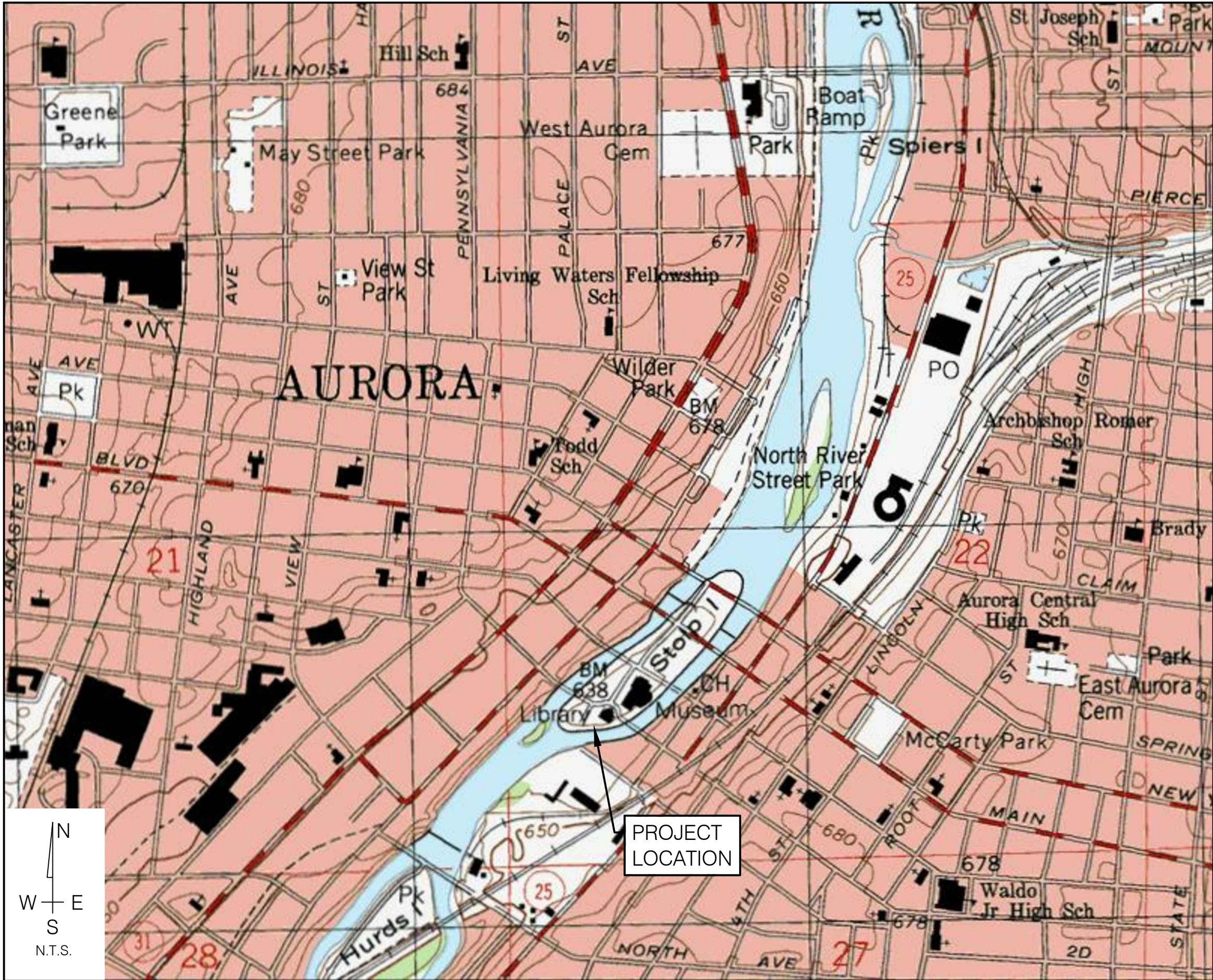


SITE IMPROVEMENT PLANS FOR CITY OF AURORA PARKING LOT D MAINTENANCE

AURORA, ILLINOIS
WBK PROJECT NO. 160168

LOCATION MAP



PLAN LEGEND

EXISTING	LINETYPES	PROPOSED
	DRAIN TILE	
	STORM SEWER	
	SANITARY SEWER	
	WATER MAIN (W/ SIZE)	
	PIPE TRENCH BACKFILL	
	GAS MAIN	
	TELEPHONE LINES	
	ELECTRIC LINE	
	FENCE	
	RIGHT-OF-WAY	
	EASEMENT	
	PROPERTY LINE	
	SETBACK LINE	
	CENTERLINE	
	CONTOUR	
	GUARDRAIL	
	SANITARY MANHOLE	
	STORM MANHOLE	
	CATCH BASIN	
	INLET	
	SUMP STRUCTURE	
	FIRE HYDRANT	
	PRESSURE CONNECTION	
	VALVE & VAULT, VALVE	
	FLARED END SECTION	
	STREET LIGHT	
	UTILITY POLE	
	CONTROL POINT	
	SIGN	
	SPOT ELEVATION	
	OVERLAND FLOW ROUTE	
	DRAINAGE SLOPE	
	TREE, EVERGREEN, SHRUB & PROPOSED TREE TO REMOVE	

SHEET INDEX

#	TITLE	DESCRIPTION
1	CV	COVER SHEET
2	GN	GENERAL NOTES
3	SOQ	SUMMARY OF QUANTITIES
4	SP1	SITE PLAN

REVISIONS

#	SHEET #	DESCRIPTION	DATE
ORIGINAL PLAN DATE: 04/29/16			
#1	3,4	ADDENDUM #1	5-24-16
#2	3,4	ADDENDUM #2	6-1-16

PERMITS

AGENCY	DATE	PERMIT #

CLIENT

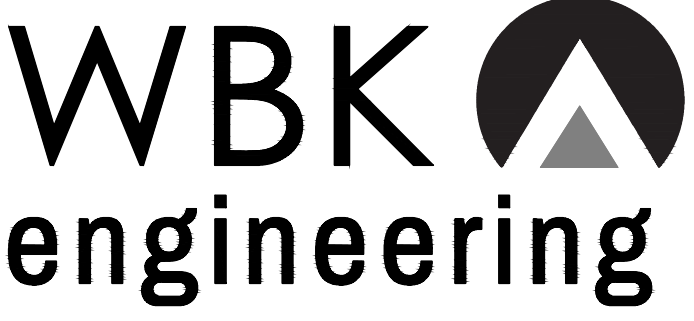
CITY OF AURORA
44 EAST DOWNER PLACE
AURORA, IL 60505
630-256-3650

CIVIL ENGINEER

Kristine E. Meyer
ENGINEER 5/5/16 DATE
KRISTINE E. MEYER, P.E.
ILLINOIS REGISTRATION NO.: 062-060877
EXPIRATION DATE: 11/30/2017
THESE PLANS OR ANY PART THEREOF SHALL BE CONSIDERED VOID WITHOUT THE SIGNATURE, SEAL, AND EXPIRATION DATE OF SEAL OF THE ENGINEER



CALL J.U.L.I.E. 1-800-892-0123
48 HOURS BEFORE YOU DIG
CITY OF GENEVA, KANE COUNTY
SW 1/4 SECTION 22, T38N, R8E

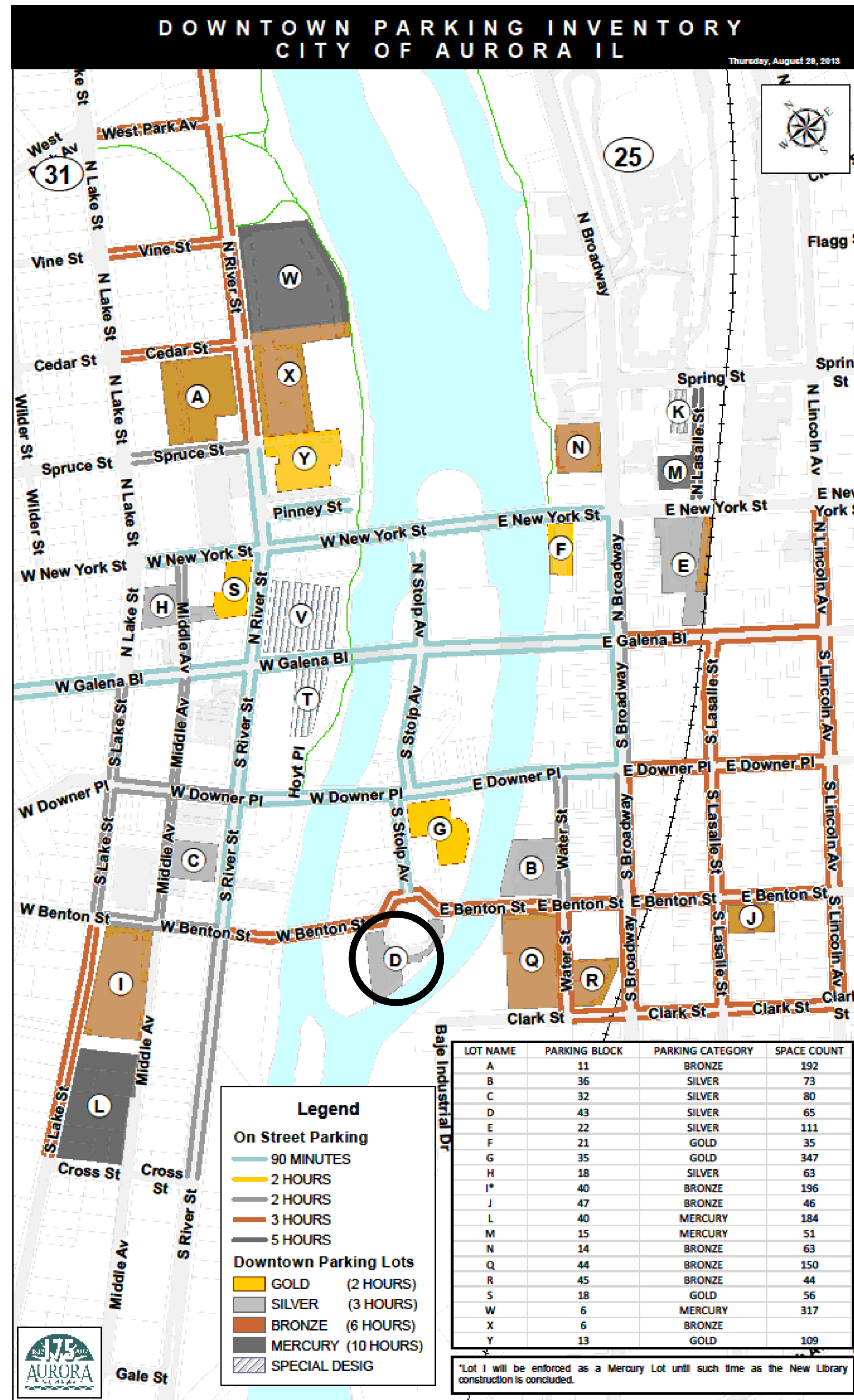


WBK ENGINEERING, LLC
8 EAST GALENA BOULEVARD, SUITE 402, AURORA, ILLINOIS 60506
P: 630.701.2245 F: 630.800.1626 WWW.WBKENGINEERING.COM

PROFESSIONAL DESIGN FIRM NO. 184.007317
EXPIRATION DATE: 04/30/2017

UPDATED: 6/20/16 - J.E.S.T.
 W:\Projects\160168\160168-CityOfAurora\Drawings\Site\160168.dwg, CV: 6/20/16, 1:56:47 PM, pset

- ALL CONSTRUCTION SHALL BE IN CONFORMANCE WITH THE APPLICABLE REQUIREMENTS SET FORTH IN "THE CONSTRUCTION SPECIFICATIONS FOR ROAD AND BRIDGE CONSTRUCTION" ADOPTED APRIL 1, 2016 (HEREINAFTER REFERRED TO AS THE STANDARD SPECIFICATIONS); THE LATEST EDITION OF THE ILLINOIS MANUAL ON UNIFORM TRAFFIC CONTROL DEVICES FOR STREETS AND HIGHWAYS" IN EFFECT ON THE DATE OF INVITATION FOR BIDS; THE "STANDARD SPECIFICATIONS FOR TRAFFIC CONTROL ITEMS", LATEST EDITION; THE "SUPPLEMENTAL SPECIFICATIONS AND RECURRING SPECIAL PROVISIONS" ADOPTED APRIL 1, 2016; THE "ILLINOIS URBAN MANUAL", LATEST EDITION; THE AMERICANS WITH DISABILITIES ACT AND THE ILLINOIS ACCESSIBILITY CODE; ALL CODES AND ORDINANCES OF KANE COUNTY AND THE CITY OF AURORA; SPECIAL PROVISIONS AS INCLUDED THE CONTRACT DOCUMENTS; AND THE DETAILS AND STANDARDS CONTAINED IN THESE PLANS. INCIDENTAL ITEMS OR ACCESSORIES NECESSARY FOR COMPLIANCE WITH THESE REQUIREMENTS SHALL BE CONSIDERED INCIDENTAL TO THE CONTRACT.
- ANY REFERENCE TO STANDARDS WITHIN THESE PLANS OR SPECIAL PROVISIONS SHALL BE INTERPRETED TO MEAN THE CURRENT STANDARDS OF THE ILLINOIS DEPARTMENT OF TRANSPORTATION AS SHOWN ON THE COVER SHEET.
- THE CONTRACTOR IS SOLELY RESPONSIBLE FOR SAFETY ON THE JOB.
- THE CONTRACTOR, AT HIS EXPENSE, SHALL RELOCATE OR REMOVE AND REPLACE ANY EXISTING SIGNS WHICH INTERFERE WITH CONSTRUCTION. THIS WORK SHALL MEET THE FOLLOWING REQUIREMENTS:
 - SIGNS SHALL NOT BE MOVED UNTIL NECESSITATED BY PROGRESS OF THE WORK.
 - REMOVED TRAFFIC CONTROL SIGNS MUST BE RESET AT TEMPORARY LOCATIONS VISIBLE TO TRAFFIC ON THE STREET. SIGNS MUST BE MAINTAINED FOR THE DURATION OF THE TEMPORARY SETTING.
 - SIGNS SHALL BE REINSTALLED AT PERMANENT LOCATIONS WHEN PROGRESS OF THE WORK MAKES PERMANENT INSTALLATION POSSIBLE.
- LOCATION OF THE UNDERGROUND UTILITIES SHOWN ON THESE PLANS IS BASED ON THE BEST INFORMATION AVAILABLE. BEFORE STARTING ANY EXCAVATIONS, THE CONTRACTOR SHALL CALL "JULIE" AT 1-800-892-0123 FOR FIELD LOCATIONS OF BURIED ELECTRIC, TELEPHONE AND GAS FACILITIES (48 HOUR NOTIFICATION IS REQUIRED). THE CONTRACTOR SHALL ARRANGE FOR THE ADJUSTMENTS OR MOVING OF UTILITIES WHICH WILL CONFLICT WITH THE CONSTRUCTION OF THE PROPOSED IMPROVEMENT PRIOR TO COMMENCING CONSTRUCTION OPERATIONS. THE CONTRACTOR SHALL COOPERATE WITH ALL UTILITY OWNERS AS PROVIDED FOR IN THE STANDARD SPECIFICATIONS.
- THE CONTRACTOR SHALL BE RESPONSIBLE FOR THE PROTECTION OF ALL UNDERGROUND OR SURFACE UTILITIES, WHETHER OR NOT THEY ARE SHOWN ON THE PLANS. IF EXISTING UTILITY LINES OF ANY NATURE ARE ENCOUNTERED WHICH CONFLICT WITH THE PROPOSED IMPROVEMENTS, THE CONTRACTOR SHALL IMMEDIATELY NOTIFY THE ENGINEER. ANY UTILITY THAT IS DAMAGED DURING CONSTRUCTION SHALL BE REPAIRED TO THE SATISFACTION OF THE ENGINEER AND THE UTILITY OWNER. THE CONTRACTOR SHALL BE RESPONSIBLE FOR ALL EXPENSES INCURRED IN THE REPAIR OF DAMAGED UTILITY APPURTENANCES.
- SPECIAL CARE SHALL BE TAKEN IN EXCAVATING AND GRADING NEAR UTILITIES AND TREES IN ORDER TO AVOID UNNECESSARY DAMAGE.
- TREES, SHRUBS, BUSHES AND EVERGREENS LOCATED OUTSIDE OF THE CONSTRUCTION LIMITS ARE TO BE PRESERVED AND PROTECTED AS PROVIDED IN SECTION 201.05 OF THE STANDARD SPECIFICATIONS BY THE CONTRACTOR. THIS WORK SHALL BE CONSIDERED INCIDENTAL TO THE CONTRACT.
- THE CONTRACTOR SHALL COOPERATE WITH THE CITY OF AURORA SHOULD THEY WISH TO PLACE OR REPAIR ANY UNDERGROUND UTILITIES PRIOR TO OR DURING THE COURSE OF CONSTRUCTION.
- WHENEVER DURING CONSTRUCTION OPERATIONS ANY LOOSE MATERIAL IS DEPOSITED IN THE FLOW LINE OF DRAINAGE STRUCTURES, TEMPORARY DITCHES OR GUTTERS SO THAT THE NATURAL FLOW OF WATER IS OBSTRUCTED, IT SHALL BE REMOVED AT THE CLOSE OF EACH WORKING DAY. AT THE CONCLUSION OF THE CONSTRUCTION OPERATIONS, ALL DRAINAGE STRUCTURES SHALL BE CLEANED AS NECESSARY TO INSURE THAT THEY ARE FREE FROM ALL DIRT AND DEBRIS PRIOR TO THE FINAL INSPECTION OF THE PROJECT. THIS WORK WILL NOT BE PAID FOR SEPARATELY, BUT SHALL BE CONSIDERED INCIDENTAL TO THE CONTRACT.
- REMOVAL OF EXCAVATED MATERIAL AND CLEAN CONSTRUCTION OR DEMOLITION DEBRIS: THE CONTRACTOR SHALL BE RESPONSIBLE FOR THE LAWFUL REMOVAL OF ALL EXCAVATED SOIL, MATERIAL AND OTHER CLEAN CONSTRUCTION OR DEMOLITION DEBRIS IN COMPLIANCE WITH PUBLIC ACT 96-1416. ALL COSTS FOR REMOVAL, HAULING, DISPOSING AND DOCUMENTATION OF ASPHALT, CONCRETE, STONE, SOIL, ANY COMBINATION THEREOF OR ANY OTHER EXCAVATED MATERIAL SHALL BE INCLUDED IN THE COST OF EACH PAY ITEM AND WILL NOT BE PAID FOR SEPARATELY OR AS AN ADDITIONAL ITEM. ANY COSTS INCLUDING BUT NOT LIMITED TO HAULING, TIPPING FEE, CHARGES, DOCUMENTATION, TESTING, OR CERTIFICATIONS RELATED TO COMPLIANCE WITH PUBLIC ACT 96-1416 IS INCIDENTAL TO EACH PAY ITEM WHERE REMOVAL IS SPECIFIED. THE CONTRACTOR SHALL NOT RELY ON THE CITY OF AURORA TO PROVIDE SOURCE SITE CERTIFICATION FOR REMOVAL OF ANY MATERIALS.
- PRIOR TO COMMENCEMENT OF CONSTRUCTION THE CONTRACTOR SHALL VERIFY ALL DIMENSIONS AND CONDITIONS AFFECTING THE WORK WITH THE ACTUAL DIMENSIONS AND CONDITIONS AT THE JOB SITE. IN ADDITION, THE CONTRACTOR MUST VERIFY THE ENGINEER'S LINE AND GRADE STAKES. IF THERE ARE ANY DISCREPANCIES WITH WHAT IS SHOWN ON THE CONSTRUCTION PLANS, THE CONTRACTOR MUST IMMEDIATELY REPORT THE DISCREPANCY TO THE ENGINEER BEFORE DOING ANY WORK, OTHERWISE THE CONTRACTOR ASSUMES FULL RESPONSIBILITY. IN THE EVENT OF DISAGREEMENT BETWEEN THE CONSTRUCTION PLANS, SPECIFICATIONS, AND/OR SPECIAL DETAILS, THE CONTRACTOR SHALL SECURE WRITTEN INSTRUCTION FROM THE ENGINEER PRIOR TO PROCEEDING WITH ANY PART OF THE WORK AFFECTED BY OMISSIONS OR DISCREPANCIES. FAILING TO SECURE SUCH INSTRUCTION, THE CONTRACTOR WILL BE CONSIDERED TO HAVE PROCEEDED AT HIS OWN RISK AND EXPENSE. IN THE EVENT OF ANY DOUBT OR QUESTIONS ARISING WITH RESPECT TO THE TRUE MEANING OF CONSTRUCTION PLANS OR SPECIFICATIONS, THE DECISION OF THE ENGINEER SHALL BE FINAL AND CONCLUSIVE.
- CONSTRUCTION LAYOUT SHALL BE CONSIDERED INCIDENTAL TO THE CONTRACT AND NO ADDITIONAL COMPENSATION SHALL BE ALLOWED.
- THE CONTRACTOR SHALL, AS NECESSARY, NOTIFY ALL TESTING AGENCIES AS CONTRACTED BY THE CITY OF AURORA SUFFICIENTLY IN ADVANCE OF CONSTRUCTION, FAILURE TO ALLOW PROPER NOTIFICATION TIME WHICH RESULTS IN TESTING AGENCIES BEING UNABLE TO VISIT SITE WILL RESULT IN THE CONTRACTOR SUSPENDING OPERATIONS (PERTAINING TO TESTING) UNTIL TESTING OPERATIONS CAN BE COMPLETED. COST OF SUSPENSION OF WORK TO BE BORNE BY CONTRACTOR.
- THE CONTRACTOR SHALL PRESERVE ALL CONSTRUCTION STAKES UNTIL THEY ARE NO LONGER NEEDED. ANY STAKES DESTROYED OR DISTURBED BY THE CONTRACTOR PRIOR TO THEIR USE SHALL BE RESET BY THE ENGINEER AT THE CONTRACTOR'S EXPENSE.
- EXISTING DRAINAGE STRUCTURES AND SYSTEMS SHALL BE CLEANED OF DEBRIS AND PATCHED AS NECESSARY TO ASSURE INTEGRITY OF THE STRUCTURE, WHERE SHOWN ON THE PLANS OR DIRECTED BY THE ENGINEER.
- AT THE CLOSE OF EACH WORKING DAY AND AT THE CONCLUSION OF CONSTRUCTION OPERATIONS, ALL DRAINAGE STRUCTURES AND FLOW LINES SHALL BE FREE FROM DIRT AND DEBRIS.
- PAVING WORK SHALL INCLUDE SUBGRADE SHAPING, PREPARATION AND COMPACTION; PLACEMENT OF SUB-BASE OR BASE COURSE MATERIALS, BITUMINOUS BINDER AND/OR SURFACE COURSES; AND FINAL CLEAN-UP AND ALL RELATED WORK.
- PAVING COMPACTION REQUIREMENTS SHALL BE IN ACCORDANCE WITH THE STANDARD SPECIFICATIONS.
- IT SHALL BE THE CONTRACTOR'S RESPONSIBILITY TO PROVIDE PROPER BARRICADING, WARNING DEVICES AND THE SAFE MANAGEMENT OF TRAFFIC WITHIN THE CONSTRUCTION AREA.
- PRIOR TO THE PLACEMENT OF PAVING MATERIALS, THE SUBGRADE MUST BE PROOF ROLLED AND INSPECTED FOR UNSUITABLE MATERIALS AND/OR EXCESSIVE MOVEMENT. IF UNSUITABLE SUBGRADE MATERIALS ARE ENCOUNTERED, IT SHALL BE CORRECTED IN A MANNER APPROVED BY THE OWNER OR ENGINEER. THE SUBGRADE MUST BE REPEATEDLY PROOF ROLLED UNTIL THE RESULTING SUBGRADE IS SATISFACTORY TO THE OWNER OR ENGINEER.
- UNSUITABLE MATERIAL SHALL BE CONSIDERED AS MATERIAL WHICH IS NOT SUITABLE FOR THE SUPPORT OF PAVEMENT CONSTRUCTION, AND IS ENCOUNTERED BELOW NORMAL TOPSOIL DEPTHS AND THE PROPOSED SUBGRADE ELEVATION. THE DECISION TO REMOVE SAID MATERIAL, AND TO WHAT EXTENT, SHALL BE MADE BY A SOILS ENGINEER WITH THE CONCURRENCE OF THE OWNER OR ENGINEER.
- INDEMNIFICATION
 - HOLD HARMLESS: THE CONTRACTOR, AS A CONDITION OF THE CONTRACT, HEREBY AGREES TO ASSUME THE ENTIRE RESPONSIBILITY AND LIABILITY FOR, AND DEFENSE OF, AND TO PAY AND INDEMNIFY AND HOLD THE ENGINEER, THE CITY OF AURORA, THEIR ENGINEERS, AGENTS AND EMPLOYEES HARMLESS FROM ALL CLAIMS FOR DAMAGES OR INJURY (OR DEATH RESULTING THEREFROM) TO ANY AND ALL PERSONS, INCLUDING EMPLOYEES OR AGENTS OR ANY PERSON OR FIRM ENGAGES IN WORK UPON THE PROJECT, ARISING OUT OF THE CONDUCT OF THE CONTRACTOR ARISING OUT OF THE PERFORMANCE OF THIS AGREEMENT OR ANY WORK RELEVANT THERETO, OR ARISING OUT OF ANY OF ANY FEDERAL, STATE OR LOCAL STATUTE, RULE, REGULATION OR ORDINANCE, INCLUDING BUT NOT LIMITED TO THE PROVISIONS OF THE OCCUPATIONAL SAFETY AND HEALTH STANDARDS ACT (OSHA).
 - ALL COSTS, FEES AND EXPENSES, INCLUDING, BY WAY OF EXAMPLE AND WITHOUT LIMITATION, REASONABLE ATTORNEY'S FEES, COURT COSTS, COURT REPORTER'S FEES, TRANSCRIPT COSTS, SUBPOENA FEES AND COSTS, WITNESS FEES, SERVICE COSTS, AND DOCUMENT REPRODUCTION COSTS INCURRED BY THE COUNTY AS A RESULT OF ANY CLAIMS FOR DAMAGE OR INJURY AS ENUMERATED ABOVE SHALL BE PAID BY THE CONTRACTOR.
 - THE CONTRACTOR(S) SHALL NAME WBK ENGINEERING, LLC. (WBK), AND THE CITY OF AURORA NAMED INSURED ON ALL LIABILITY INSURANCE POLICIES AND SHALL PROVIDE THE CITY OF AURORA AND WBK WITH CERTIFICATES OF INSURANCE PRIOR TO COMMENCEMENT OF ANY WORK.



CITY OF AURORA PARKING LOT D MAINTENANCE

JSE	AJR	JCL
DSGN.	DWN.	CHKD.
SCALE: 1"=100'		
GN160168.DWG		

CITY OF AURORA
44 EAST DOWNER PLACE
AURORA, IL 60505
630-256-3650

WBK ENGINEERING, LLC
116 WEST MAIN STREET, SUITE 201
ST. CHARLES, ILLINOIS 60174
(630) 443-7755

PROJECT NO. 160168
DATE : 04/29/16
DRAWING NO. GN
SHEET:

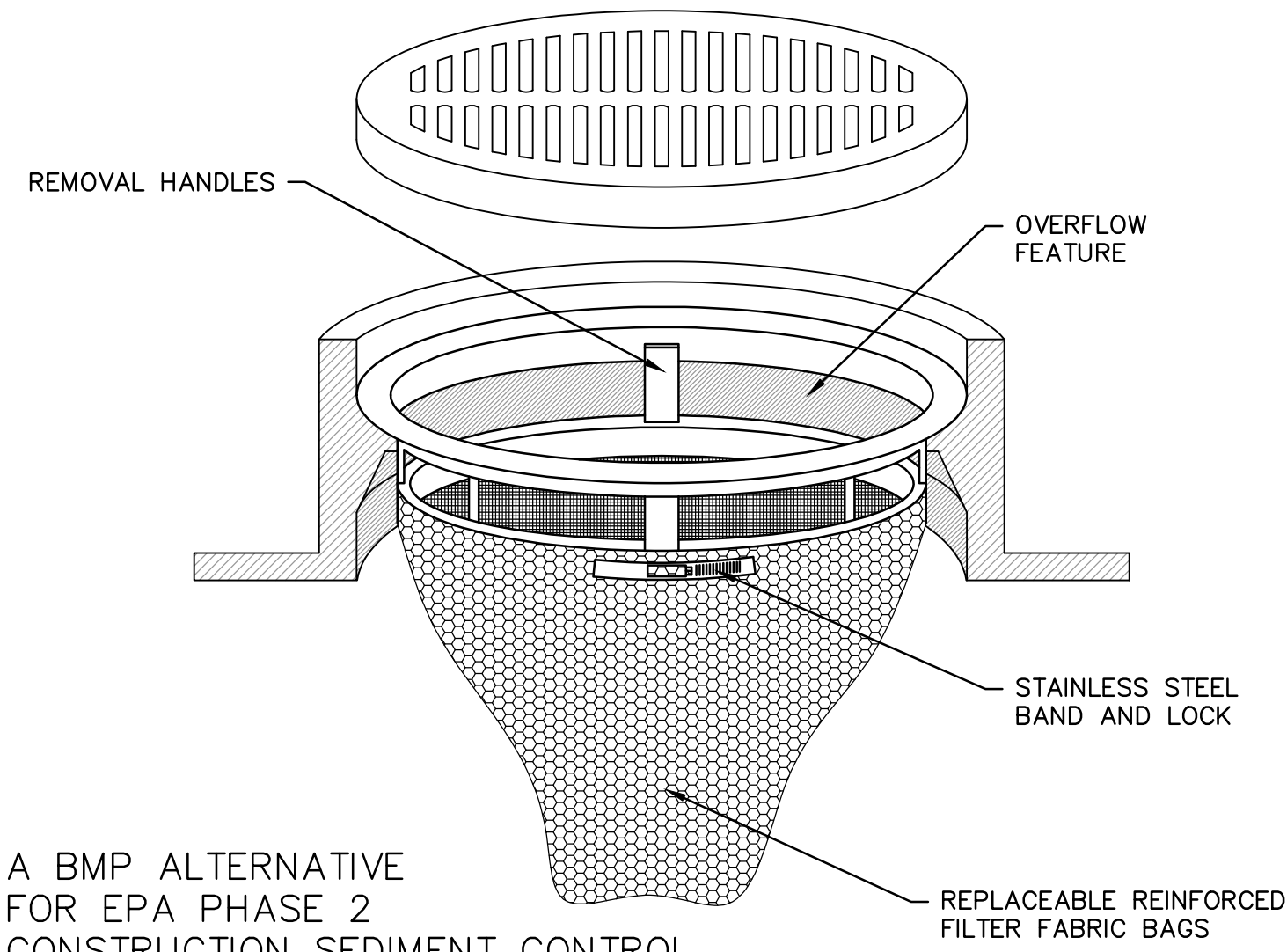
2 OF 4

UPDATED: 8/29/16 - JEST
 W:\Projects\160168\160168-COMPLETE\160168-01\160168-01.dwg, GN, 8/29/16 1:56:55 PM, jrest

LOT D			
1	REMOVAL AND DISPOSAL OF UNSUITABLE MATERIAL (20% OF REMOVAL AREA)	CU YD	224
2	INLET FILTERS	EACH	8 #2
3	AGGREGATE BASE COURSE, TYPE A	CU YD	74
4	BITUMINOUS MATERIALS (PRIME COAT)	GALLON	1,667
5	HOT-MIX ASPHALT SURFACE COURSE, MIX "D", N50, 1 1/2"	TON	316 #2
6	THERMOPLASTIC PAVEMENT MARKING-LETTERS & SYMBOLS	SQ FT	46
7	THERMOPLASTIC PAVEMENT MARKING-LINE 4"	FOOT	1,572
8	SAW CUTTING (FULL DEPTH)	FOOT	84
9	HOT-MIX ASPHALT REPLACEMENT OVER PATCHES	TON	112
10	HOT-MIX ASPHALT SURFACE REMOVAL, 1 1/2"	SQ YD	3,555 #2
11	SIDEWALK REMOVAL	SQ FT	165
12	HOT-MIX ASPHALT REMOVAL OVER PATCHES, 3" (10% OF REMOVAL AREA/UNDER PCC PAD)	SQ YD	716
13	CURB REMOVAL	FOOT	252
14	BARRIER CURB, TYPE B	FOOT	308
15	SUB-BASE GRANULAR MATERIAL, TYPE C	CU YD	150
16	MOBILIZATION	L SUM	1
17	4" PCC PAD ON 5" AGGREGATE	SQ FT	270
18	RESTORATION (INCLUDING TOPSOIL, SEED AND BLANKET)	SQ FT	385
19	CURB AND GUTTER REMOVAL AND REPLACEMENT, B6.12 (SPECIAL)	FOOT	280
20	SIDEWALK REMOVAL AND REPLACEMENT, 6" (SPECIAL)	SQ FT	3,250
21	EXISTING HANDHOLES TO BE ADJUSTED	EACH	2
22	CATCH BASINS TO BE ADJUSTED	EACH	3 #2
23	MANHOLE TO BE ADJUSTED WITH NEW FRAME AND LID	EACH	1
24	FILL EXISTING VAULT, FLOWABLE FILL MATERIAL	CU YD	24
25	2" GALVANIZED STEEL CONDUIT (FOR STREET LIGHTING REPAIR AS NEEDED)	FOOT	200
26	QUAZITE ELECTRICAL ENCLOSURE 12" X 18"	EACH	3

CATCH-ALL INLET PROTECTOR

FOR ROUND, RECTANGULAR, BEEHIVE, OR ROLL CURB INLET CASTINGS



A BMP ALTERNATIVE
FOR EPA PHASE 2
CONSTRUCTION SEDIMENT CONTROL

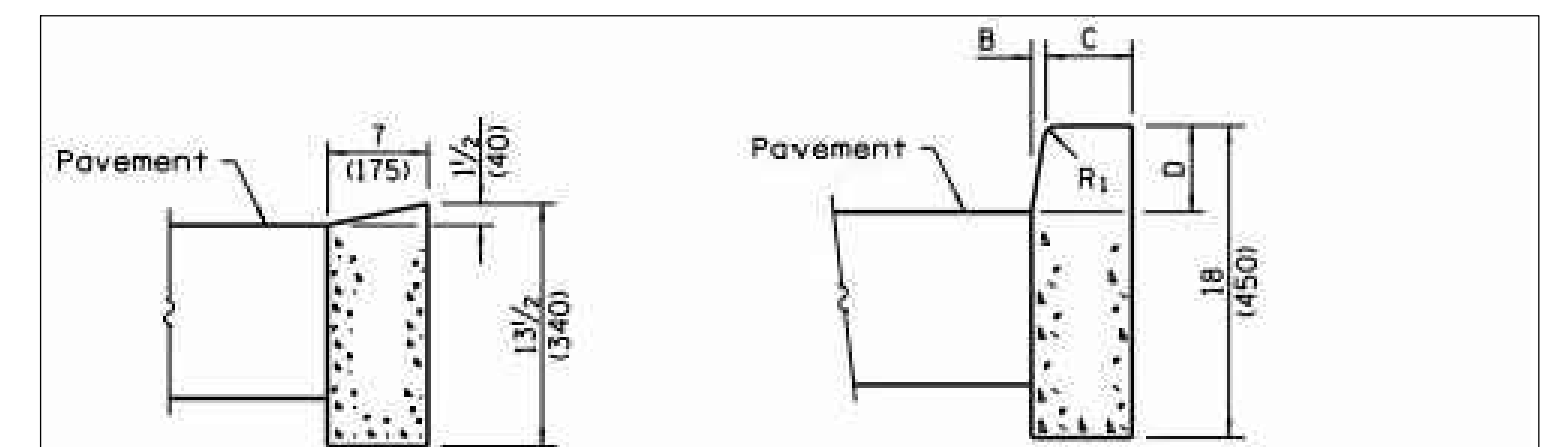
INSTALLED COMPLETELY BELOW GRADE

FROM...
MARATHON MATERIALS, INC.
25523 W. SCHULTZ STREET
PLAINFIELD, IL 60544
(800) 983-9493
WWW.MARATHONMATERIALS.COM

BARRIER CURB						MOUNTABLE CURB						
TABLE OF DIMENSIONS BARRIER CURB						TABLE OF DIMENSIONS MOUNTABLE CURB						
TYPE	A	B	C	D	R ₁	TYPE	A	B	C	D	R ₁	R ₂
B-6.06 *	6	1	6	6	1	M-2.06	6	2	4	2	3	2
(B-15.15)	(150)	(25)	(150)	(150)	(25)	(M-5.15)	(150)	(50)	(100)	(50)	(75)	(50)
B-6.12	12	1	6	6	1	M-2.12	12	2	4	2	3	2
(B-15.3)	(300)	(25)	(150)	(150)	(25)	(M-5.30)	(300)	(50)	(100)	(50)	(75)	(50)
B-6.18	18	1	6	6	1	M-4.06	6	4	3	4	3	NA
(B-15.45)	(450)	(25)	(150)	(150)	(25)	(M-10.15)	(150)	(100)	(75)	(100)	(75)	NA
B-6.24	24	1	6	6	1	M-4.12	12	4	3	4	3	NA
(B-15.60)	(600)	(25)	(150)	(150)	(25)	(M-10.30)	(300)	(100)	(75)	(100)	(75)	NA
B-9.12	12	2	5	9	1	M-4.18	18	4	3	4	3	NA
(B-22.30)	(300)	(50)	(125)	(225)	(25)	(M-10.45)	(450)	(100)	(75)	(100)	(75)	NA
B-9.18	18	2	5	9	1	M-4.24	24	4	3	4	3	NA
(B-22.45)	(450)	(50)	(125)	(225)	(25)	(M-10.60)	(600)	(100)	(75)	(100)	(75)	NA
B-9.24	24	2	5	9	1	M-6.06	6	6	2	6	2	NA
(B-22.60)	(600)	(50)	(125)	(225)	(25)	(M-15.15)	(150)	(150)	(50)	(150)	(50)	NA
						M-6.12	12	6	2	6	2	NA
						(M-15.30)	(300)	(150)	(50)	(150)	(50)	NA
						M-6.18	18	6	2	6	2	NA
						(M-15.45)	(450)	(150)	(50)	(150)	(50)	NA
						M-6.24	24	6	2	6	2	NA
						(M-15.60)	(600)	(150)	(50)	(150)	(50)	NA

* For corner islands only.

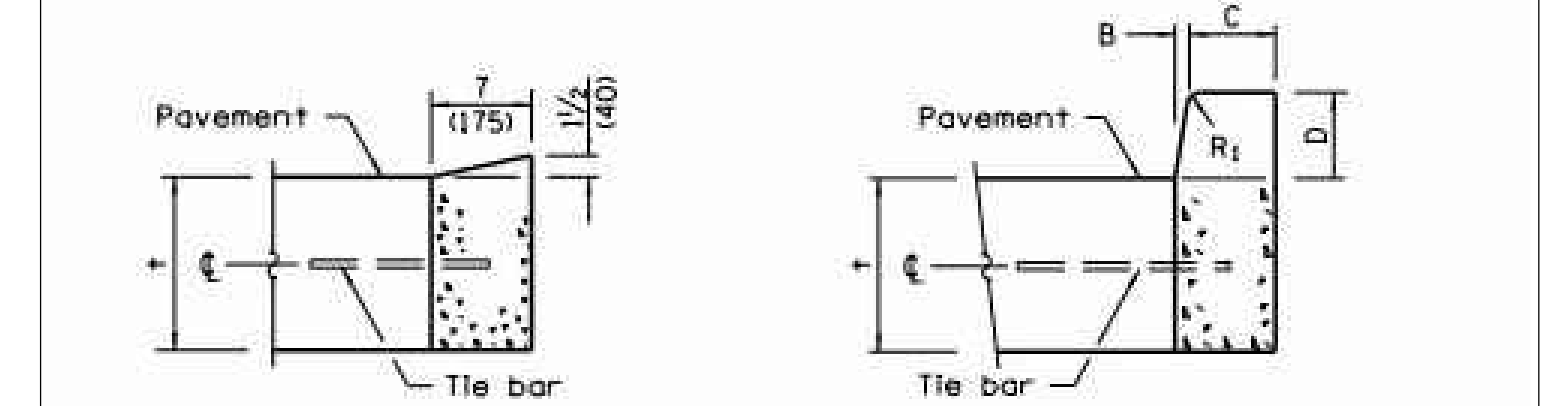
Illinois Department of Transportation
 PASSED: January 1, 2015
 ENGINEER OF POLICY AND PROCEDURES
 APPROVED: January 1, 2015
 ENGINEER OF DESIGN AND ENVIRONMENT



DEPRESSED CURB

BARRIER CURB

ADJACENT TO FLEXIBLE PAVEMENT



DEPRESSED CURB

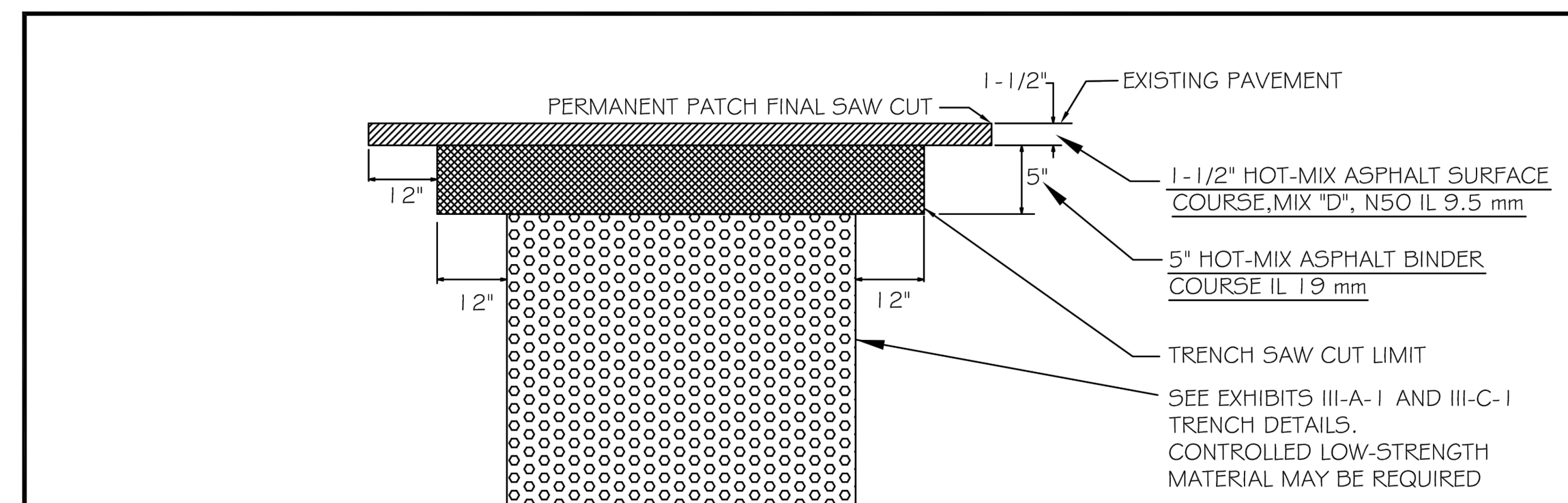
BARRIER CURB

ADJACENT TO PCC PAVEMENT OR PCC BASE COURSE

CONCRETE CURB TYPE B

**CONCRETE CURB TYPE B
AND COMBINATION
CONCRETE CURB AND GUTTER**
(Sheet 2 of 2)

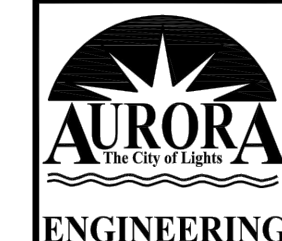
STANDARD 606001-06



NOTES :

- A STEEL PLATE SHALL BE PLACED OVER ANY TRENCH REMAINING OPEN TO TRAFFIC PRIOR TO THE INSTALLATION OF THE HOT-MIX BINDER AND SURFACE COURSES.
- THE ENTIRE STREET FROM CURB TO CURB OR JOINT TO JOINT SHALL BE RESURFACED UNLESS EXPRESSLY PERMITTED BY THE CITY ENGINEER OR HIS DESIGNEE. THE PERMANENT PATCH SHALL BE MILLED SQUARE OR RECTANGULAR AND SHALL ENCOMPASS THE TRENCH AREA WITH A MINIMUM OF 12" INCHES BEYOND THE WIDEST OR LONGEST SAW CUT LIMITS OF THE TRENCH.
- THE EDGES OF THE EXISTING PAVEMENT SHALL BE SAW CUT AND PRIMED PRIOR TO THE PLACEMENT OF THE SURFACE COURSE.
- ANY SURFACE VARIATIONS 1/4" OR GREATER SHALL BE CORRECTED BY REMOVAL AND REPLACEMENT.
- THE CONTRACTOR SHALL BE RESPONSIBLE FOR TRAFFIC CONTROL IN ACCORDANCE WITH ILLINOIS DEPARTMENT OF TRANSPORTATION SPECIFICATIONS.
- ALL MATERIAL SHALL MEET CURRENT ILLINOIS DEPARTMENT OF TRANSPORTATION STANDARD SPECIFICATIONS FOR ROAD AND BRIDGE CONSTRUCTION.

REVISIONS		MINOR COLLECTOR AND LOCAL RESIDENTIAL PERMANENT PATCH DETAIL	
DATE:	02-01-13	BY:	DG
SCALE:	NOT TO SCALE	CHECKED:	DF
DATE:	1/04	DRAWN:	NM
		DRAWING NUMBER: EXHIBIT II-C-2	



CITY OF AURORA PARKING
LOT D MAINTENANCE
SUMMARY OF QUANTITIES

DSGN.	JSE	AJR	JCL	SCALE: 1/8"	ADDENDUM #2	ADDENDUM #1	NATURE OF REVISION
					#2 6-1-16	#1 5-24-16	

CLIENT:
CITY OF AURORA
44 EAST DOWNER PLACE
AURORA, IL 60505
630-256-3650

WBK ENGINEERING, LLC
116 WEST MAIN STREET, SUITE 201
ST. CHARLES, ILLINOIS 60174
(630) 443-7735



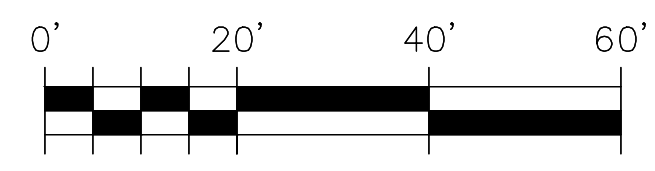
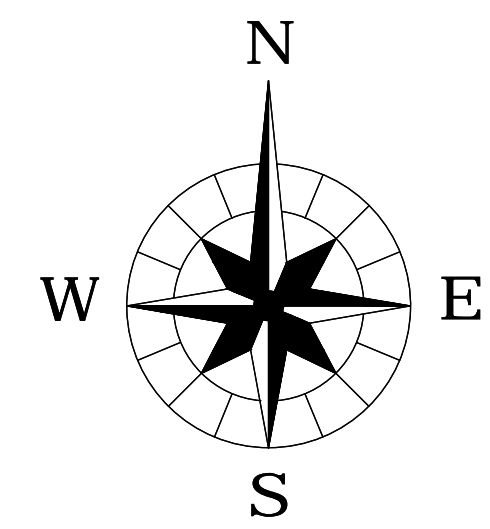
PROJECT NO.	160168
DATE:	04/29/16
DRAWING NO.	SOQ
SHEET:	

UPDATED: 6/29/16 - JLS/ST
W:\Projects\60160168\60160168-City of Aurora\60160168-SP1\60160168-SP1.dwg, SP1, 6/29/16 1:21:17 PM, plot



EX HMA SURFACE REMOVAL, 1 1/2"
PR HMA SURFACE COURSE,
MIX "D", N50, 1 1/2"
TOTAL AREA = 31,980 SF #2

1. REMOVAL- DISPOSAL OF UNSUITABLE MATERIAL SHALL BE REPLACED WITH 8" SUB-BASE COURSE GRANULAR MATERIAL, TYPE C AND CAPPED WITH 4" OF AGGREGATE BASE COURSE, TYPE A.
2. ESTIMATED QUANTITIES FOR "REMOVAL AND DISPOSAL OF UNSUITABLE MATERIAL," "SUB-BASE GRANULAR MATERIAL, TYPE "C", AND "AGGREGATE BASE COURSE, TYPE "A" HAVE BEEN PROVIDED TO ALLOW FOR THE REMOVAL AND REPLACEMENT OF ANY UNSUITABLE BASE COURSE MATERIALS THAT ARE ENCOUNTERED DURING CONSTRUCTION. QUANTITIES FOR "HOT-MIX ASPHALT REMOVAL OVER PATCHES" AND "HOT-MIX ASPHALT REPLACEMENT OVER PATCHES" HAVE ALSO BEEN PROVIDED TO ACCOUNT FOR THE REMOVAL AND REPLACEMENT OF THE FINAL 3" OF EXISTING ASPHALT ON TOP OF THE BASE COURSE.
3. CONTRACTOR TO MAINTAIN POSITIVE DRAINAGE TO EX CATCH BASINS ON THE SOUTH SIDE OF THE LOT.
4. CONTRACTOR IS TO ALLOW ACCESS TO SCI-TECH AT ALL TIMES AS NEEDED.
5. ALL CATCH BASINS LOCATED WHERE DEBRIS COULD ENTER THEM DURING CONSTRUCTION ARE TO BE PROTECTED WITH AN INLET FILTER.



CITY OF AURORA PARKING
LOT D MAINTENANCE
SITE PLAN

NO.	DATE	ADDENDUM #1	ADDENDUM #2	NATURE OF REVISION
#2	6-1-16			
#1	5-24-16			

CITY OF AURORA
44 EAST DOWNER PLACE
AURORA, IL 60505
630-256-3650

CLIENT :
WBK ENGINEERING, LLC
116 WEST MAIN STREET, SUITE 201
ST. CHARLES, ILLINOIS 60174
(630) 443-7755



PROJECT NO. 160168
DATE : 04/29/16
DRAWING NO. SP1
SHEET:
4 OF 4