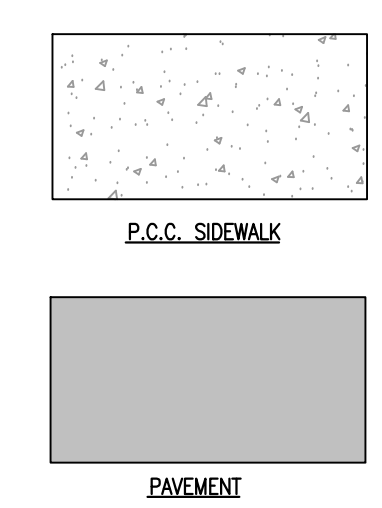
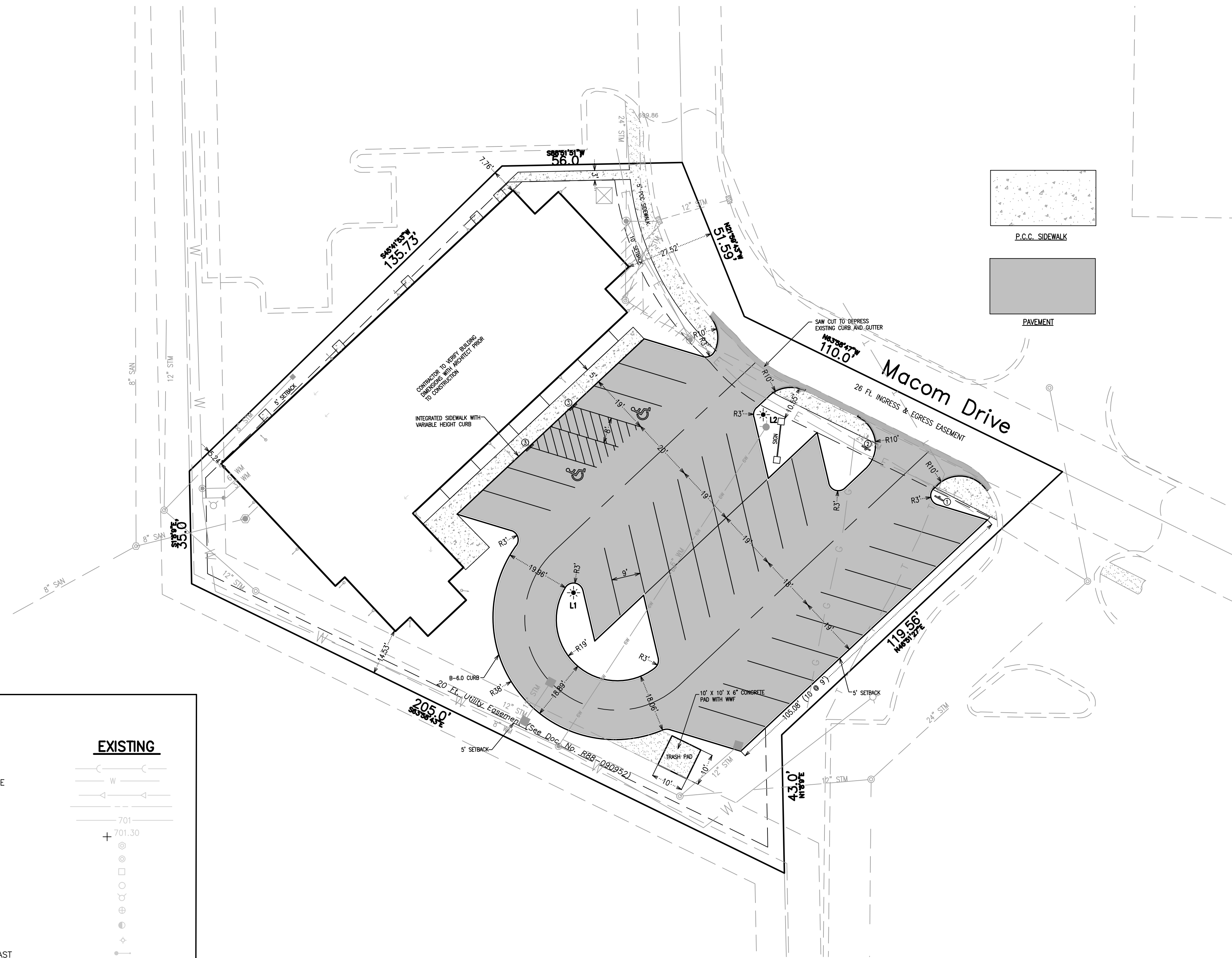
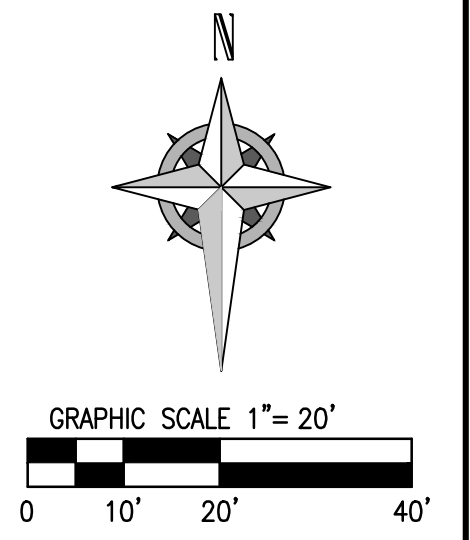


# FINAL PLAN FOR PSM WELLNESS CENTER

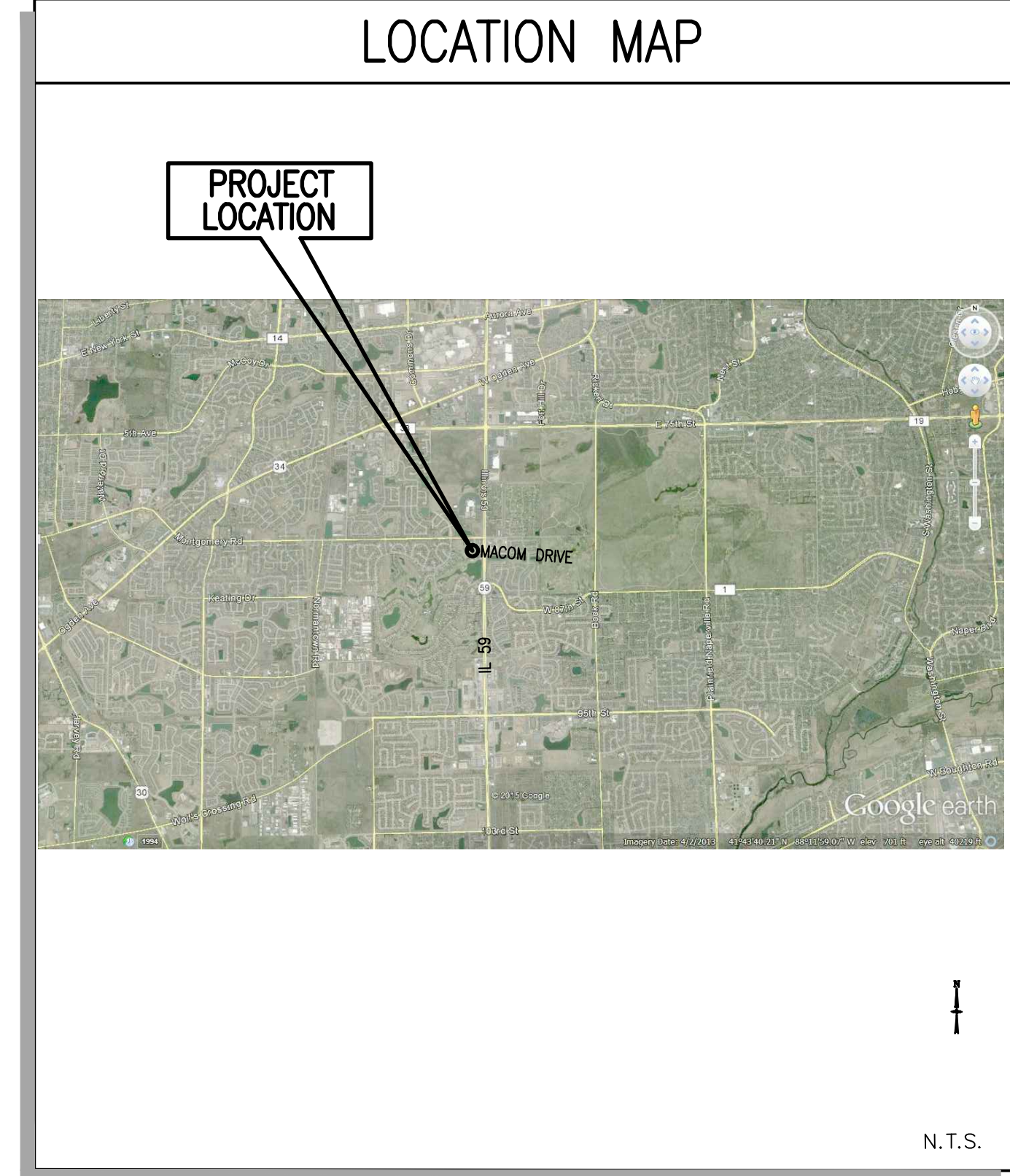


### FINAL PLAN FOR PSM WELLNESS CENTER

#### Development Data Table

Description	Value	Unit
Tax/Parcel Identification Number(s) (PINs): 07-33-400-041		
a) Total Property Size	0.733	Acres
	31,937	S.F.
b) Total Lot Coverage	23,305	S.F.
	73.0	Percent
(i) Buildings and pavement		
	19,773	S.F.
	61.91	Percent
(ii) Open Space/landscaping		
	8,632	S.F.
	27.0	Percent
c) Proposed Land Use(s)	Office Building	
d) Number of parking spaces provided:		
60° angle parking stalls	30	Spaces
Handicapped stalls	2	Spaces
e) Number of buildings	1	
(i) Number of stories		
	1	
(ii) Building square footage	7,584	S.F.
(iii) Gross Floor Area of comm. Use	7,584	S.F.

PROPOSED	LEGEND	EXISTING
DESCRIPTION		
	STORM SEWER	
	WATER MAIN WITH SIZE	
	SANITARY SEWER	
	RIGHT-OF-WAY	
	CONTOUR	
	SPOT GRADE	
	SANITARY MANHOLE	
	STORM MANHOLE	
	STORM INLET	
	STORM CATCH BASIN	
	FIRE HYDRANT	
	GATE VALVE W/BOX	
	GATE VALVE W/VAULT	
	STREET LIGHT	
	STREET LIGHT W/MAST	
	OVERFLOW DIRECTION	
	CURB OR CURB & GUTTER	
	SILT FENCE	
	EXISTING POWER POLE LIGHTED	
	ROAD SIGN	
	UNDERGROUND ELECTRIC	
	UNDERGROUND GAS	
	UTILITY POLE	
	DEPRESSED CURB FOR RAMP/DRIVEWAY	
	TOP OF FOUNDATION	
	TOP OF CURB, DEPRESSED	
	TOP OF RETAINING WALL	
	RIM FOR STRUCTURES	
	RISER FOR SANITARY SERVICE	
	HIGH/NORMAL WATER LEVEL	
	TRANSFORMER	



<b>VANTAGEPOINT</b> ENGINEERING	PETITIONER <b>FINAL PLAN FOR</b> PSM WELLNESS CENTER <b>PSM WELLNESS CENTER</b>	PRAMUKH CARE, LLC 3777 MONARCH CIRCLE NAPERVILLE, IL 60564	JUNE 16, 2015 JOB: 14-106 SHEET: <b>FP1</b>	REMARKS 07/08/15 REVISION PER CITY OF NAPELVA 08/10/15 REVISION PER CITY OF NAPELVA NO. DATE 1 07/08/15 2 08/10/15 T.708.478.4004 INFO@VPENG.COM WWW.VANTAGEPOINTENGINEERING.COM CONTACT: PRAMUKH CARE COPYRIGHT © 2015 VANTAGEPOINT ENGINEERING, LLC PROFESSIONAL DESIGN FIRM NO. 184-005786
------------------------------------	--	--	--	--