
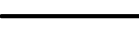
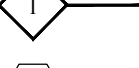
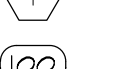


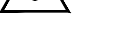


- FLOOR PLAN LEGEND:
-  EXISTING TO REMAIN
 -  NEW PARTITION
 -  WALL TYPE, SEE SHEET AX
 -  KEY NOTE
 -  DOOR NUMBER
 -  ROOM NUMBER
 -  WINDOW TAG

- PLAN NOTES:
- 1 NEW OMNIFLEX BY PORTAFAB FREE-STANDING WALL SYSTEM
 - 2 NEW 5" STUD WALL: 2x4 STUD W/ 5/8" GYP EA. SIDE
 - 3 EQUIPMENT AND FURNITURE BY TENANT. VERIFY ALL EQUIPMENT AND FURNITURE SPECS AND SIZES WITH TENANT.

**AURORA CHRISTIAN HEALTHCARE
INTERIOR BUILD-OUT**

351 S. 4th STREET, AURORA, IL 60505

BATIR
DESIGN AND CONSTRUCTION SOLUTIONS

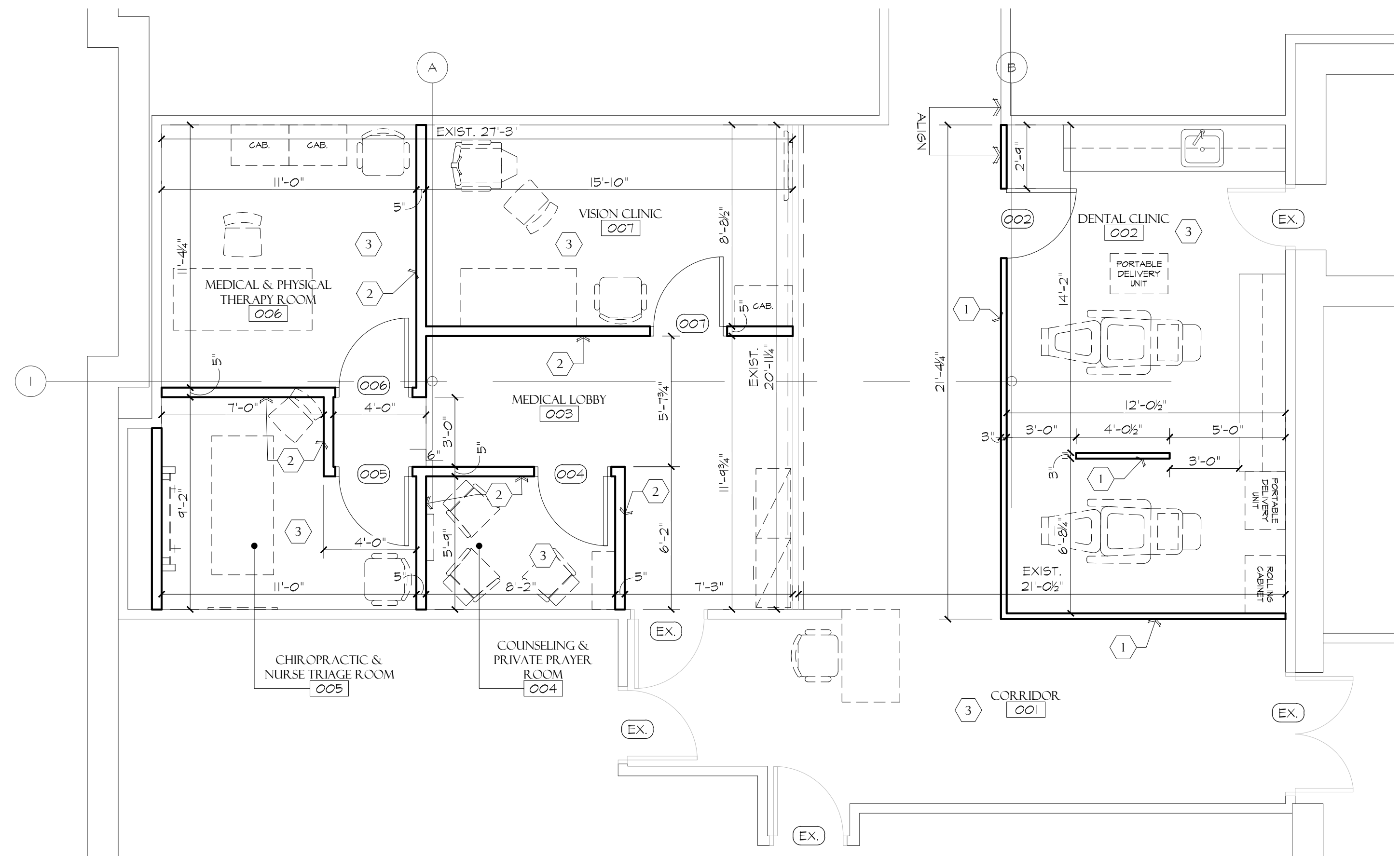
BATIR ARCHITECTURE, LTD.
1121 E. MAIN ST. SUITE 220, ST. CHARLES, IL 60174
PHONE: 630-513-5109 FAX: 630-513-5919
WWW.BATIRARCH.COM

**FLOOR PLAN, REFLECTED
CEILING PLAN, & NOTES**

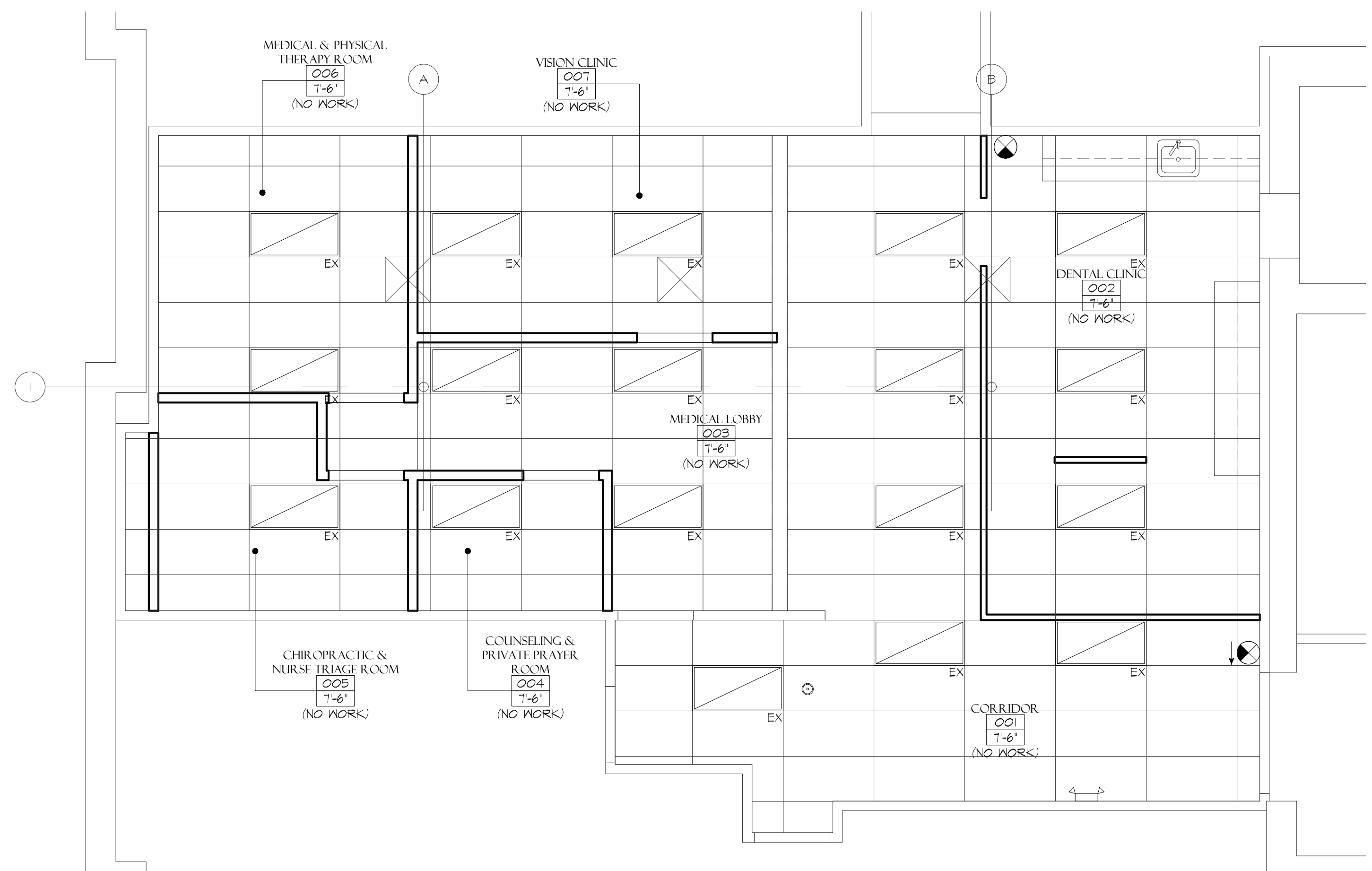
ISSUED:
00-00-00
ISSUED FOR PERMIT

© COPYRIGHT 2020
BATIR ARCHITECTURE, LTD.

SCALE
1/4" = 1'-0"
UNLESS NOTED OTHERWISE



 **FLOOR PLAN**
SCALE: 1/4"=1'-0"
NORTH



 **REFLECTED CEILING PLAN**
SCALE: 1/4"=1'-0"
NORTH