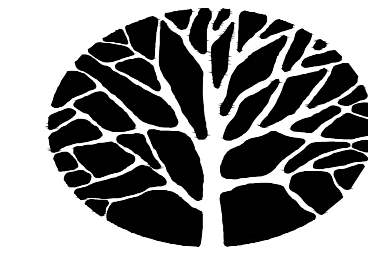


# LANDSCAPE PLAN

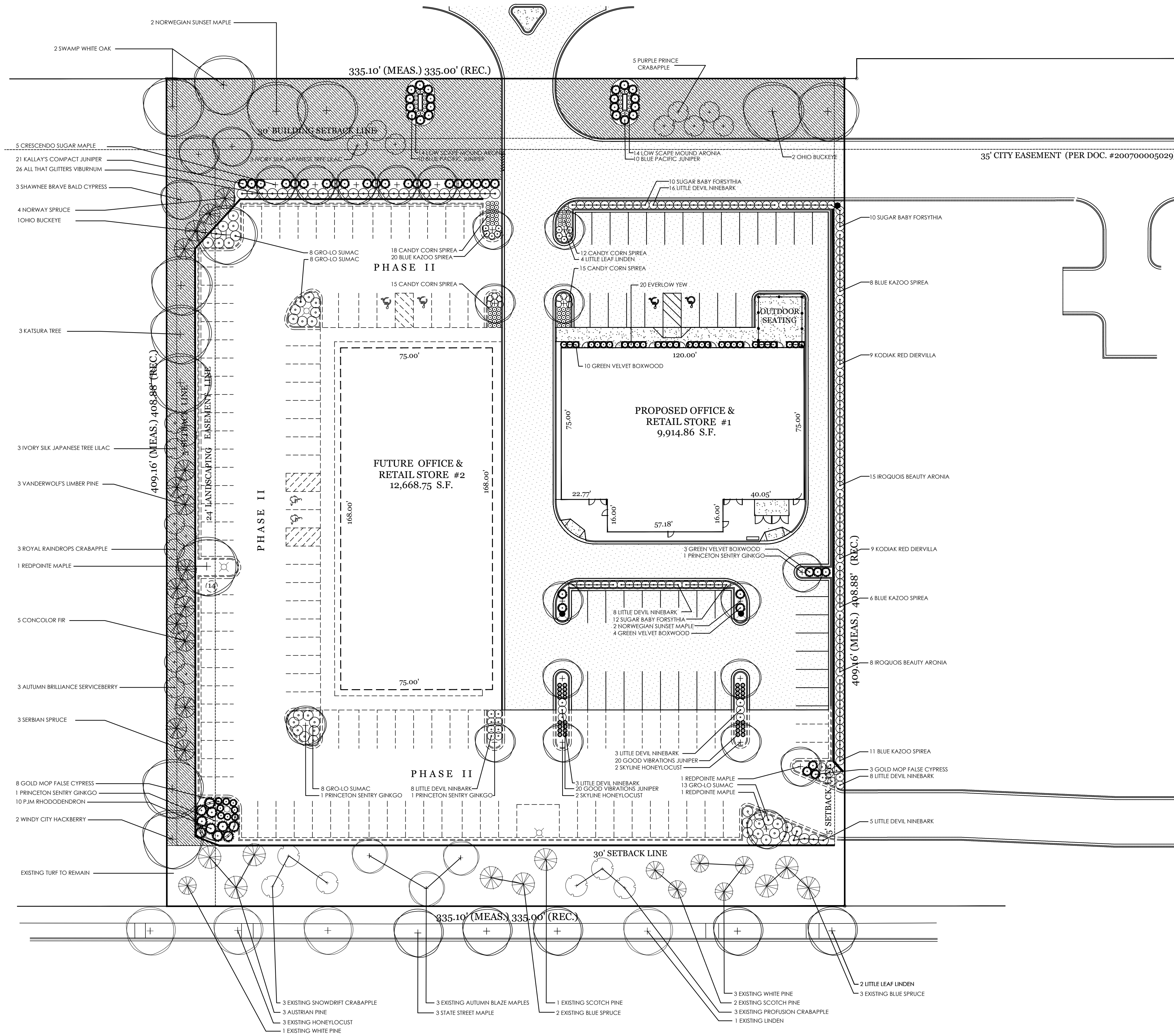
## CITIZEN'S FIRST NATIONAL BANK BUSINESS PARK LOT 3



**Western  
DuPage  
Landscaping, Inc.**

31 W. 478 DIEHL RD. NAPERVILLE, IL 60563.4620  
630.416.0072 FAX 630.416.0746

OGDEN AVENUE (U.S. ROUTE 34)



- 2 SWAMP WHITE OAK
- 2 NORWEGIAN SUNSET MAPLE
- 5 CRESCENDO SUGAR MAPLE
- 21 KALLAY'S COMPACT JUNIPER
- 26 ALL THAT GUITTERS VIBURNUM
- 3 SHAWNEE BRAVE BALD CYPRESS
- 4 NORWAY SPRUCE
- 1 OHIO BUCKEYE
- 3 KATSURA TREE
- 3 IVORY SILK JAPANESE TREE LILAC
- 3 VANDERWOLF'S LAMBER PINE
- 3 ROYAL RANDIROS CRABAPPLE
- 1 REDPOINTE MAPLE
- 5 CONCOLOR FIR
- 3 AUTUMN BRILLIANCE SERVICEBERRY
- 3 SERBIAN SPRUCE
- 8 GOLD MOP FALSE CYPRESS
- 1 PRINCETON SENTRY GINKGO
- 10 P.J.M. RHODODENDRON
- 2 WINDY CITY HACKBERRY
- EXISTING TURF TO REMAIN
- 3 EXISTING SNOWDRIFT CRABAPPLE
- 3 EXISTING AUTUMN BLAZE MAPLES
- 3 EXISTING HONEYLOCUST
- 1 EXISTING WHITE PINE
- 3 EXISTING SNOWDRIFT CRABAPPLE
- 3 EXISTING AUTUMN BLAZE MAPLES
- 3 EXISTING HONEYLOCUST
- 1 EXISTING WHITE PINE
- 1 EXISTING SCOTCH PINE
- 3 EXISTING SCOTCH PINE
- 3 EXISTING PROFUSION CRABAPPLE
- 1 EXISTING LINDEN
- 3 EXISTING WHITE PINE
- 3 EXISTING SCOTCH PINE
- 3 EXISTING BLUE SPRUCE
- 2 EXISTING BLUE SPRUCE

SUMMERLIN DRIVE  
(PUBLIC R.O.W. WIDTH VARIES)

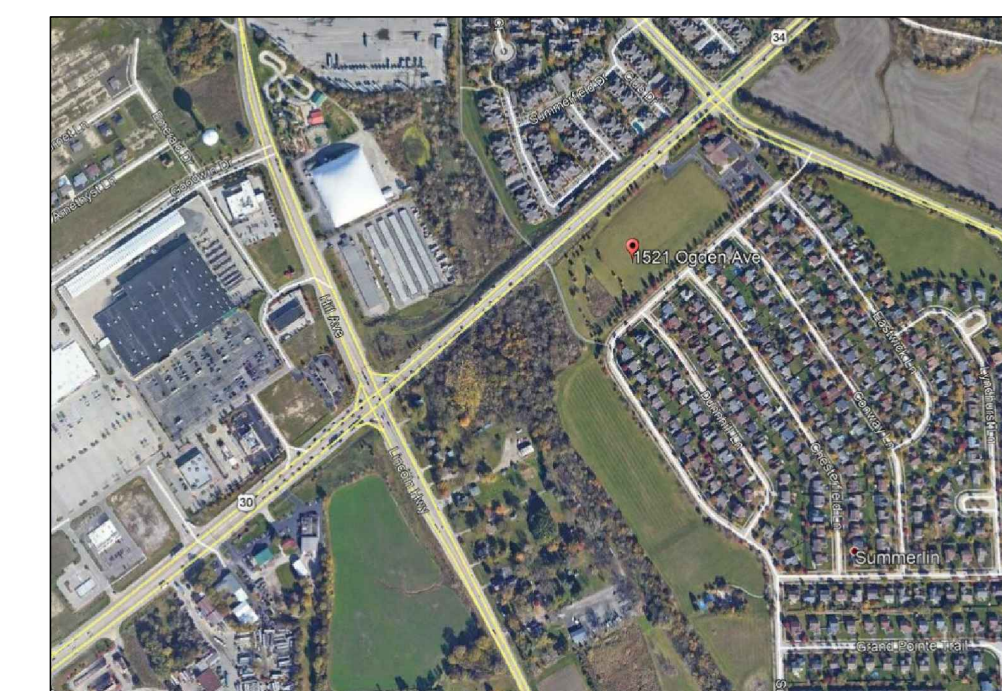
Landscape Implementation Data Table: Plant List by Category							
	QTY	Percent	SYM	BOTANICAL NAME (Family / Genus / Species)	COMMON NAME	SIZE	COMMENTS
Canopy Trees	3	10%		Sapindaceae Acer rubrum 'Redbrake'	Redpointe Maple	2.5'	
	5	16%		Sapindaceae Acer spicatum 'Morton'	Crescendo Sugar Maple	2.5'	
	2	4%		Cornaceae Celtis occidentalis 'Windy City'	Windy City Hackberry	2.5'	
	7	19%		Faboaceae Gleditsia triacanthos var. 'Inermis'	Skyline Honeylocust	2.5'	3 Existing
	6	13%		Fragaria 'Till cordata'	Littoral Linden	2.5'	1 Existing
	4	8%		Ginkgoaceae Ginkgo biloba 'Princeton Sentry'	Princeton Sentry Ginkgo	2.5'	
	4	8%		Sapotaceae Acer glaberrimum 'Kalmianum'	Norwegian Sunset Maple	2.5'	
	3	6%		Cercidiphyllaceae Cercidiphyllum japonicum	Katsura Tree	2.5'	
	3	6%		Sapindaceae Acer myriophyllum 'Morton'	Slag Street Maple	2.5'	
	3	6%		Sapotaceae Acer glaberrimum 'Kalmianum'	Ohio Buckeye	2.5'	
Evergreen Trees	4	13%		Pinaceae Picea abies	Norway Spruce	6'	
	3	10%		Pinaceae Pinus resinosa 'Vanderwolf's Pyramidal'	Vanderwolf's Lumber Pine	6'	
	5	16%		Pinaceae Abies concolor	Concolor Fir	6'	
	3	10%		Pinaceae Picea canadica	Scotch Spruce	6'	
	3	10%		Pinaceae Pinus strobus	Eastern White Pine	6'	
	3	10%		Pinaceae Pinus strobus	Scotch Pine	6'	
	3	10%		Pinaceae Pinus strobus	Austrian Pine	6'	
	3	10%		Pinaceae Pinus strobus	Colorado Blue Spruce	6'	
	4	13%		Pinaceae Picea abies	Norway Spruce	6'	
	3	10%		Pinaceae Pinus strobus	Scotch Pine	6'	
Understory Trees	3	13%		Rosaceae Amelanchier 'Autumn Brilliance'	Autumn Brilliance Serviceberry	8'	
	3	13%		Rosaceae Malus 'J.P. Raven'	Royal Flamingo Crabapple	2.5'	
	8	28%		Oleaceae Syringa reticulata 'Invy S&S'	Invy S&S Japanese Tree Lilac	2.5'	
	5	22%		Rosaceae Malus 'Purple Prince'	Purple Prince Crabapple	2.5'	
	3	13%		Rosaceae Malus 'Cocooner'	Cocooner Crabapple	2.5'	
	3	13%		Rosaceae Malus x 'prostrata' 'Profusion'	Profusion Crabapple	2.5'	
	3	13%		Rosaceae Malus x 'prostrata' 'Profusion'	Profusion Crabapple	2.5'	
	3	13%		Rosaceae Malus x 'prostrata' 'Profusion'	Profusion Crabapple	2.5'	
	3	13%		Rosaceae Malus x 'prostrata' 'Profusion'	Profusion Crabapple	2.5'	
	3	13%		Rosaceae Malus x 'prostrata' 'Profusion'	Profusion Crabapple	2.5'	
Deciduous Shrubs	51	19%		Rosaceae Physocarpus opulifolius 'Donna Miy'	Little Devil Ninebark	5 gal.	
	52	11%		Oleaceae Forsythia 'Yellow Gold'	Super Lady Forsythia	5 gal.	
	30	10%		Rosaceae Sorbus japonica 'NCSJX1'	Gandy Corn Spirea	5 gal.	
	45	16%		Rosaceae Spiraea media 'Candy Corn'	Blue Kazoo Spirea	5 gal.	
	18	6%		Ostrya 'Red Dervilla'	Kodiak Red Dervilla	5 gal.	
	23	8%		Rosaceae Aronia melanocarpa 'Morton'	Inquisit Beauty Aronia	5 gal.	
	28	10%		Rosaceae Aronia melanocarpa 'DOKNAMI18'	Low Spine Moral Aronia	5 gal.	
	37	13%		Anacardiaceae Rhus aromatica 'Glo-Sun'	Glo-Sun Sumac	5 gal.	
	26	9%		Adiantaceae Viburnum dentatum var. 'deanum' 'SMVDEL5'	All That Gitters Viburnum	36" tabs	
	29	10%		Taxaceae Taxus x 'media' 'Everlow'	Everlow Yew	5 gal.	
Evergreen Shrubs	20	15%		Cupressaceae Juniperus conferta 'Blue Pacific'	Blue Pacific Juniper	5 gal.	
	17	13%		Cupressaceae Blue x 'Green Velvet'	Green Velvet Boulewood	5 gal.	
	11	8%		Cupressaceae Chamaecyparis pisifera 'Golden Moir'	Good Key False Cypress	5 gal.	
	32	24%		Cupressaceae Juniperus horizontalis 'Good Vibrations Gold'	Good Vibrations Gold Juniper	5 gal.	
	21	16%		Cupressaceae Juniperus chinensis 'Kalm's Compact'	Kalm's Compact Pillar Juniper	5 gal.	
	10	8%		Ericaceae Phoradendron 'P.M.'	P.M. Phoradendron	5 gal.	
	20	15%		Taxaceae Taxus x 'media' 'Everlow'	Everlow Yew	5 gal.	
	17	13%		Cupressaceae Blue x 'Green Velvet'	Green Velvet Boulewood	5 gal.	
	11	8%		Cupressaceae Chamaecyparis pisifera 'Golden Moir'	Good Key False Cypress	5 gal.	
	32	24%		Cupressaceae Juniperus horizontalis 'Good Vibrations Gold'	Good Vibrations Gold Juniper	5 gal.	
21	16%		Cupressaceae Juniperus chinensis 'Kalm's Compact'	Kalm's Compact Pillar Juniper	5 gal.		
10	8%		Ericaceae Phoradendron 'P.M.'	P.M. Phoradendron	5 gal.		
<b>Total:</b>	<b>131</b>	<b>100%</b>					

Landscape Data Table: Planting Material Key	
Canopy Trees (minimum size 2.5 caliper) Count:	48
Evergreen Trees (minimum size 6 feet) Count:	31
Understory Trees (minimum size 2.5 caliper or 8 feet if multi-stemmed) Count:	23
Evergreen Shrubs (minimum of 18 inches) Count:	131
Deciduous Shrubs (minimum of 18 inches) Count:	290
Ornamental Grasses Count:	0
Perennials Count:	0
Annuals Count:	0
Groundcover Square Footage:	0
Turf (Seeded) Square Footage:	16662
Turf (Sod) Square Footage:	0
Native Prairie Planting Square Footage:	0
Native Wetland Planting Square Footage:	0

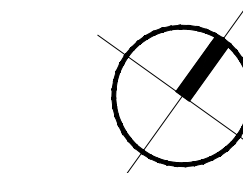
Landscape Data Table: CTEs Provided			
CTE Value	Count Provided	Total CTEs Provided	
Canopy Trees	1	48	48
Evergreen Trees	1/3	31	10
Understory Trees	1/3	23	8
Deciduous Shrubs	1/20	290	15
Evergreen Shrubs	1/20	131	7
<b>Total:</b>		<b>923</b>	<b>87</b>

**NOTES:**

- \*All turf existing except for noted. Repair damage from construction activities.
- \*Mutch all trees and shrub plantings with a minimum of 3" shredded dark hardwood bark.
- \*Adjust plant locations in field to maintain appropriate spacing from fire hydrants, light poles, all utility structures, driveways and sidewalks.
- \*Landscape Contractor shall verify locations of all underground utilities prior to digging and field adjust plant locations to avoid the same. Contact J.U.L.I.E. (1-800-892-0123) 48 hours prior to digging.
- \*Plant material sizing and ball sizes shall conform to the 'American Standards for Nursery Stock' (latest edition) by the American Association of Nurseryman, Inc.
- \*Quantity lists are supplied as a convenience. Contractor shall verify all quantities, and in case of discrepancy, the plan shall prevail.
- \*No plants are to be changed or substituted without approval of the Landscape Architect.
- \*\*Future Buildings #2 & #3 foundation plantings will be included in a separate Landscape Plan submitted when the next phases come in for development with a Final Plan Revision.



**SITE LOCATION PLAN**



0 15 30 45 75 105

4	11/25/19
3	11/19/19
2	08/28/19
1	08/22/19

revisions:

sheet:

**L-1**