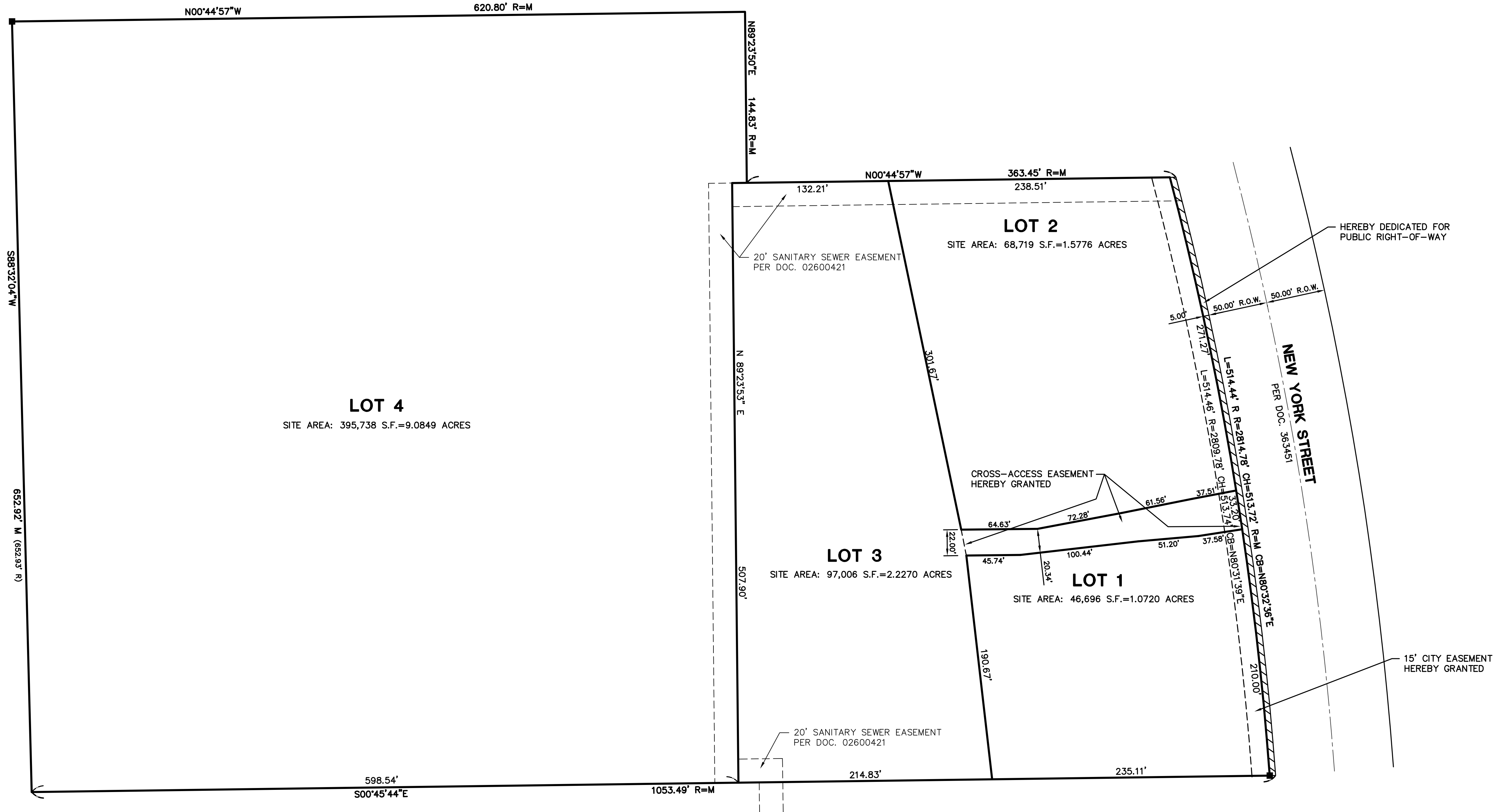
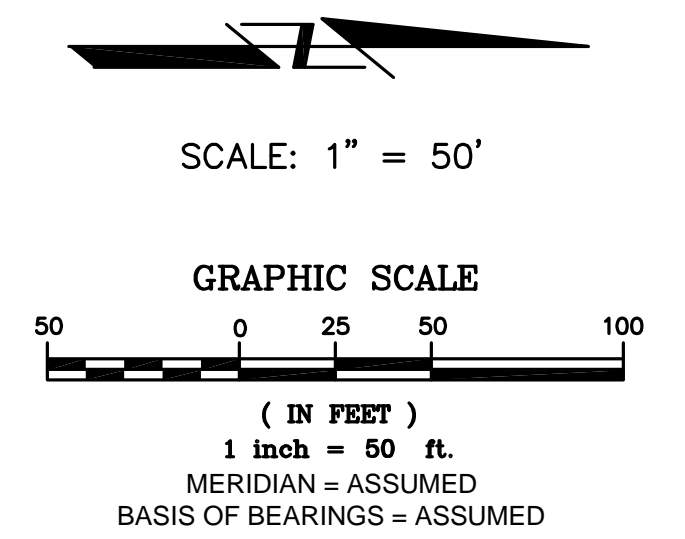


PRELIMINARY PLAT FOR FOX VALLEY SQUARE SUBDIVISION

BEING PART OF THE NORTH HALF OF THE SOUTHEAST QUARTER OF SECTION 24, TOWNSHIP 39 NORTH,
RANGE 8 EAST OF THE THIRD PRINCIPAL MERIDIAN, IN KANE COUNTY, ILLINOIS.

CITY RESOLUTION: _____ PASSED ON: _____



LEGEND

- CONCRETE MONUMENT
- CENTER LINE
- UNDERLYING LOT LINE
- EASEMENT LINE
- SUBDIVISION BOUNDARY LINE/PROPERTY LINE

ABBREVIATIONS

- N - NORTH
- S - SOUTH
- E - EAST
- W - WEST
- M - MEASURED
- R - RECORD
- S.F. - SQUARE FEET

SURVEYOR NOTES

1. 3/4 INCH DIAMETER X 24 INCH IRON PIPES SET AT ALL LOT CORNERS UNLESS OTHERWISE NOTED.
2. ALL MEASUREMENTS AND DISTANCES ARE SHOWN IN U.S. FEET AND DECIMAL PARTS THEREOF.
3. ALL EASEMENTS ARE HEREBY GRANTED UNLESS OTHERWISE NOTED.

Development Data Table: Preliminary Plat		
Description	Value	Unit
a) Tax/Parcel Identification Number(s) (PINs): 15-24-451-033		
b) Subdivided Area	14.02	Acres
	610731	Square Feet
c) Proposed New Right-of-way	0.059044995	Acres
	2,572	Square Feet
	515	Linear Feet of Centerline
d) Proposed New Easements	0.304476584	Acres
	13,263	Square Feet

INTECH CONSULTANTS, INC.
ENGINEERS - SURVEYORS
1889 UNIVERSITY LANE, SUITE D
LISLE, ILLINOIS 60532
PHONE: 630-964-9656

OWNER & PETITIONER:
FOX VALLEY PROPERTY
SERVICES, LLC
1667 E. NEW YORK STREET
AURORA, ILLINOIS

FOX VALLEY SQUARE
SUBDIVISION

PRELIMINARY
PLAT

SCALE: 1"=50'
DATE: 11-14-16
DRAWN: SJP
DESIGNED: CP
PROJECT NO:
2014-019A
SHEET
1 OF **1**