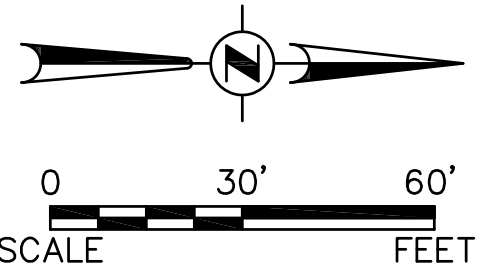


**LOCATION MAP**  
N.T.S.

# FIRE ACCESS PLAN

## FOR AURORA AREA INTERFAITH FOOD PANTRY

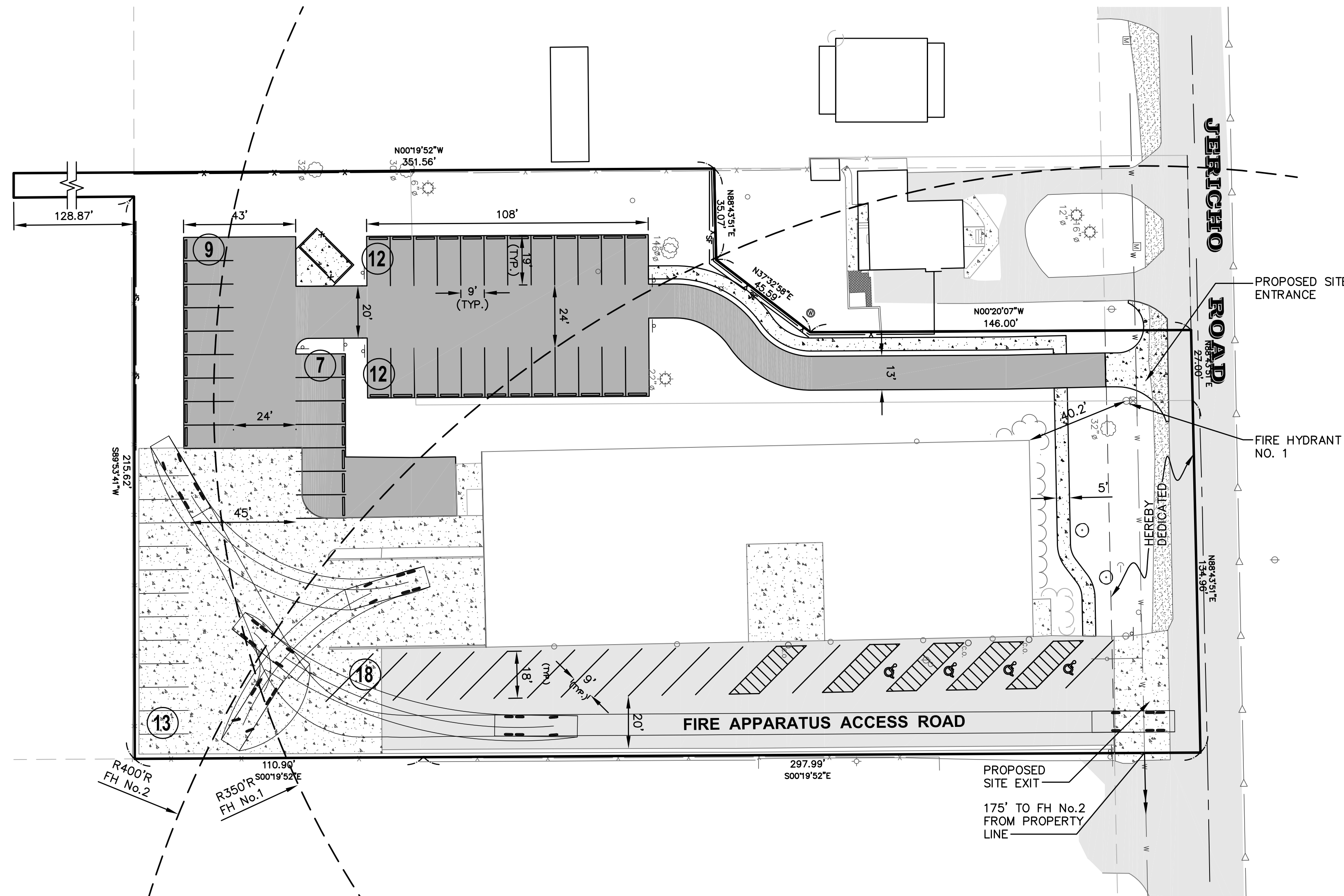
1110 JERICHO ROAD  
CITY OF AURORA  
KANE COUNTY, ILLINOIS



### LEGEND

EXISTING	DESCRIPTION	PROPOSED
	SANITARY SEWER	
	STORM SEWER	
	END SECTION	
	WATER MAIN & SIZE	
	WATER SERVICE & BOX	
	SEWER SERVICE	
	CONTOUR	
	GAS MAIN	
	TELEPHONE CABLE	
	FIBER OPTIC	
	SILT FENCE	
	MANHOLE	
	CATCH BASIN	
	INLET	
	HYDRANT	
	VALVE VAULT	
	TREE	
	ELEVATION	
	TRENCH BACKFILL	
	STREET LIGHT	
	SIGNS	
	FOUND IRON PIPE	
	GUY WIRE	
	UTILITY POLE	
	UTILITY PEDESTAL	
	HANDHOLE	
	STRAW BALES	
	ITEM DESIGNATED FOR REMOVAL	
	TREE PROTECTION REQUIRED	
	BITUMINOUS PAVEMENT	
	CONCRETE	
	GRAVEL	

Fire Access Plan Data Table		
Description	Value	Unit
a) Building Height	30.00	feet
b) Building Square Footage (typical)	17,476	square feet
c) Building fire suppression information including any proposed use of sprinkler systems, fire alarm systems, whether fire extinguishers are needed: Nothing proposed		
d) General description of business to be conducted within each building including: will there be rack storage in the building, will there be storage of combustible materials over twelve feet in height, clearance of sprinkler heads and stored materials (18 inch minimum): Food pantry		



Plotted: August 31, 2016 @ 9:49 AM By: Kris Pung - Tab: Fire Plan (22,334)

COPYRIGHT © 2016 ENGINEERING ENTERPRISES, INC.

**Engineering Enterprises, Inc.**  
CONSULTING ENGINEERS  
52 Wheeler Road  
Sugar Grove, Illinois 60554  
630.466.6700 / www.eeiweb.com

**AURORA AREA INTERFAITH FOOD PANTRY**  
1110 JERICHO ROAD  
AURORA, IL 60506

NO.	DATE	REVISIONS

**AURORA AREA INTERFAITH  
FOOD PANTRY SITE IMPROVEMENTS**

**FIRE ACCESS PLAN**

DATE: OCTOBER 2015  
PROJECT NO: G14004  
FILE: G14004 FIRE PLAN  
SHEET **1** OF **1**

Path: H:\305KPROJ\G14004\DWG\FINAL\_ENG\G14004 FIRE PLAN