

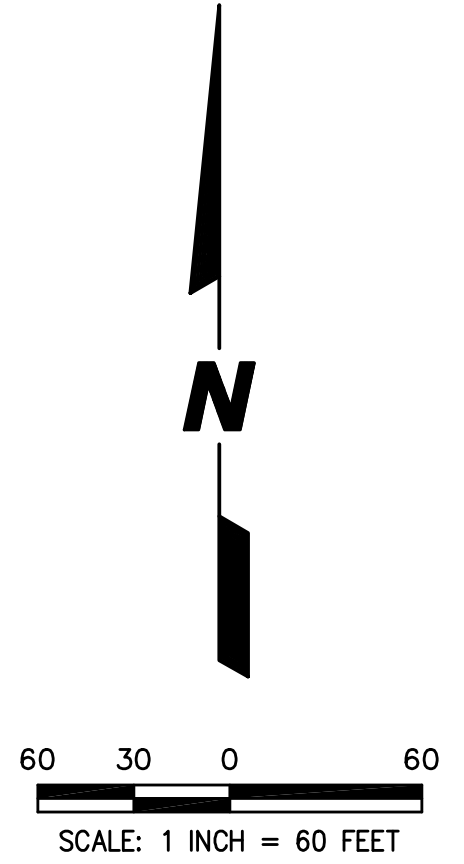
# PRELIMINARY PLAN

# FOR DISTRICT 204 SITE

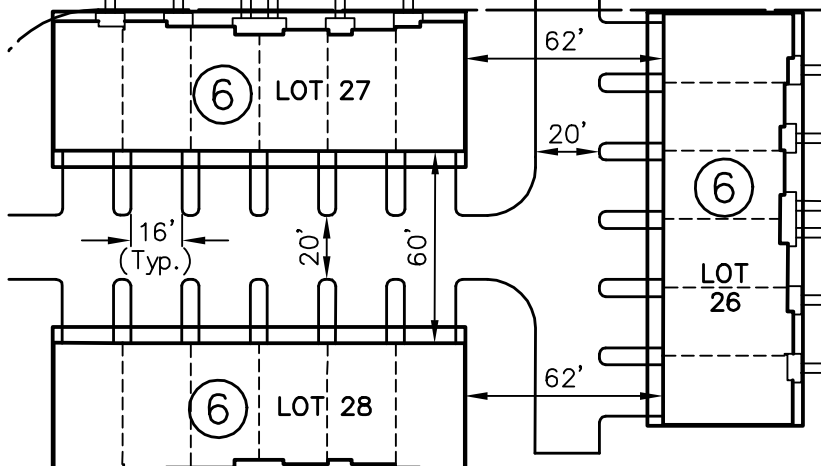
## PARCEL DESCRIPTION

THE SOUTH 1027.50 FEET OF THE WEST 1059.85 FEET OF THE SOUTHEAST QUARTER OF SECTION 28, TOWNSHIP 38 NORTH, RANGE 9 EAST OF THE THIRD PRINCIPAL MERIDIAN, IN DUPAGE COUNTY, ILLINOIS.

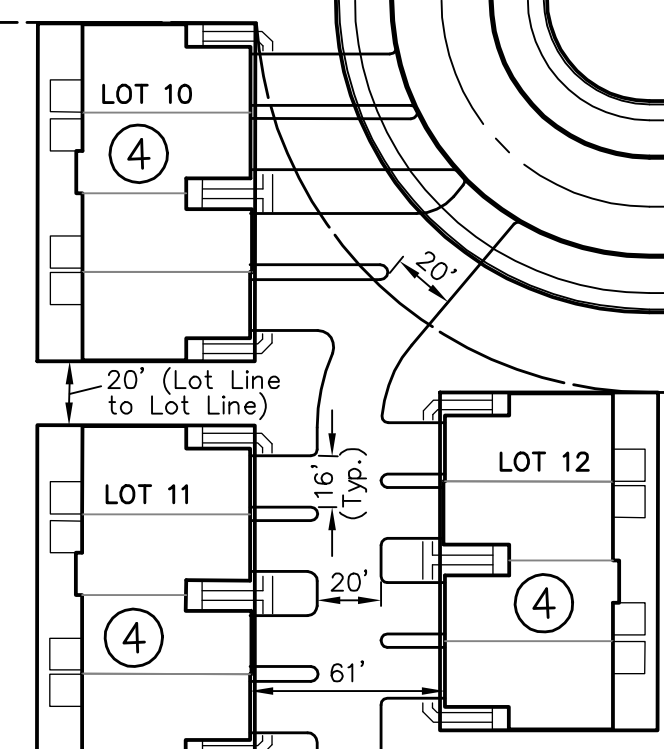
DEVELOPMENT DATA TABLE: PRELIMINARY PLAN	
Description	Value / Unit
A. TAX PARCEL IDENTIFICATION NUMBER(S) (PINA):	07-28-400-010
B. PROPOSED LAND USE(S):	SINGLE FAMILY ATTACHED
C. TOTAL PROPERTY SIZE:	25.0042899 Ac. / 1,089,197 S.F.
D. TOTAL LOT COVERAGE (Buildings and Pavement):	527,076 S.F. / 48%
E. OPEN SPACE/LANDSCAPING:	561,924 S.F. / 52%
F. LAND TO BE DEDICATED TO THE SCHOOL BOARD:	0 Acres
G. LAND TO BE DEDICATED TO THE PARK DISTRICT:	1.03 Acres
H. NUMBER OF PARKING SPACES PROVIDED (Individually Accessible):	348 Spaces
i. surface parking lot	0 Spaces
ii. perpendicular	0 Spaces
iii. angled	0 Spaces
iv. handicapped	0 Spaces
v. enclosed	348 Spaces
vi. bike	0 Spaces
I. NUMBER OF BUILDINGS:	34
i. Number of Stories	3 Stories
ii. Building Square Footage (Typical)	14,000 - 22,000 S.F.
iii. Square Footage of retail floor area	0 S.F.
iv. First Floor Building Square Footage (Typical)	0 S.F.
J. TOTAL NUMBER OF RESIDENTIAL DWELLING UNITS:	171 Units
i. gross density	6.84 DU / Ac.
ii. net density	8.52 Net Density
K. NUMBER OF SINGLE FAMILY DWELLING UNITS:	0 Units
i. gross density	0.00 DU / Ac.
ii. net density	0.00 Net Density
iii. Unit Square Footage (average)	0 S.F.
iv. Bedroom Mix	0% 1 Bedroom 0% 2 Bedroom 0% 3 Bedroom 0% 4 Bedroom 0 Units
v. Number of Single Family Corner Lots	0 Units
L. NUMBER OF SINGLE FAMILY ATTACHED DWELLING UNITS:	171 Units
i. gross density	6.84 DU / Ac.
ii. net density	8.52 Net Density
iii. Unit Square Footage (average)	0 S.F.
iv. Bedroom Mix	0% 1 Bedroom 90% 2 Bedroom 10% 3 Bedroom 0% 4 Bedroom 0 Units
M. NUMBER OF MULTIFAMILY DWELLING UNITS:	0 Units
i. gross density	0.00 DU / Ac.
ii. net density	0.00 Net Density
iii. Unit Square Footage (average)	0 S.F.
iv. Bedroom Mix	0% Efficiency 0% 1 Bedroom 0% 2 Bedroom 0% 3 Bedroom 0 Units



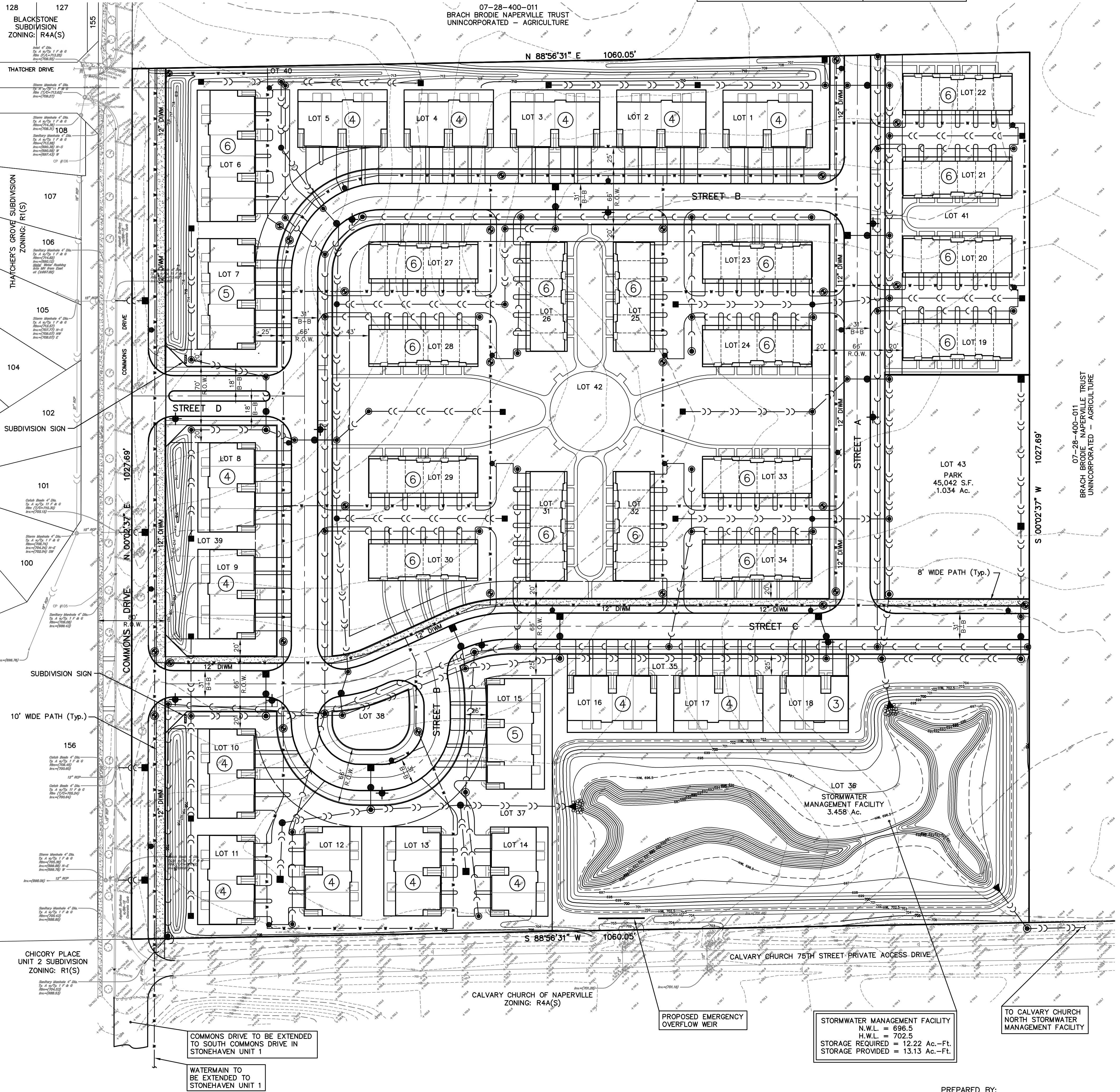
LOCATION MAP



BUILDING SEPARATION EXHIBIT - DETAIL A



BUILDING SEPARATION EXHIBIT - DETAIL B



## LEGEND

EXISTING	PROPOSED	DESCRIPTION	EXISTING	PROPOSED	DESCRIPTION
(Symbol)	(Symbol)	MANHOLE	(Symbol)	(Symbol)	CONTOURS
(Symbol)	(Symbol)	CATCH BASIN	(Symbol)	(Symbol)	ELEVATIONS
(Symbol)	(Symbol)	INLET	(Symbol)	(Symbol)	STREET LIGHT
(Symbol)	(Symbol)	CLEANOUT	(Symbol)	(Symbol)	WATERMAIN PROTECTION
(Symbol)	(Symbol)	SLOPE INLET BOX	(Symbol)	(Symbol)	SILT FENCE INLET PROTECTOR
(Symbol)	(Symbol)	HEADWALL	(Symbol)	(Symbol)	TEMPORARY STRAW BALE DITCH CHECK
(Symbol)	(Symbol)	END SECTION	(Symbol)	(Symbol)	SILT FENCE DITCH CHECK
(Symbol)	(Symbol)	STORM SEWER	(Symbol)	(Symbol)	SETBACK LINE
(Symbol)	(Symbol)	SANITARY SEWER	(Symbol)	(Symbol)	RIP-RAP
(Symbol)	(Symbol)	WATERMAIN	(Symbol)	(Symbol)	OVERFLOW ROUTE
(Symbol)	(Symbol)	VALVE & BOX	(Symbol)	(Symbol)	
(Symbol)	(Symbol)	WATER VALVE IN VAULT	(Symbol)	(Symbol)	
(Symbol)	(Symbol)	FIRE HYDRANT	(Symbol)	(Symbol)	

PREPARED BY:  
**CEMCON, Ltd.**  
 Consulting Engineers, Land Surveyors & Planners  
 2280 White Oak Circle, Suite 100  
 Aurora, Illinois 60502-9675  
 PH: 630.862.2100 FAX: 630.862.2199  
 E-Mail: cadd@cemcon.com Website: www.cemcon.com

DISC NO.: 743015 FILE NAME: PREENG  
 DRAWN BY: JGC FLD. BK. / PG. NO.: ---  
 COMPLETION DATE: 07-12-17 JOB NO.: 743.015  
 XREF: TOPO PROJECT MANAGER: MAM

PREPARED FOR:  
**M/I HOMES OF CHICAGO, LLC**  
 400 EAST DIEHL ROAD, SUITE 230  
 NAPERVILLE, ILLINOIS 60563

NO.	DATE	REVISIONS
1	08-15-17/JGC	PER CITY REVIEW COMMENTS DATED 8-8-17
2	11-06-17/JGC	REVISED PER NEW LAYOUT
3	01-04-18/JGC	REVISED PER NEW LAYOUT
4	01-09-18/JGC	PER CITY REVIEW COMMENTS